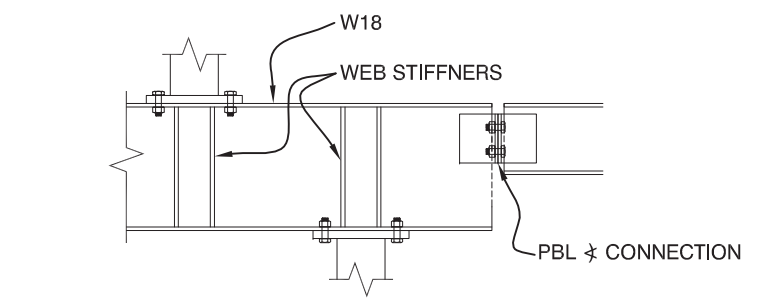
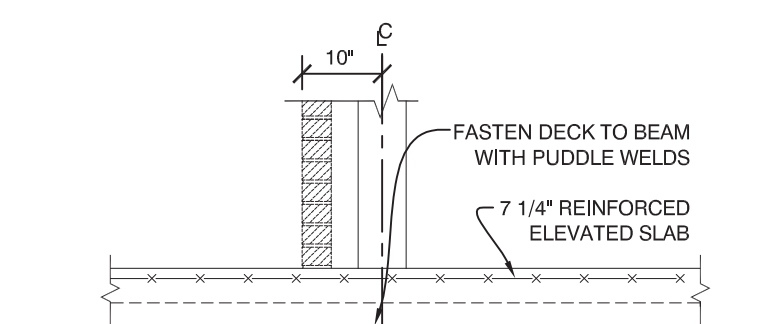


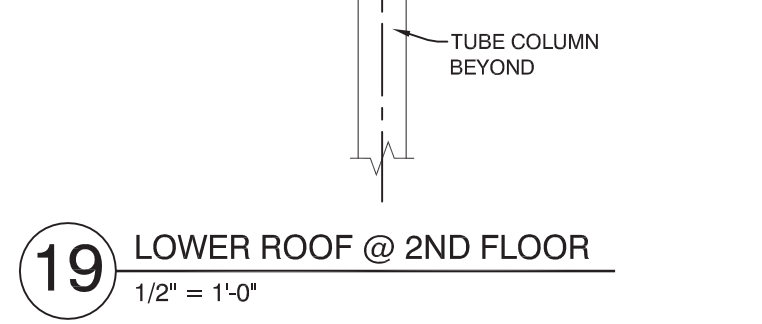
Copyright © 2015 Opechee Construction Corporation
 Friday, October 14, 2016 9:15:03 AM



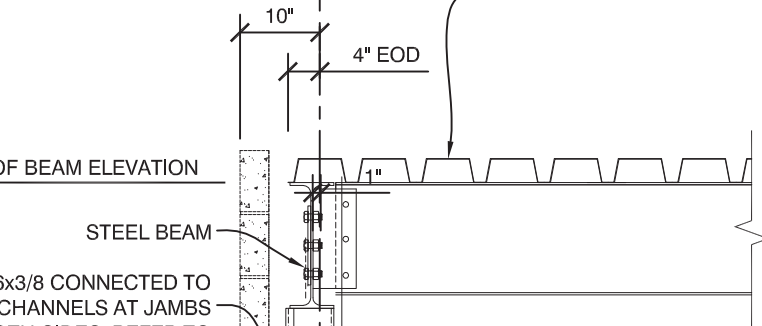
20 BEAM COLUMN CONNECTION @ 2ND FLOOR
 1/2" = 1'-0"



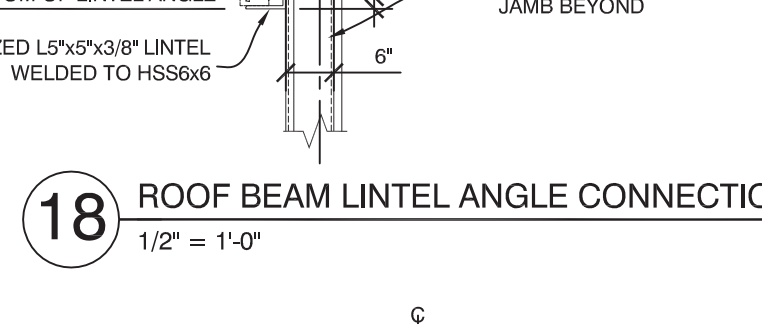
19 LOWER ROOF @ 2ND FLOOR
 1/2" = 1'-0"



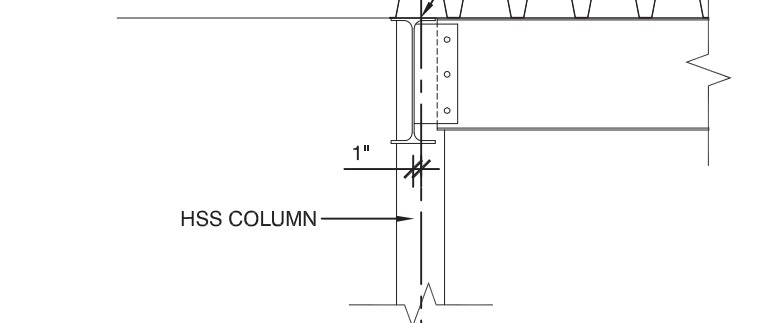
18 ROOF BEAM LINTEL ANGLE CONNECTION
 1/2" = 1'-0"



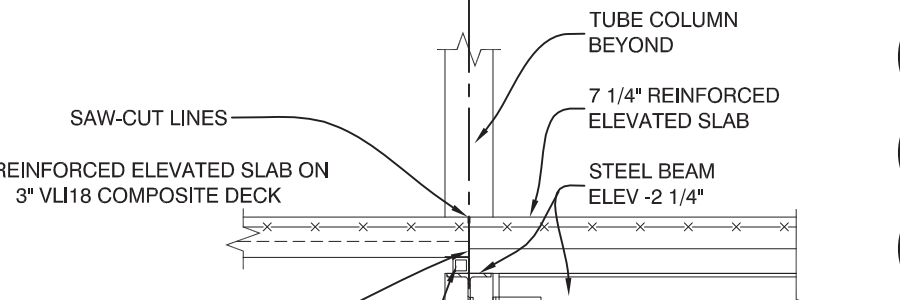
17 BEAM CONNECTION
 1/2" = 1'-0"



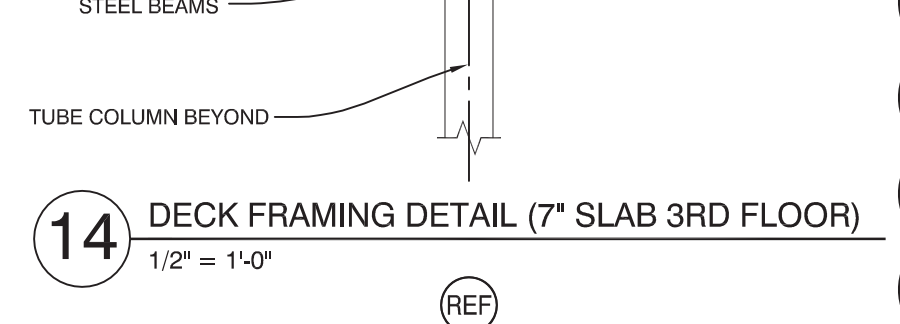
16 BEAM CONNECTION
 1/2" = 1'-0"



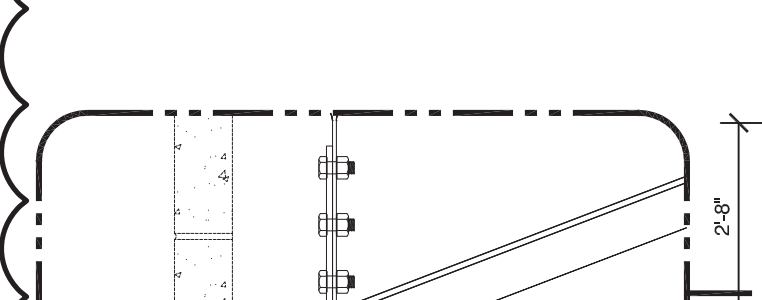
15 CORRIDOR ROOF DECK FRAMING DETAIL (TYPICAL)
 1/2" = 1'-0"



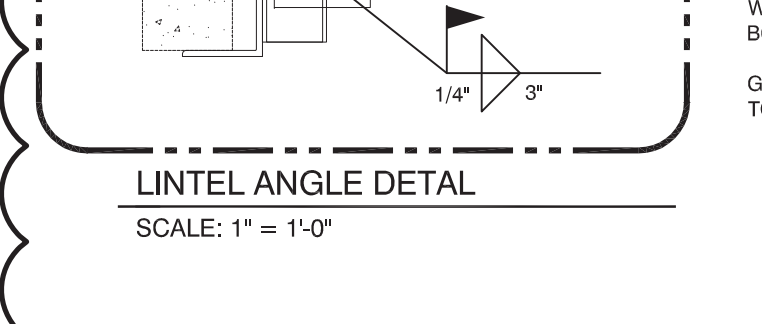
**14 DECK FRAMING DETAIL (7\"/>
 1/2" = 1'-0"**



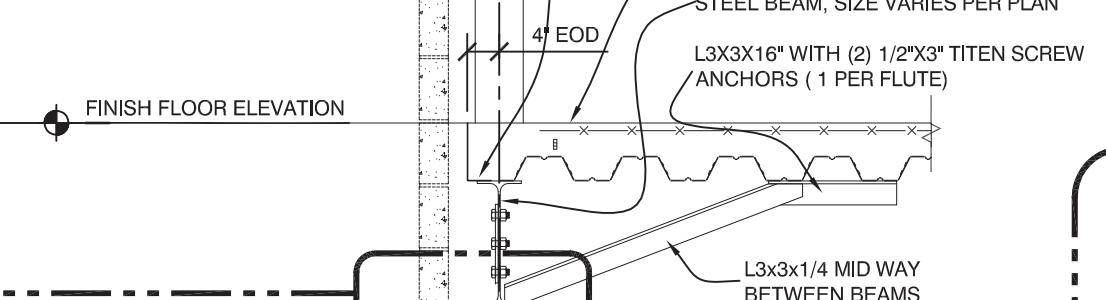
**13 DECK FRAMING DETAIL (7\"/>
 1/2" = 1'-0"**



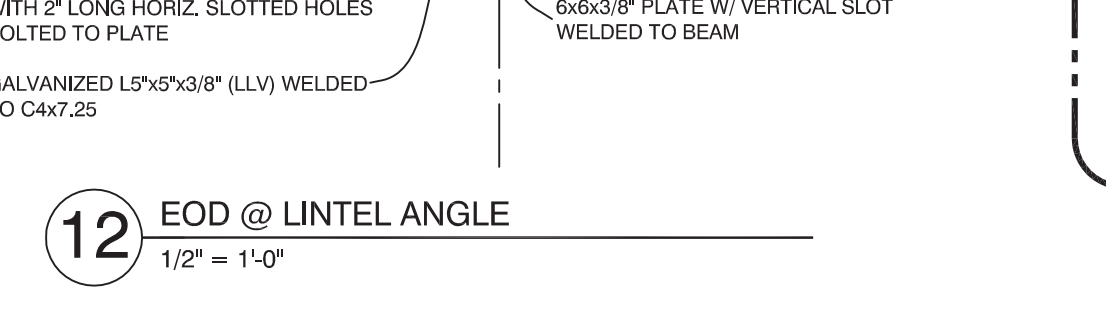
12 EOD @ LINTEL ANGLE
 1/2" = 1'-0"



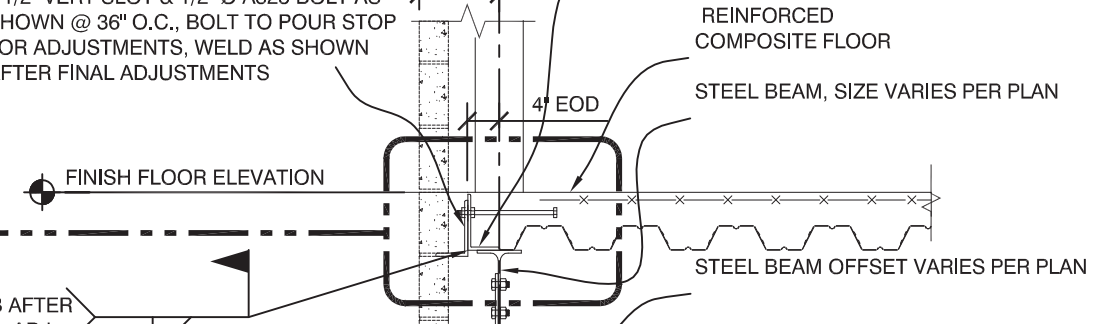
11 EOD @ RELIEVING ANGLE
 1/2" = 1'-0"



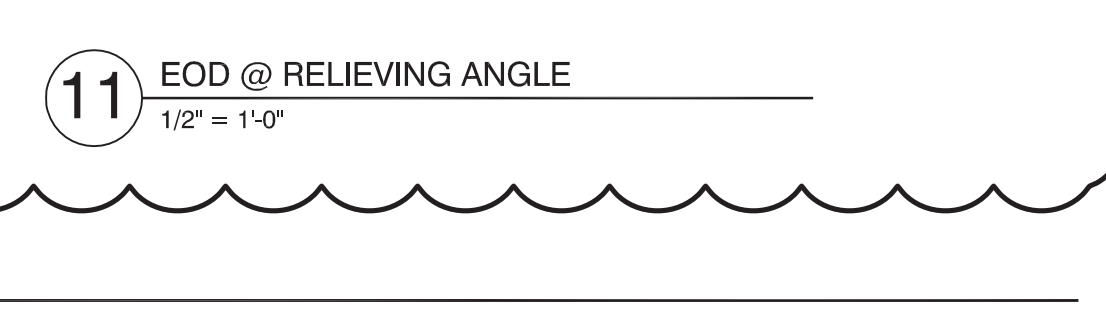
10 EOD @ LINTEL ANGLE
 1/2" = 1'-0"



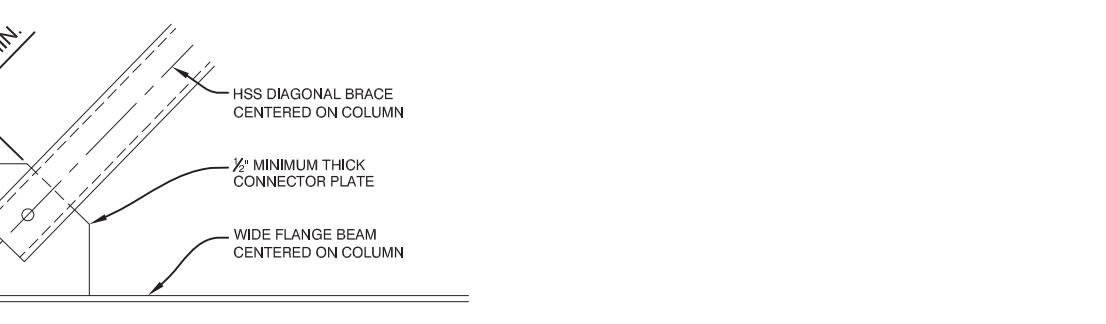
**9 CORRIDOR DECK FRAMING DETAIL (7\"/>
 1/2" = 1'-0"**



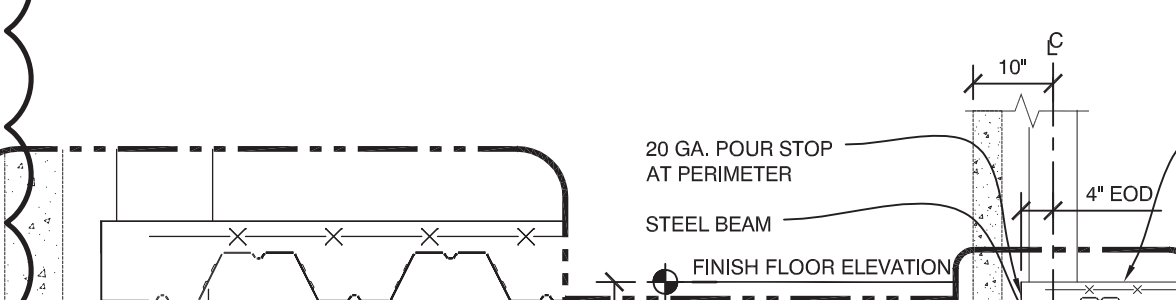
8 CORRIDOR DECK FRAMING DETAIL (TYPICAL)
 1/2" = 1'-0"



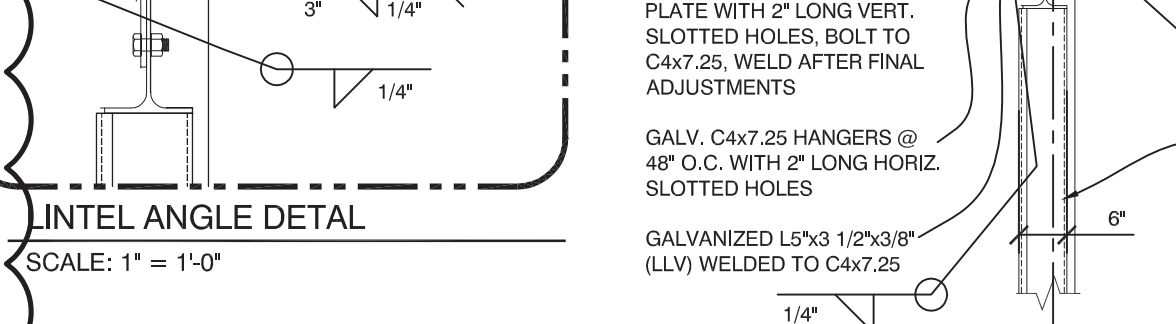
7 BEAM CONNECTION AT COLUMN (TYPICAL)
 1/2" = 1'-0"



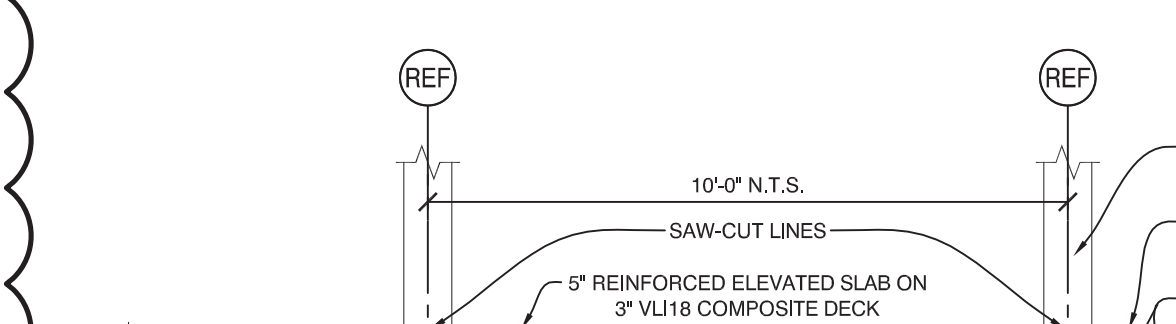
6 EOD @ RELIEVING ANGLE (TYPICAL)
 1/2" = 1'-0"



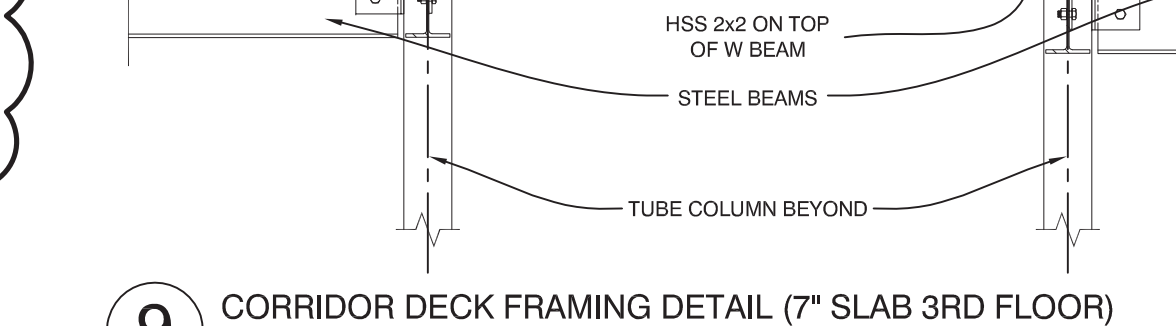
**5 PERIMETER DECK CONNECTION (5\"/>
 1/2" = 1'-0"**



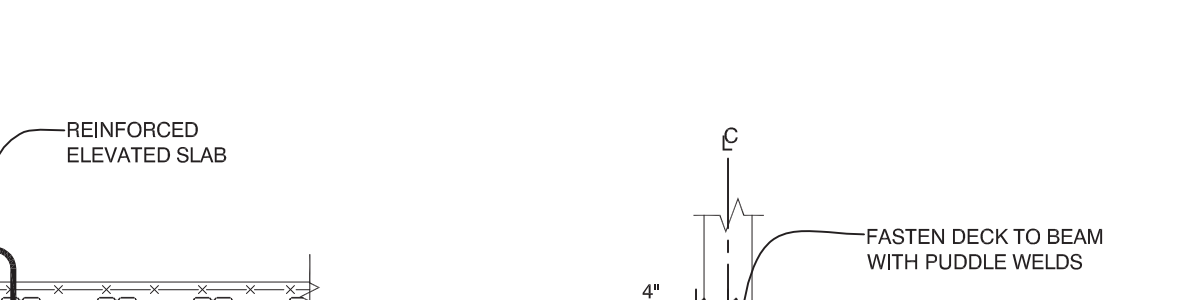
**4 PERIMETER DECK CONNECTION (7 1/4\"/>
 1/2" = 1'-0"**



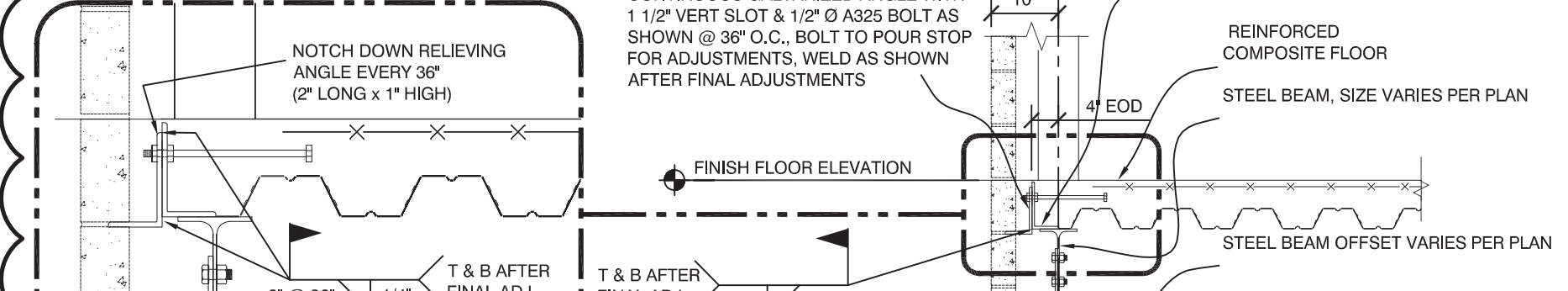
**3 EDGE OF DECK CONNECTION (5\"/>
 1/2" = 1'-0"**



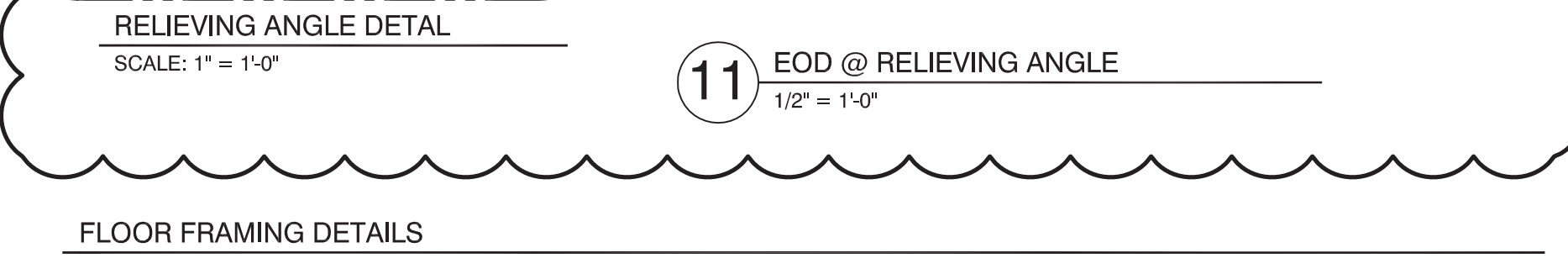
**2 EDGE OF DECK CONNECTION (7 1/4\"/>
 1/2" = 1'-0"**



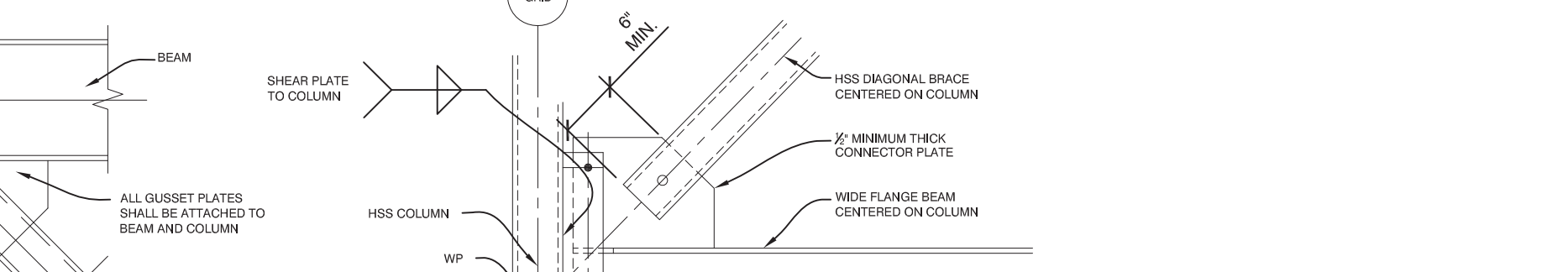
1 ELEVATOR PIT LADDER
 1/2" = 1'-0"



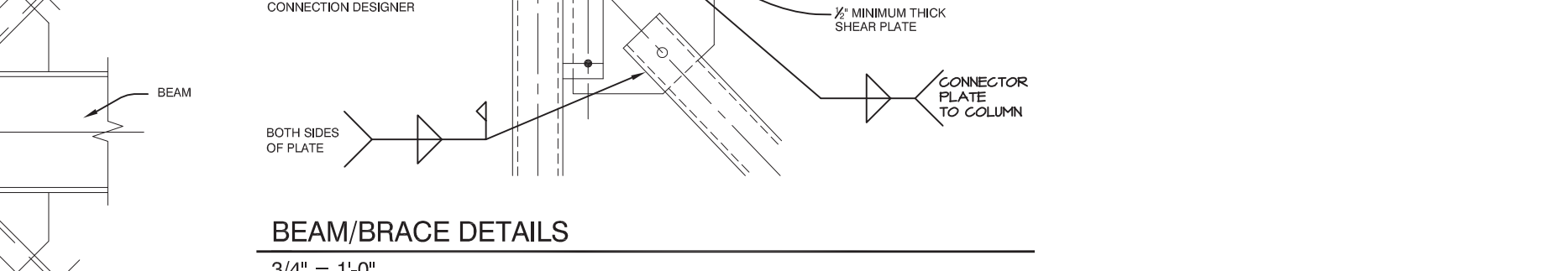
11 EOD @ RELIEVING ANGLE
 1/2" = 1'-0"



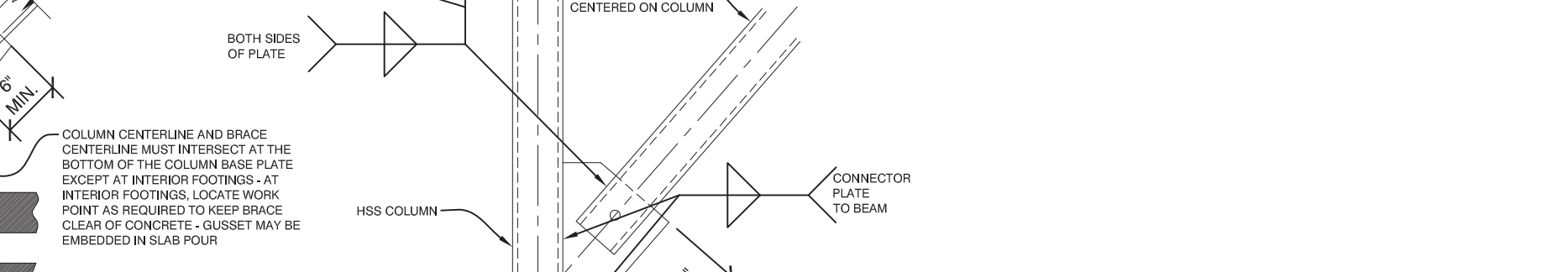
10 EOD @ LINTEL ANGLE
 1/2" = 1'-0"



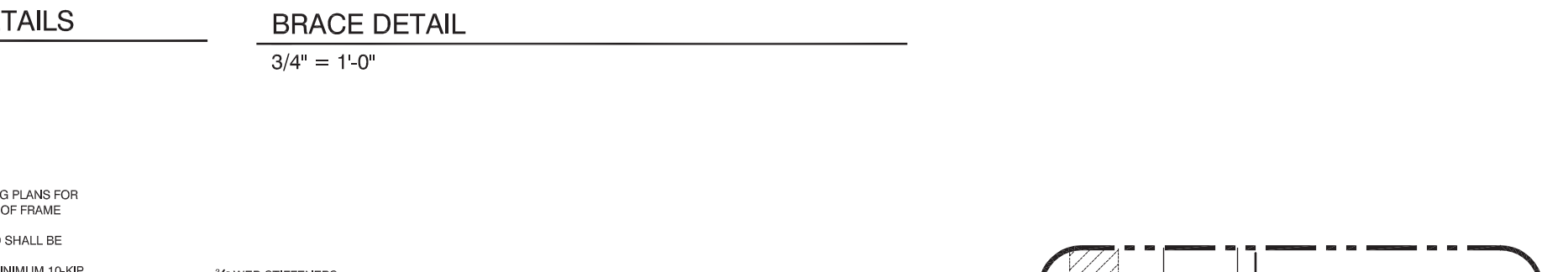
**9 CORRIDOR DECK FRAMING DETAIL (7\"/>
 1/2" = 1'-0"**



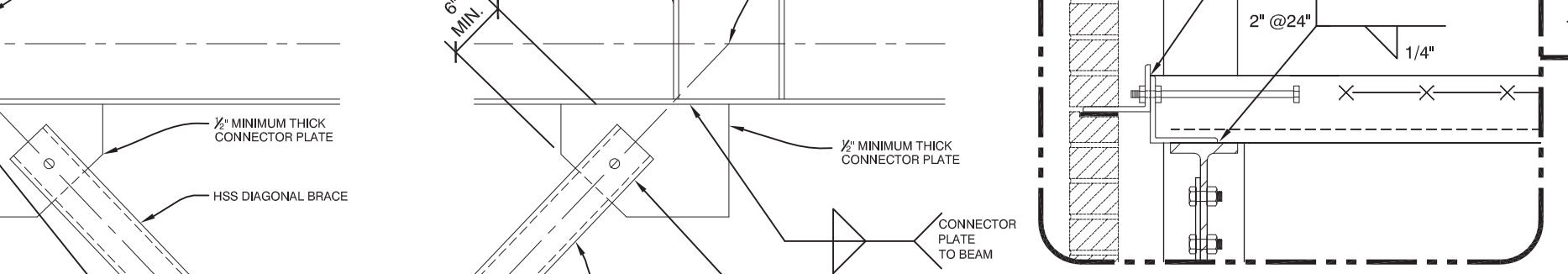
8 CORRIDOR DECK FRAMING DETAIL (TYPICAL)
 1/2" = 1'-0"



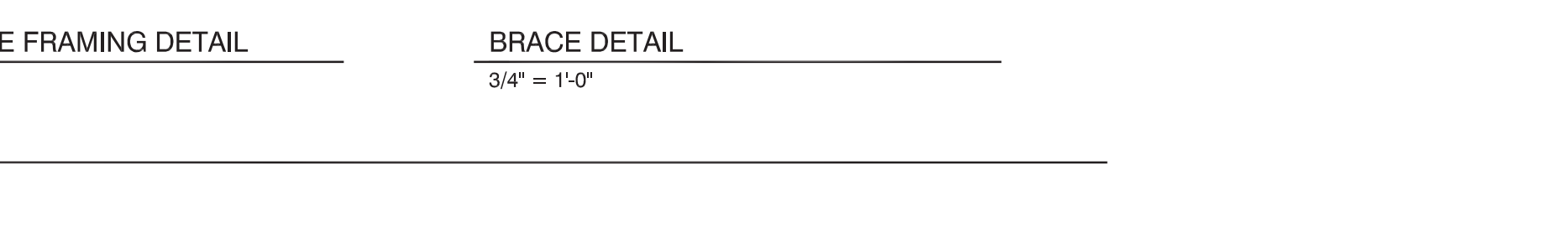
7 BEAM CONNECTION AT COLUMN (TYPICAL)
 1/2" = 1'-0"



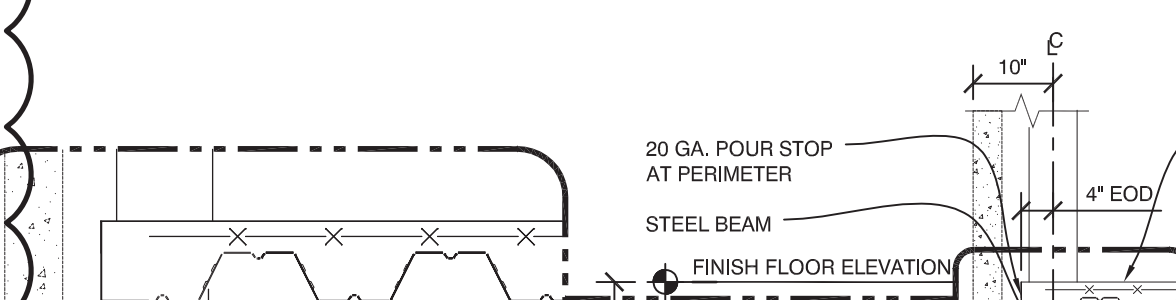
6 EOD @ RELIEVING ANGLE (TYPICAL)
 1/2" = 1'-0"



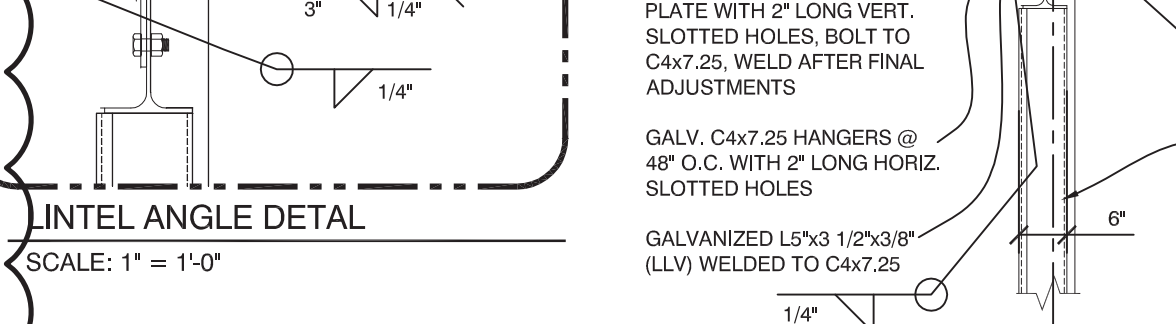
**5 PERIMETER DECK CONNECTION (5\"/>
 1/2" = 1'-0"**



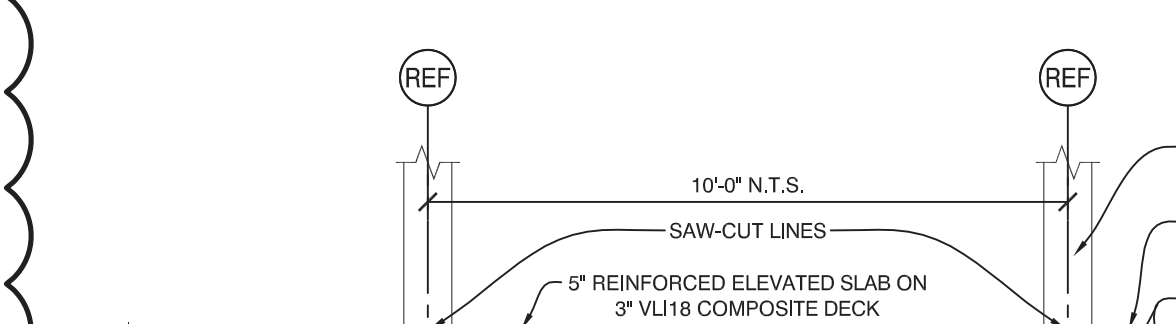
**4 PERIMETER DECK CONNECTION (7 1/4\"/>
 1/2" = 1'-0"**



**3 EDGE OF DECK CONNECTION (5\"/>
 1/2" = 1'-0"**



**2 EDGE OF DECK CONNECTION (7 1/4\"/>
 1/2" = 1'-0"**



1 ELEVATOR PIT LADDER
 1/2" = 1'-0"

FLOOR FRAMING DETAILS

BEAM/BRACE DETAILS

SCHEMATIC BRACE DETAILS

BRACE DETAIL

SCHEMATIC MID-BRACE FRAMING DETAIL

BRACE DETAIL

RELIEVING ANGLE DETAIL

SCALE: 1" = 1'-0"

EOD @ RELIEVING ANGLE (TYPICAL)

1/2" = 1'-0"

FLOOR FRAMING DETAILS

NOTES:
 1. ALL FORCES SHOWN ON THIS DRAWING ARE AXIAL. SEE FRAMING PLANS FOR BEAM REACTIONS WHICH MUST ALSO BE CONSIDERED IN DESIGN OF FRAME CONNECTIONS.
 2. FOR BRACED FRAME CONNECTION DESIGN THE FORCES NOTED SHALL BE CONSIDERED TO ACT IN TENSION AND COMPRESSAL.
 3. ALL BRACING CONNECTION SHALL BE DESIGNED TO RESIST A MINIMUM 10-KIP AXIAL FORCE.
 4. 1/2\"/>

NOTE: 3/8\"/>

NOTE: 3/8\"/>

NOTE: MITRE AND WELD RELIEVING ANGLE AT ALL OUTSIDE CORNERS