

Thursday, October 13, 2016 2:14:01 PM
 Copyright 2015 Opechee Construction Corporation

BEAM REACTION TABLE		
BEAM DEPTH	MINIMUM NUMBER OF BOLTS	ASD REACTION KIPS
W8	2	12.4
W10	2	13.8
W12	3	23.0
W14	3	26.4
W16	4	39.0
W18	5	53.0
W21	6	63.6
W24	7	74.2

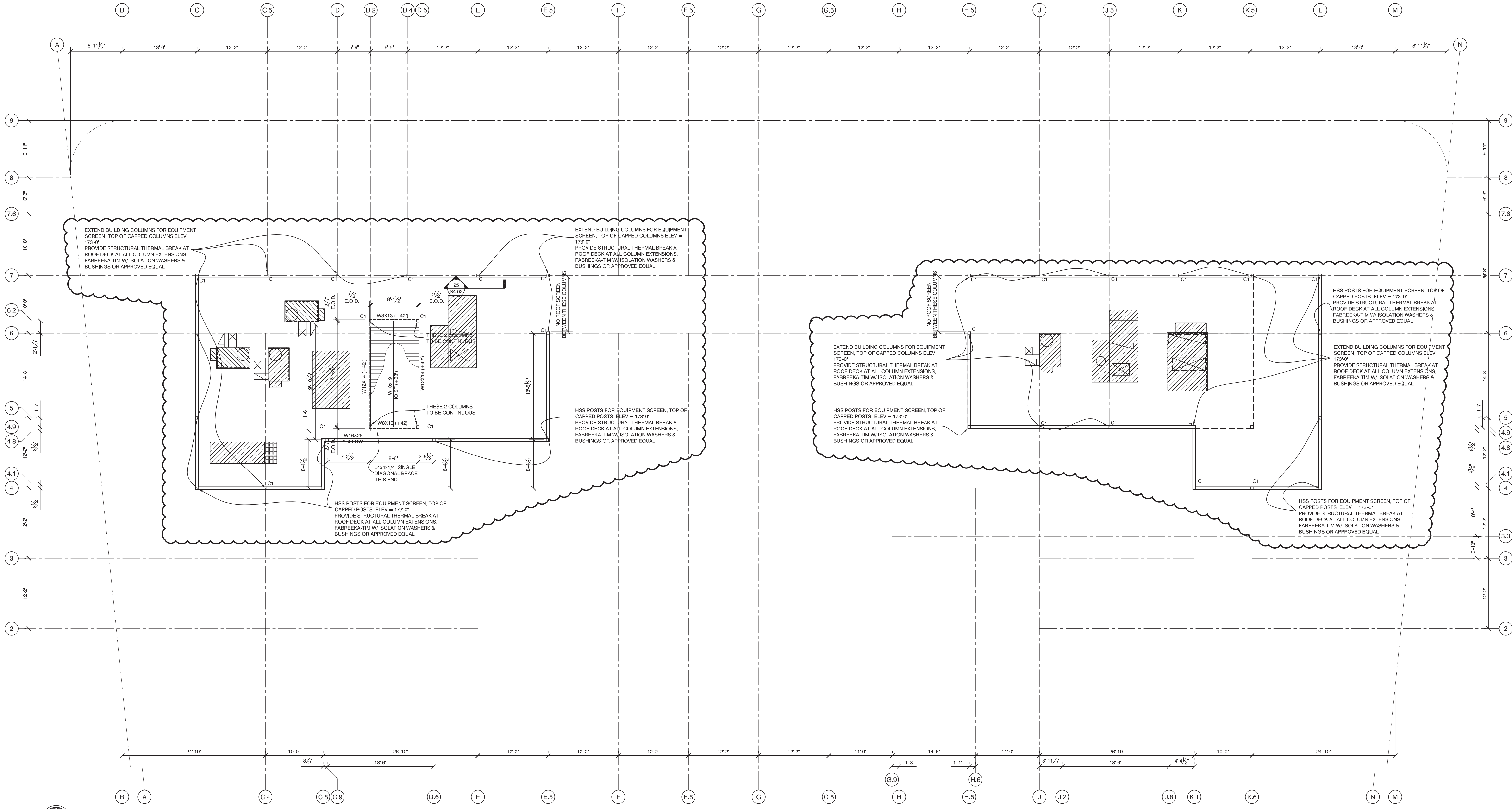
NOTE:
 UNLESS REACTIONS ARE NOTED ON PLANS, BEAM CONNECTIONS SHALL BE DESIGNED FOR THESE REACTIONS AND PROVIDED WITH THESE MINIMUM BOLT QUANTITIES.

- TABLE ASSUMPTIONS:
- LEAST WEB THICKNESS FOR BEAM DEPTH SERIES
 - 3/8" 36 KSI SINGLE SHEAR PLATE
 - 1/2" DIA. A325 BOLTS W/THREADS INCLUDED
 - STANDARD SIZE BOLT HOLES
 - BEAM COPED TOP AND BOTTOM
 - DISTANCE FROM END OF BEAM TO CENTER OF BOLT HOLES = 1 1/2" MINIMUM
 - DISTANCE FROM TOP OF COPED WEB TO CENTER OF FIRST BOLT HOLE = 1 1/2" MINIMUM

OPECHEE
 CONSTRUCTION CORPORATION

11 CORPORATE DRIVE • BELMONT • NH 03220
 PHONE (603) 527-0066 • WWW.OPECHEE.COM

STATE OF NEW HAMPSHIRE
 JEFFREY S. NAWROCKI
 No. 6044
 PROFESSIONAL ENGINEER



AC HOTELS by MARRIOTT
 Fore Street / Hancock Street / Thames Street
 Portland, Maine

REVISION:
 09-02-16 USN MARKUPS
 10-05-16 ELEVATOR & FRAMING REVISIONS

ISSUED:
 08-12-16 FOUNDATION & STEEL PERMIT
 10-14-16 FOR CONSTRUCTION

project architect: KAK
 drawn by: DLS

ROOF SCREEN FRAMING PLAN

sheet number:
S3.07

PLAN NORTH
1 ELEVATOR ROOF AND SCREEN FRAMING PLAN
 1/8" = 1'-0"