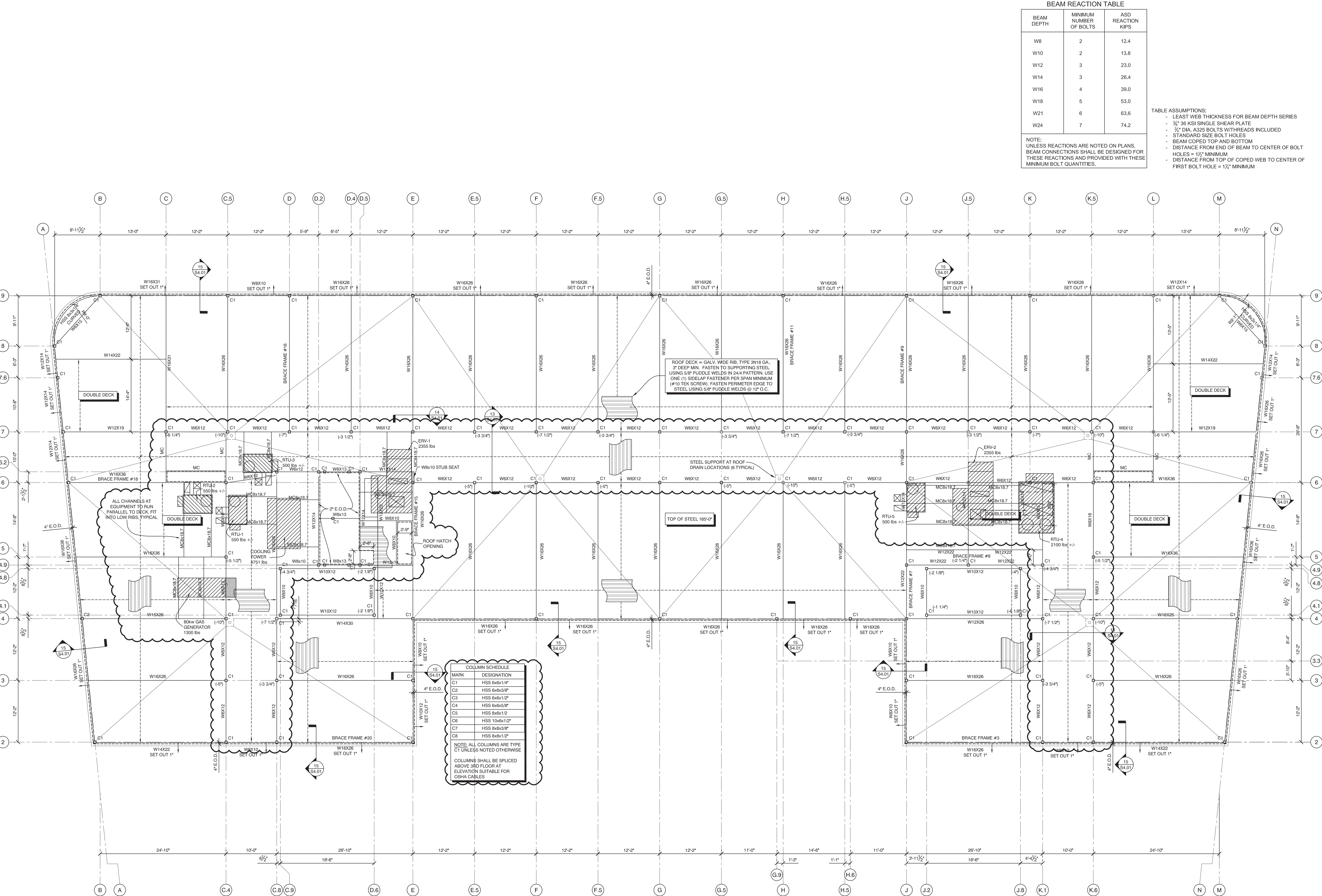


Thursday, October 13, 2016, 2:08:59 PM

Copyright 2015 Opechee Construction Corporation



BEAM REACTION TABLE

BEAM DEPTH	MINIMUM NUMBER OF BOLTS	ASD REACTION KIPS
W8	2	12.4
W10	2	13.8
W12	3	23.0
W14	3	26.4
W16	4	39.0
W18	5	53.0
W21	6	63.6
W24	7	74.2

TABLE ASSUMPTIONS:

- LEAST WEB THICKNESS FOR BEAM DEPTH SERIES
- 3/8" 36 KSI SINGLE SHEAR PLATE
- 3/2" DIA. A325 BOLTS W/THREADS INCLUDED
- STANDARD SIZE BOLT HOLES
- BEAM COPED TOP AND BOTTOM
- DISTANCE FROM END OF BEAM TO CENTER OF BOLT HOLES = 1/2" MINIMUM
- DISTANCE FROM TOP OF COPED WEB TO CENTER OF FIRST BOLT HOLE = 1/2" MINIMUM

NOTE:
UNLESS REACTIONS ARE NOTED ON PLANS, BEAM CONNECTIONS SHALL BE DESIGNED FOR THESE REACTIONS AND PROVIDED WITH THESE MINIMUM BOLT QUANTITIES.



AC HOTELS by MARRIOTT
Fore Street / Hancock Street / Thames Street
Portland, Maine

REVISION:
09-02-16 USN MARKUPS
10-05-16 ELEVATOR & FRAMING REVISIONS

ISSUED:
08-12-16 FOUNDATION & STEEL PERMIT
10-14-16 FOR CONSTRUCTION

project architect: KAK
drawn by: DLS

ROOF FRAMING PLAN

sheet number:
S3.06

PLAN NORTH **1** ROOF FRAMING PLAN
1/8" = 1'-0"