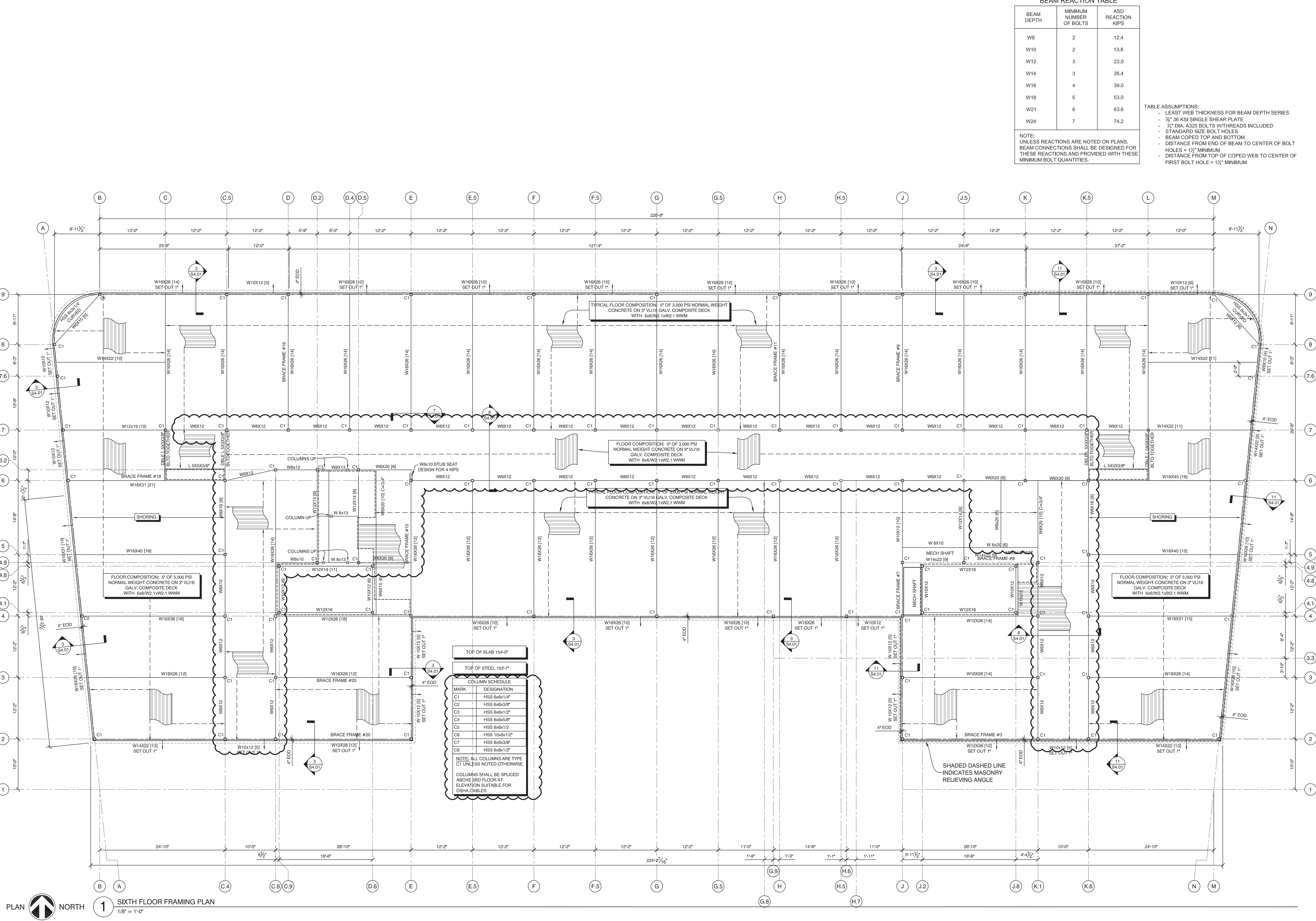


Thursday, October 13, 2016 2:07:47 PM

Copyright 2015 Opechee Construction Corporation



**BEAM REACTION TABLE**

BEAM DEPTH	MINIMUM NUMBER OF BOLTS	ASD REACTION KIPS
W8	2	12.4
W10	2	13.8
W12	3	23.0
W14	3	26.4
W16	4	39.0
W18	5	53.0
W21	6	63.6
W24	7	74.2

NOTE: UNLESS REACTIONS ARE NOTED ON PLANS, BEAM CONNECTIONS SHALL BE DESIGNED FOR THESE REACTIONS AND PROVIDED WITH THESE MINIMUM BOLT QUANTITIES.

- TABLE ASSUMPTIONS:**
- LEAST WEB THICKNESS FOR BEAM DEPTH SERIES
  - 3/4" 36 KSI SINGLE SHEAR PLATE
  - 3/4" DIA. A325 BOLTS WITH THREADS INCLUDED
  - STANDARD SIZE BOLT HOLES
  - BEAM COPED TOP AND BOTTOM
  - DISTANCE FROM END OF BEAM TO CENTER OF BOLT HOLES = 1/2" MINIMUM
  - DISTANCE FROM TOP OF COPED WEB TO CENTER OF FIRST BOLT HOLE = 1/4" MINIMUM

**COLUMN SCHEDULE**

MARK	DESIGNATION
C1	HSS 6x6x1/4"
C2	HSS 6x6x3/8"
C3	HSS 6x6x1/2"
C4	HSS 6x6x5/8"
C5	HSS 8x6x1/2"
C6	HSS 10x6x1/2"
C7	HSS 8x6x3/8"
C8	HSS 8x6x1/2"

NOTE: ALL COLUMNS ARE TYPE C1 UNLESS NOTED OTHERWISE.  
COLUMNS SHALL BE SPLICED ABOVE 3RD FLOOR AT ELEVATION SUITABLE FOR OSHA CABLES

**OPECHEE**  
CONSTRUCTION CORPORATION

11 CORPORATE DRIVE • BELMONT • NH 03220  
PHONE (603) 527-0066 • WWW.OPECHEE.COM

STATE OF MAINE  
JEFFREY S. NAWROCKI  
No. 6944  
LICENSED PROFESSIONAL ENGINEER  
10/12/16

**AC HOTELS by MARRIOTT**  
Fore Street / Hancock Street / Thames Street  
Portland, Maine

REVISION:  
09-02-16 JSN MARKUPS  
10-05-16 ELEVATOR & FRAMING REVISIONS

ISSUED:  
08-12-16 FOUNDATION & STEEL PERMIT  
10-14-16 FOR CONSTRUCTION

project architect: KAK  
drawn by: DLS

**SIXTH FLOOR FRAMING PLAN**  
sheet number:  
**S3.05**

PLAN NORTH  
**1** SIXTH FLOOR FRAMING PLAN  
1/8" = 1'-0"