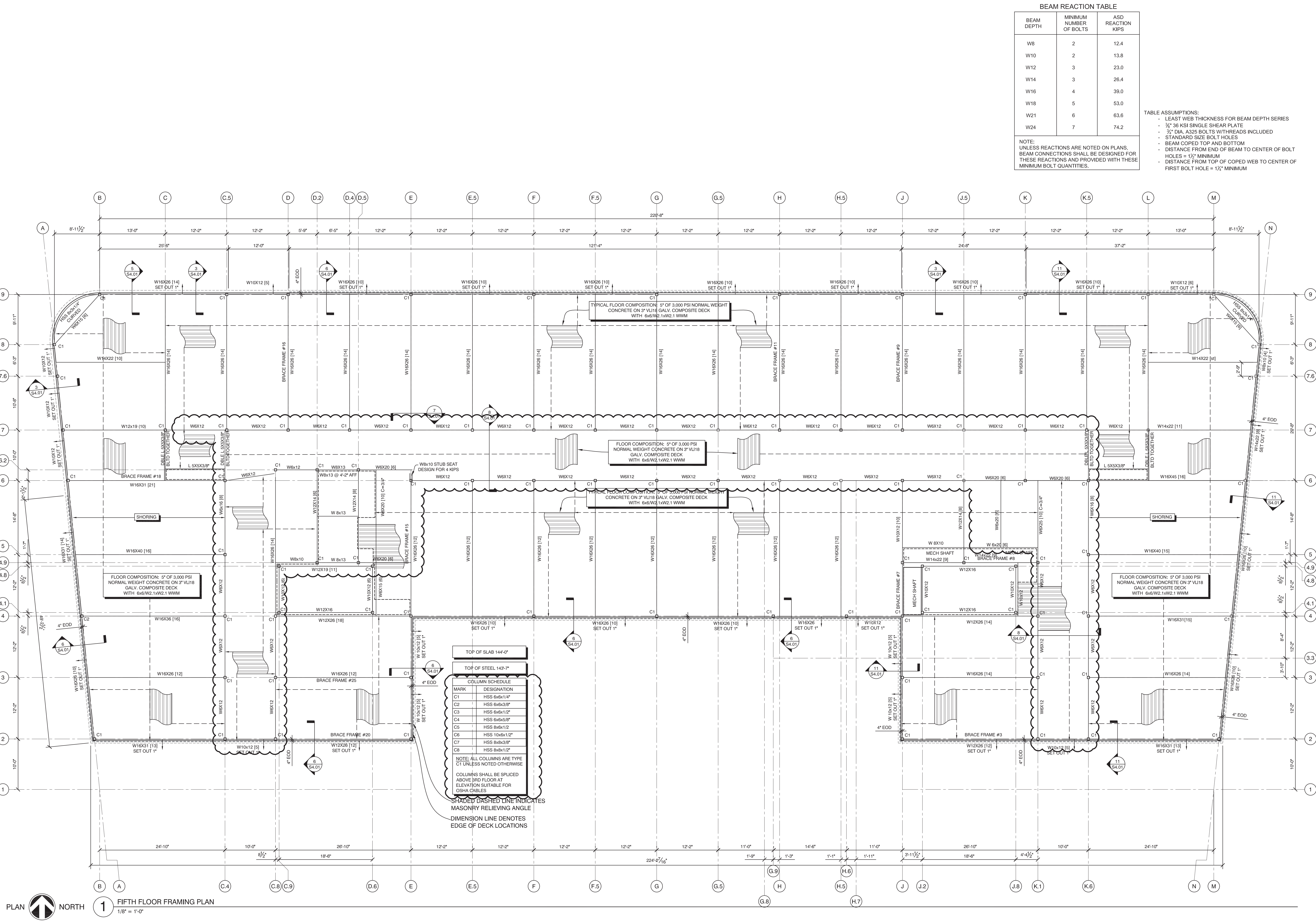


Thursday, October 13, 2016 2:07:08 PM

Copyright 2015 Opechee Construction Corporation



BEAM REACTION TABLE

BEAM DEPTH	MINIMUM NUMBER OF BOLTS	ASD REACTION KIPS
W8	2	12.4
W10	2	13.8
W12	3	23.0
W14	3	26.4
W16	4	39.0
W18	5	53.0
W21	6	63.6
W24	7	74.2

TABLE ASSUMPTIONS:
 - LEAST WEB THICKNESS FOR BEAM DEPTH SERIES
 - 3/4" 36 KSI SINGLE SHEAR PLATE
 - 3/4" DIA. A325 BOLTS WITH THREADS INCLUDED
 - STANDARD SIZE BOLT HOLES
 - BEAM COPED TOP AND BOTTOM
 - DISTANCE FROM END OF BEAM TO CENTER OF BOLT HOLES = 1/2" MINIMUM
 - DISTANCE FROM TOP OF COPED WEB TO CENTER OF FIRST BOLT HOLE = 1/4" MINIMUM

NOTE:
 UNLESS REACTIONS ARE NOTED ON PLANS, BEAM CONNECTIONS SHALL BE DESIGNED FOR THESE REACTIONS AND PROVIDED WITH THESE MINIMUM BOLT QUANTITIES.

TOP OF SLAB 144'-0"

TOP OF STEEL 143'-7"

MARK	DESIGNATION
C1	HSS 6x6x1/4"
C2	HSS 6x6x3/8"
C3	HSS 6x6x1/2"
C4	HSS 6x6x5/8"
C5	HSS 8x8x1/2"
C6	HSS 10x8x1/2"
C7	HSS 8x8x3/8"
C8	HSS 8x8x1/2"

NOTE: ALL COLUMNS ARE TYPE C1 UNLESS NOTED OTHERWISE.
 COLUMNS SHALL BE SPLICED ABOVE 3RD FLOOR AT ELEVATION SUITABLE FOR OSHA CABLES.

SHADE DASHED LINE INDICATES MASONRY RELIEVING ANGLE
 DIMENSION LINE DENOTES EDGE OF DECK LOCATIONS



AC HOTELS by MARRIOTT
 Fore Street / Hancock Street / Thames Street
 Portland, Maine

ISSUED:
 08-12-16 FOUNDATION & STEEL PERMIT
 10-14-16 FOR CONSTRUCTION

REVISION:
 09-02-16 ISN MARKUPS
 10-05-16 ELEVATOR & FRAMING REVISIONS

project architect: KAK
 drawn by: DLS

FIFTH FLOOR FRAMING PLAN
 sheet number:
S3.04

PLAN NORTH 1 FIFTH FLOOR FRAMING PLAN 1/8" = 1'-0"