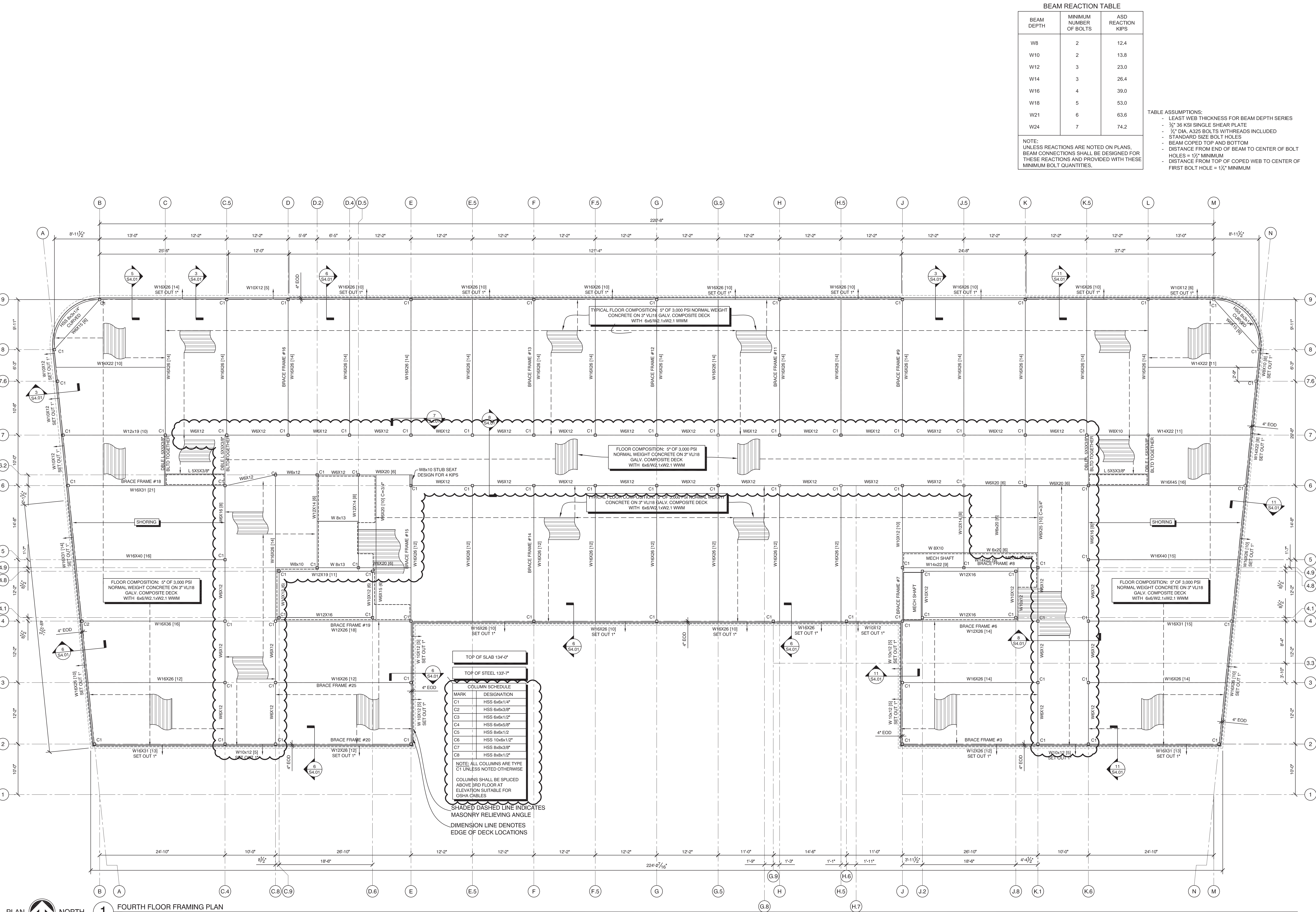


Thursday, October 13, 2016 2:06:27 PM

Copyright 2015 Opechee Construction Corporation



BEAM REACTION TABLE

BEAM DEPTH	MINIMUM NUMBER OF BOLTS	ASD REACTION KIPS
W8	2	12.4
W10	2	13.8
W12	3	23.0
W14	3	26.4
W16	4	39.0
W18	5	53.0
W21	6	63.6
W24	7	74.2

NOTE: UNLESS REACTIONS ARE NOTED ON PLANS, BEAM CONNECTIONS SHALL BE DESIGNED FOR THESE REACTIONS AND PROVIDED WITH THESE MINIMUM BOLT QUANTITIES.

TABLE ASSUMPTIONS:

- LEAST WEB THICKNESS FOR BEAM DEPTH SERIES
- 3/8" X 3/8" SINGLE SHEAR PLATE
- 3/4" DIA. A325 BOLTS W/THREADS INCLUDED
- STANDARD SIZE BOLT HOLES
- BEAM COPED TOP AND BOTTOM
- DISTANCE FROM END OF BEAM TO CENTER OF BOLT HOLES = 1 1/2" MINIMUM
- DISTANCE FROM TOP OF COPED WEB TO CENTER OF FIRST BOLT HOLE = 1 1/2" MINIMUM

COLUMN SCHEDULE

MARK	DESIGNATION
C1	HSS 6x6x1/4"
C2	HSS 6x6x3/8"
C3	HSS 6x6x1/2"
C4	HSS 6x6x5/8"
C5	HSS 8x8x1/2"
C6	HSS 10x10x1/2"
C7	HSS 8x8x3/8"
C8	HSS 8x8x1/2"

NOTE: ALL COLUMNS ARE TYPE C1 UNLESS NOTED OTHERWISE.
COLUMNS SHALL BE SPICED ABOVE 3RD FLOOR AT ELEVATION SUITABLE FOR OSHA CABLES

SHADED DASHED LINE INDICATES MASONRY RELIEVING ANGLE
DIMENSION LINE DENOTES EDGE OF DECK LOCATIONS



AC HOTELS by MARRIOTT
Fore Street / Hancock Street / Thames Street
Portland, Maine

REVISION:
09-02-16 USN MARKUPS
10-05-16 ELEVATOR & FRAMING REVISIONS

ISSUED:
08-12-16 FOUNDATION & STEEL PERMIT
10-14-16 FOR CONSTRUCTION

project architect: KAK
drawn by: DLS

FOURTH FLOOR FRAMING PLAN

sheet number:
S3.03

PLAN NORTH
1 FOURTH FLOOR FRAMING PLAN
1/8" = 1'-0"