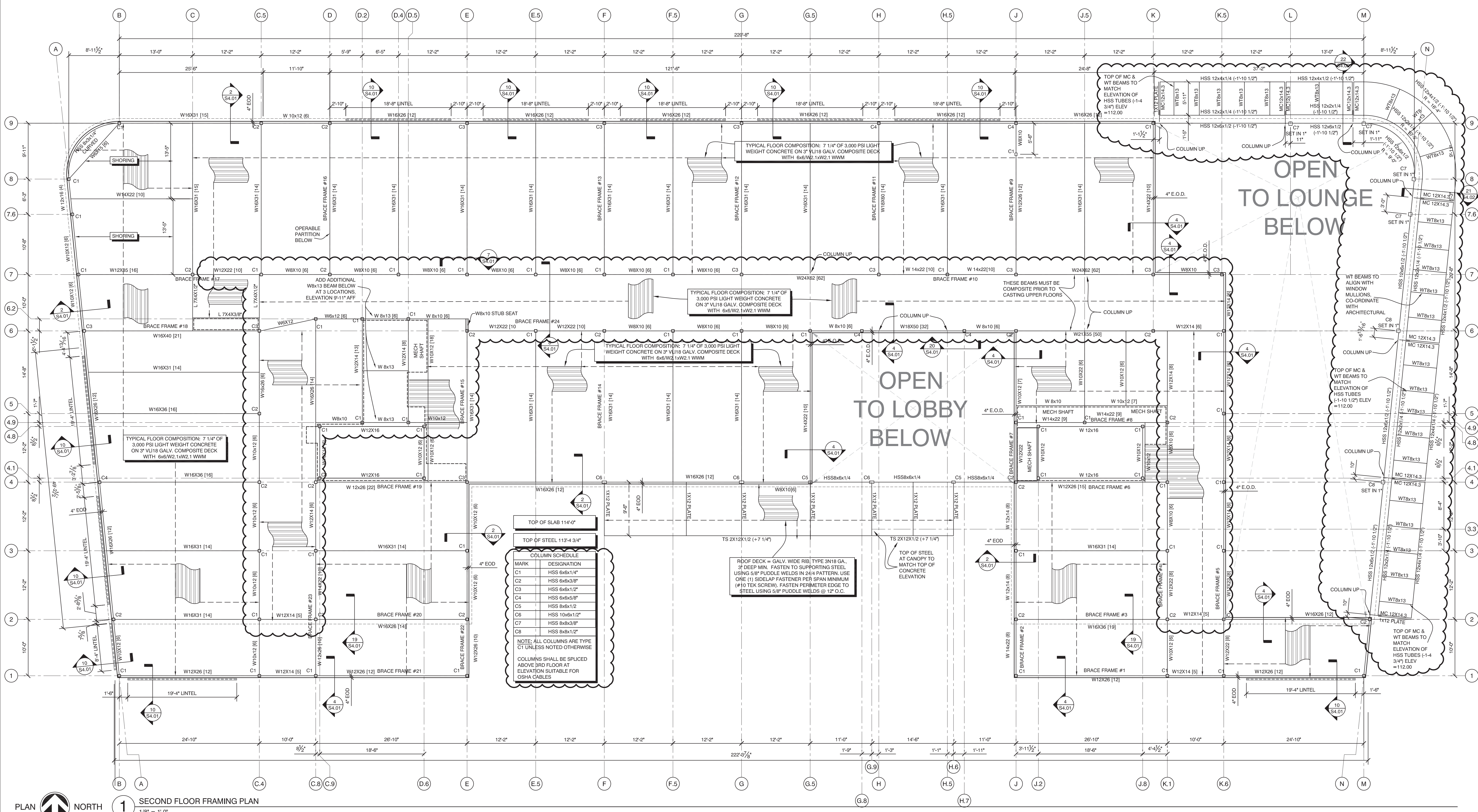


BEAM REACTION TABLE

BEAM DEPTH	MINIMUM NUMBER OF BOLTS	ASD REACTION KIPS
W8	2	12.4
W10	2	13.8
W12	3	23.0
W14	3	26.4
W16	4	39.0
W18	5	53.0
W21	6	63.6
W24	7	74.2

TABLE ASSUMPTIONS:  
 - LEAST WEB THICKNESS FOR BEAM DEPTH SERIES  
 - 3/4" 36 KSI SINGLE SHEAR PLATE  
 - 3/4" DIA. A325 BOLTS WITH THREADS INCLUDED  
 - STANDARD SIZE BOLT HOLES  
 - BEAM COPED TOP AND BOTTOM  
 - DISTANCE FROM END OF BEAM TO CENTER OF HOLES = 1/2" MINIMUM  
 - DISTANCE FROM TOP OF COPED WEB TO CENTER OF FIRST BOLT HOLE = 1/2" MINIMUM

NOTE:  
 UNLESS REACTIONS ARE NOTED ON PLANS, BEAM CONNECTIONS SHALL BE DESIGNED FOR THESE REACTIONS AND PROVIDED WITH THESE MINIMUM BOLT QUANTITIES.



TOP OF SLAB 114'-0"

TOP OF STEEL 113'-4 3/4"

MARK	DESIGNATION
C1	HSS 6x6x1/4"
C2	HSS 6x6x3/8"
C3	HSS 6x6x1/2"
C4	HSS 6x6x5/8"
C5	HSS 8x8x1/2"
C6	HSS 10x10x1/2"
C7	HSS 8x8x3/8"
C8	HSS 8x8x1/2"

NOTE: ALL COLUMNS ARE TYPE C1 UNLESS NOTED OTHERWISE.  
 COLUMNS SHALL BE SPLICED ABOVE 3RD FLOOR AT ELEVATION SUITABLE FOR OSHA CABLES

**AC HOTELS by MARRIOTT**  
 Fore Street / Hancock Street / Thames Street  
 Portland, Maine

REVISION:  
 09-02-16 USN MARKUPS  
 10-05-16 ELEVATOR & FRAMING REVISIONS

ISSUED:  
 08-12-16 FOUNDATION & STEEL PERMIT  
 10-14-16 FOR CONSTRUCTION

project architect: KAK  
 drawn by: DLS

**SECOND FLOOR FRAMING PLAN**

sheet number:  
**S3.01**