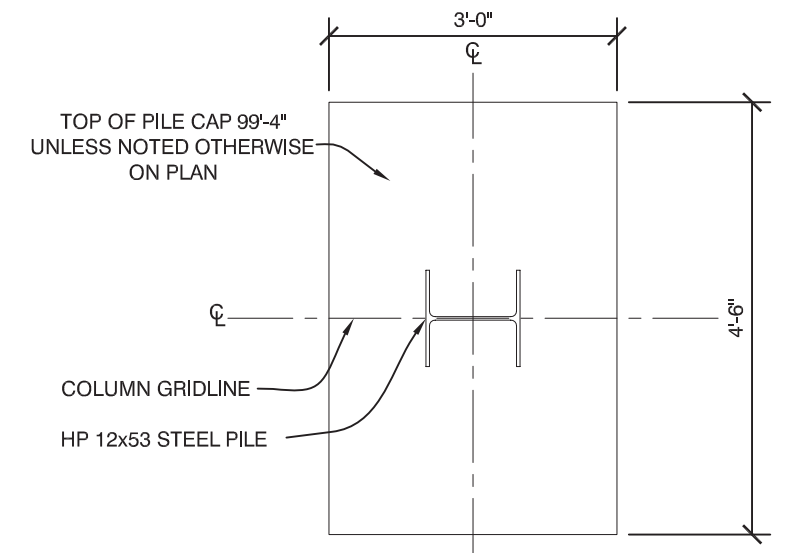


Thursday, October 20, 2016 9:23:11 AM

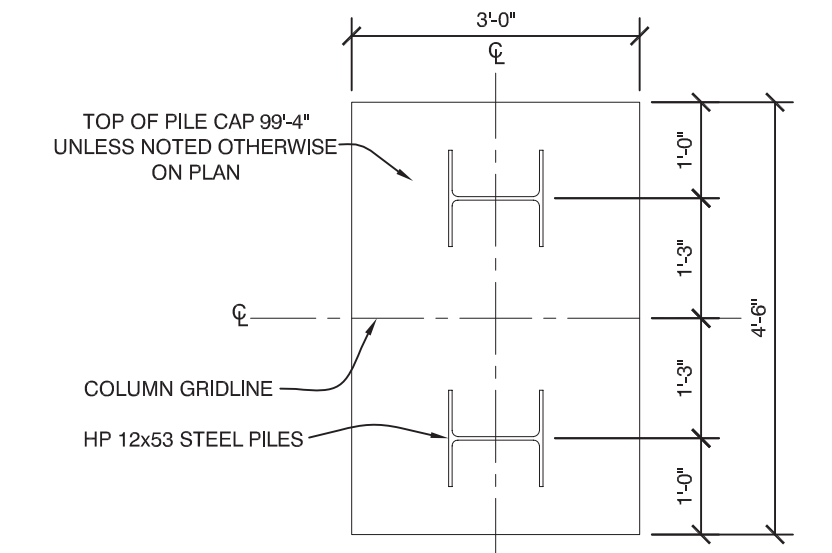
PILE CAP SCHEDULE			
TYPE	SIZE	REINFORCING	TOP
	WIDTHxLENGTHxDEPTH	BOTTOM	
F-3	3'-0"x4'-6"x3'-0"	#6 BARS @ 12" EACH WAY	#6 BARS @ 12" EACH WAY
F-3.5	3'-6"x3'-6"x1'-6"	#6 BARS @ 12" EACH WAY	#6 BARS @ 12" EACH WAY
F-4.5	4'-6"x4'-6"x3'-0"	#6 BARS @ 12" EACH WAY	#6 BARS @ 12" EACH WAY

NOTE: ALL REINFORCING MATS TO BE TIED AND CHAIRED 3" ABOVE SOIL.

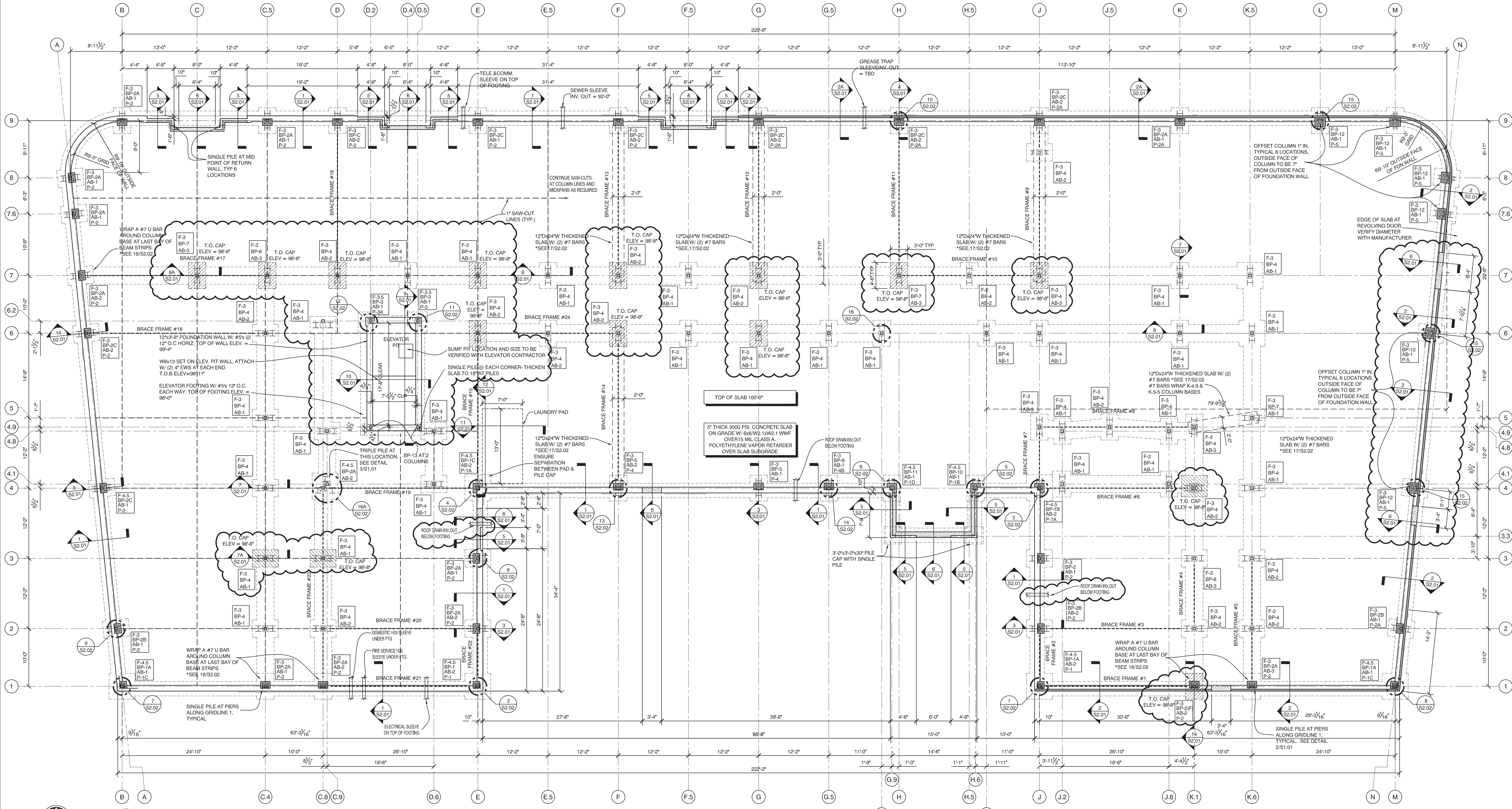
NOTE: ALL TYPICAL 3'-0" x 4'-6" x 3'-0" PILE CAPS TO HAVE (2) PILES PER DETAIL 1/S1.01 UNLESS NOTED OTHERWISE ON FOUNDATION PLAN



2 TYPICAL SINGLE PILE CAP  
1/2" = 1'-0"



1 TYPICAL DOUBLE PILE CAP  
1/2" = 1'-0"



PLAN NORTH 1 FOUNDATION PLAN  
1/8" = 1'-0"



**AC HOTELS by MARRIOTT**  
Fore Street / Hancock Street / Thames Street  
Portland, Maine

REVISION:  
09-02-16 USN MARKUPS  
10-05-16 ELEVATOR & FRAMING REVISIONS

ISSUED:  
08-12-16 FOUNDATION & STEEL PERMIT  
10-14-16 FOR CONSTRUCTION

project architect: KAK  
drawn by: DLS

FOUNDATION PLAN

sheet number:  
**S1.01**