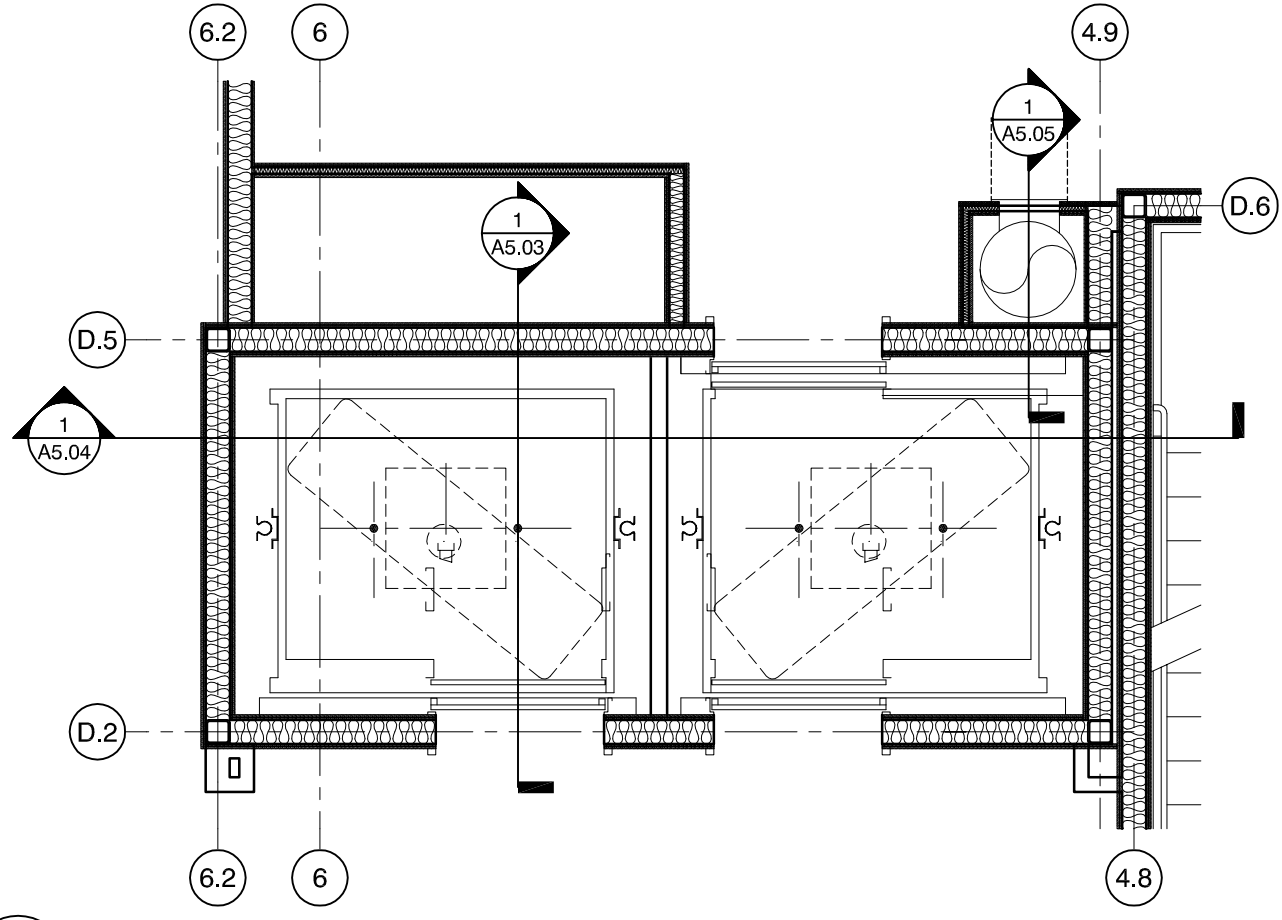
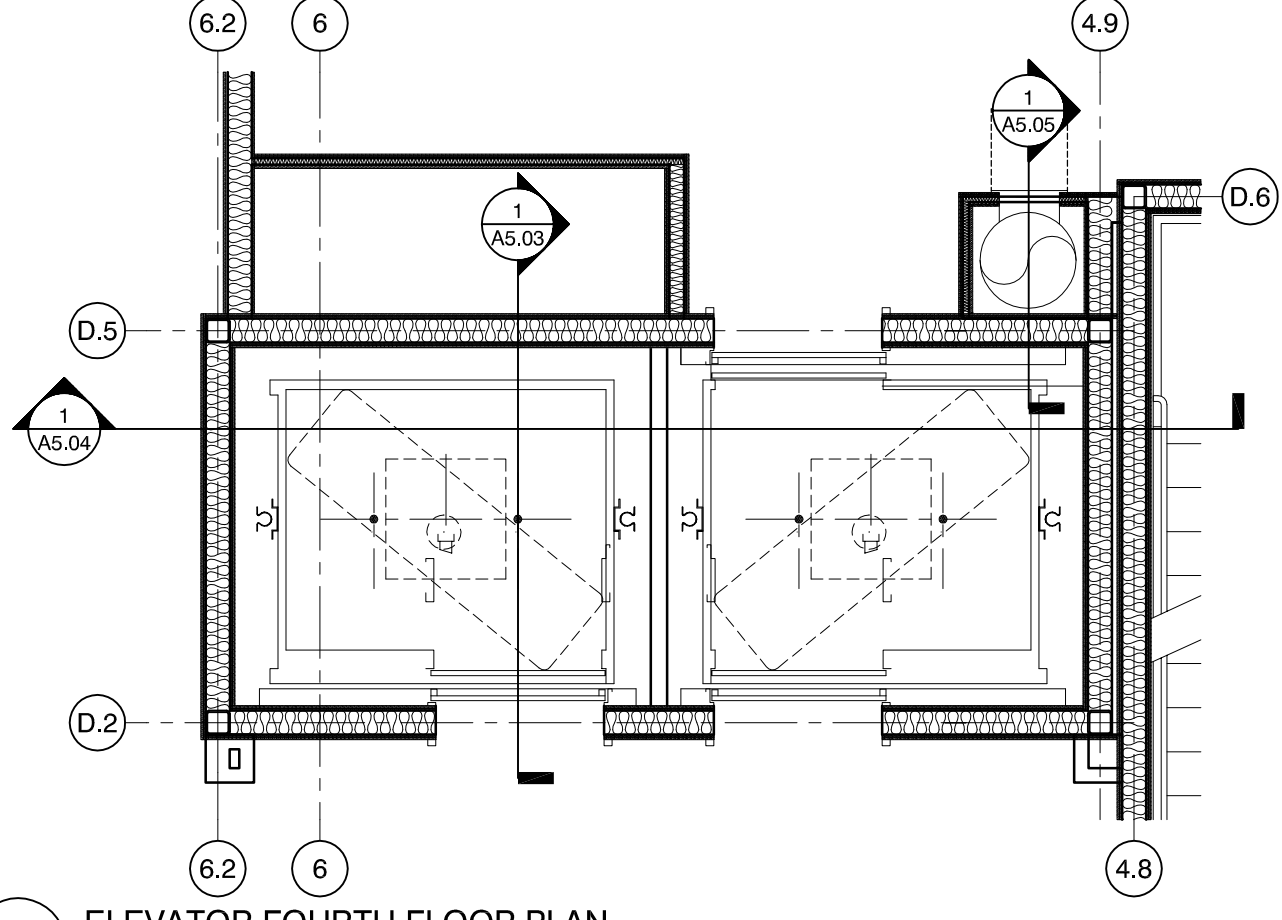


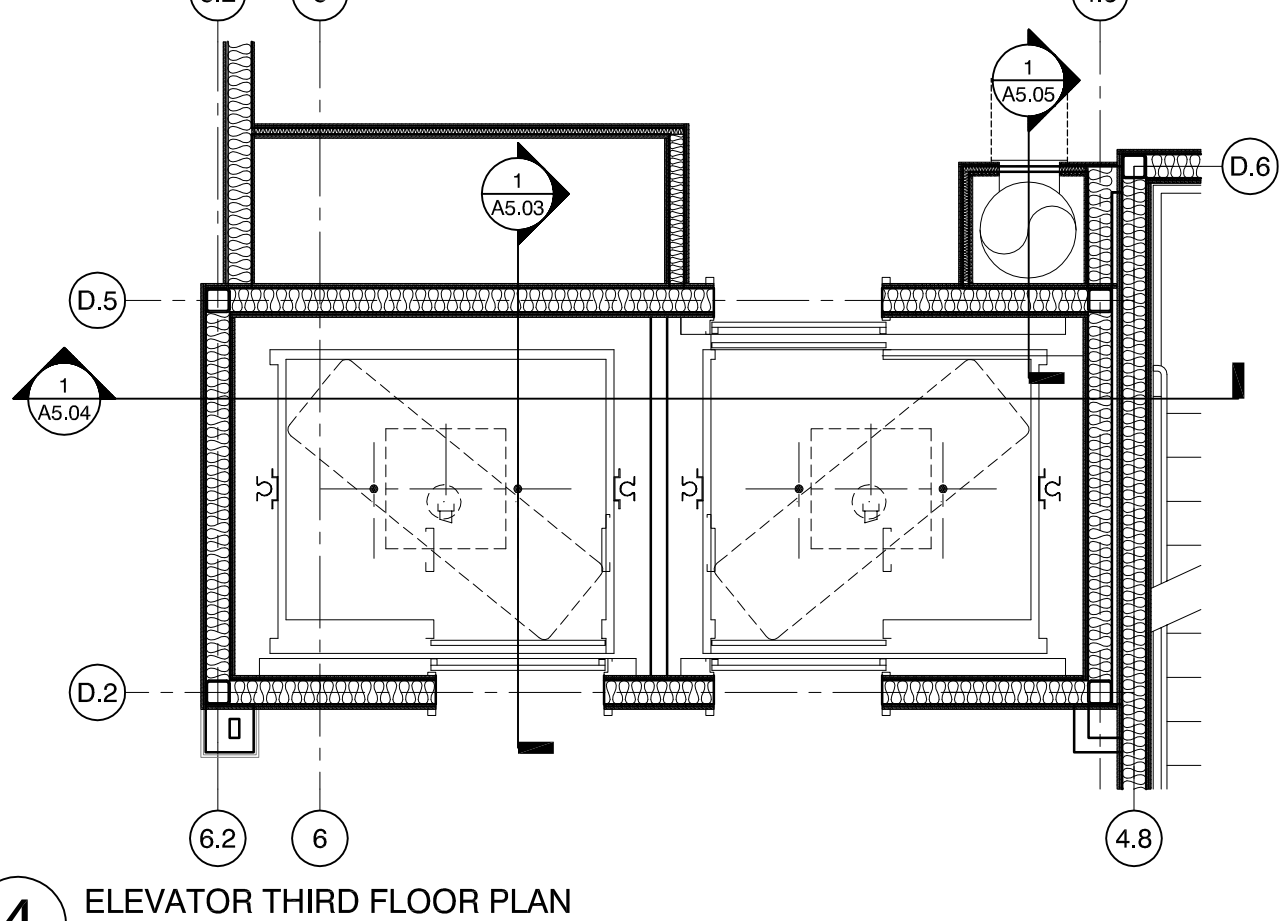
7 ELEVATOR SIXTH FLOOR PLAN
1/4" = 1'-0"



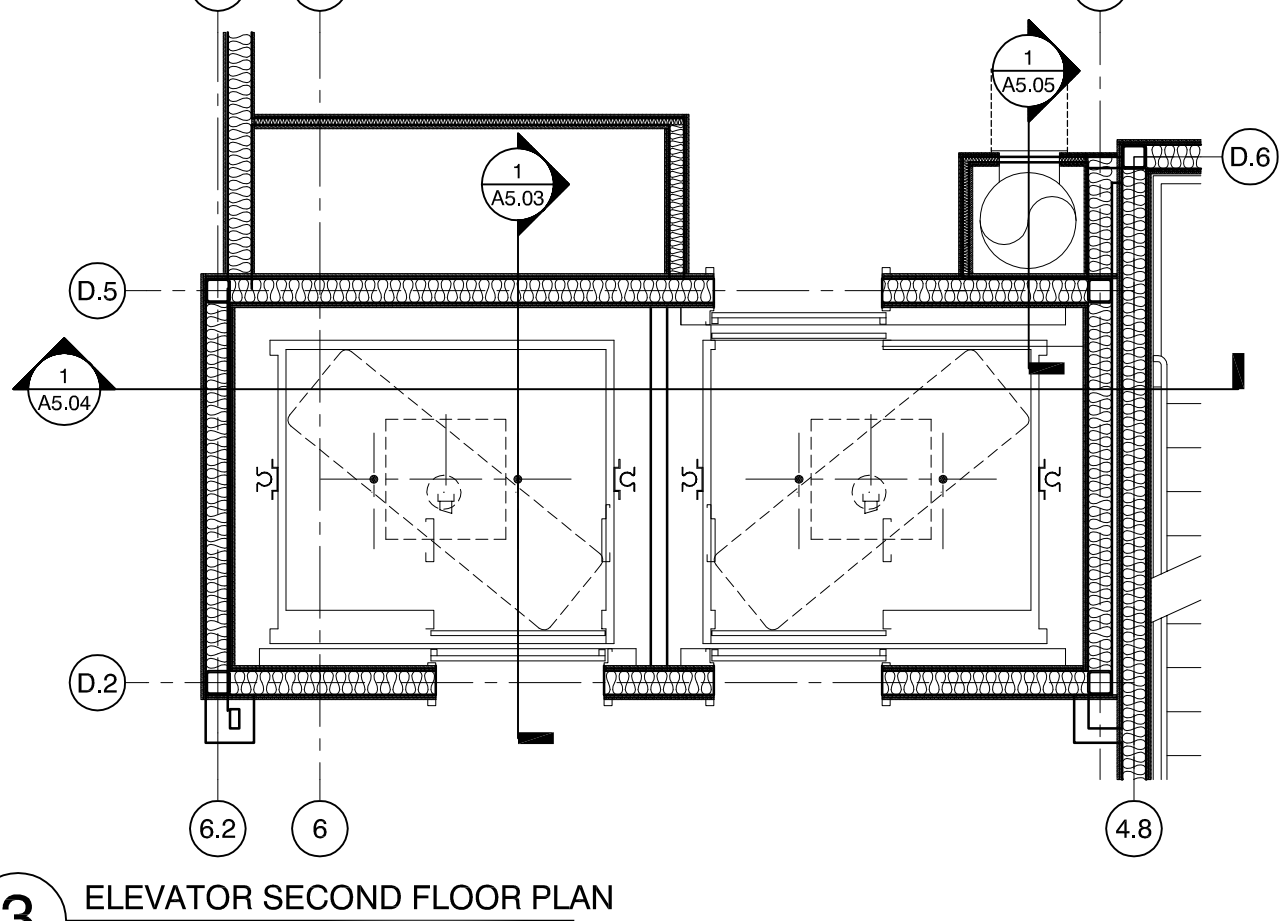
6 ELEVATOR FIFTH FLOOR PLAN
1/4" = 1'-0"



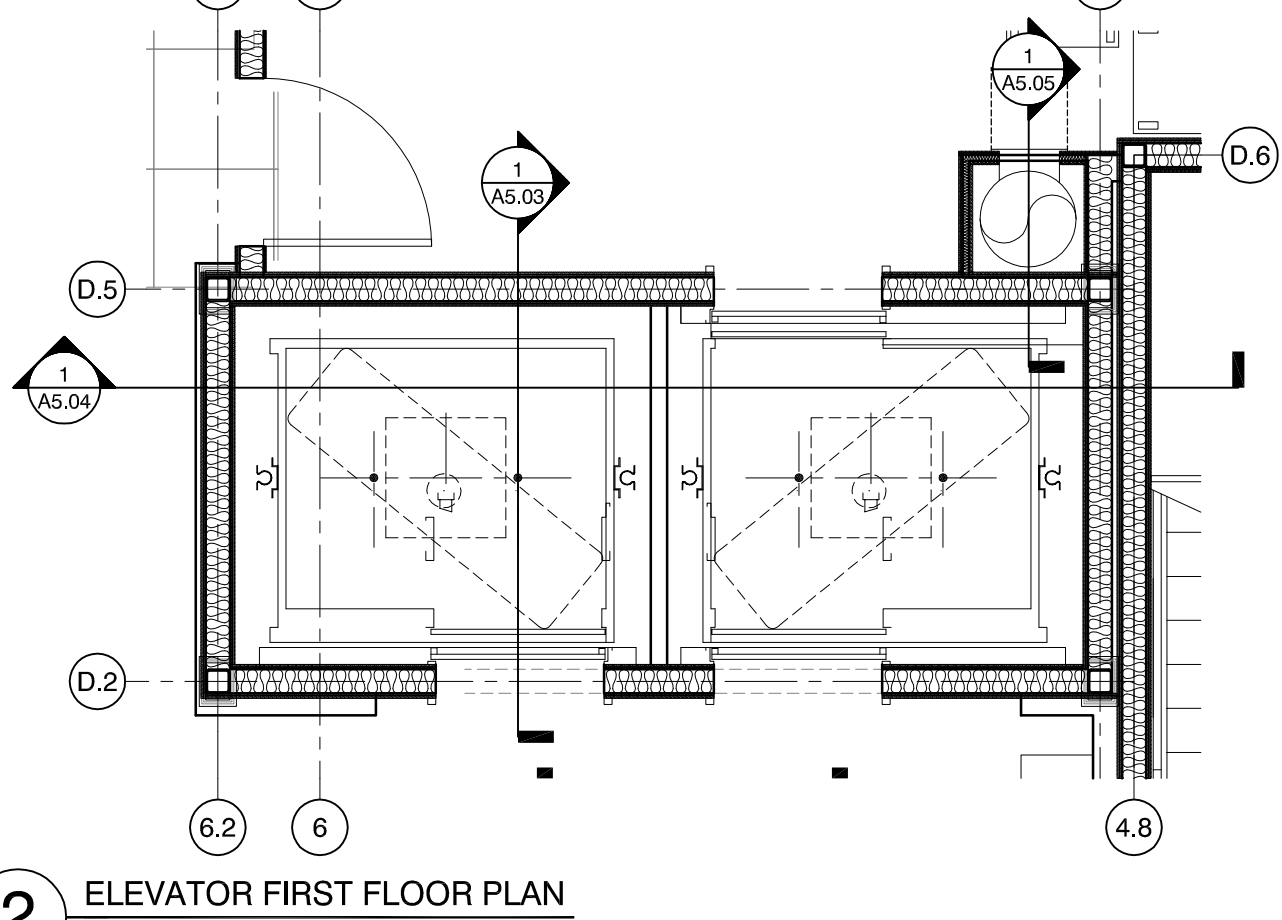
5 ELEVATOR FOURTH FLOOR PLAN
1/4" = 1'-0"



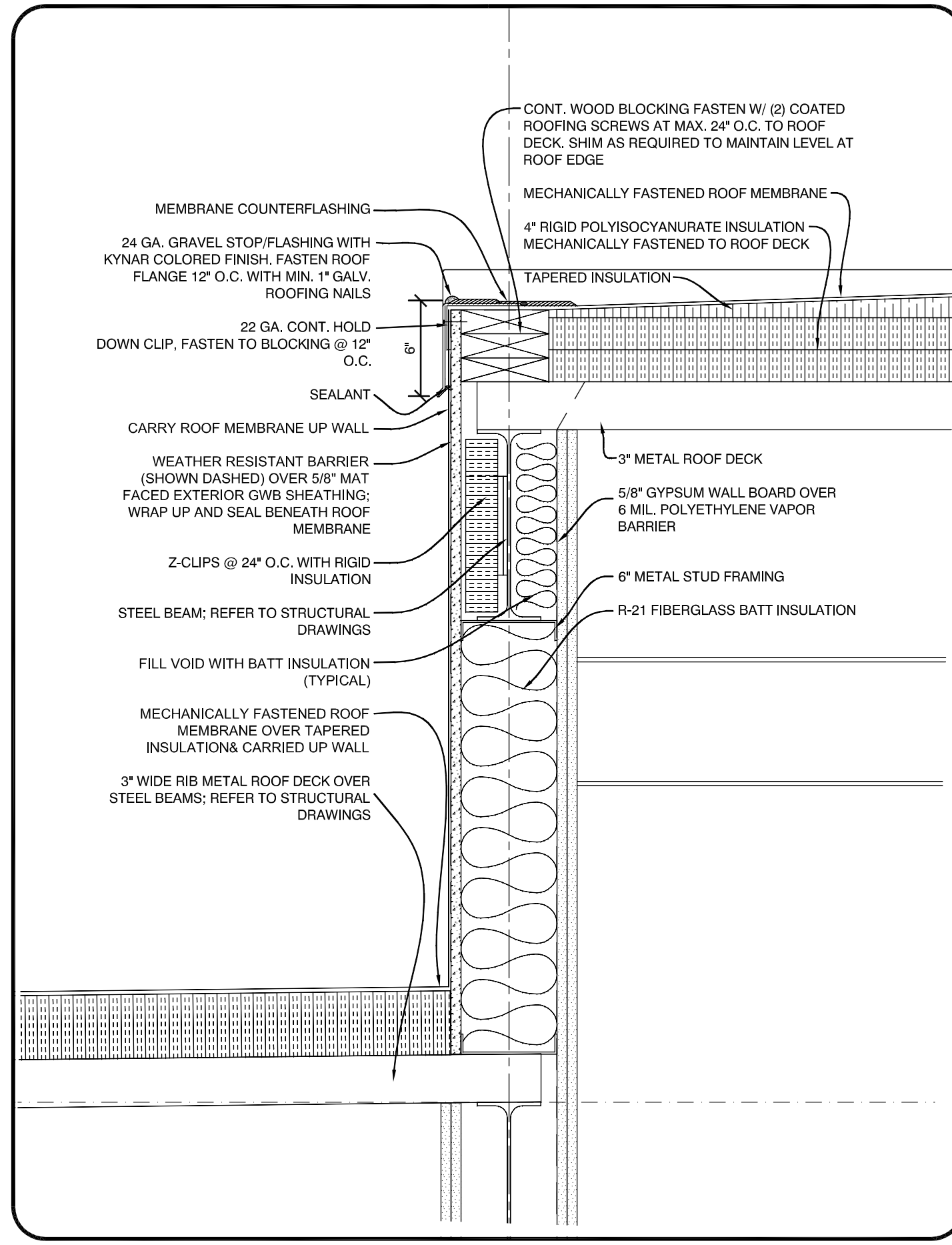
4 ELEVATOR THIRD FLOOR PLAN
1/4" = 1'-0"



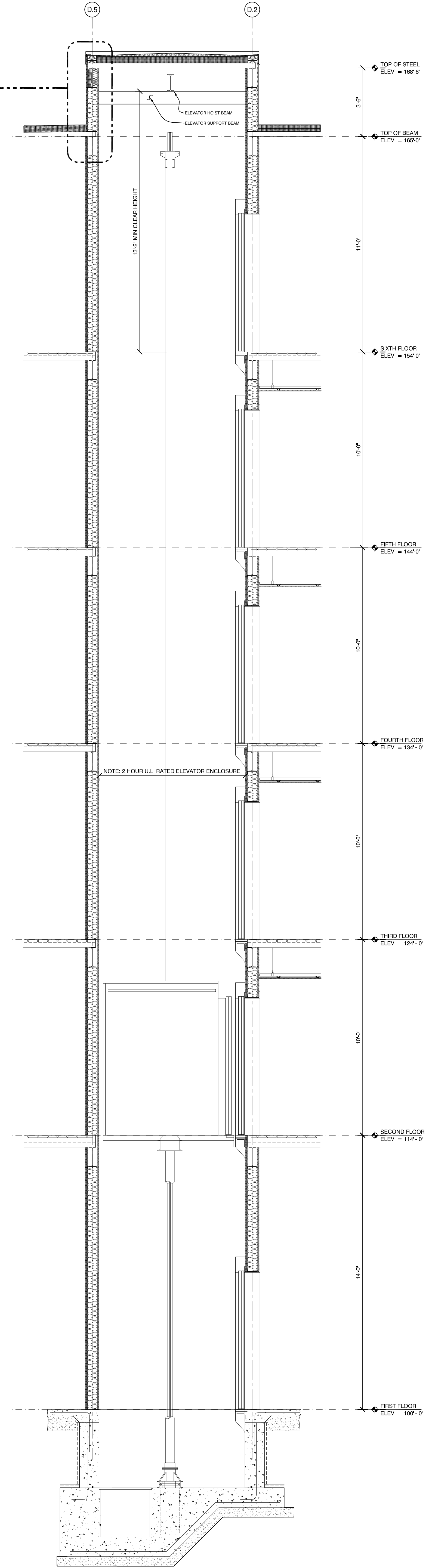
3 ELEVATOR SECOND FLOOR PLAN
1/4" = 1'-0"



2 ELEVATOR FIRST FLOOR PLAN
1/4" = 1'-0"



ELEVATOR ROOF EAVE DETAIL
1 1/2" = 1'-0"



1 ELEVATOR SECTION
3/8\" = 1'-0"

<p>A5.03</p> <p>ELEVATOR SECTION & PLAN DETAILS</p> <p>sheet number:</p>	<p>project architect: KAK</p> <p>drawn by: DLS</p>	<p>ISSUED:</p> <p>10-18-16 60% MARRIOTT REVIEW</p> <p>10-21-16 BUILDING SHELL PERMIT</p>	<p>REVISION:</p> <ul style="list-style-type: none"> • • • 	<p>AC HOTELS by MARRIOTT</p> <p>Fore Street / Hancock Street / Thames Street Portland, Maine</p>		<p>11 CORPORATE DRIVE • BELMONT • NH 03220 PHONE (603) 527-9090 • WWW.OPECHEE.COM</p>
---	--	--	--	---	--	---