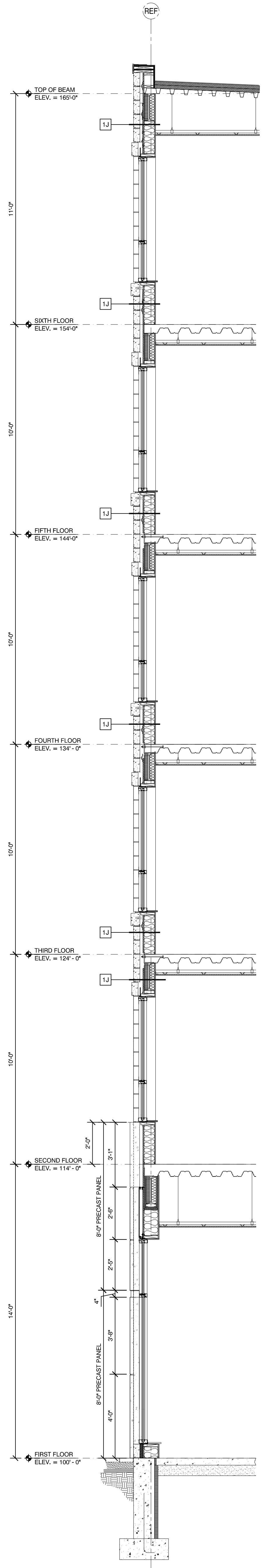


35 WALL SECTION
SCALE: 3/8" = 1'-0"



36 WALL SECTION
SCALE: 3/8" = 1'-0"

<p>A4.22</p>	<p>WALL SECTIONS</p>	<p>ISSUED:</p> <p>10-18-16 60% MARRIOTT REVIEW 10-21-16 BUILDING SHELL PERMIT</p>	<p>REVISION:</p> <ul style="list-style-type: none"> • • • 	<p>AC HOTELS by MARRIOTT</p> <p>Fore Street / Hancock Street / Thames Street Portland, Maine</p>		<p>11 CORPORATE DRIVE • BELMONT • NH 03220 PHONE (603) 527-9090 • WWW.OPECHEE.COM</p>
	<p>sheet number:</p>	<p>project architect: KAK</p> <p>drawn by: DLS</p>				