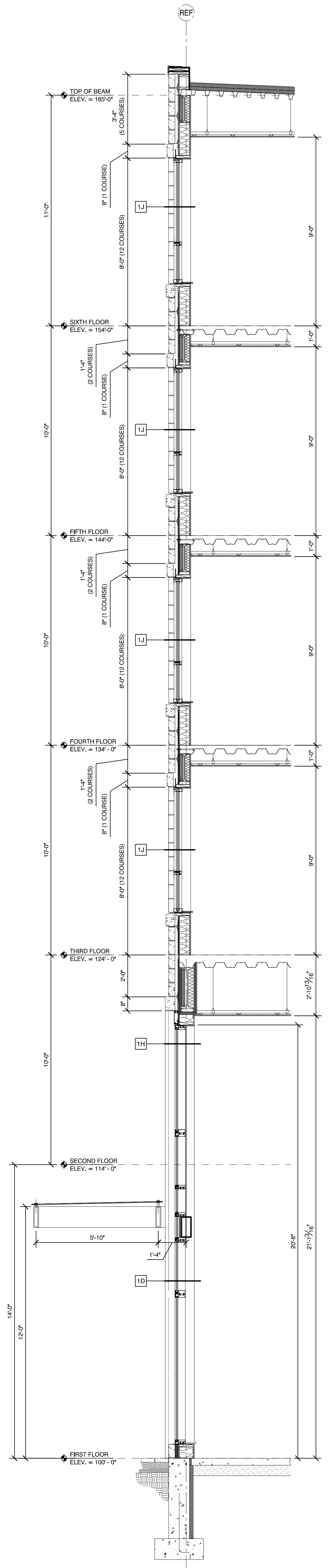


28 WALL SECTION
SCALE: 3/8" = 1'-0"



29 WALL SECTION
SCALE: 3/8" = 1'-0"

4.18

WALL SECTIONS

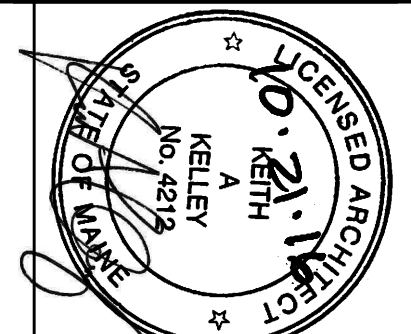
project architect: KAK
drawn by: DLS

ISSUED:
10-18-16 60% MARRIOTT REVIEW
10-21-16 BUILDING SHELL PERMIT

REVISION:
.
.
.
.

AC HOTELS by MARRIOTT

Fore Street / Hancock Street / Thames Street
Portland, Maine



11 CORPORATE DRIVE • BELMONT • NH 03220
PHONE (603) 527-9090 • WWW.OPECHEE.COM