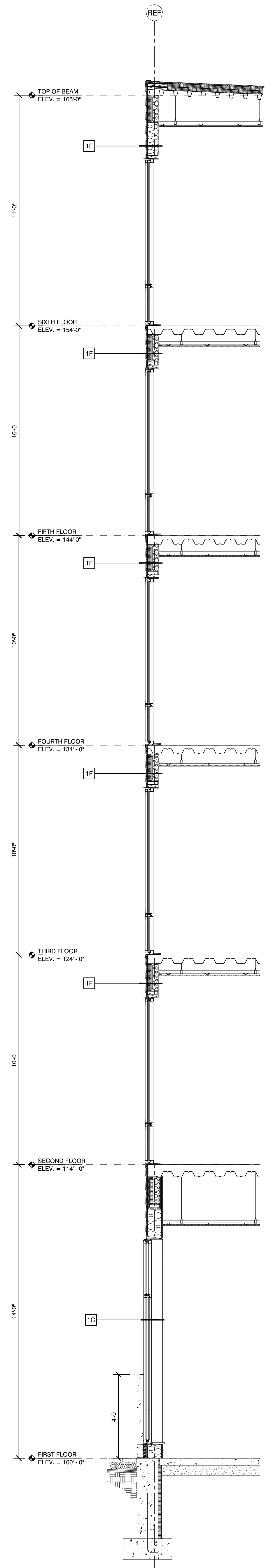


22 WALL SECTION  
SCALE: 3/8" = 1'-0"



23 WALL SECTION  
SCALE: 3/8" = 1'-0"

A4.15

sheet number:

WALL SECTIONS

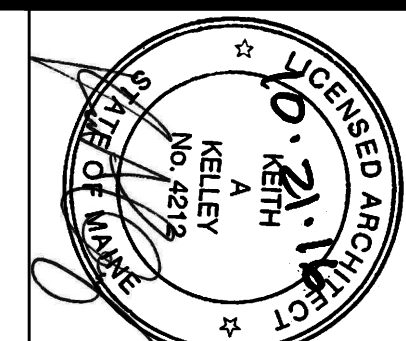
project architect:  
drawn by: KAK  
DLS

ISSUED:  
10-18-16 60% MARRIOTT REVIEW  
10-21-16 BUILDING SHELL PERMIT

REVISION:  
.  
.  
.  
.

AC HOTELS by MARRIOTT

Fore Street / Hancock Street / Thames Street  
Portland, Maine



11 CORPORATE DRIVE • BELMONT • NH 03220  
PHONE (603) 527-9090 • WWW.OPECHEE.COM