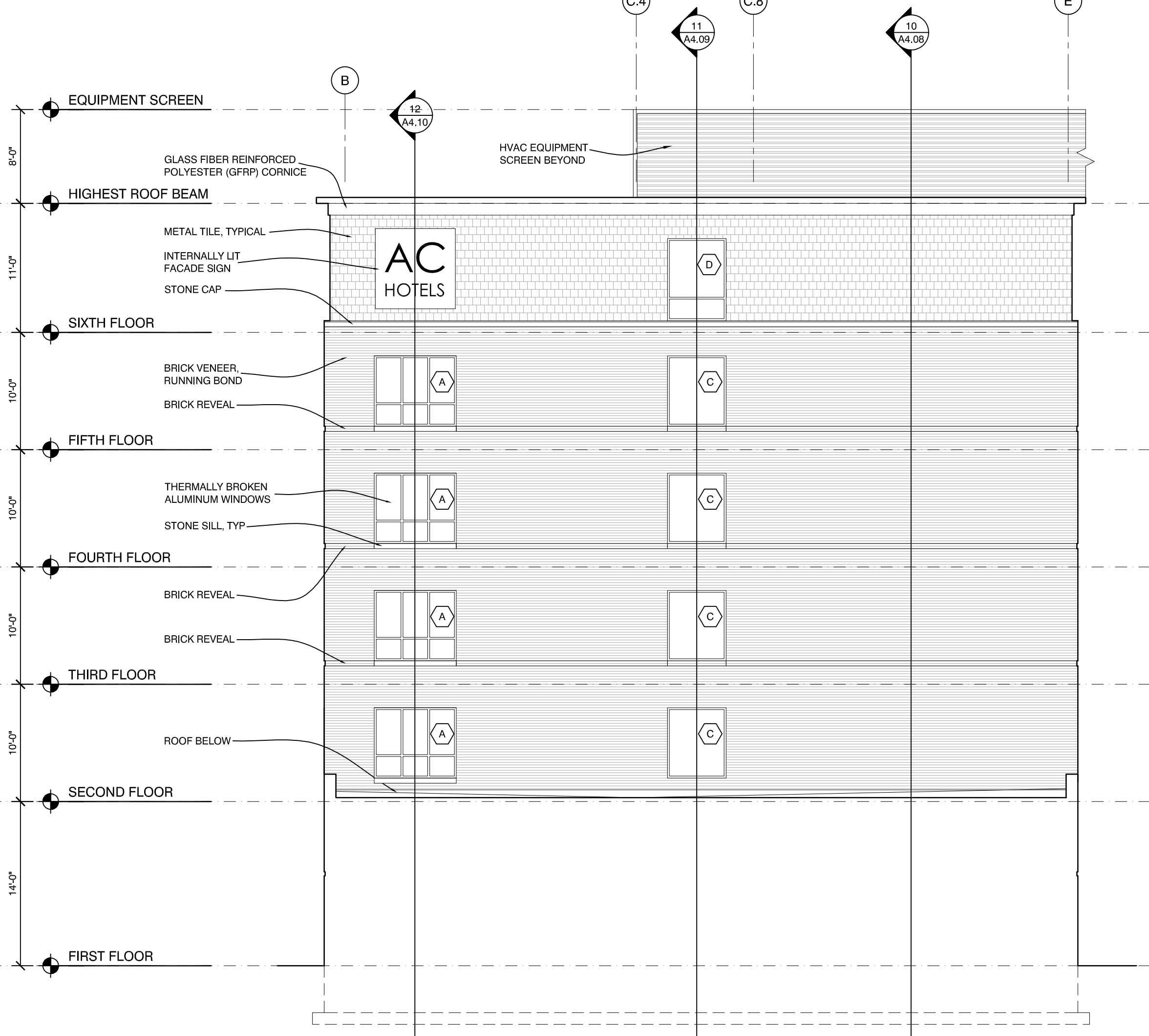


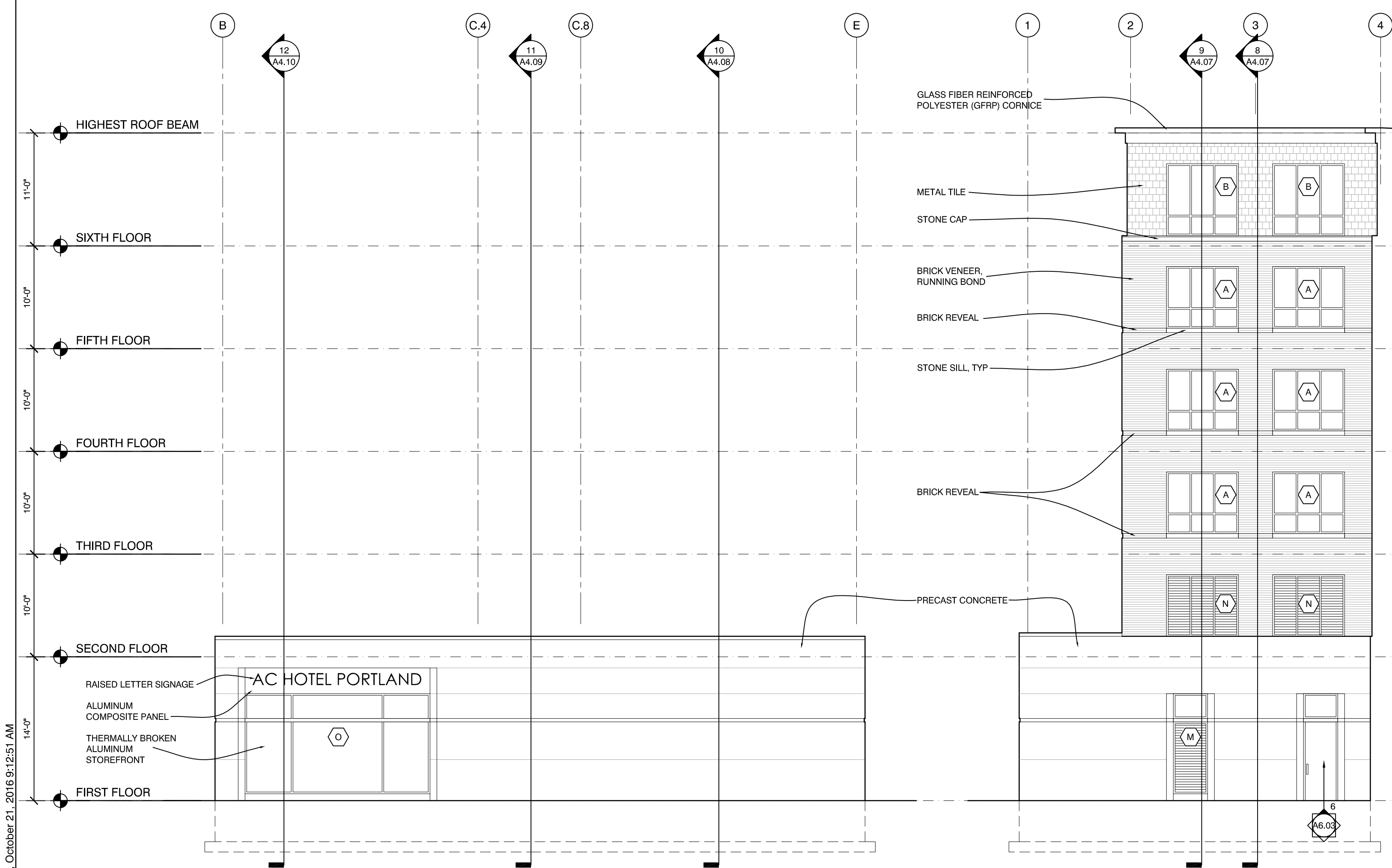
Friday, October 21, 2016 9:12:51 AM



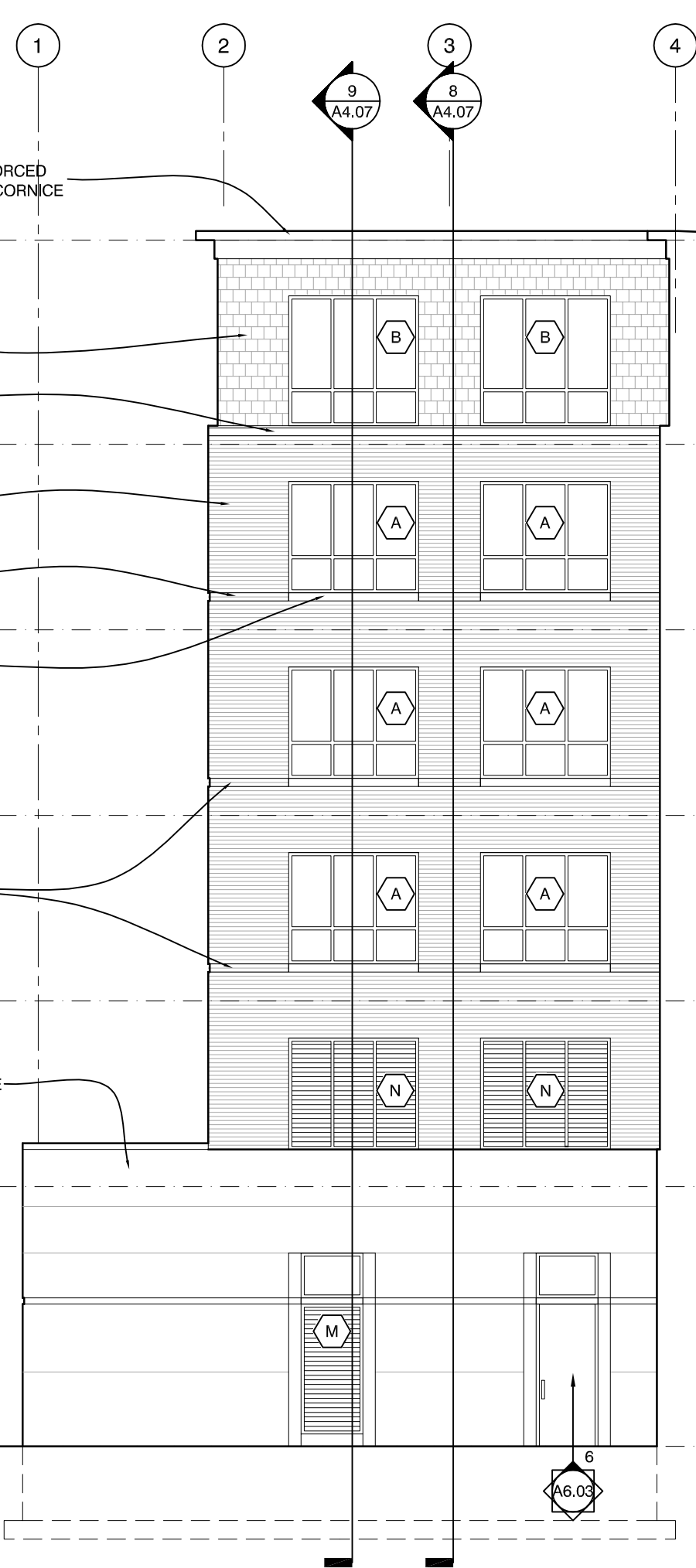
5 WEST EXTERIOR ELEVATION
1/8" = 1'-0"



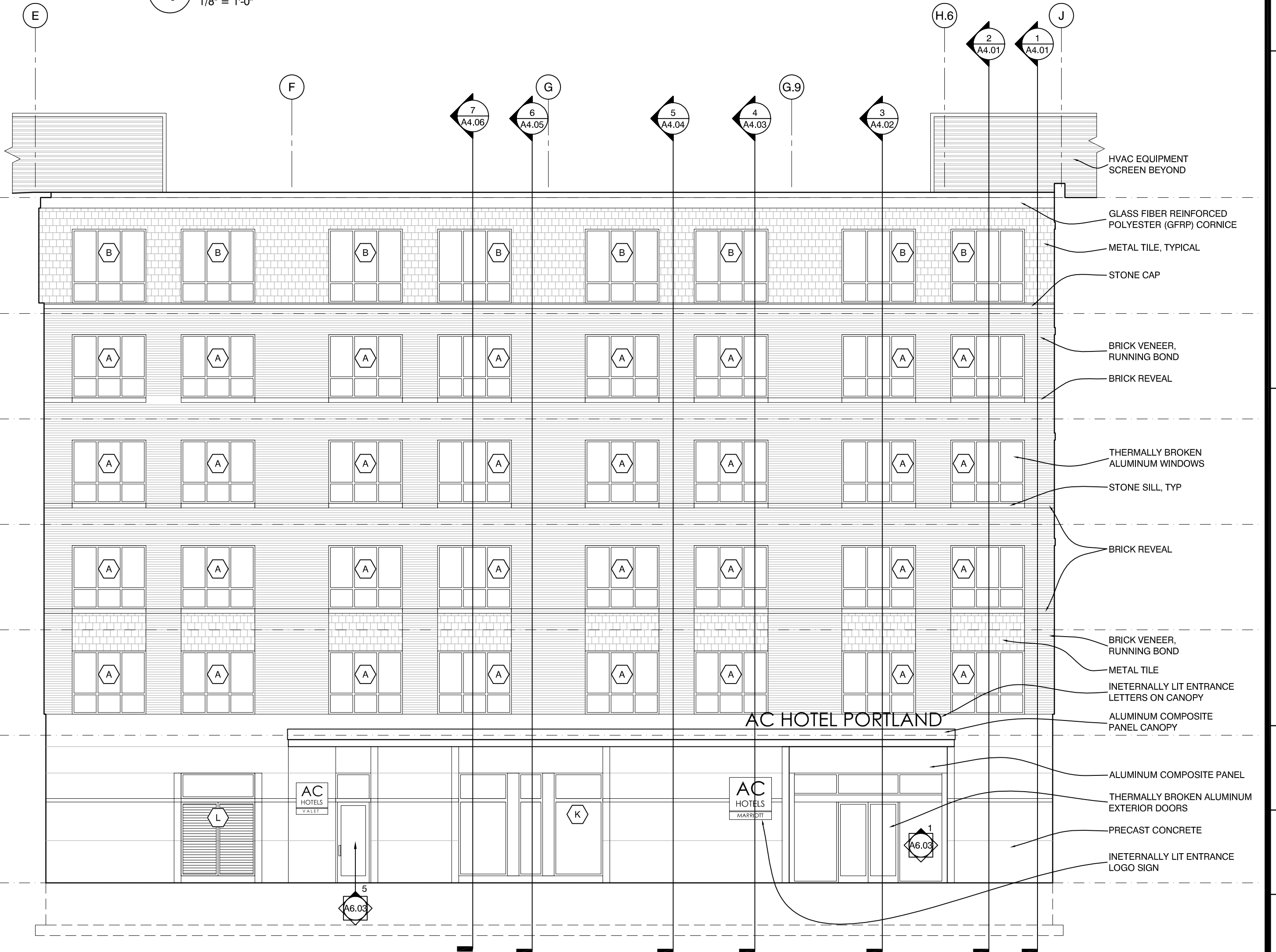
4 SOUTH LEVELS 2-6 EXTERIOR ELEVATION
1/8" = 1'-0"



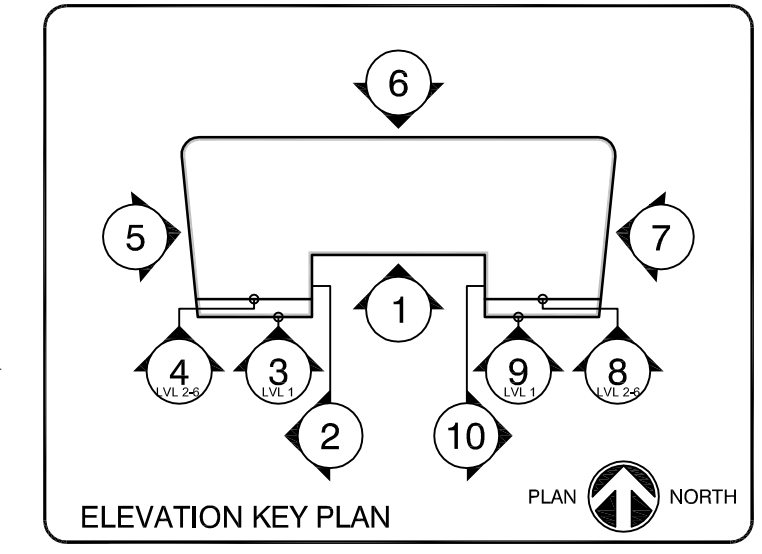
3 SOUTH LEVEL 1 EXTERIOR ELEVATION
1/8" = 1'-0"



2 EAST INSIDE CORNER EXTERIOR ELEVATION
1/8" = 1'-0"



1 SOUTH EXTERIOR ELEVATION
1/8" = 1'-0"



OPECHEE
CONSTRUCTION CORPORATION
11 CORPORATE DRIVE • BELMONT • NH 03220
PHONE (603) 527-2000 • WWW.OPECHEE.COM



AC HOTELS by MARRIOTT
Fore Street / Hancock Street / Thames Street
Portland, Maine

REVISION:

ISSUED:
08-12-16 FOUNDATION & STEEL PERMIT
10-18-16 60% MARRIOTT REVIEW
10-21-16 BUILDING SHELL PERMIT

project architect: KAK
drawn by: DLS

EXTERIOR BUILDING ELEVATIONS

sheet number:

A3.01