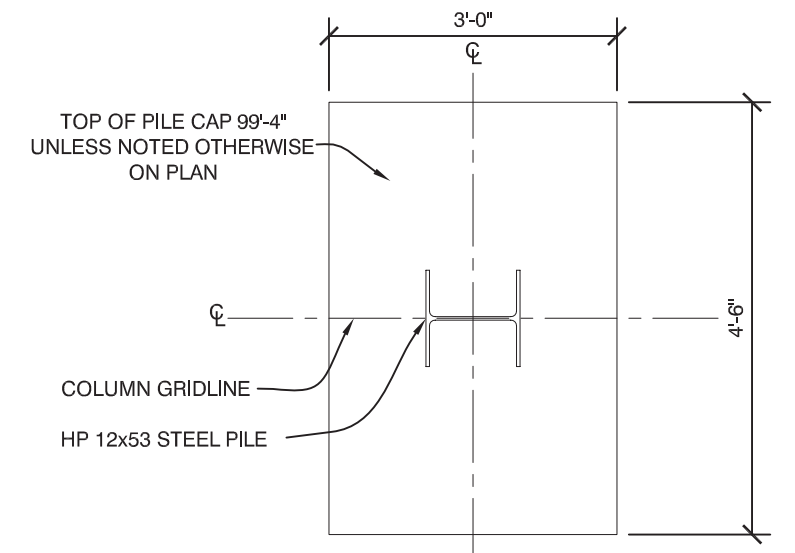


Copyright 2015 Opechee Construction Corporation
Wednesday, October 05, 2016 2:38:24 PM

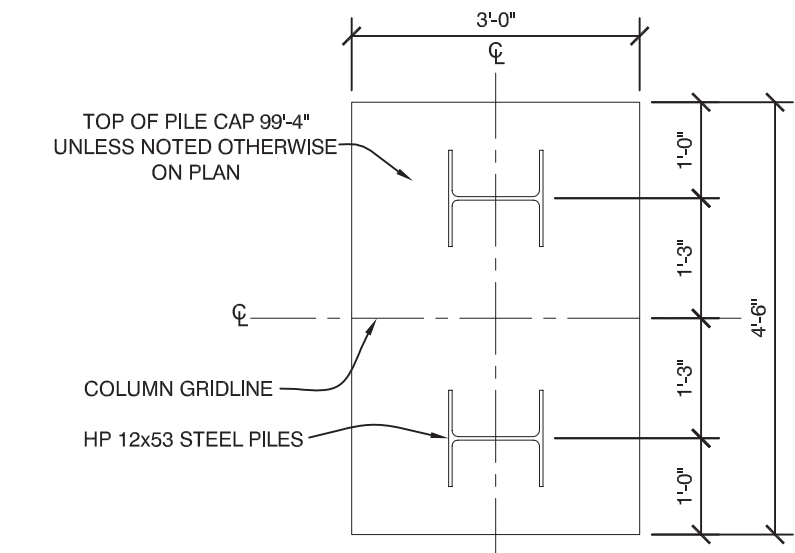
PILE CAP SCHEDULE			
TYPE	SIZE	REINFORCING	TOP
	WIDTHxLENGTHxDEPTH	BOTTOM	
F-3	3'-0"x4'-6"x3'-0"	#6 BARS @ 12" EACH WAY	#6 BARS @ 12" EACH WAY
F-3.5	3'-6"x3'-6"x1'-6"	#6 BARS @ 12" EACH WAY	#6 BARS @ 12" EACH WAY
F-4.5	4'-6"x4'-6"x3'-0"	#6 BARS @ 12" EACH WAY	#6 BARS @ 12" EACH WAY

NOTE: ALL REINFORCING MATS TO BE TIED AND CHAIRED 3" ABOVE SOIL.

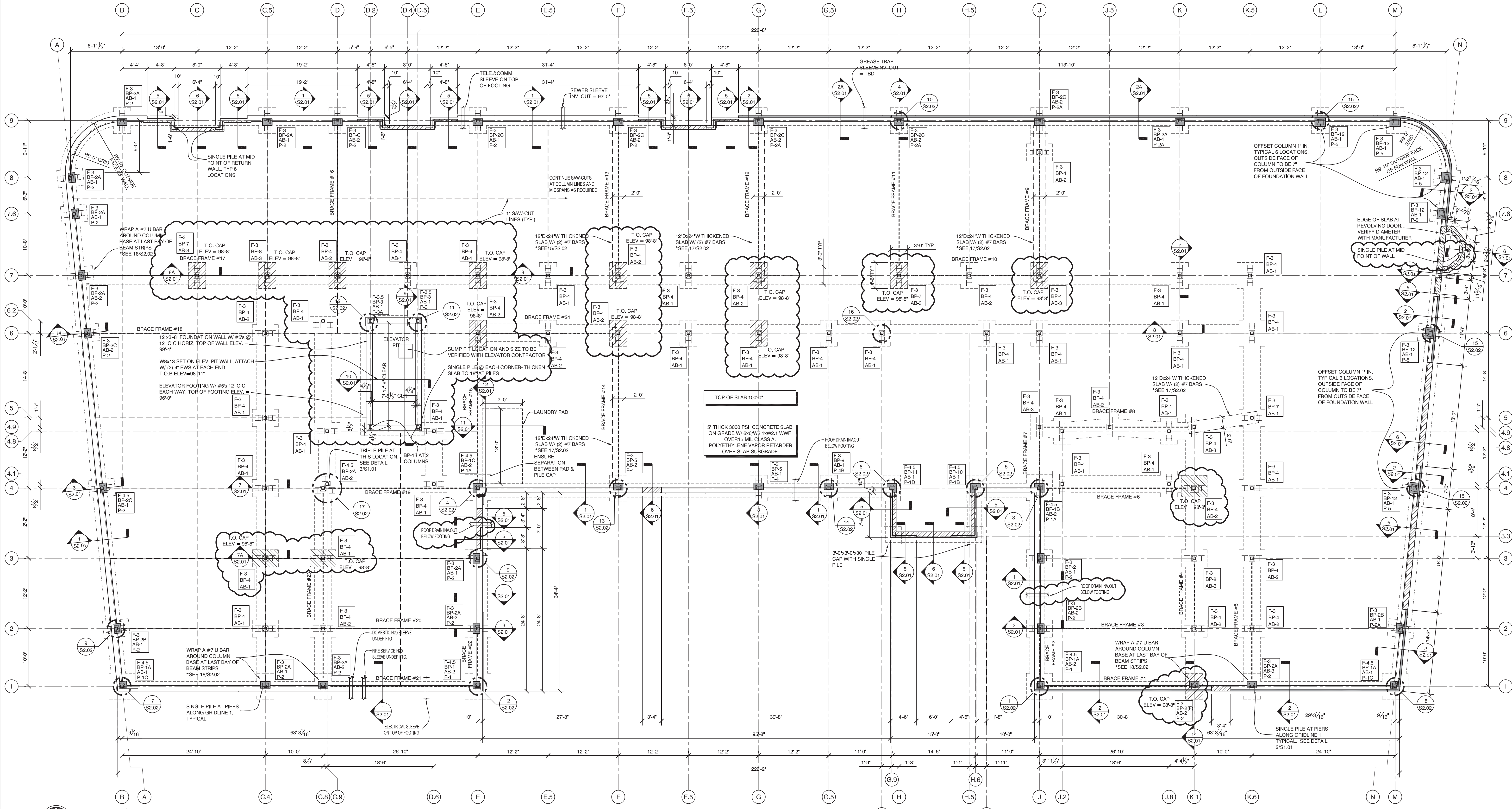
NOTE: ALL TYPICAL 3'-0" x 4'-6" x 3'-0" PILE CAPS TO HAVE (2) PILES PER DETAIL 1/S1.01 UNLESS NOTED OTHERWISE ON FOUNDATION PLAN



2 TYPICAL SINGLE PILE CAP
1/2" = 1'-0"



1 TYPICAL DOUBLE PILE CAP
1/2" = 1'-0"



PLAN NORTH 1 FOUNDATION PLAN
1/8" = 1'-0"

OPECHEE
CONSTRUCTION CORPORATION

STATE OF MAINE
JEFFREY S. NAWROCKI
No. 6044
LICENSED PROFESSIONAL ENGINEER
10/2/16

AC HOTELS by MARRIOTT
Fore Street / Hancock Street / Thames Street
Portland, Maine

REVISION:
09-02-16 USN MARKUPS
10-05-16 ELEVATOR & FRAMING REVISIONS

ISSUED:
08-12-16 FOUNDATION & STEEL PERMIT
project architect: KAK
drawn by: DLS

FOUNDATION PLAN

sheet number:
S1.01