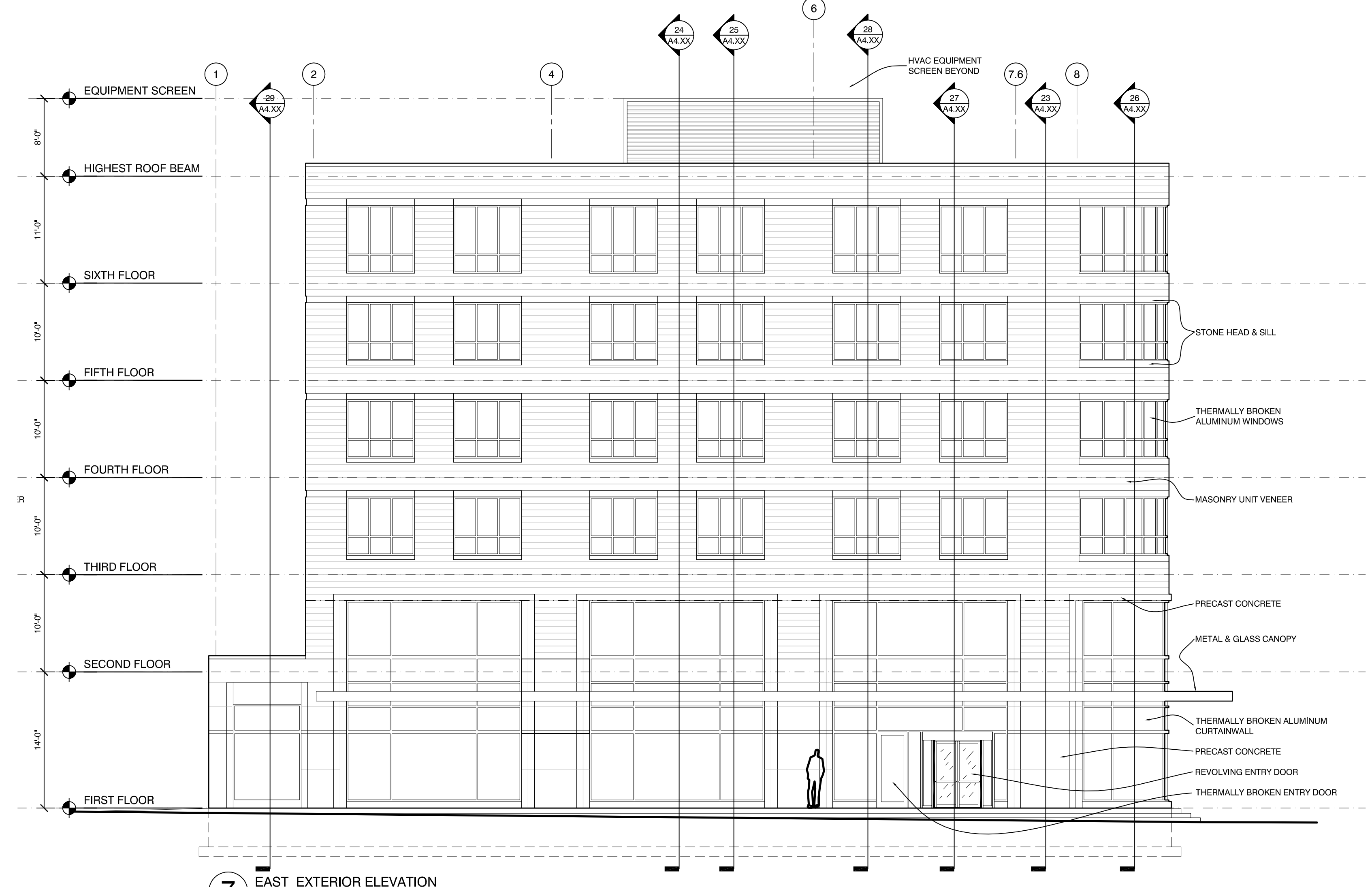
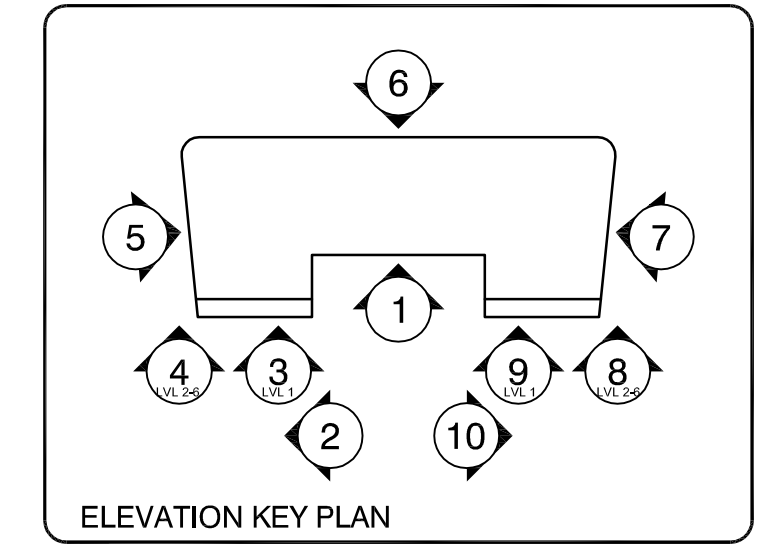


Friday, August 12, 2016 5:58:43 PM  
 Copyright 2015 Opechee Construction Corporation



**7 EAST EXTERIOR ELEVATION**  
1/8" = 1'-0"



**6 NORTH EXTERIOR ELEVATION**  
1/8" = 1'-0"

**OPECHEE**  
 CONSTRUCTION CORPORATION  
11 CORPORATE DRIVE • BELMONT • NH 03220  
 PHONE (603) 927-7000 • WWW.OPECHEE.COM

LICENSED ARCHITECT  
 08-15-16  
 KEITH A. KELLEY  
 No. 4212  
 STATE OF MAINE

**AC HOTELS by MARRIOTT**  
 Fore Street / Hancock Street / Thames Street  
 Portland, Maine

REVISION:

ISSUED: 08-12-16 FOUNDATION & STEEL PERMIT

project architect: KAK  
 drawn by: DLS

**EXTERIOR BUILDING ELEVATIONS**

sheet number:  
**A3.02**