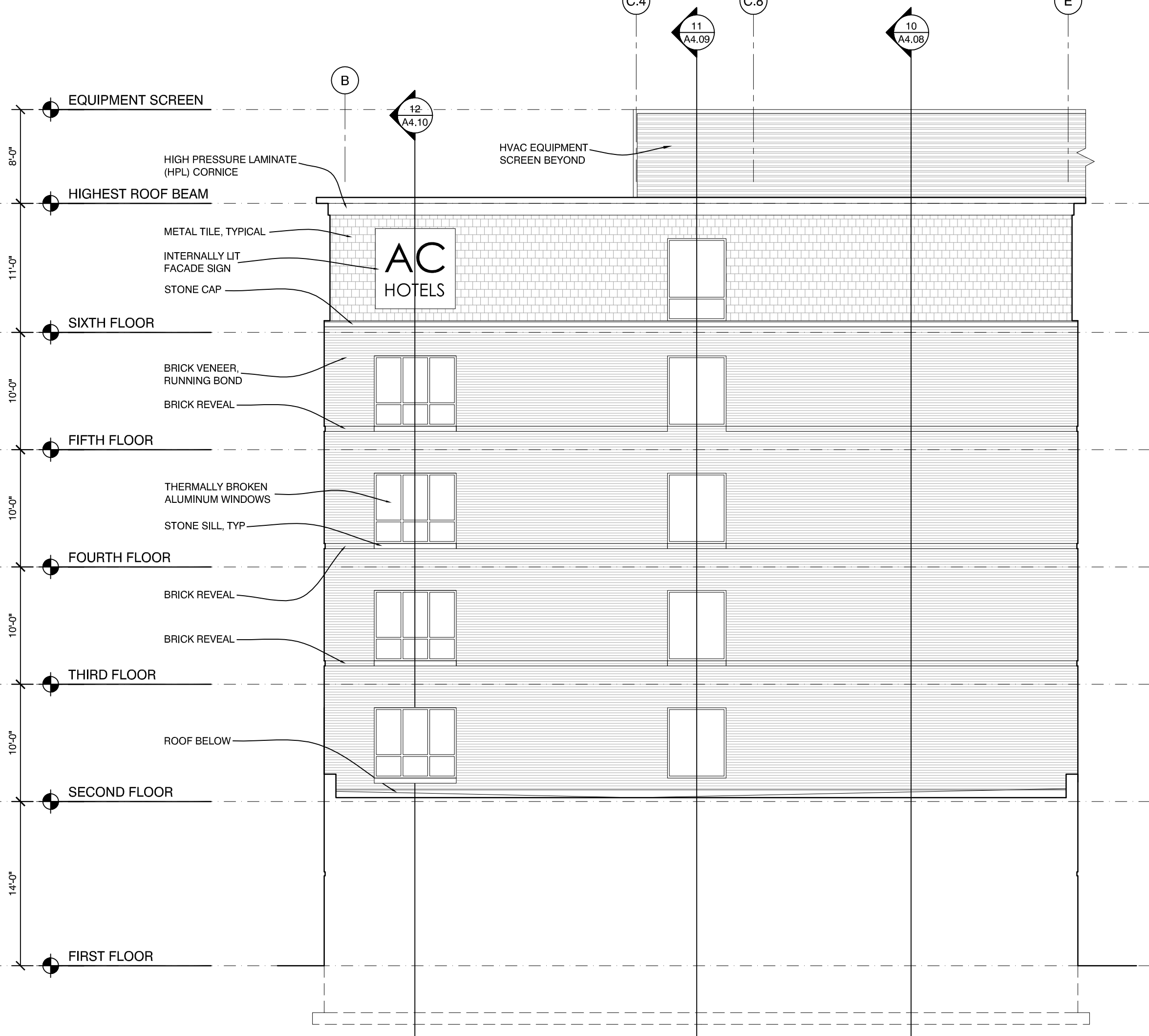


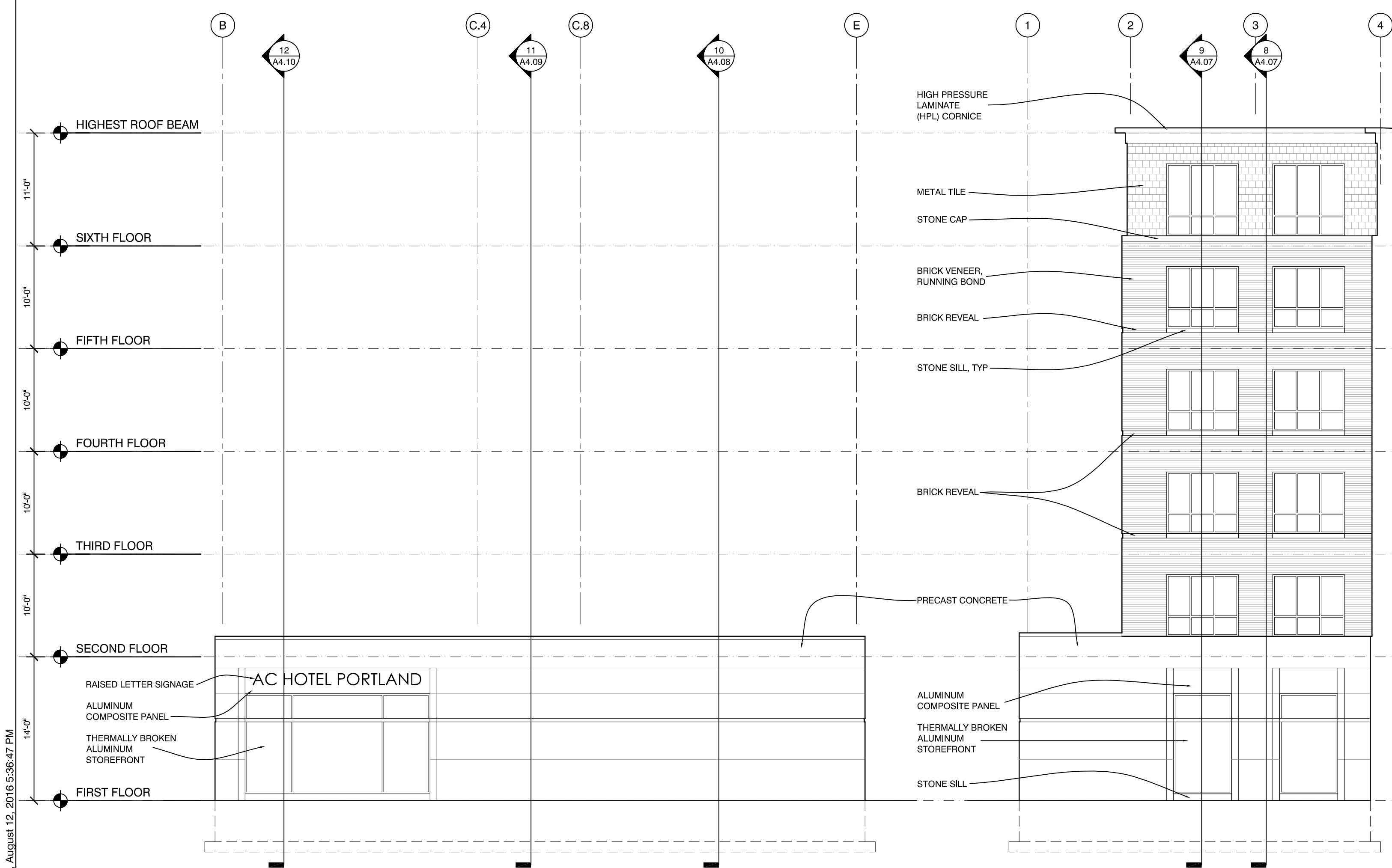
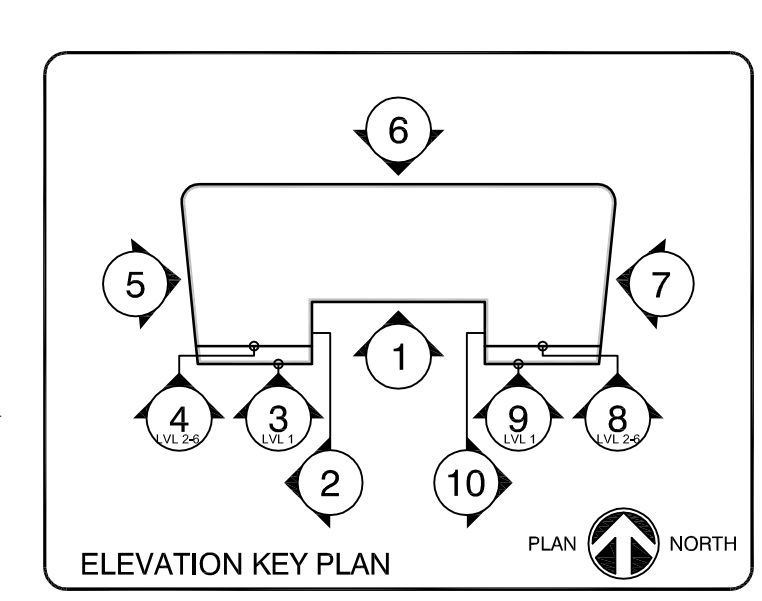
Friday, August 12, 2016 5:36:47 PM



5 WEST EXTERIOR ELEVATION
1/8" = 1'-0"



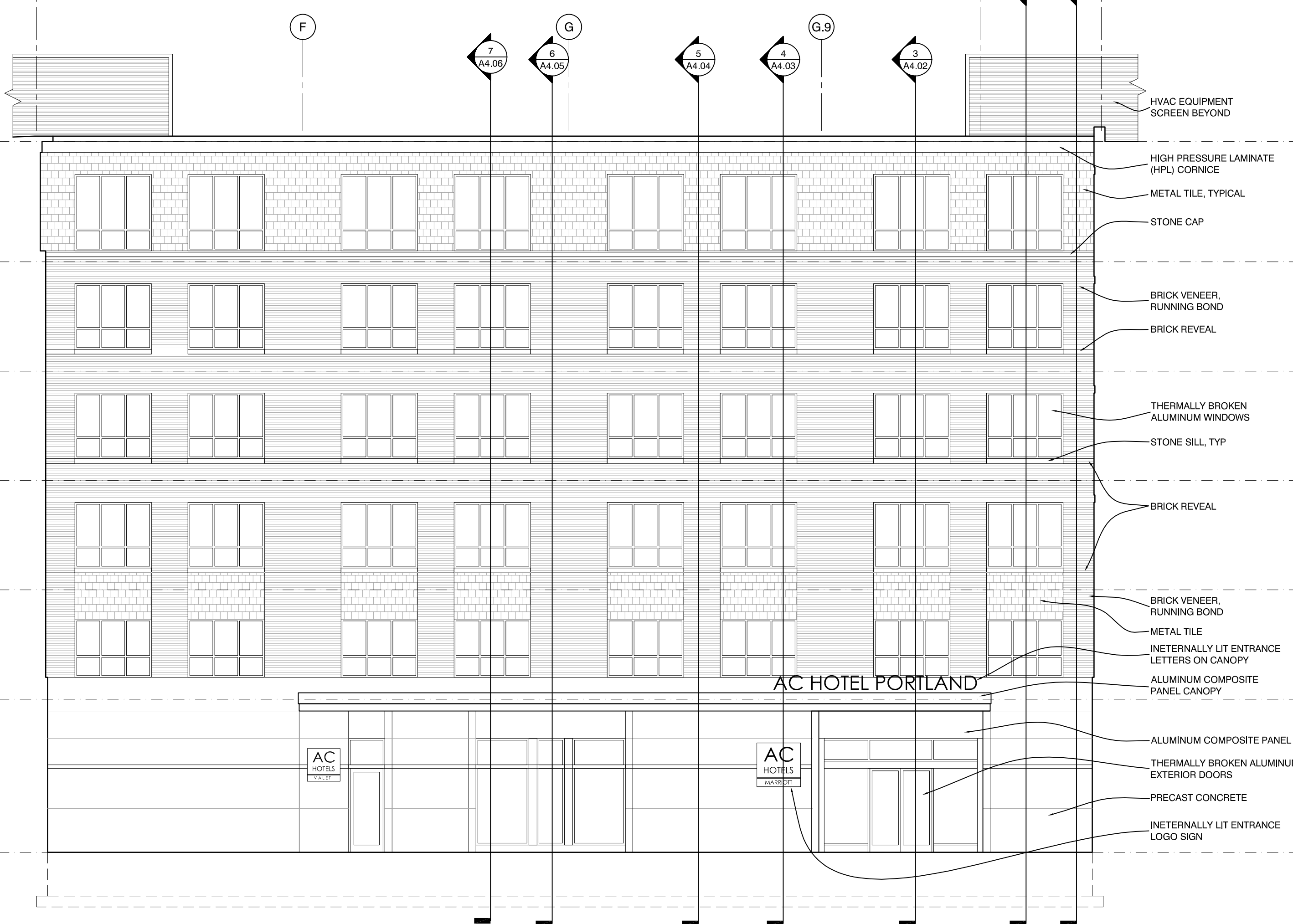
4 SOUTH LEVELS 2-6 EXTERIOR ELEVATION
1/8" = 1'-0"



3 SOUTH LEVEL 1 EXTERIOR ELEVATION
1/8" = 1'-0"

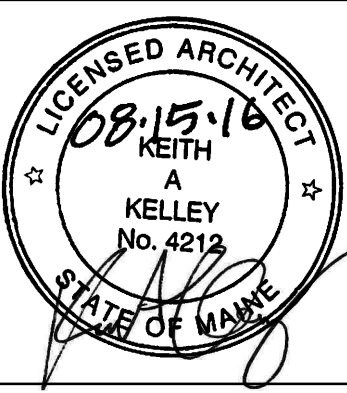


2 EAST INSIDE CORNER EXTERIOR ELEVATION
1/8" = 1'-0"



1 SOUTH EXTERIOR ELEVATION
1/8" = 1'-0"

OPECHEE
CONSTRUCTION CORPORATION
11 CORPORATE DRIVE • BELMONT • NH 03220
PHONE (603) 527-2000 • WWW.OPECHEE.COM



AC HOTELS by MARRIOTT
Fore Street / Hancock Street / Thames Street
Portland, Maine

REVISION:

ISSUED: 08-12-16 FOUNDATION & STEEL PERMIT

project architect: KAK
drawn by: DLS

EXTERIOR BUILDING ELEVATIONS

sheet number:

A3.01