



NORTH

OCEAN GATEWAY GARAGE LLC  
24419/1111  
37,626 S.F.

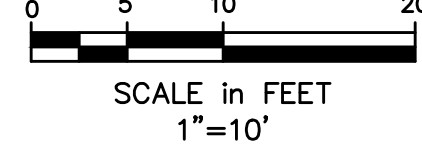
PARKING GARAGE  
BRICK 16

IG ENCASED CONCRETE  
BANK WITH (4) 6" CONDUITS  
VP DRAWING 905-3768

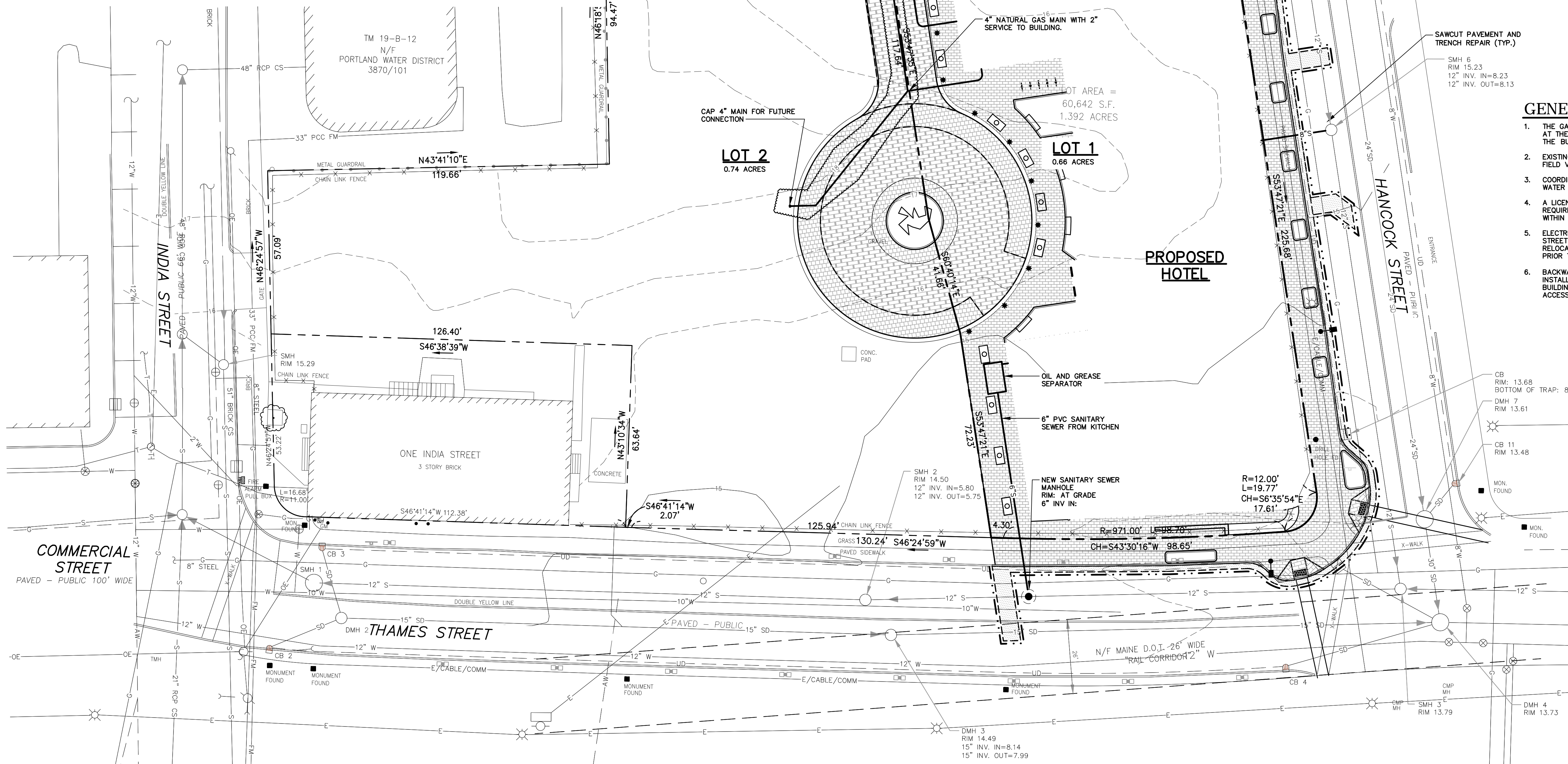
### NOTES

1. THE 6" FIRE LINE AND THE 4" DOMESTIC WATER LINE SHALL BE SEPARATED BY A MINIMUM OF 2 FEET FACE TO FACE.
2. THE SHUTOFF VALVES FOR THE 6" FIRE AND 4" DOMESTIC SHALL BE PLACED A MINIMUM OF 2' FROM THE FACE OF CURB ON FORE STREET.
3. THE 12" WATER MAIN IN FORE STREET IS SCHEDULED FOR RENEWAL IN 2017. SHOULD INSTALLATION OF SITE WATER CORRESPOND TO INSTALLATION OF RENEWED WATER MAIN, A 12" SWIVEL TEE SHALL BE INSTALLED IN PLACE OF THE 12"X6" TAPPING SLEEVE. CONTRACTOR TO COORDINATE WITH PORTLAND WATER DISTRICT.

### WATER CONNECTION DETAIL



SCALE IN FEET  
1"=10'

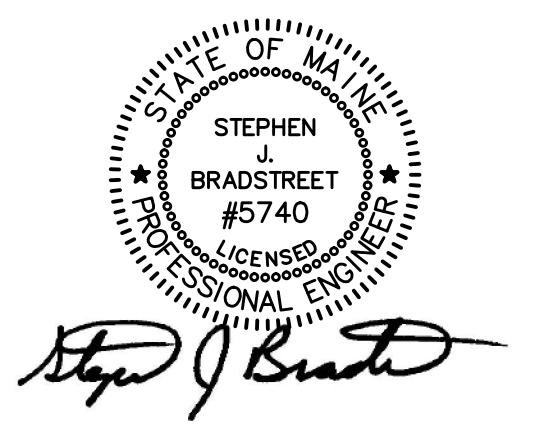


### GENERAL NOTES

1. THE GAS MAIN ALONG FORE STREET SHALL BE RELOCATED AT THE DIRECTION OF UNUTIL PRIOR TO EXCAVATION FOR THE BUILDING.
2. EXISTING UTILITIES SHOWN ARE APPROXIMATE AND SHALL BE FIELD VERIFIED.
3. COORDINATE INSTALLATION OF FIRE SERVICE AND DOMESTIC WATER SERVICE WITH PORTLAND WATER DISTRICT.
4. A LICENSE FROM THE CITY OF PORTLAND SHALL BE REQUIRED FOR ANY GREASE TRAP AND BACKWATER VALVES WITHIN THE CITY RIGHT-OF-WAY.
5. ELECTRICAL CONDUIT IDENTIFIED IN SIDEWALK ON HANCOCK STREET IS FOR EXISTING LIGHTING CIRCUIT AND WILL BE RELOCATED WITH FIXTURE REPLACEMENT. FIELD VERIFY PRIOR TO CONSTRUCTION. COORDINATE WITH CITY DPW.
6. BACKWATER VALVES (BACKFLOW PREVENTER) SHALL BE INSTALLED ON EACH SANITARY LINE AS IT EXITS THE BUILDING. EACH VALVE SHALL BE PLACED WITHIN AN ACCESS BOX SUPPLIED BY MANUFACTURER.

Site:  
**PROPOSED AC HOTEL  
PORTLAND**  
FORE STREET /  
HANCOCK STREET /  
THAMES STREET  
PORTLAND, MAINE

Prepared for:  
**PORTLAND NORWICH GROUP, LLC.**  
2330 PALM RIDGE ROAD #305  
SANIBEL, FLORIDA 33957



CIVIL ENGINEER:  
**STEPHEN J. BRADSTREET, PE #5740**  
400 COMMERCIAL STREET, SUITE 404  
PORTLAND, ME 04101  
207-772-2891

**RANSOM**  
Consulting  
Engineers  
and Scientists

400 Commercial Street, Suite 404  
Portland, ME 04101  
Tel. (207) 772-2891  
Fax (207) 772-3248  
www.ransomenv.com

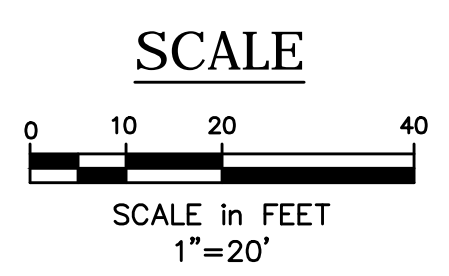
### UTILITY PLAN

G	CITY REVS/CONSTRUCTION	06/30/17
F	PWD COMMENTS	04/24/17
E	APPROVED CITY PLAN	02/15/17
D	RESPONSE TO COMMENTS	05/10/16
C	FINAL SUBMISSION	03/15/16
B	PRELIMINARY SUBMISSION	09/29/15
A	CLIENT REVIEW	09/15/15
No.	Revision/Issue	Date

Design by:	MPM	Checked by:	SJB
Drawn by:	JAR	Approved by:	SJB

Project:	150.06094	Date:	AUGUST 2015
----------	-----------	-------	-------------

Sheet No:  
**C1.1**  
Sheet 5 of 17



### SCALE

SCALE IN FEET  
1"=20'