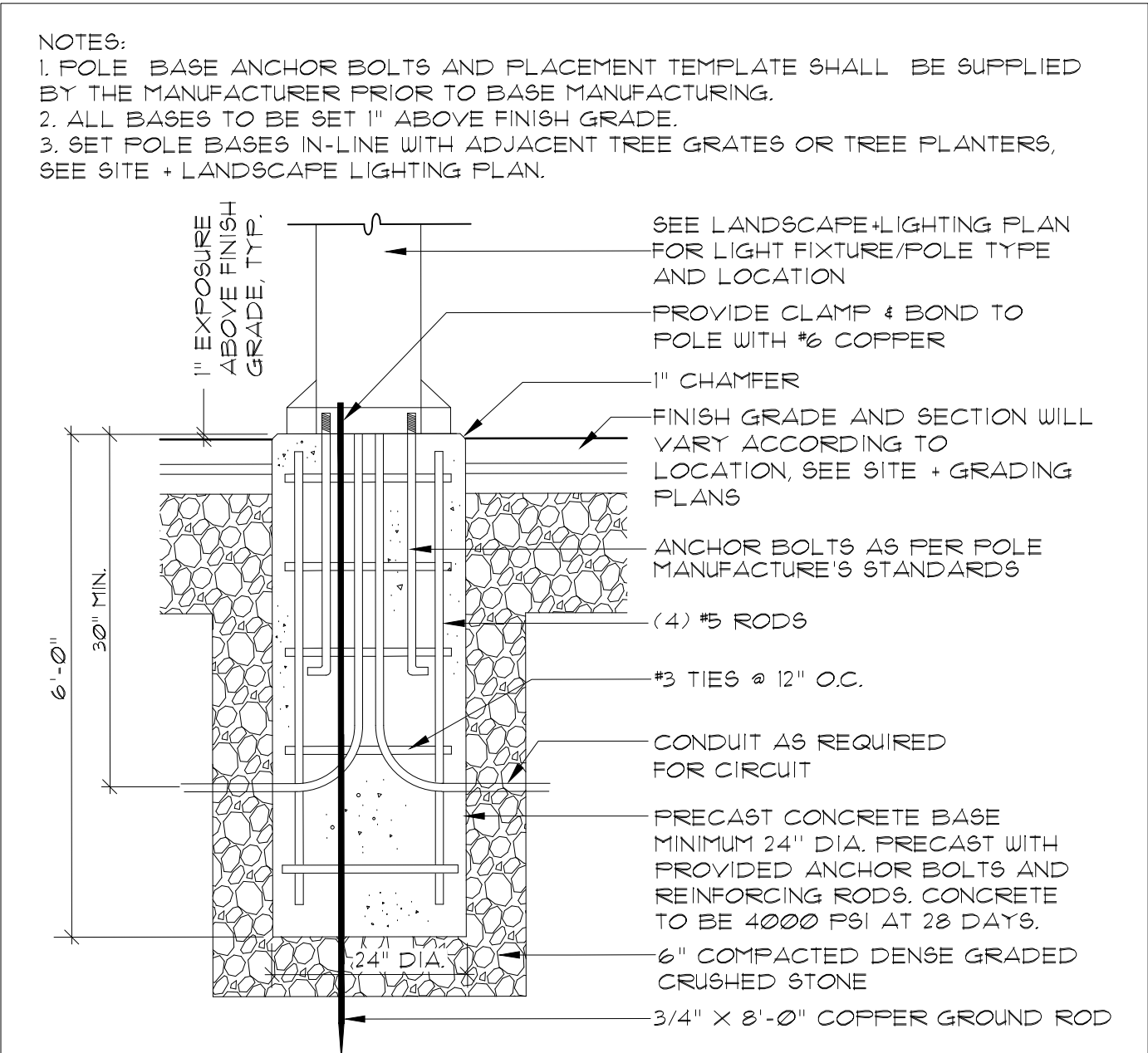


LIGHT BOLLARDS AROUND CUL-DE-SAC
 LOCATE FOOTING TIGHT TO BACK OF CURB, FILL SURFACE GAP WITH BRICK PAVER, CENTER BETWEEN TREE GRATES OR EQUAL SPACING AS SHOWN, TYP.

LIGHT BOLLARDS ALONG ENTRY DRIVE CENTERED
 BETWEEN AND INLINE WITH CENTER OF TREE GRATES

- NOTES:
1. SHOP DRAWINGS REQUIRED.
 2. TOP OF CONC. FOOTING TO BE SET FLUSH WITH BOTTOM OF BRICK PAVERS.
 3. LIGHT BOLLARD TO BE FORM'S-SURFACE LED LIGHT COLUMN BOLLARD, SERIES 600 IN STAINLESS STEEL W/ SATIN FINISH AND WHITE FROSTED ACRYLIC LENS NO SHIELD, MODEL LBLCO-604 W/ 3000W WARM WHITE LED.
 4. LIGHT BOLLARD TO BE SURFACE MOUNTED W/ J-BOLTS PER MANUFACTURER'S INSTRUCTIONS.

1 LIGHT BOLLARD + BASE

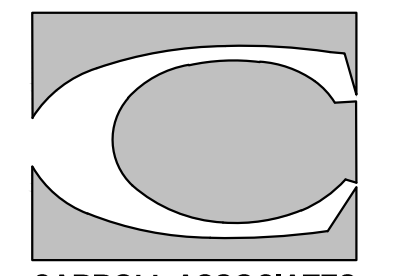


2 LIGHT POLE BASE

- NOTES:
1. POLE BASE ANCHOR BOLTS AND PLACEMENT TEMPLATE SHALL BE SUPPLIED BY THE MANUFACTURER PRIOR TO BASE MANUFACTURING.
 2. ALL BASES TO BE SET 1" ABOVE FINISH GRADE.
 3. SET POLE BASES IN-LINE WITH ADJACENT TREE GRATES OR TREE PLANTERS, SEE SITE + LANDSCAPE LIGHTING PLAN.

Site:
PROPOSED AC HOTEL PORTLAND
 FORE STREET / HANCOCK STREET / THAMES STREET
 PORTLAND, MAINE

Prepared for:
PORTLAND NORWICH GROUP, LLC
 2330 PALM RIDGE ROAD #305
 SANIBEL, FL 33957



CARROLL ASSOCIATES
 LANDSCAPE ARCHITECTS
 217 COMMERCIAL STREET, STE 200
 PORTLAND, MAINE 04101
 207.772.1552



RANSOM
 Consulting Engineers and Scientists
 400 Commercial Street, Suite 404
 Portland, ME 04101
 Tel. (207) 772-2891
 Fax (207) 772-3248
 www.ransomenv.com

LANDSCAPE DETAILS

No.	Revision/Issue	Date
D	CITY REVS / FOR CONSTRUCTION	6/30/17
C	STAFF REVIEW COMMENTS	05/10/16
B	FINAL SITE PLAN REVIEW	03/15/16
A	PRELIMINARY REVIEW	09/29/15

Design by:	MAP/PC	Checked by:	PC
Drawn by:	MAP	Approved by:	PC
Project:	150.06094	Date:	FEBRUARY 2016

Sheet No:
L2.2
 17 of 20