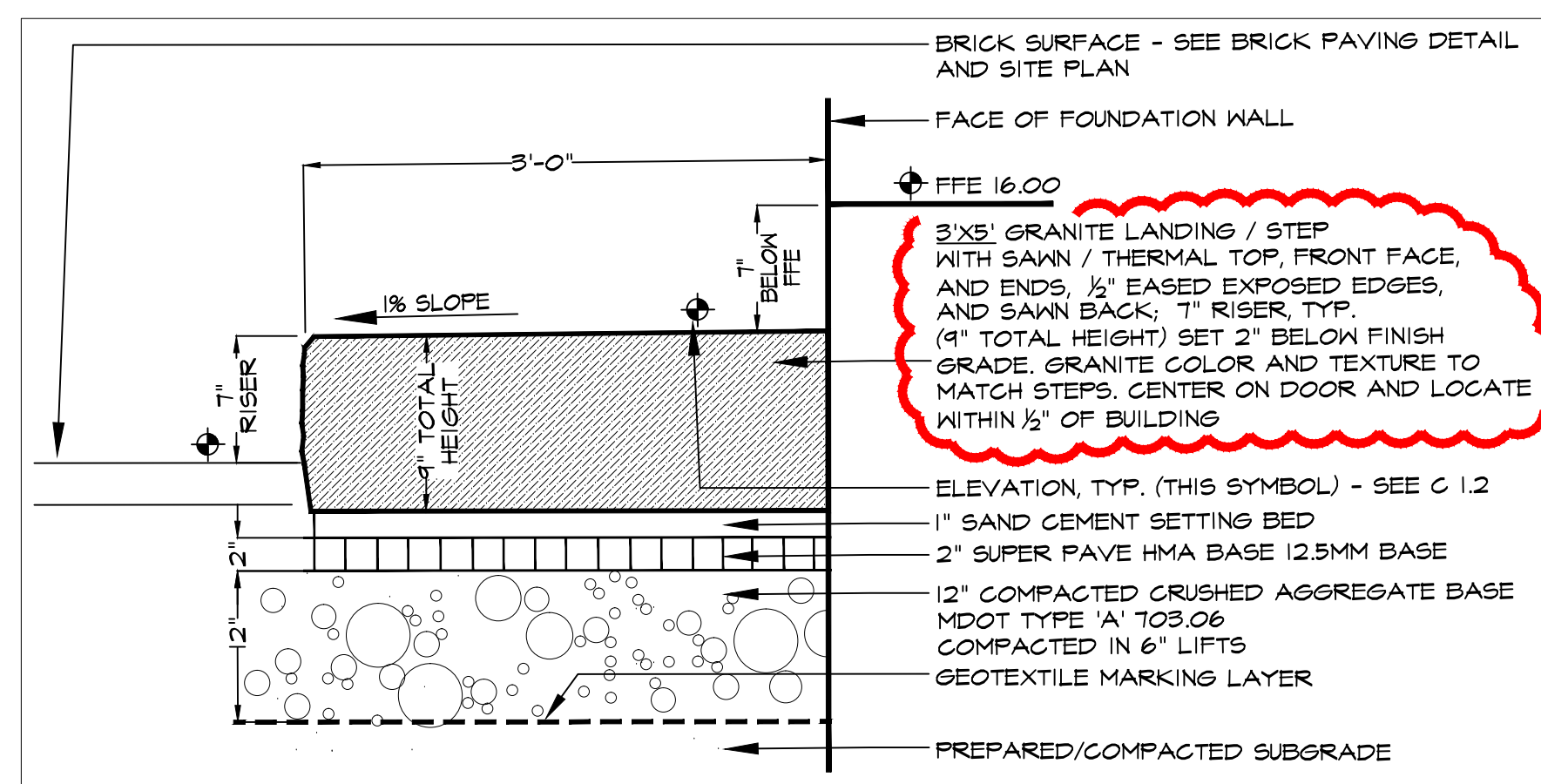
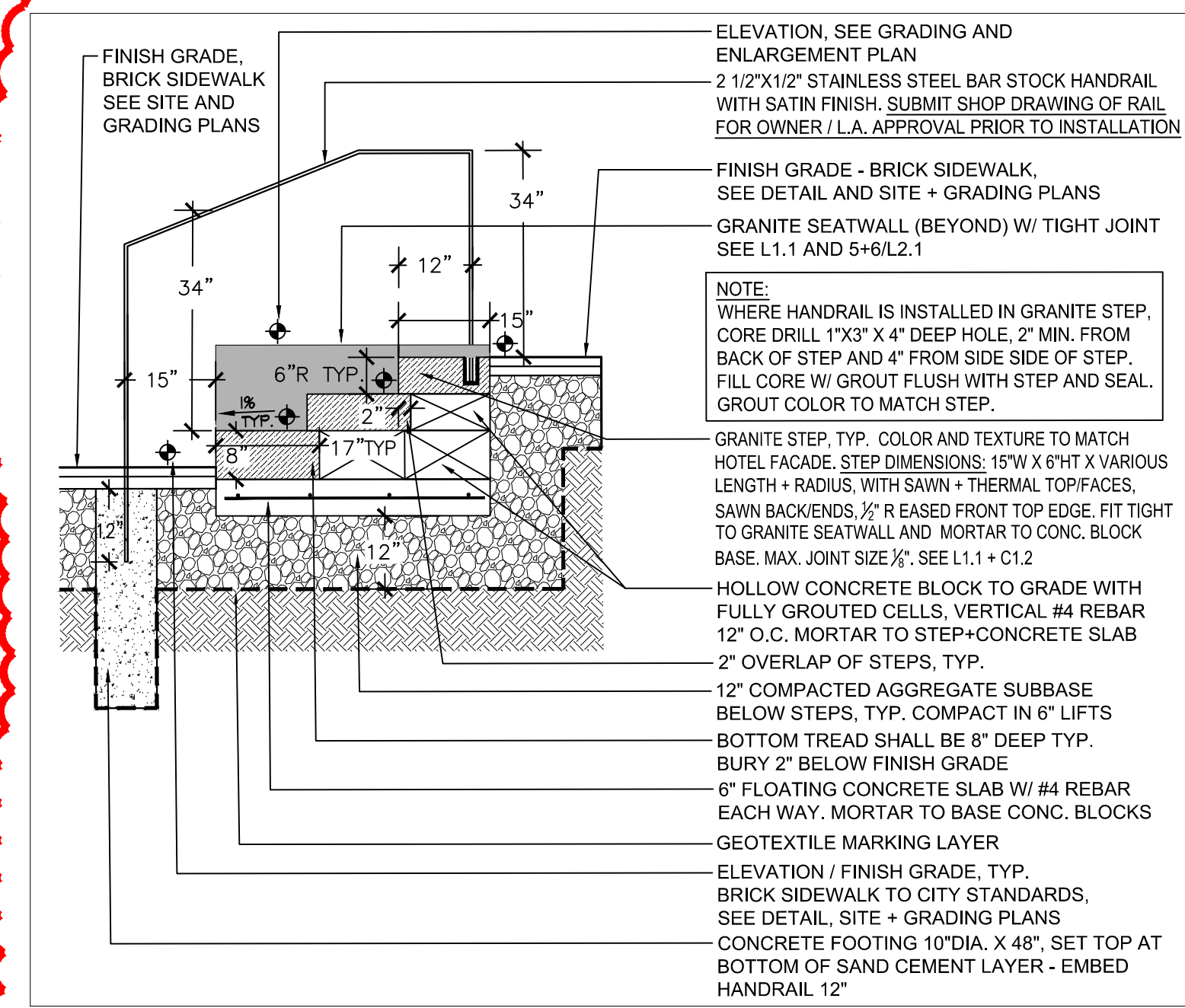


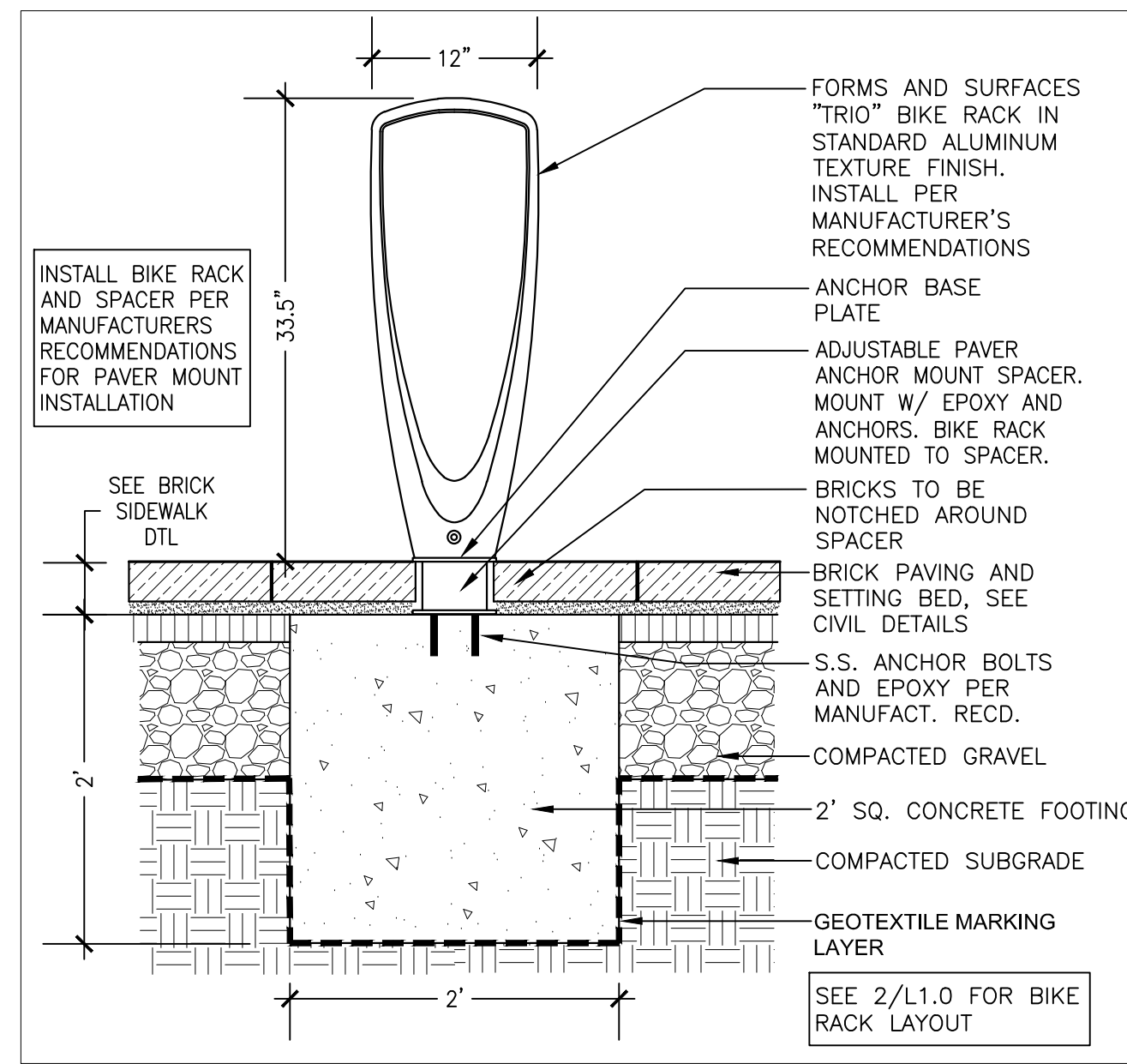
1 GRANITE BENCH



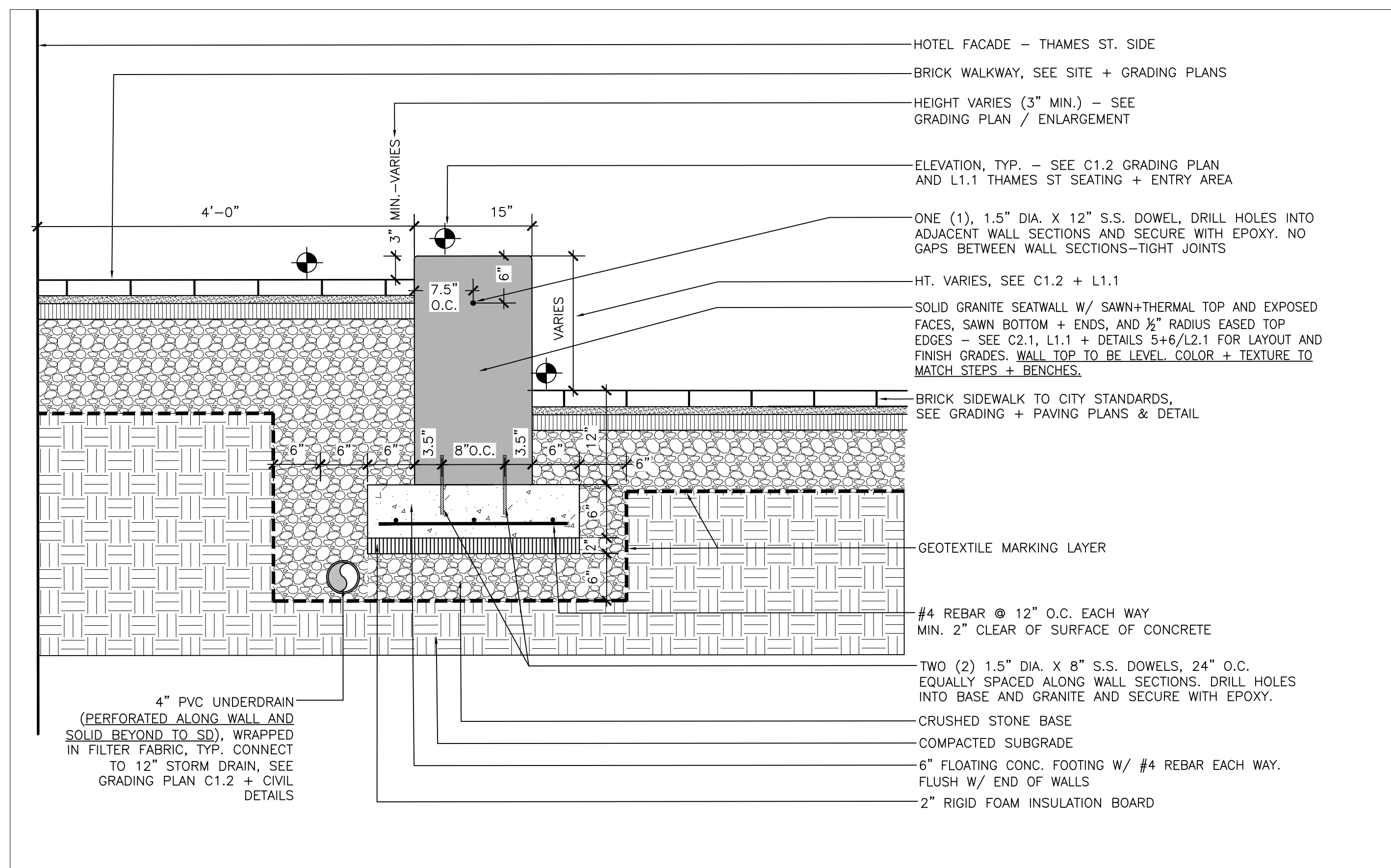
2 GRANITE LANDING / STEP



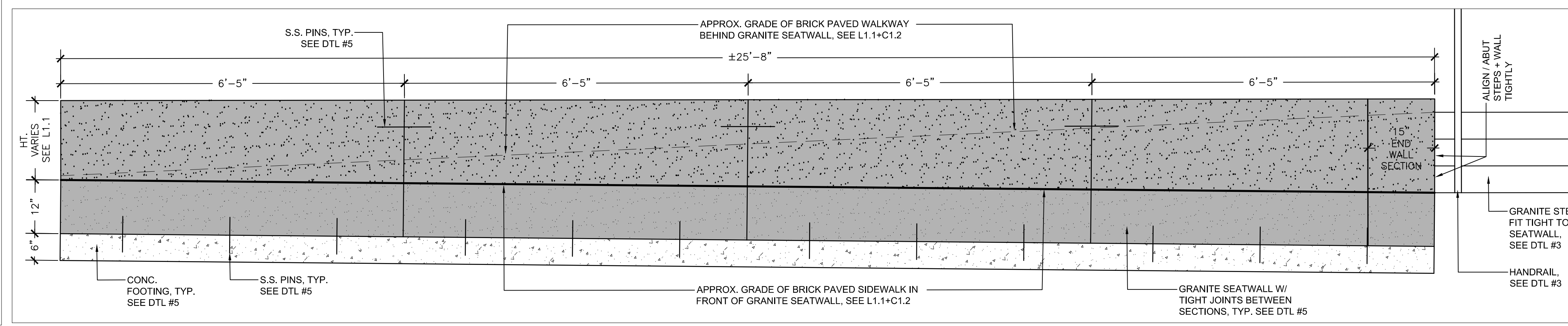
3 GRANITE STEPS & HANDRAILING



4 BIKE RACK



5 GRANITE SEATWALL



6 GRANITE SEATWALL : ELEVATION FROM THAMES STREET

Site:  
**PROPOSED AC HOTEL PORTLAND**  
 FORE STREET / HANCOCK STREET / THAMES STREET PORTLAND, MAINE  
 Prepared for:  
**PORTLAND NORWICH GROUP, LLC**  
 2330 PALM RIDGE ROAD #305  
 SANIBEL, FL 33957

**CARROLL ASSOCIATES**  
 LANDSCAPE ARCHITECTS  
 217 COMMERCIAL STREET, STE 200  
 PORTLAND, MAINE 04101  
 207.772.1552

**RANSOM Consulting Engineers and Scientists**  
 400 Commercial Street, Suite 404  
 Portland, ME 04101  
 Tel. (207) 772-2891  
 Fax (207) 772-3248  
 www.ransomenv.com

**LANDSCAPE DETAILS**

No.	Revision/Issue	Date
D	CITY REVS / FOR CONSTRUCTION	6/30/17
C	STAFF REVIEW COMMENTS	05/10/16
B	FINAL SITE PLAN REVIEW	03/15/16
A	PRELIMINARY REVIEW	09/29/15

Design by:	MAP/PC	Checked by:	PC
Drawn by:	MAP	Approved by:	PC
Project:	150.06094	Date:	FEBRUARY 2016
Sheet No:	<b>L2.1</b>		
	Sheet 16 of 20		