



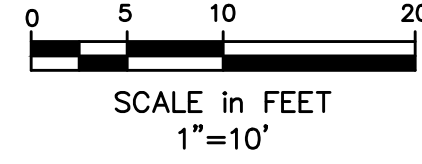
OCEAN GATEWAY GARAGE LLC
24419/111
37,626 S.F.

12"x6" TAPPING SLEEVE WITH 6" GATE VALVE. (SEE NOTE 3)
6" GATE VALVE
4" GATE VALVE

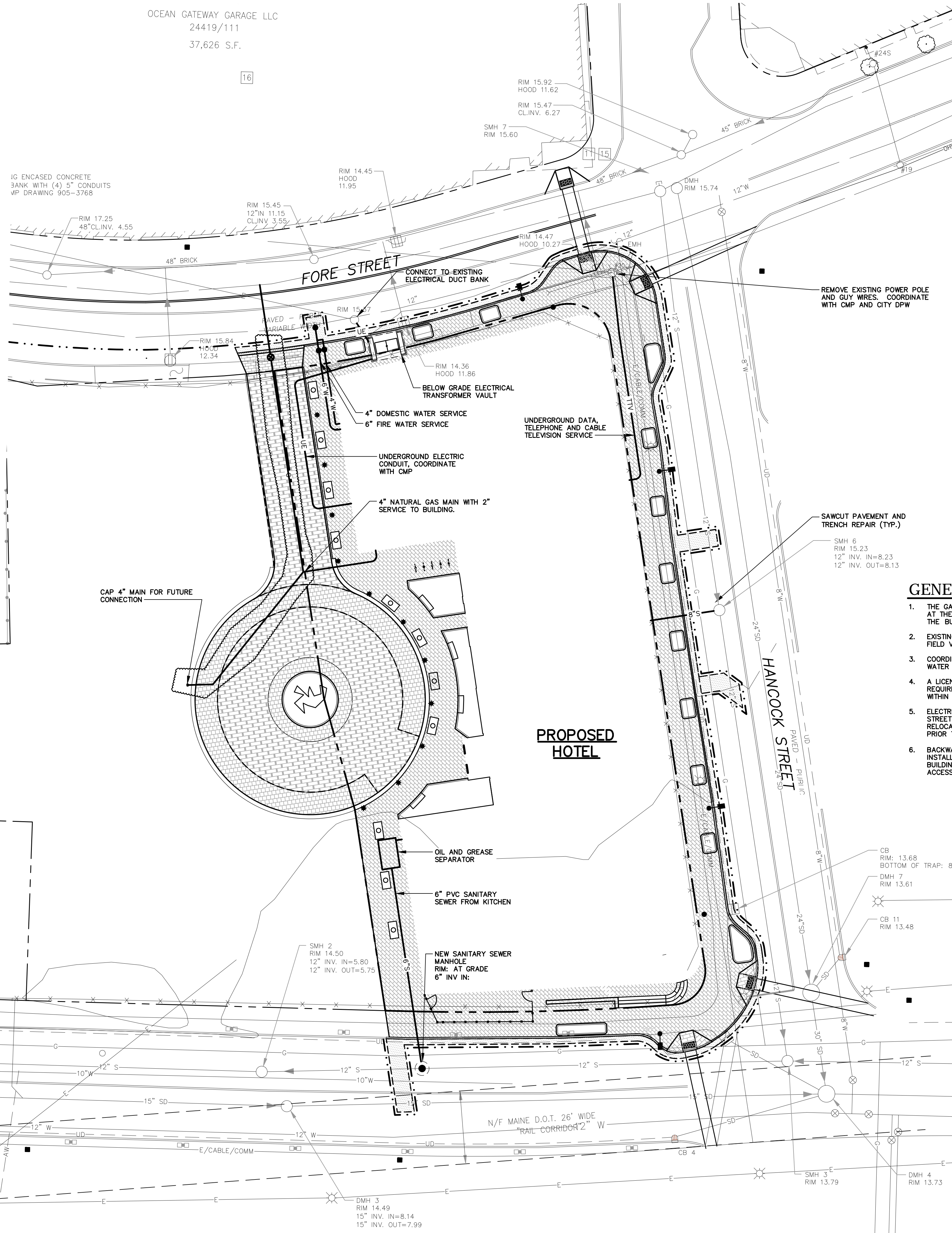
NOTES

1. THE 6" FIRE LINE AND THE 4" DOMESTIC WATER LINE SHALL BE SEPARATED BY A MINIMUM OF 2 FEET FACE TO FACE.
2. THE SHUTOFF VALVES FOR THE 6" FIRE AND 4" DOMESTIC SHALL BE PLACED A MINIMUM OF 2' FROM THE FACE OF CURB ON FORE STREET.
3. THE 12" WATER MAIN IN FORE STREET IS SCHEDULED FOR RENEWAL IN 2017. SHOULD INSTALLATION OF SITE WATER CORRESPOND TO INSTALLATION OF RENEWED WATER MAIN, A 12" SWIVEL TEE SHALL BE INSTALLED IN PLACE OF THE 12"x6" TAPPING SLEEVE. CONTRACTOR TO COORDINATE WITH PORTLAND WATER DISTRICT.

WATER CONNECTION DETAIL



IG ENCASED CONCRETE BANK WITH (4) 6" CONDUITS VP DRAWING 905-3768

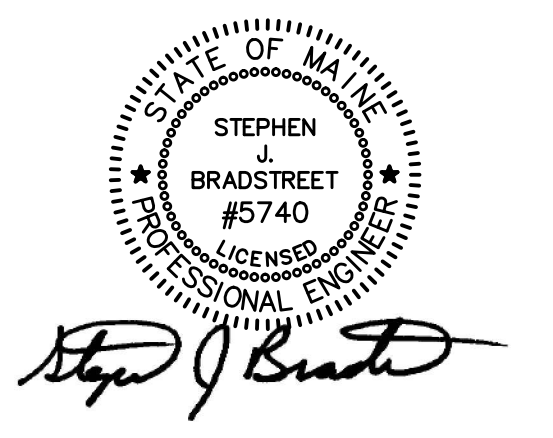


GENERAL NOTES

1. THE GAS MAIN ALONG FORE STREET SHALL BE RELOCATED AT THE DIRECTION OF UNUTIL PRIOR TO EXCAVATION FOR THE BUILDING.
2. EXISTING UTILITIES SHOWN ARE APPROXIMATE AND SHALL BE FIELD VERIFIED.
3. COORDINATE INSTALLATION OF FIRE SERVICE AND DOMESTIC WATER SERVICE WITH PORTLAND WATER DISTRICT.
4. A LICENSE FROM THE CITY OF PORTLAND SHALL BE REQUIRED FOR ANY GREASE TRAP AND BACKWATER VALVES WITHIN THE CITY RIGHT-OF-WAY.
5. ELECTRICAL CONDUIT IDENTIFIED IN SIDEWALK ON HANCOCK STREET IS FOR EXISTING LIGHTING CIRCUIT AND WILL BE RELOCATED WITH FIXTURE REPLACEMENT. FIELD VERIFY PRIOR TO CONSTRUCTION. COORDINATE WITH CITY DPW.
6. BACKWATER VALVES (BACKFLOW PREVENTER) SHALL BE INSTALLED ON EACH SANITARY LINE AS IT EXITS THE BUILDING. EACH VALVE SHALL BE PLACED WITHIN AN ACCESS BOX SUPPLIED BY MANUFACTURER.

Site:
**PROPOSED AC HOTEL
PORTLAND**
FORE STREET /
HANCOCK STREET /
THAMES STREET
PORTLAND, MAINE

Prepared for:
PORTLAND NORWICH GROUP, LLC.
2330 PALM RIDGE ROAD #305
SANIBEL, FLORIDA 33957



CIVIL ENGINEER:
STEPHEN J. BRADSTREET, PE #5740
400 COMMERCIAL STREET, SUITE 404
PORTLAND, ME 04101
207-772-2891

RANSOM
Consulting
Engineers
and Scientists
400 Commercial Street, Suite 404
Portland, ME 04101
Tel. (207) 772-2891
Fax (207) 772-3248
www.ransomenv.com

UTILITY PLAN

G	CITY REVS/CONSTRUCTION	06/30/17
F	PWD COMMENTS	04/24/17
E	APPROVED CITY PLAN	02/15/17
D	RESPONSE TO COMMENTS	05/10/16
C	FINAL SUBMISSION	03/15/16
B	PRELIMINARY SUBMISSION	09/29/15
A	CLIENT REVIEW	09/15/15

No.	Revision/Issue	Date
Design by:	MPM	Checked by: SJB
Drawn by:	JAR	Approved by: SJB
Project:	150.06094	Date: AUGUST 2015
Sheet No:	C1.1	
	Sheet 5 of 17	

