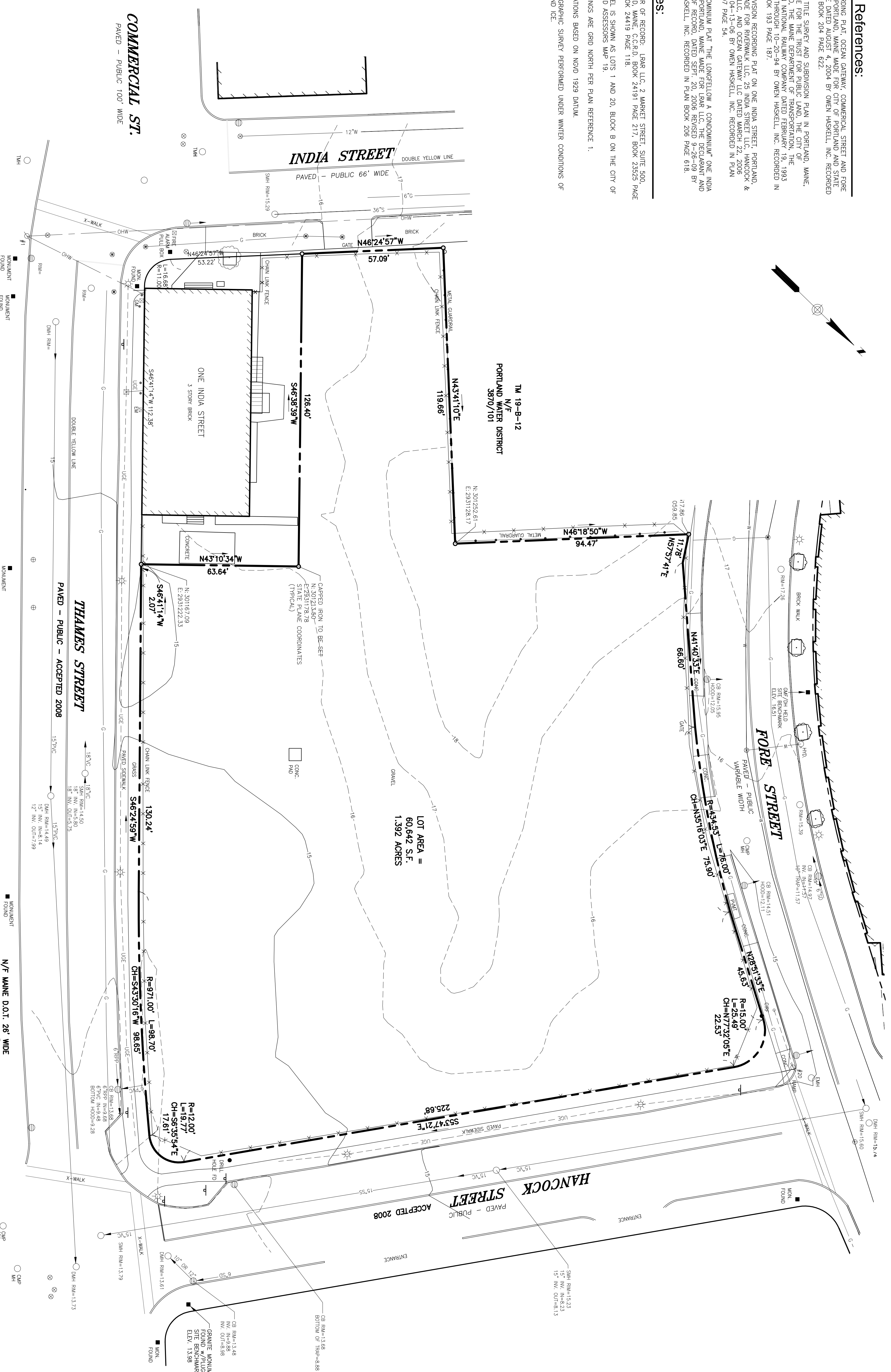
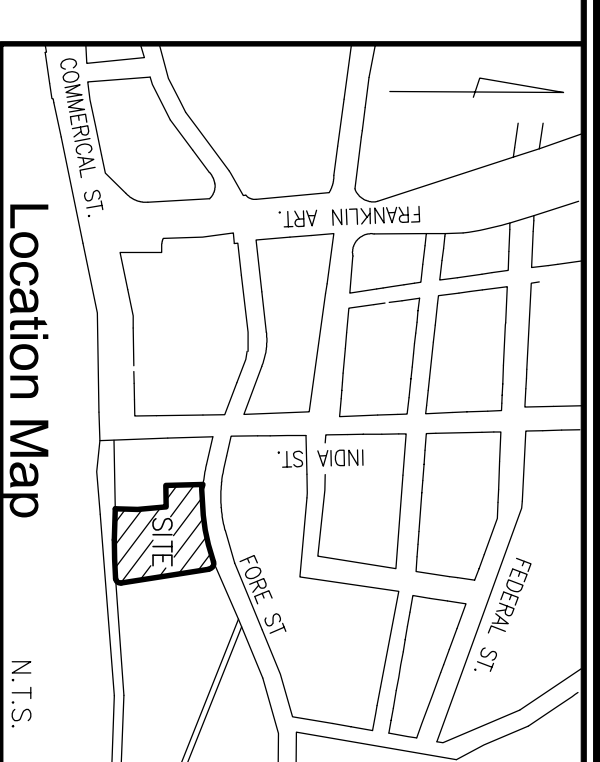


**Plan References:**

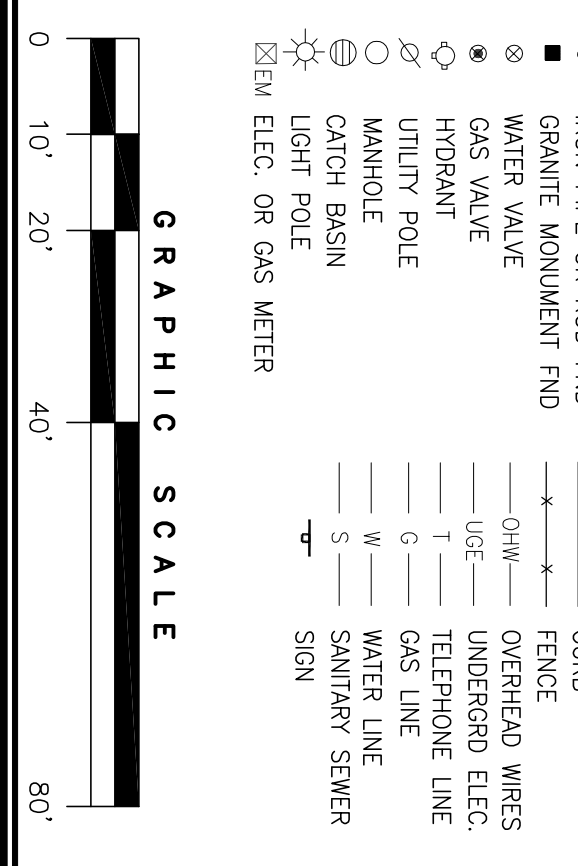
1. RECORDING PLAT OCEAN GATEWAY, COMMERCIAL STREET AND FORE STREET, PORTLAND, MAINE MADE FOR CITY OF PORTLAND AND STATE OF MAINE DATED AUGUST 4, 2004 BY OWEN HASKELL, INC. RECORDED IN PLAN BOOK 204 PAGE 622.
2. LAND TITLE SURVEY AND SUBDIVISION PLAN IN PORTLAND, MAINE, USA MADE FOR THE TRUST FOR PUBLIC LAND, THE CITY OF PORTLAND, THE MAINE DEPARTMENT OF TRANSPORTATION, THE PORTLAND WATER DISTRICT AND THE PORTLAND ASSASSORS MAP 1993 REVISED THROUGH 10-20-94 BY OWEN HASKELL, INC. RECORDED IN PLAN BOOK 193 PAGE 187.
3. SUBDIVISION RECORDING PLAT ON ONE INDIA STREET, PORTLAND AND FORE STREET, PORTLAND, MAINE MADE FOR LHM, LLC, THE DECEDENT AND MIDDLE, LLC, AND OCEAN GATEWAY, LLC DATED MARCH 22, 2006 REVISED 04-13-08 BY OWEN HASKELL, INC. RECORDED IN PLAN BOOK 207 PAGE 54.
4. CONDOMINIUM PLAT "THE LONGFELLOW 4 CONDOMINIUM" ONE INDIA STREET, PORTLAND, MAINE MADE FOR LHM, LLC, THE DECEDENT AND MIDDLE, LLC, AND OCEAN GATEWAY, LLC DATED MARCH 22, 2006 REVISED 04-13-08 BY OWEN HASKELL, INC. RECORDED IN PLAN BOOK 207 PAGE 54.

**Notes:**

1. OWNER OF RECORD: LHM, LLC, 2 MARKET STREET, SUITE 500, PORTLAND, MAINE 04101, BOOK 24191 PAGE 217, BOOK 23223 PAGE 169, BOOK 24419 PAGE 118.
2. PARCEL IS SHOWN AS LOTS 1 AND 20, BLOCK B ON THE CITY OF PORTLAND ASSESSORS MAP 19.
3. BEARINGS ARE GRID NORTH PER PLAN REFERENCE 1.
4. ELEVATIONS BASED ON NGVD 1929 DATUM.
5. TOPOGRAPHIC SURVEY PERFORMED UNDER WINTER CONDITIONS OF SNOW AND ICE.



- Legend:**
- IRON PIPE OR ROD FND
  - GRANITE MONUMENT FND
  - WATER VALVE
  - GAS VALVE
  - HYDRANT
  - UTILITY POLE
  - MANHOLE
  - CATCH BASIN
  - LIGHT POLE
  - BEM ELEC. OR GAS METER
  - CURB
  - FENCE
  - OVERHEAD WIRES
  - UNDERGND ELEC.
  - TELEPHONE LINE
  - GAS LINE
  - WATER LINE
  - SANITARY SEWER
  - SIGN



LOT AREA =  
60,642 S.F.  
1.392 ACRES

**Utility Note:**

THE UNDERGROUND UTILITIES SHOWN HAVE BEEN LOCATED FROM FIELD SURVEY. THE SURVEYOR DOES NOT WARRANT THE ACCURACY OF THESE UTILITIES. ALL SUCH UTILITIES IN THE AREA, EITHER IN SERVICE OR ABANDONED, THE SURVEYOR FURTHER DOES NOT WARRANT THAT THE UNDERGROUND UTILITIES SHOWN ARE IN THE EXACT LOCATION INDICATED ALTHOUGH HE DOES CERTIFY THAT THEY ARE LOCATED AS ACCURATELY AS POSSIBLE FROM INFORMATION AVAILABLE. THE SURVEYOR HAS NOT PERSONALLY VISITED THE SITE TO VERIFY THE LOCATION OF ANY UTILITIES. THE SURVEYOR ASSUMES NO LIABILITY FOR DAMAGE TO OR OSHA VIOLATIONS DUE TO ANY CONSTRUCTION.

**Certification:**

OWEN HASKELL, INC. CERTIFIES THAT THIS PLAN IS BASED ON, AND THE RESULT OF, AN ORIGINAL SURVEY AND THAT THE SURVEYOR'S CURRENT STANDARDS OF PRACTICE, WITH THE EXCEPTION OF MARKERS NOT SET AT ALL CORNERS.

C.C.R.D. 21887/054 STATE TO CITY 10/01/2004  
C.C.R.D. 21887/343 CITY TO STATE 9/19/2004

REV. 1 07/20/16 UPDATED PER CITY REVIEW COMMENTS

**BOUNDARY & TOPOGRAPHIC SURVEY**  
AT  
FORE STREET & INDIA STREET  
PORTLAND, MAINE  
MADE FOR  
**PORTLAND NORWICH GROUP, LLC**

**OWEN HASKELL, INC.**  
390 U.S. ROUTE ONE, PALMOUTH, ME 04105 (207) 774-0424  
PROFESSIONAL LAND SURVEYORS

Drawn By	RS	Date	Job No.
Trace By	JLW	APRIL 3, 2015	2015-0211P
Check By	JWS	Scale	Dwg. No.
Book No.	1099	1" = 20'	1

DATE \_\_\_\_\_ JOHN W. SWAN, PLS. NO. 1038