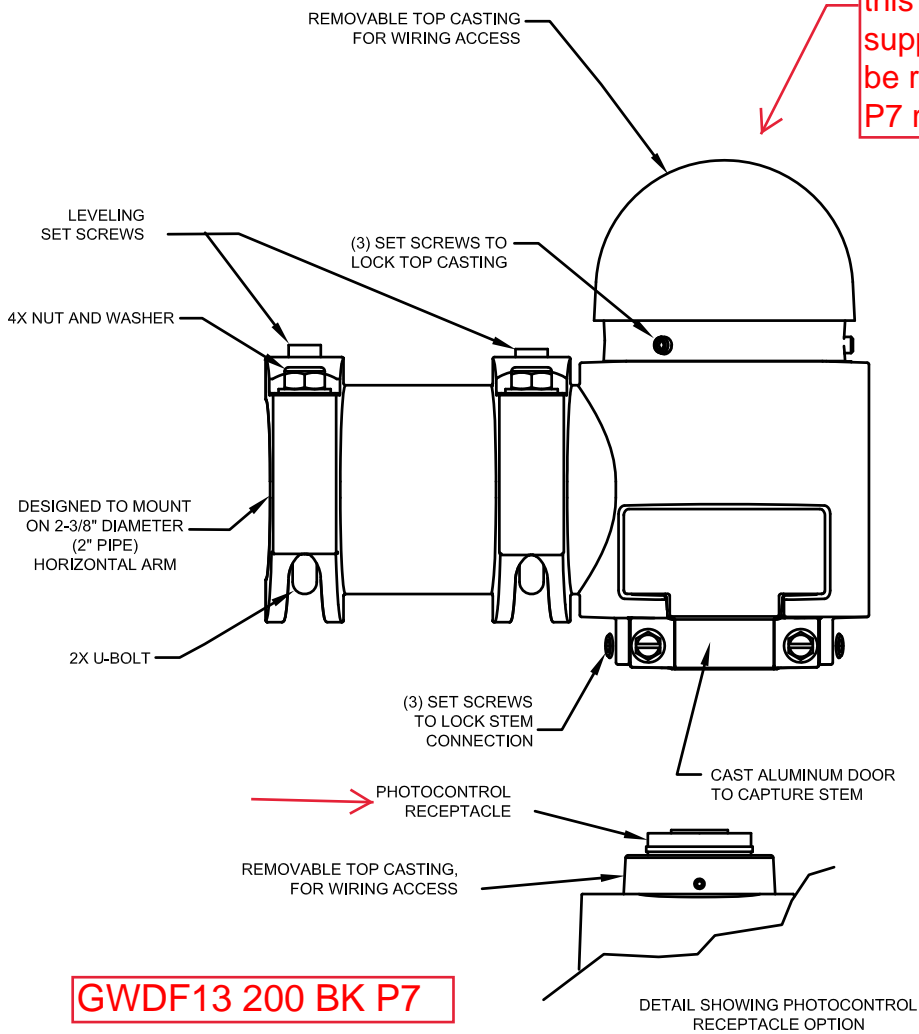


GlasWerks Style Decorative Arm Fitter

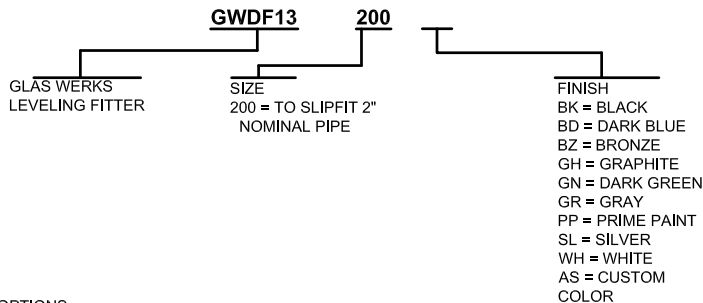
For Use with Quick Lock Stem mounting luminaires

City of Portland- Commercial Street



GWDF13 200 BK P7

ORDERING INFORMATION



OPTIONS
-R = PHOTOCONTROL RECEPTACLE (REPLACES THE STANDARD TOP COVER) FOR NEMA TWISTLOCK PHOTOCONTROLS

Specifications

GENERAL DESCRIPTION

The Glas Werks style decorative arm fitter is designed to replicate the look of period cast arm mounts.

this top cover not supplied but would be replaced with a P7 receptacle

The top cover, and door assembly shall be cast aluminum. All mounting and hardware shall be stainless steel.

INSTALLATION

The fitter is designed to be used with luminaires having a welded top mount stem. The contoured door (with integral lanyard) is removed to allow the stem to engage inside the fitter. The door is replaced to capture the luminaire stem. The fitter is provided with (2) U-bolts, washers and nuts and (2) leveling set screws that lock the fitter to a nominal 2" horizontal arm and allow a +/- 5 degree adjustment from horizontal to the fitter. The swivel action on the stem allows for +/- 4 degree adjustment from vertical. (3) set screws lock the threaded male connector in place. The cast top cover can be removed to allow access to the inside of the fitter to facilitate wire connections. (3) set screws lock the cover to the fitter.

FINISH

The fitter is finished with a polyester powder paint applied after a seven stage pretreatment process to insure maximum durability.

WARRANTY

Limited warranty located at [www.acuitybrands.com/CustomerResources/Terms and Conditions.aspx](http://www.acuitybrands.com/CustomerResources/TermsandConditions.aspx)

NOTE

Specifications subject to change without notice.

ARCHITECTURAL OUTDOOR ORDER #:

TYPE:

DRAWING NO: LUM_GWDF13

THIS DRAWING, WHEN APPROVED, SHALL BECOME THE COMPLETE SPECIFICATION FOR THE MATERIAL TO BE FURNISHED BY HOLOPHANE ON THE ORDER NOTED ABOVE. A UNIT OF SIMILAR DESIGN MAY BE SUPPLIED, BUT ONLY AFTER APPROVAL BY THE CUSTOMER IN WRITING. ON POLE ORDERS AN ANCHOR BOLT TEMPLATE PRINT WILL BE SUPPLIED WITH EACH ANCHOR BOLT ORDER TO MATCH THE POLE PROVIDED.

THIS PRINT IS THE PROPERTY OF HOLOPHANE AND IS LOANED SUBJECT TO RETURN UPON DEMAND AND UPON EXPRESS CONDITION THAT IT WILL NOT BE USED DIRECTLY OR INDIRECTLY IN ANY WAY DETRIMENTAL TO OUR INTERESTS, AND ONLY IN CONNECTION WITH MATERIAL FURNISHED BY HOLOPHANE.



© 2009 Acuity Brands Lighting, Inc., All Rights Reserved

SCALE: N/A
DRAWN: JCH
APP'D:
DATE: 4-1-13