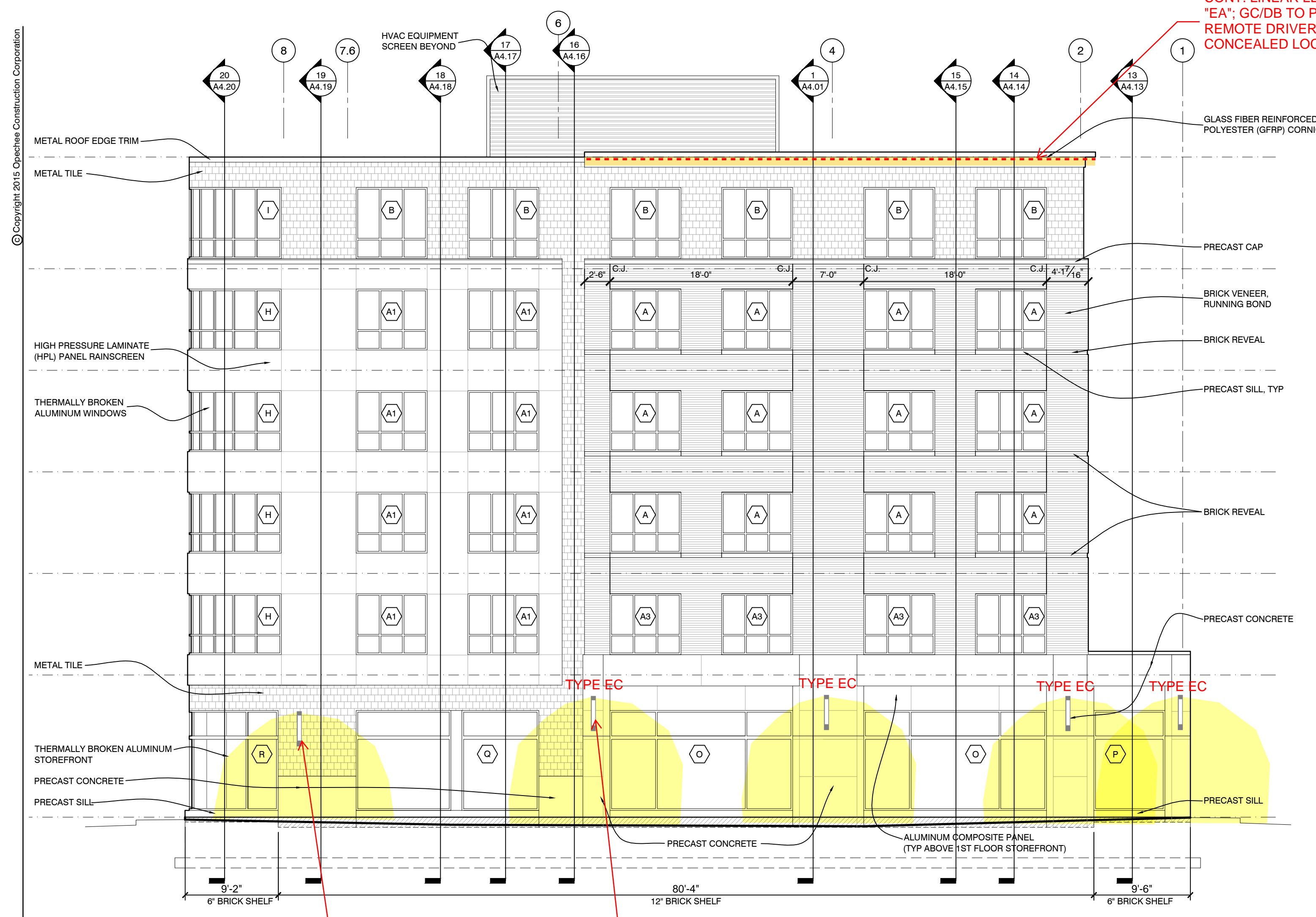


© Copyright 2016 Opechee Construction Corporation



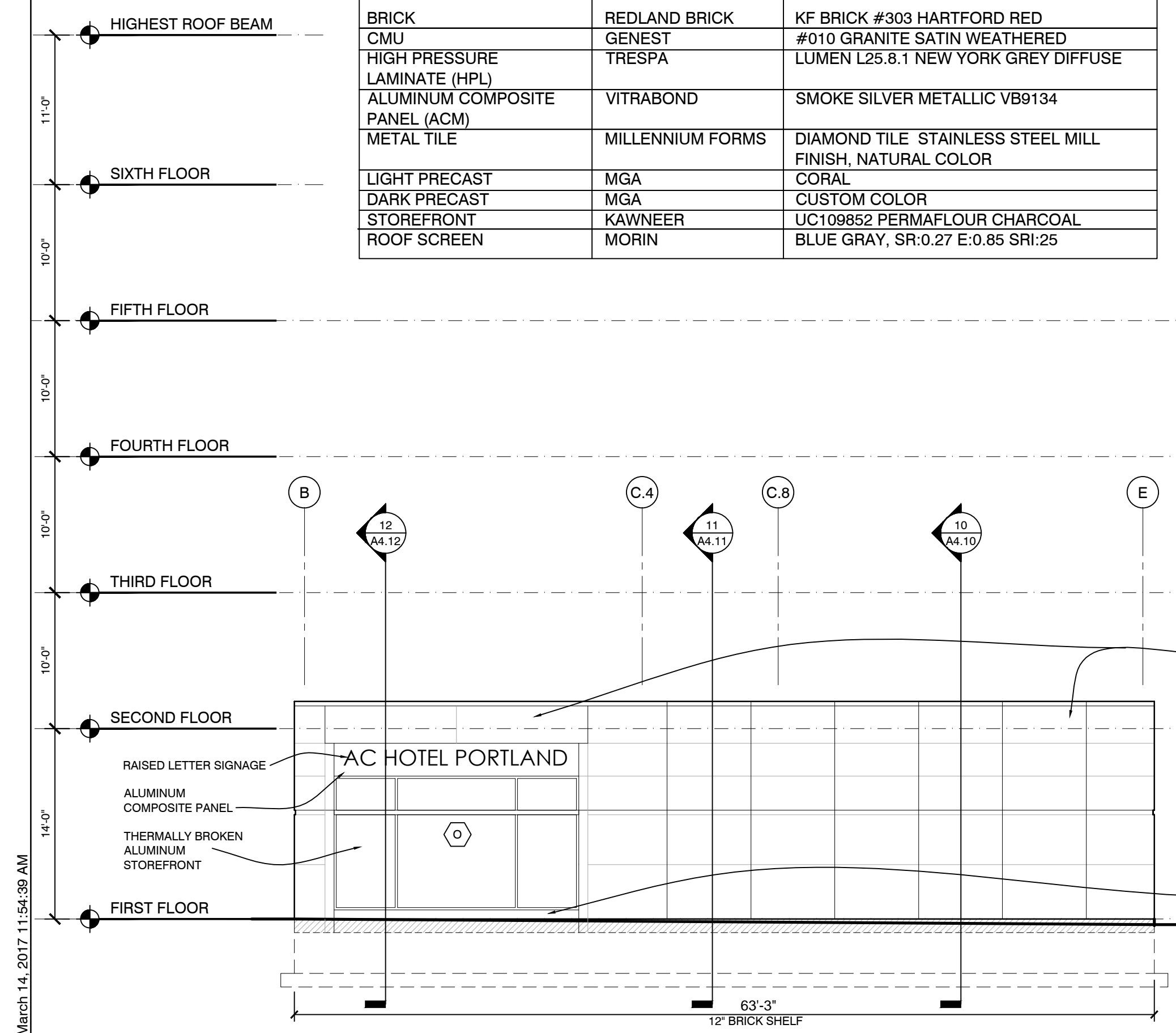
5 WEST EXTERIOR ELEVATION
1/8" = 1'-0"

TOP OF FIXTURE TO ALIGN W/TOP OF WINDOW HEAD AT METAL SHINGLE, TYP. GC/EC TO COORD. JBOX WITH FIXTURE SPECIFICATIONS.

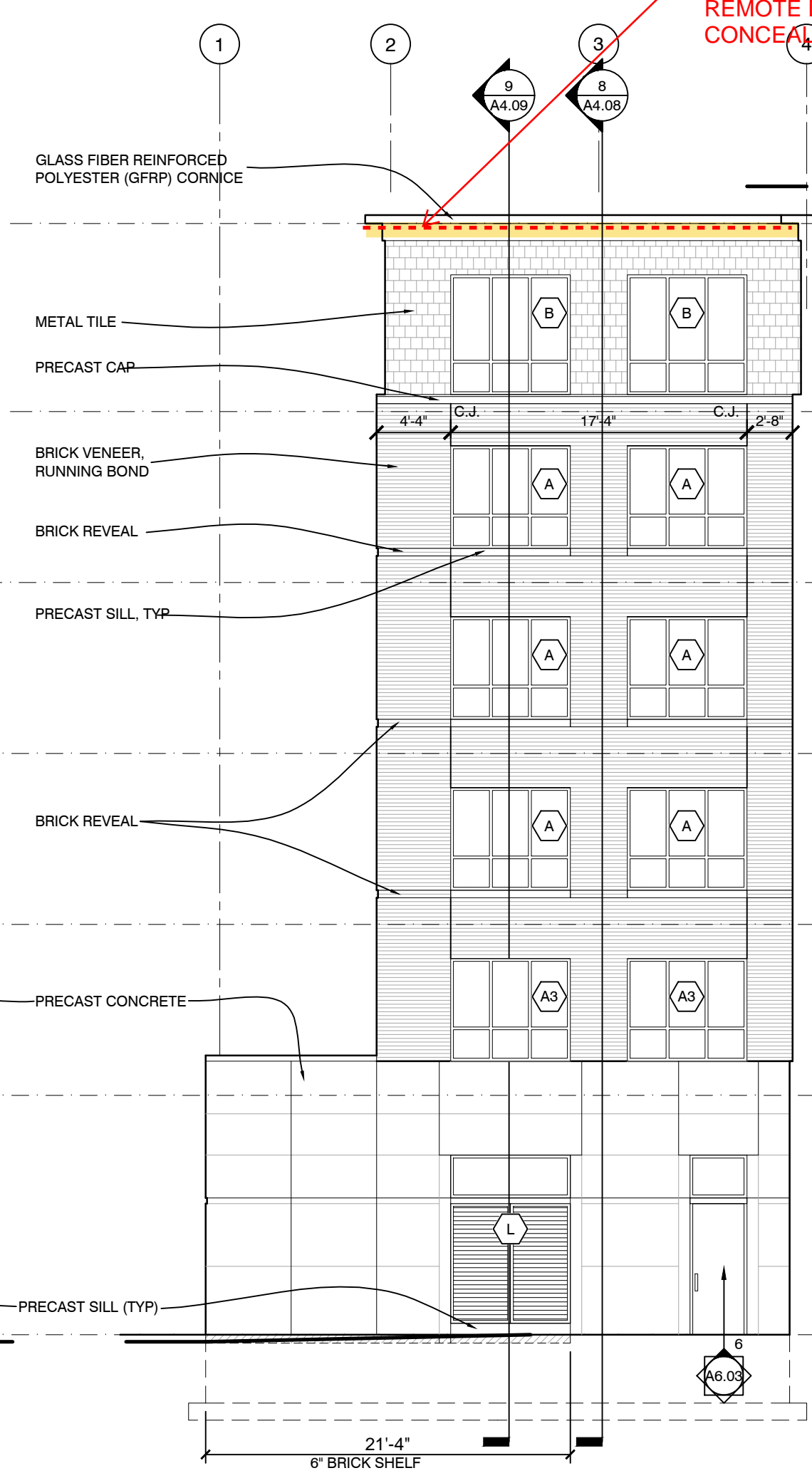
CENTER OF FIXTURE TO ALIGN W/TOP OF WINDOW HEAD AT PRECAST, TYP. GC/EC TO COORD. JBOX WITH FIXTURE SPECIFICATIONS.

OR MATERIAL LEGEND:

MATERIAL	MANUFACTURER	COLOR/FINISH
BRICK	REDLAND BRICK	KF BRICK #303 HARTFORD RED
CMU	GENEST	#010 GRANITE SATIN WEATHERED
HIGH PRESSURE LAMINATE (HPL)	TRESPA	LUMEN L25.8.1 NEW YORK GREY DIFFUSE
ALUMINUM COMPOSITE PANEL (ACM)	VITRABOND	SMOKE SILVER METALLIC VB9134
METAL TILE	MILLENNIUM FORMS	DIAMOND TILE STAINLESS STEEL MILL FINISH, NATURAL COLOR
LIGHT PRECAST	MGA	CORAL
DARK PRECAST	MGA	CUSTOM COLOR
STOREFRONT	KAWNEER	UC109852 PERMAFLOW CHARCOAL
ROOF SCREEN	MORIN	BLUE GRAY, SR.0.27 E.0.85 SRI.25

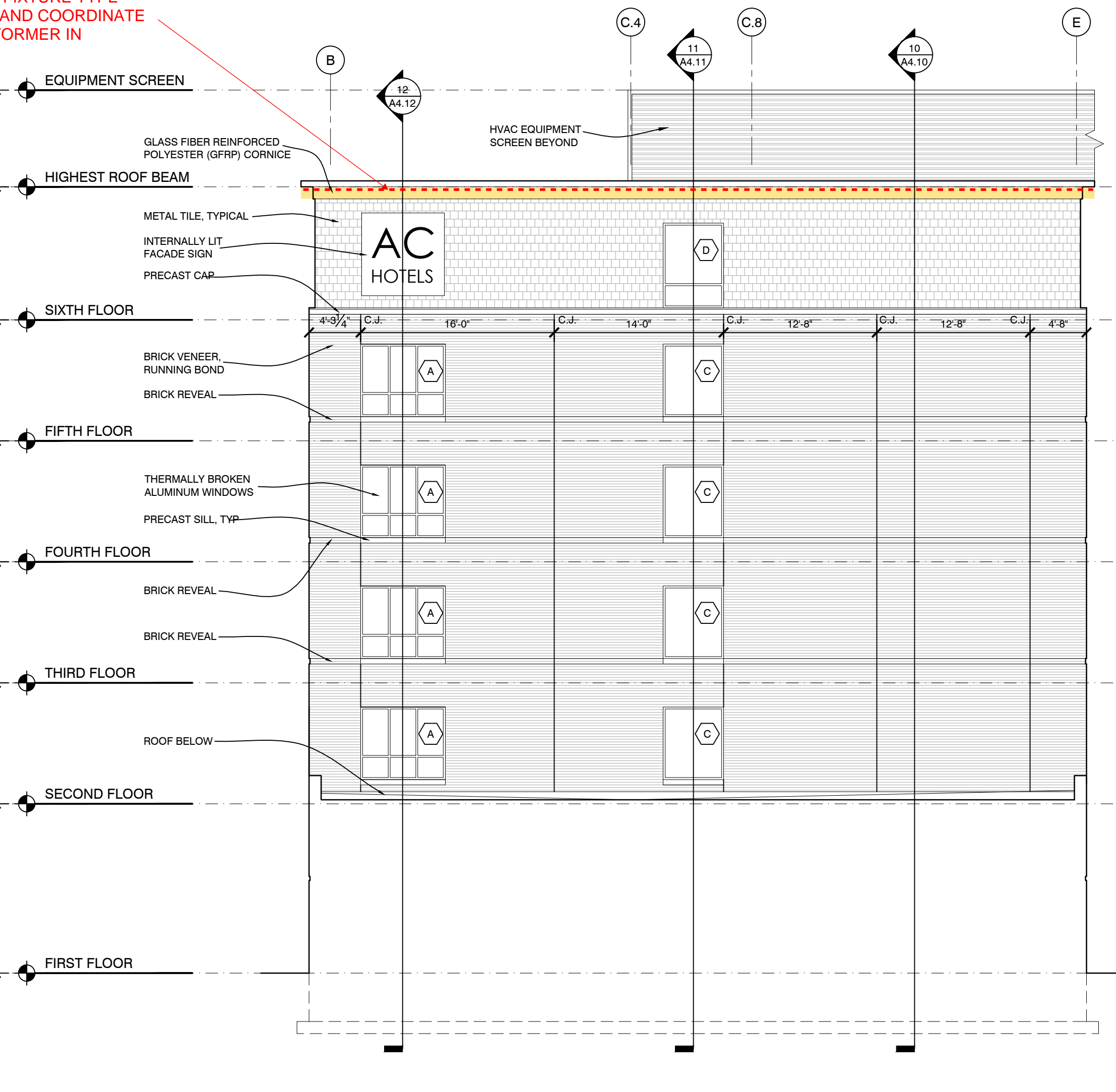


3 SOUTH LEVEL 1 EXTERIOR ELEVATION
1/8" = 1'-0"

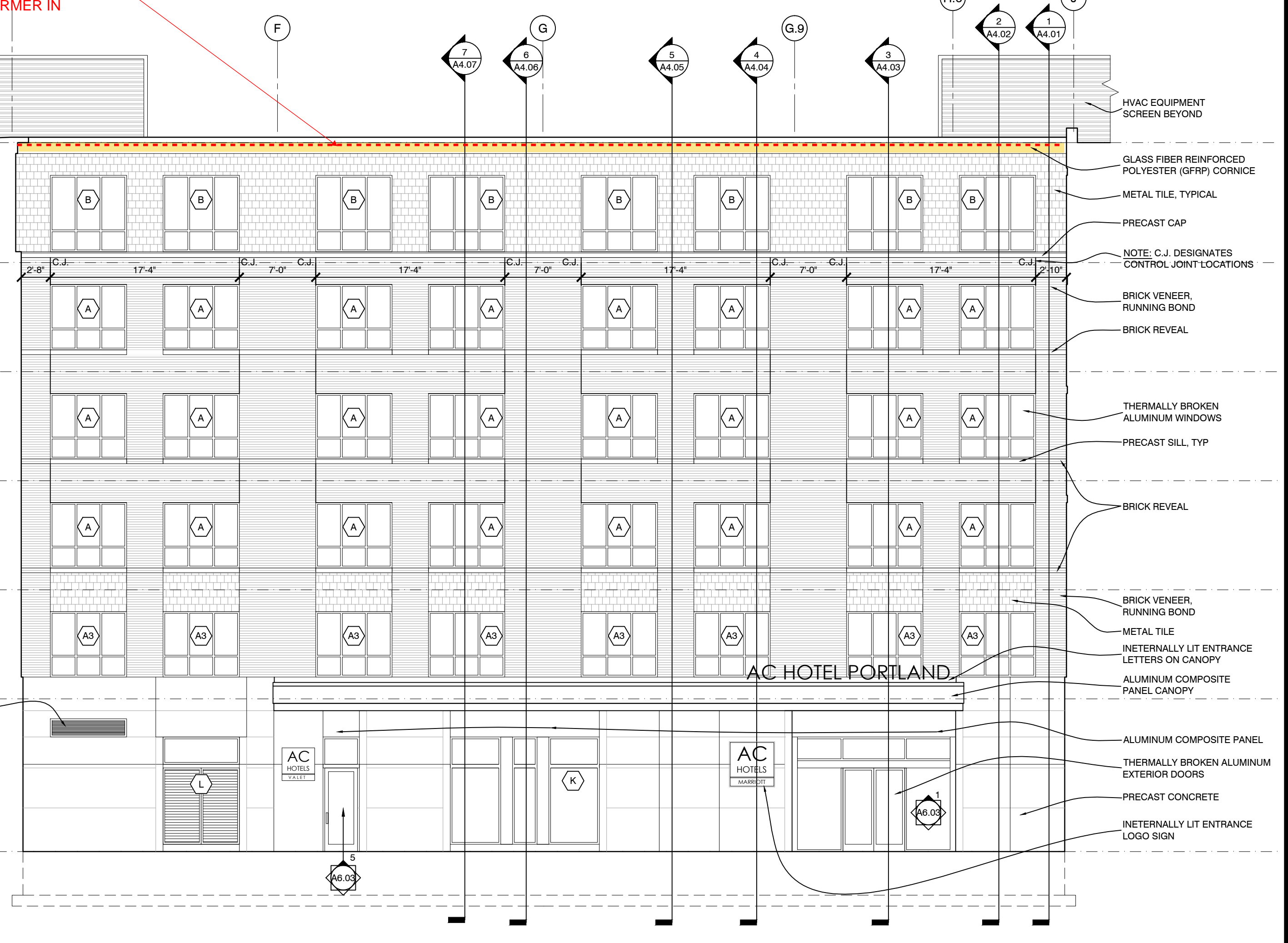


2 EAST INSIDE CORNER EXTERIOR ELEVATION
1/8" = 1'-0"

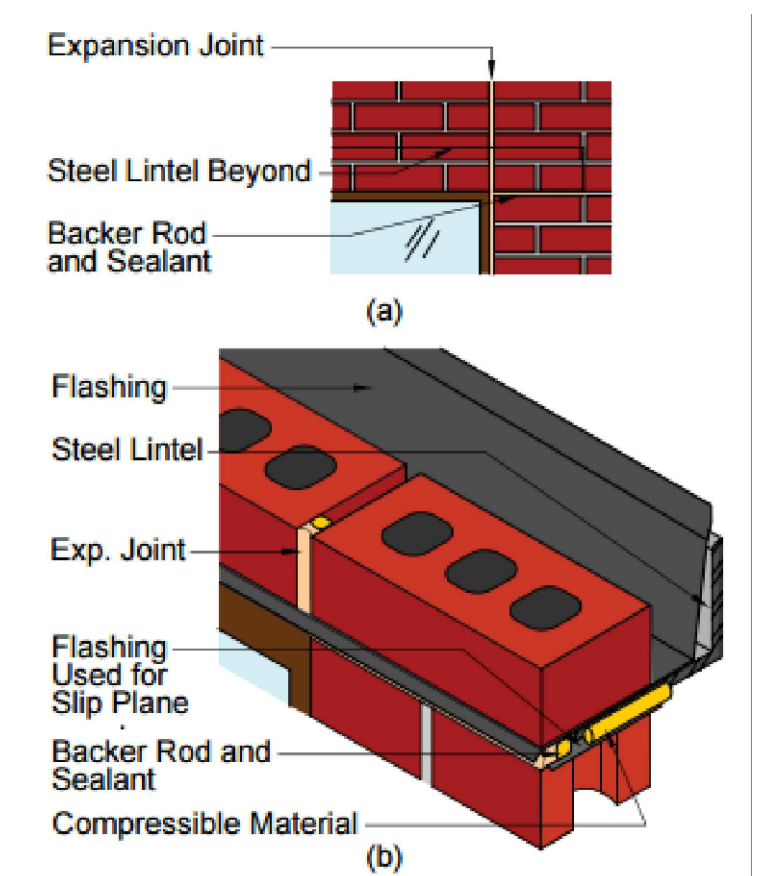
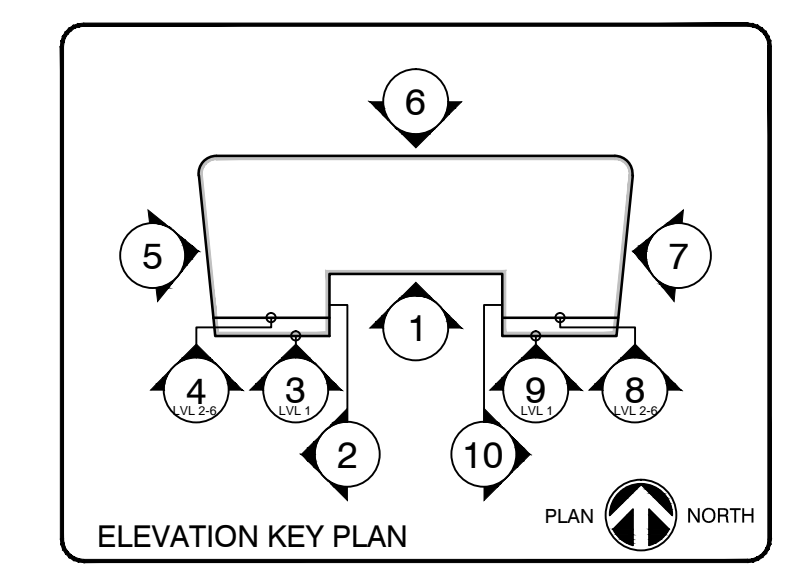
CONT. LINEAR LED LIGHT FIXTURE TYPE "EA"; GC/DB TO PROVIDE AND COORDINATE REMOTE DRIVER/TRANSFORMER IN CONCEALED LOCATION.



4 SOUTH LEVELS 2-6 EXTERIOR ELEVATION
1/8" = 1'-0"

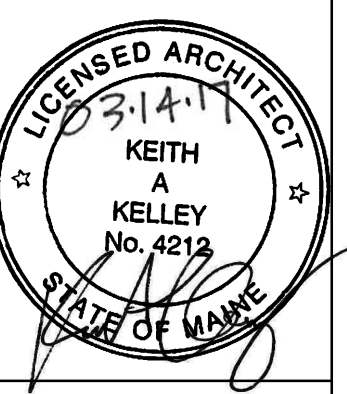


1 SOUTH EXTERIOR ELEVATION
1/8" = 1'-0"



CONTROL JOINT (C.J.) DETAIL AT LOOSE LINTEL

- SIZE LINTEL LENGTH TO ALLOW 1/8"-1/4" EXPANSION. PLACE COMPRESSIBLE FILLER IN GAPS AT ENDS OF LINTEL.
- FORM SLIP PLANE BY PLACING FLASHING BELOW BEARING ENDS OF LINTEL.
- TO ALLOW FOR DIFFERENTIAL MOVEMENT, DO NOT GROUT IN FRONT OF STEEL ANGLE. APPLY BACKER ROD & SEALANT.
- REFER TO A4 SERIES DRAWINGS FOR WALL CONSTRUCTION AND WINDOW HEAD DETAILS.



AC HOTELS by MARRIOTT
Fore Street / Hancock Street / Thames Street
Portland, Maine

REVISION:
01-03-17 PRECAST UPDATED PER SHOPS
01-13-17 SECTION & WINDOW TAG #S
01-27-17 MATERIAL LEGEND & C.J'S ADDED
03-10-17 ACM PANEL NOTES

ISSUED:
08-12-16 FOUNDATION & STEEL PERMIT
10-18-16 80% MARRIOTT REVIEW
10-21-16 BUILDING SHELL PERMIT
03-14-17 BUILDING PERMIT

project architect: KAK
drawn by: DLS

EXTERIOR BUILDING ELEVATIONS

sheet number:
A3.01

Tuesday, March 14, 2017 11:54:39 AM

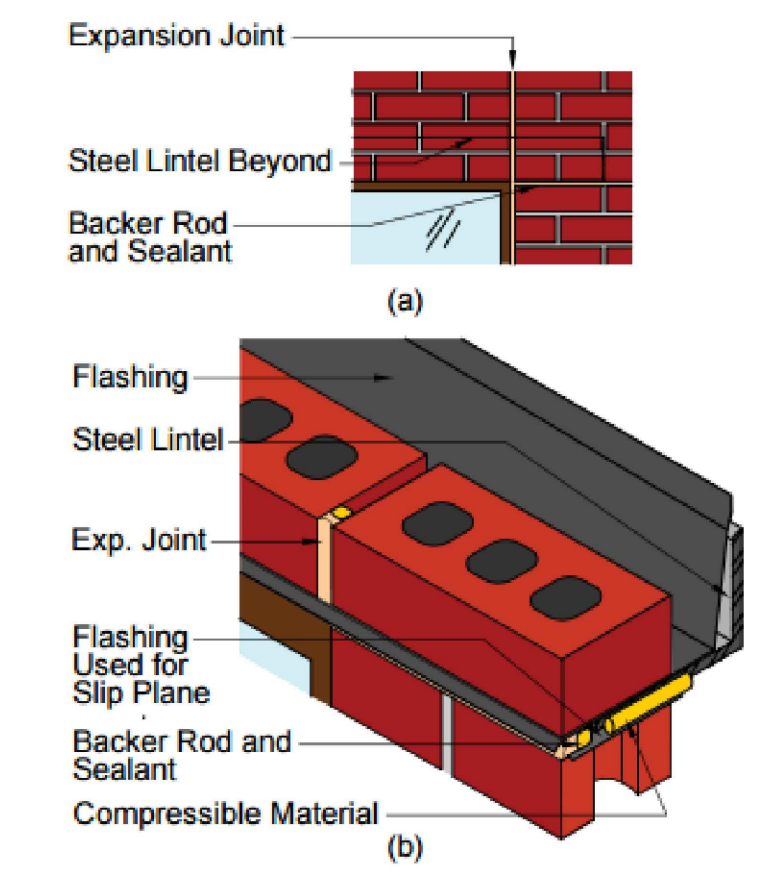
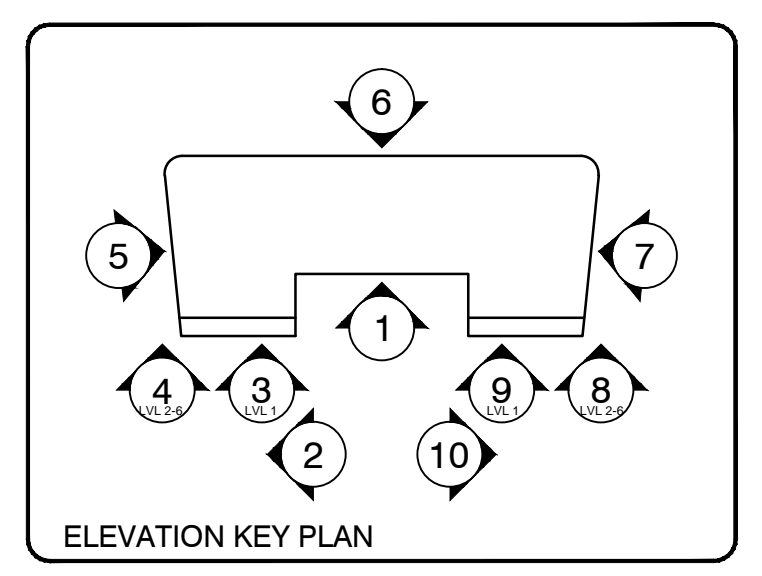
Copyright 2016 Opechee Construction Corporation



7 EAST EXTERIOR ELEVATION
1/8" = 1'-0"

EXTERIOR MATERIAL LEGEND:

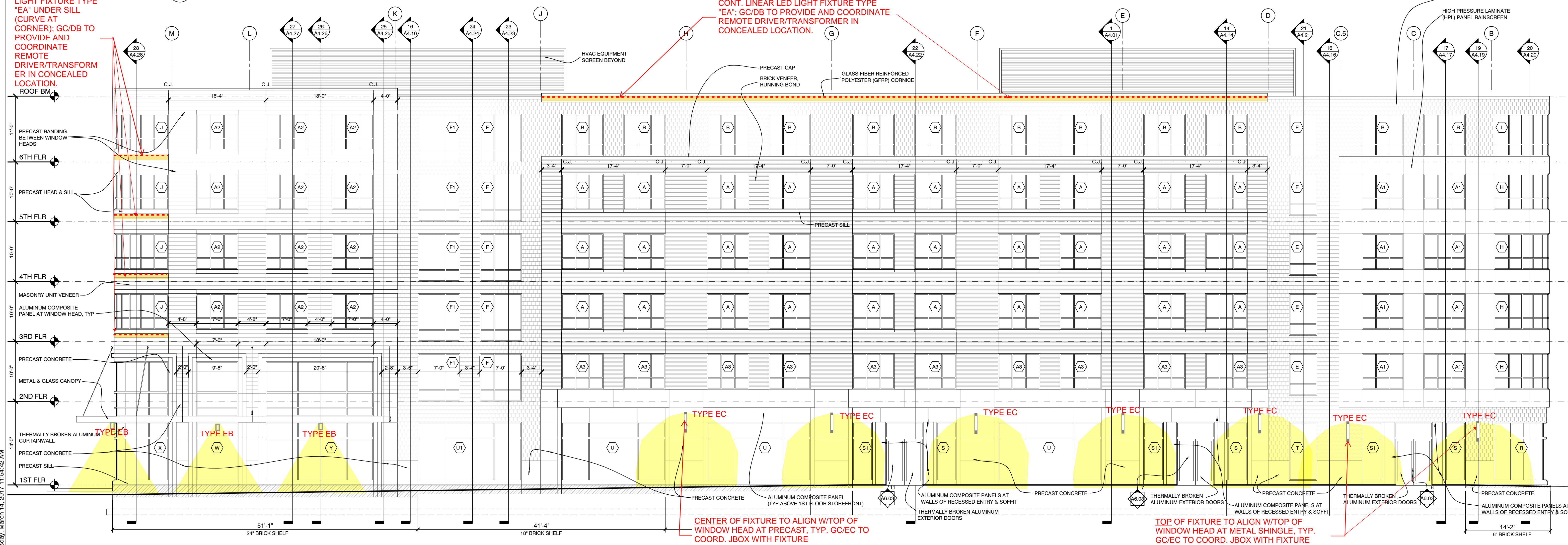
MATERIAL	MANUFACTURER	COLOR/FINISH
BRICK	REDLAND BRICK	KF BRICK #303 HARTFORD RED
CMU	GENEST	#010 GRANITE SATIN WEATHERED
HIGH PRESSURE LAMINATE (HPL)	TRESPA	LUMEN L25.8.1 NEW YORK GREY DIFFUSE
ALUMINUM COMPOSITE PANEL (ACM)	VITRABOND	SMOKE SILVER METALLIC VB9134
METAL TILE	MILLENNIUM FORMS	DIAMOND TILE STAINLESS STEEL MILL FINISH, NATURAL COLOR
LIGHT PRECAST	MGA	CORAL
DARK PRECAST	MGA	CUSTOM COLOR
STOREFRONT	KAWNEER	UC109852 PERMAFLOUR CHARCOAL
ROOF SCREEN	MORIN	BLUE GRAY, SR.0.27 E.0.85 SRI.25



- SIZE LINTEL LENGTH TO ALLOW 1/8"-1/4" EXPANSION. PLACE COMPRESSIBLE FILLER IN GAPS AT ENDS OF LINTEL.
- FORM SLIP PLANE BY PLACING FLASHING BELOW BEARING ENDS OF LINTEL.
- TO ALLOW FOR DIFFERENTIAL MOVEMENT, DO NOT GROUT IN FRONT OF STEEL ANGLE. APPLY BACKER ROD & SEALANT.
- REFER TO A4 SERIES DRAWINGS FOR WALL CONSTRUCTION AND WINDOW HEAD DETAILS.

CONT. LINEAR LED LIGHT FIXTURE TYPE "EA" UNDER SILL (CURVE AT CORNER); GC/DB TO PROVIDE AND COORDINATE REMOTE DRIVER/TRANSFORMER IN CONCEALED LOCATION.

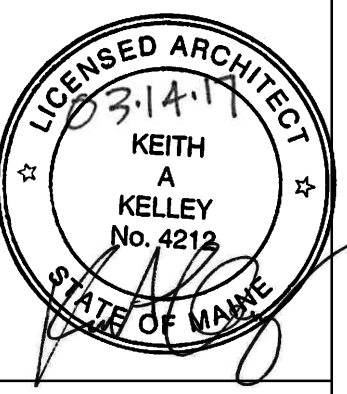
CONT. LINEAR LED LIGHT FIXTURE TYPE "EA"; GC/DB TO PROVIDE AND COORDINATE REMOTE DRIVER/TRANSFORMER IN CONCEALED LOCATION.



6 NORTH EXTERIOR ELEVATION
1/8" = 1'-0"

CENTER OF FIXTURE TO ALIGN W/TOP OF WINDOW HEAD AT PRECAST, TYP. GC/EC TO COORD. JBOX WITH FIXTURE SPECIFICATIONS.

TOP OF FIXTURE TO ALIGN W/TOP OF WINDOW HEAD AT METAL SHINGLE, TYP. GC/EC TO COORD. JBOX WITH FIXTURE SPECIFICATIONS.



AC HOTELS by MARRIOTT
Fore Street / Hancock Street / Thames Street
Portland, Maine

REVISION:
01-03-17 PRECAST UPDATED PER SHOPS
01-13-17 SECTION & WINDOW TAG #S
01-27-17 MATERIAL LEGEND & C/S ADDED
03-10-17 ACM PANEL NOTES

ISSUED:
08-12-16 FOUNDATION & STEEL PERMIT
10-18-16 80% MARRIOTT REVIEW
10-21-16 BUILDING SHELL PERMIT
03-14-17 BUILDING PERMIT

project architect: KAK
drawn by: DLS

EXTERIOR BUILDING ELEVATIONS

sheet number:
A3.02

Tuesday, March 14, 2017 11:54:42 AM