

ADJACENT SURFACE = SLOPED GRANITE CURB, SEE SITE PLAN AND CIVIL DETAILS. FINISH GRADE VARIES, SEE GRADING PLAN. SET CONC. FOOTING TIGHT TO BACK TO CURB, FILL SURFACE GAP WITH BRICK PAVER

6" DIA. LIGHT COLUMN BOLLARD + FOOTING. SET TOP OF FOOTING AT DEPTH BELOW FINISHED GRADE EQUAL TO SAND SETTING BED - SO NOT TO BE VISIBLE AT SURFACE. RUN PAVERS UP TO BOLLARD, LOWER ESCUTCHEON (COVER FLANGE) OVER BOLLARD DOWN ONTO BRICKS AND SILICONE IN PLACE.

PROVIDE CLAMP & BOND TO POLE WITH #6 COPPER

1/2" 5/8" BASE PLATE W/ 1/2" WASHER AND 1/2" 13/16" NUT / ANCHOR, MANUFACTURER SUPPLIED

BRICK PAVER SIDEWALK, SEE CIVIL DETAILS, C21

NOTE: BOLLARD BASE ANCHOR J-BOLTS AND PLACEMENT TEMPLATE WILL BE SUPPLIED BY THE MANUFACTURER PRIOR TO BASE MANUFACTURING. INSTALL BOLLARD PER MANUFACTURER'S INSTALLATION INSTRUCTIONS.

GALVANIZED STEEL ANCHOR J-BOLTS (1/2" 13/16") AS PER POLE MANUFACTURER'S STANDARDS

CONDUIT AS REQUIRED FOR CIRCUIT

3/4" X 8"-0" COPPER GROUND ROD

6" COMPACTED DENSE GRADED CRUSHED STONE

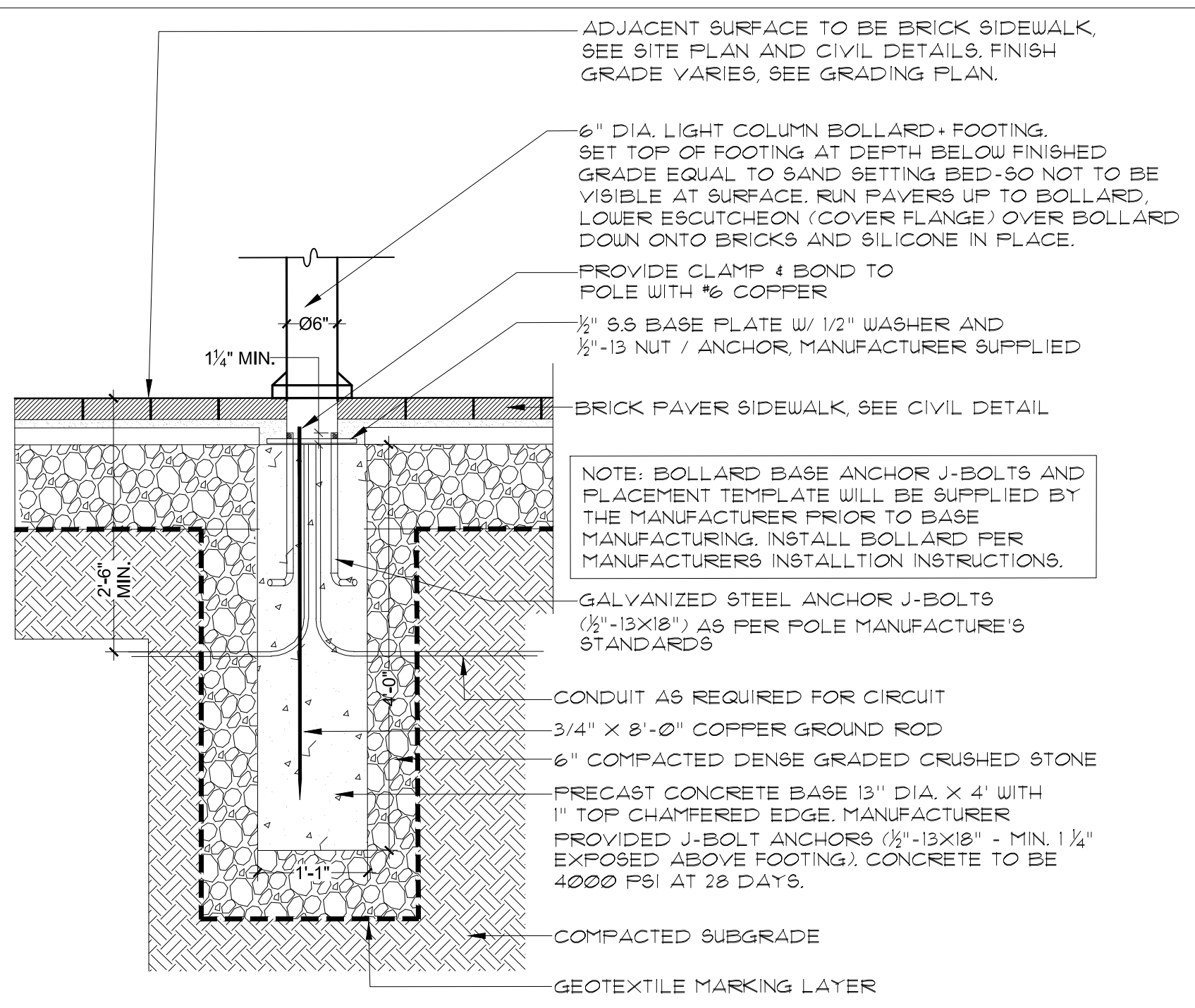
PRECAST CONCRETE BASE 13" DIA. X 4" WITH 1" TOP CHAMFERED EDGE, MANUFACTURER PROVIDED J-BOLT ANCHORS (1/2" 13/16") - MIN. 1 1/4" EXPOSED ABOVE FOOTING. CONCRETE TO BE 4000 PSI AT 28 DAYS.

COMPACTED SUBGRADE

GEOTEXTILE MARKING LAYER

LIGHT BOLLARDS AROUND CUL-DE-SAC
LOCATE FOOTING TIGHT TO BACK OF CURB, FILL SURFACE GAP WITH BRICK PAVER, CENTER BETWEEN TREE GRATES OR EQUAL SPACING AS SHOWN, TYP.

- NOTES:
1. SHOP DRAWINGS REQUIRED.
 2. TOP OF CONC. FOOTING TO BE SET FLUSH WITH BOTTOM OF BRICK PAVERS.
 3. LIGHT BOLLARD TO BE FORM'S-SURFACE LED LIGHT COLUMN BOLLARD, SERIES 600 IN STAINLESS STEEL W/ SATIN FINISH AND WHITE FROSTED ACRYLIC LENS NO SHIELD, MODEL LBLCO-004 W/ 3000W WARM WHITE LED.
 4. LIGHT BOLLARD TO BE SURFACE MOUNTED W/ J-BOLTS PER MANUFACTURER'S INSTRUCTIONS.



ADJACENT SURFACE TO BE BRICK SIDEWALK, SEE SITE PLAN AND CIVIL DETAILS. FINISH GRADE VARIES, SEE GRADING PLAN.

6" DIA. LIGHT COLUMN BOLLARD + FOOTING. SET TOP OF FOOTING AT DEPTH BELOW FINISHED GRADE EQUAL TO SAND SETTING BED - SO NOT TO BE VISIBLE AT SURFACE. RUN PAVERS UP TO BOLLARD, LOWER ESCUTCHEON (COVER FLANGE) OVER BOLLARD DOWN ONTO BRICKS AND SILICONE IN PLACE.

PROVIDE CLAMP & BOND TO POLE WITH #6 COPPER

1/2" 5/8" BASE PLATE W/ 1/2" WASHER AND 1/2" 13/16" NUT / ANCHOR, MANUFACTURER SUPPLIED

BRICK PAVER SIDEWALK, SEE CIVIL DETAIL

NOTE: BOLLARD BASE ANCHOR J-BOLTS AND PLACEMENT TEMPLATE WILL BE SUPPLIED BY THE MANUFACTURER PRIOR TO BASE MANUFACTURING. INSTALL BOLLARD PER MANUFACTURER'S INSTALLATION INSTRUCTIONS.

GALVANIZED STEEL ANCHOR J-BOLTS (1/2" 13/16") AS PER POLE MANUFACTURER'S STANDARDS

CONDUIT AS REQUIRED FOR CIRCUIT

3/4" X 8"-0" COPPER GROUND ROD

6" COMPACTED DENSE GRADED CRUSHED STONE

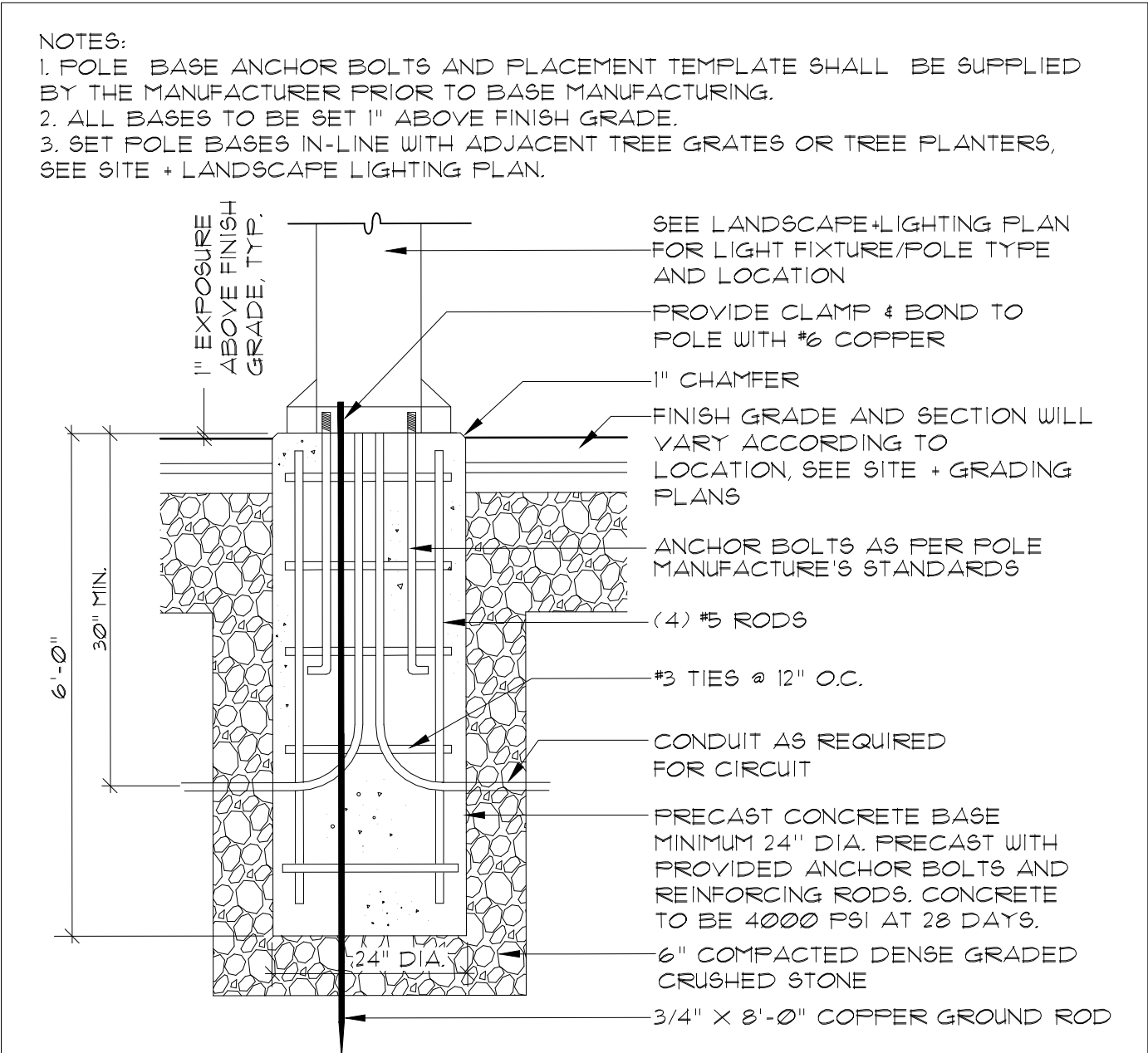
PRECAST CONCRETE BASE 13" DIA. X 4" WITH 1" TOP CHAMFERED EDGE, MANUFACTURER PROVIDED J-BOLT ANCHORS (1/2" 13/16") - MIN. 1 1/4" EXPOSED ABOVE FOOTING. CONCRETE TO BE 4000 PSI AT 28 DAYS.

COMPACTED SUBGRADE

GEOTEXTILE MARKING LAYER

LIGHT BOLLARDS ALONG ENTRY DRIVE CENTERED
BETWEEN AND IN-LINE WITH CENTER OF TREE GRATES

1 LIGHT BOLLARD + BASE



- NOTES:
1. POLE BASE ANCHOR BOLTS AND PLACEMENT TEMPLATE SHALL BE SUPPLIED BY THE MANUFACTURER PRIOR TO BASE MANUFACTURING.
 2. ALL BASES TO BE SET 1" ABOVE FINISH GRADE.
 3. SET POLE BASES IN-LINE WITH ADJACENT TREE GRATES OR TREE PLANTERS, SEE SITE + LANDSCAPE LIGHTING PLAN.

SEE LANDSCAPE LIGHTING PLAN FOR LIGHT FIXTURE/POLE TYPE AND LOCATION

PROVIDE CLAMP & BOND TO POLE WITH #6 COPPER

1" CHAMFER

FINISH GRADE AND SECTION WILL VARY ACCORDING TO LOCATION, SEE SITE + GRADING PLANS

ANCHOR BOLTS AS PER POLE MANUFACTURER'S STANDARDS

(4) #5 RODS

#3 TIES @ 12" O.C.

CONDUIT AS REQUIRED FOR CIRCUIT

PRECAST CONCRETE BASE MINIMUM 24" DIA. PRECAST WITH PROVIDED ANCHOR BOLTS AND REINFORCING RODS. CONCRETE TO BE 4000 PSI AT 28 DAYS.

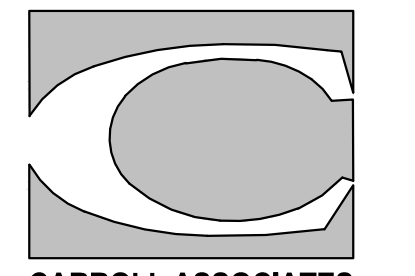
6" COMPACTED DENSE GRADED CRUSHED STONE

3/4" X 8"-0" COPPER GROUND ROD

2 LIGHT POLE BASE

Site: **PROPOSED AC HOTEL PORTLAND**
FORE STREET / HANCOCK STREET / THAMES STREET
PORTLAND, MAINE

Prepared for: **PORTLAND NORWICH GROUP, LLC**
2330 PALM RIDGE ROAD #305
SANIBEL, FL 33957



CARROLL ASSOCIATES
LANDSCAPE ARCHITECTS
217 COMMERCIAL STREET, STE 200
PORTLAND, MAINE 04101
207.772.1552



RANSOM
Consulting Engineers and Scientists
400 Commercial Street, Suite 404
Portland, ME 04101
Tel. (207) 772-2891
Fax (207) 772-3248
www.ransomenv.com

LANDSCAPE DETAILS

No.	Revision/Issue	Date
D	CITY REVS / FOR CONSTRUCTION	6/30/17
C	STAFF REVIEW COMMENTS	05/10/16
B	FINAL SITE PLAN REVIEW	03/15/16
A	PRELIMINARY REVIEW	09/29/15

Design by:	Checked by:
MAP/PC	PC
Drawn by:	Approved by:
Project No. 150.06094	Project Name: FEBRUARY 2016



DATE OF APPROVAL: **1/2/26**
PLANNER: **Nell Denigson**
PROJECT NO.: **2015-169**