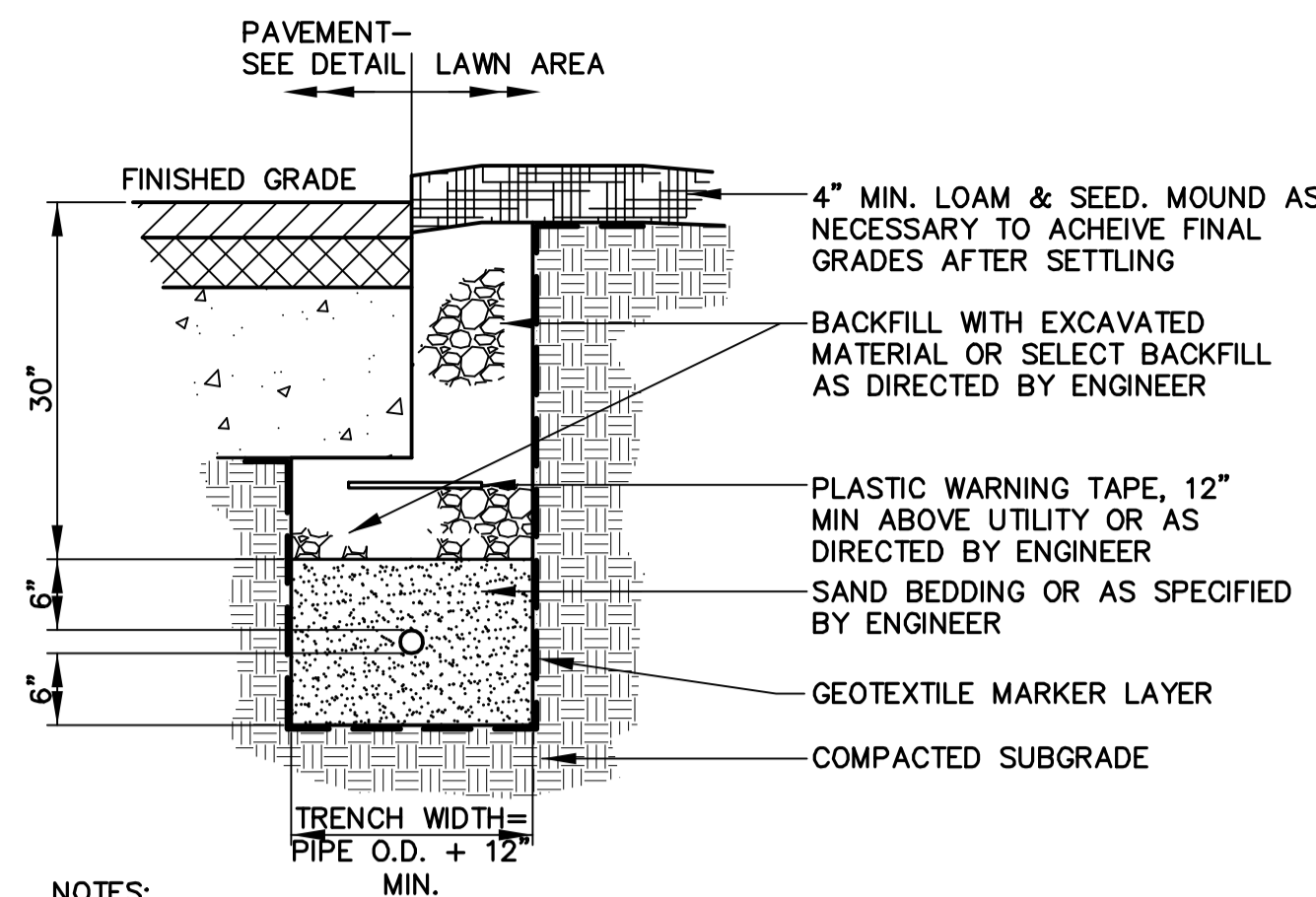
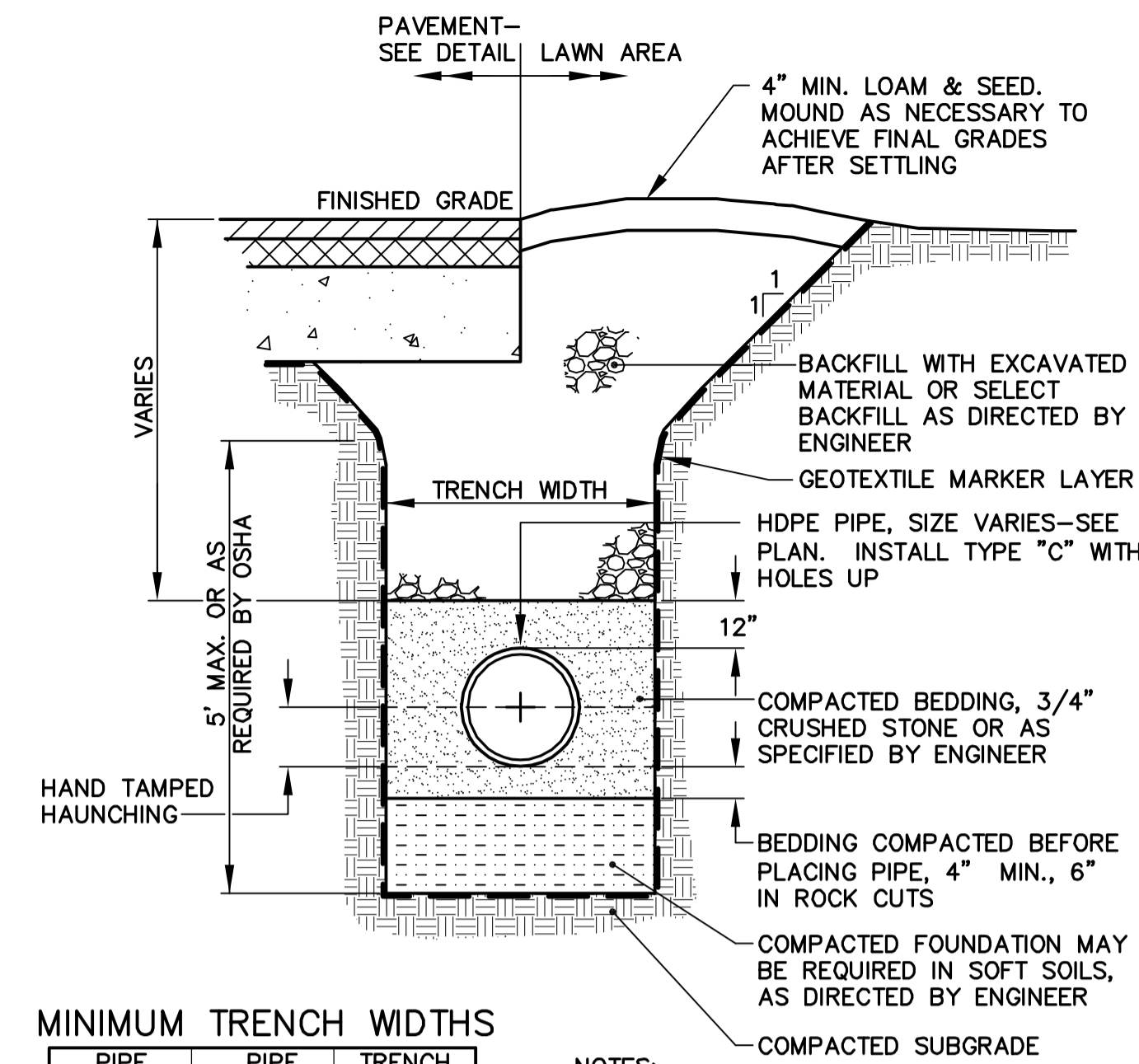


1 UNDERGROUND UTILITY TRENCH DETAIL (WITHIN SITE)
NOT TO SCALE



2 GAS OR ELECTRIC UTILITY TRENCH SECTION
NOT TO SCALE

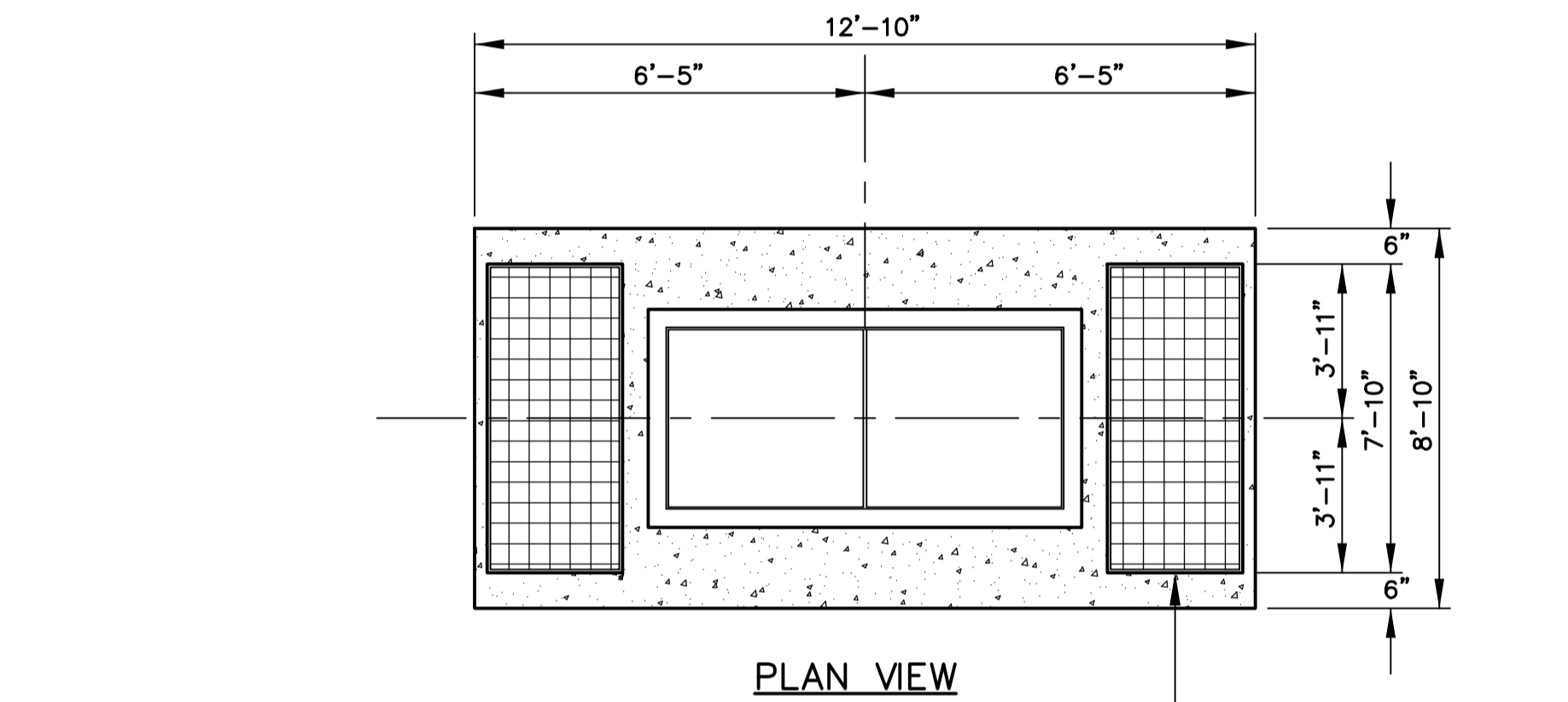


MINIMUM TRENCH WIDTHS

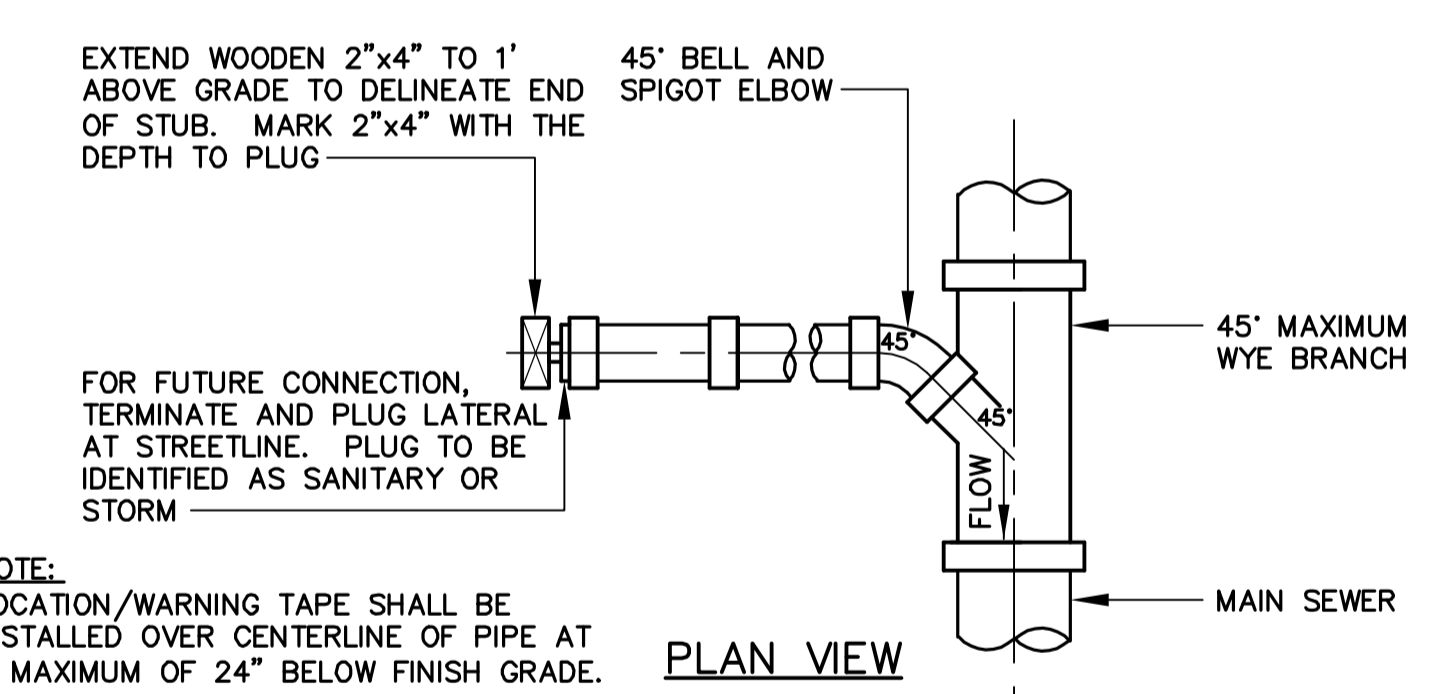
PIPE DIA.	PIPE O.D.	TRENCH WIDTH
12"	14.45"	31"
15"	17.65"	34"
18"	21.10"	39"
24"	28.30"	48"
30"	36.10"	66"
36"	42.25"	78"
42"	47.00"	83"
48"	53.00"	89"
60"	66.30"	102"

- NOTES:
- WHERE TRENCHES PENETRATE DETENTION BASIN EMBANKMENTS OR OTHER SUCH SPECIAL SECTIONS, BACKFILL SHALL CONFORM TO THEIR REQUIREMENTS.
 - INSTALL WATER STOPS EVERY 100' OR AS NECESSARY TO PREVENT FINES FROM MIGRATING.
 - TRENCH WIDTH SHALL BE WIDE ENOUGH TO ACCOMMODATE COMPACTION EQUIPMENT.

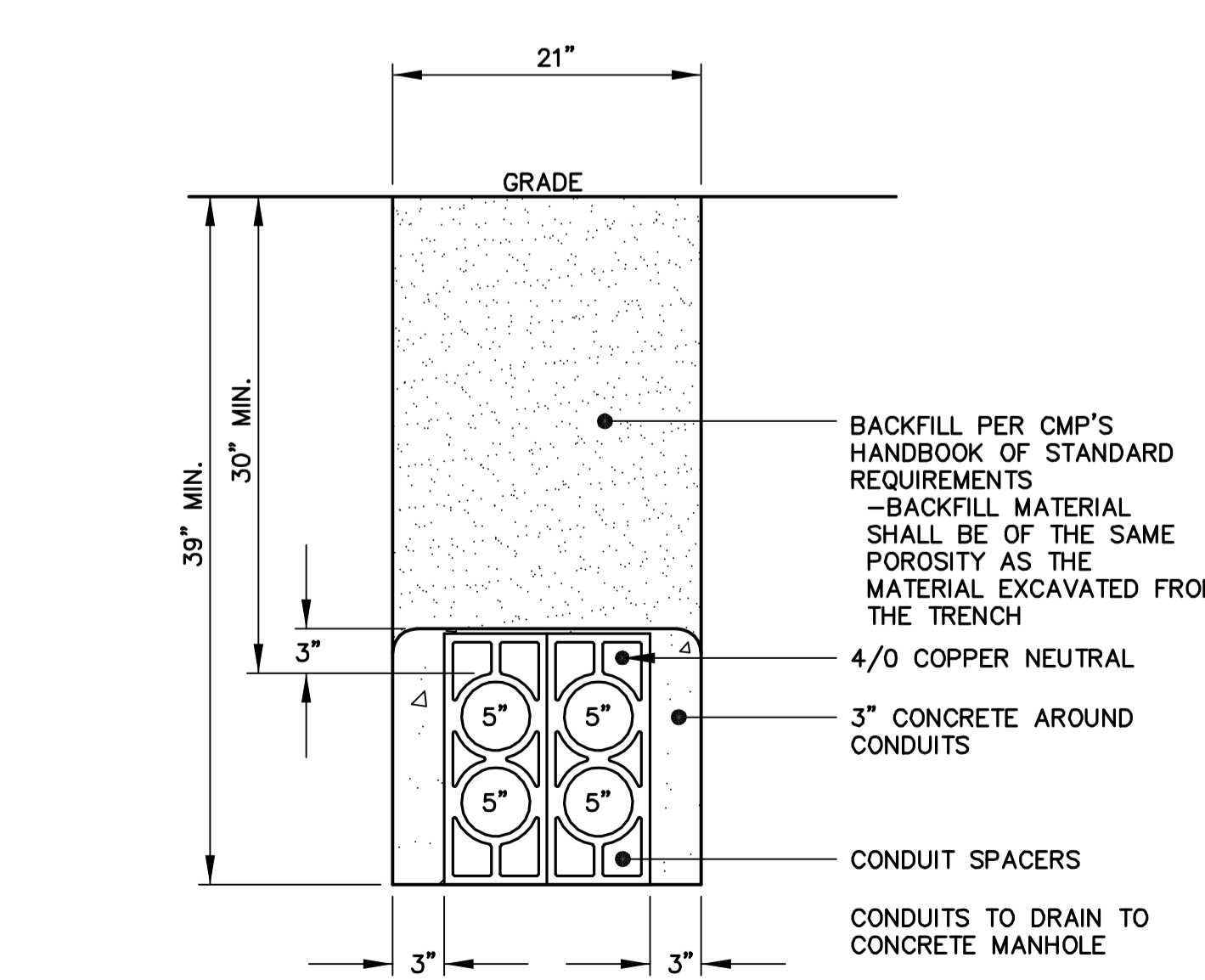
3 STORM/SANITARY PIPE TRENCH
NOT TO SCALE



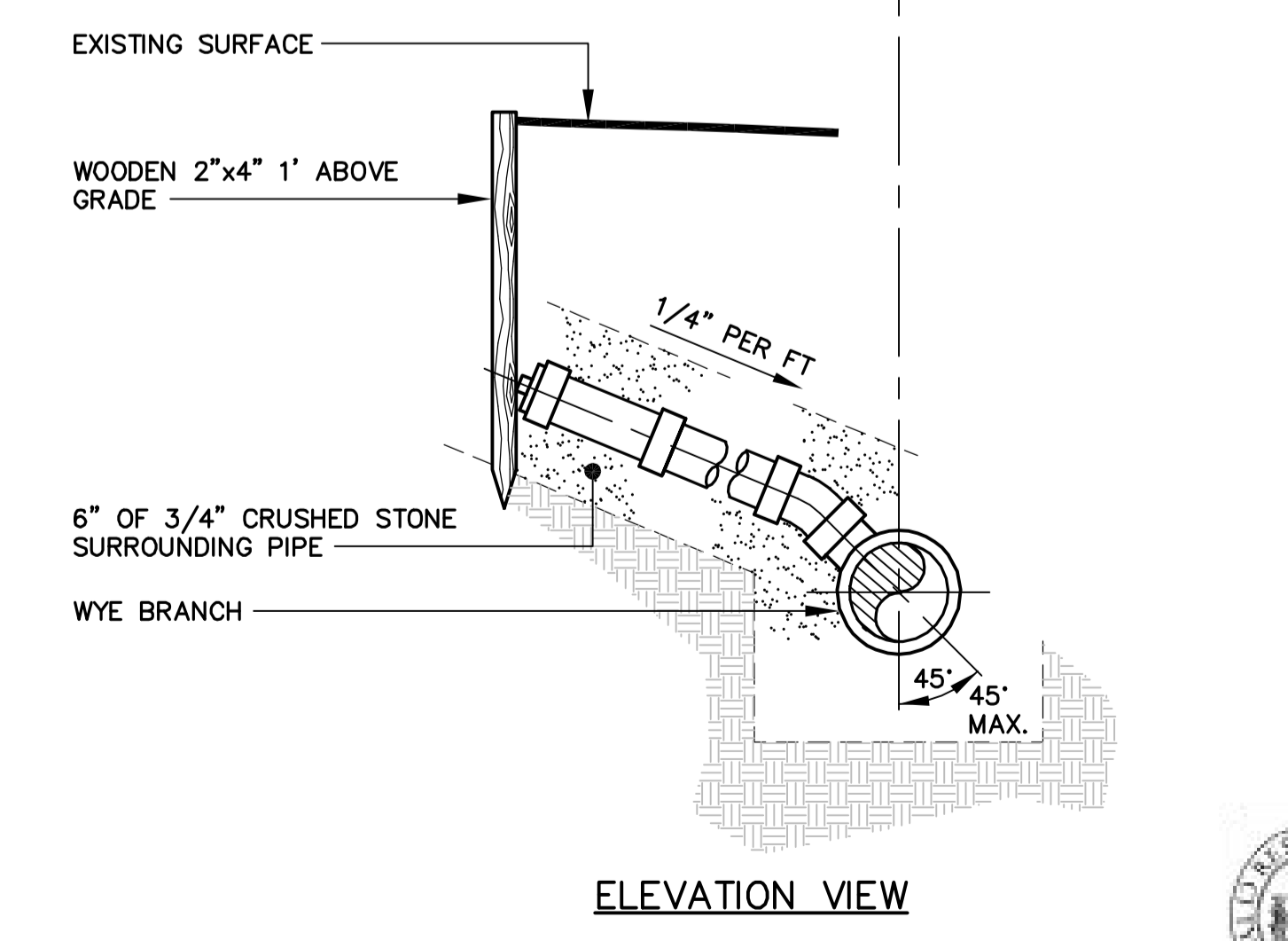
4 WATER TRENCH SECTION
NOT TO SCALE



5 8' x 12' SIDEWALK VAULT
NOT TO SCALE



6 CONCRETE ENCASED DUCT
NOT TO SCALE



7 TYPICAL HOUSE LATERAL TEE/WYE CONNECTION
NOT TO SCALE

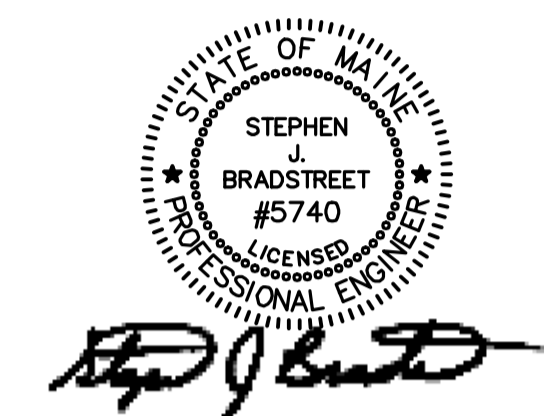
- NOTES:
- CONCRETE: 5,000 PSI AFTER 28 DAYS.
 - JOINTS TO BE SEALED WITH CONSEAL CS102 JOINT SEALANT.
 - KNOCKOUTS EXTEND 6" INTO THE WALL WITH SIDES SLOPED @ 45° FORMING A BELL TYPE OPENING. KNOCKOUTS SHOULD BE CLEAR OF ANY REINFORCING.
 - REINFORCING: DESIGNED FOR H-20 LOADING.
 - HATCH AND GALVANIZED GRATING PROVIDED BY OTHERS.
 - VAULT SHALL BE DESIGNED TO WITHSTAND H-20 WHEEL LOADING WITH 6 INCHES OF OVERBURDEN. THE DESIGN SHALL ALSO COMPLY WITH THE STRENGTH REQUIREMENTS OF NATIONAL ELECTRICAL SAFETY CODE SECTION 323A. PROVIDE SHOP DRAWINGS STAMPED BY A STATE OF MAINE REGISTERED PROFESSIONAL ENGINEER UPON REQUEST.
 - JOINTS SEALED WITH ASPHALT.
 - MOUNTINGS FOR CABLE HOOKS, ETC. CAST IN WALL BY FURTHER PLANE OR FIELD LOCATED.
 - MANHOLE SHALL BE SET ON A SUITABLE GRAVEL BASE.
 - CABLES ARE TO BE RACKED ALONG ONE WALL ONLY.

CASTING WEIGHTS:
BASE: 16,850 LBS.
BARREL: 8,980 LBS.
COVER: 6,750 LBS.

WEIGHTS SHOWN DO NOT INCLUDE LIFTING GEAR.

Site:
**PROPOSED AC HOTEL
PORTLAND**
FORE STREET /
HANCOCK STREET /
THAMES STREET
PORTLAND, MAINE

Prepared for:
PORTLAND NORWICH GROUP, LLC.
2330 PALM RIDGE ROAD #305
SANIBEL, FLORIDA 33957



CIVIL ENGINEER:
STEPHEN J. BRADSTREET, PE #5740
400 COMMERCIAL STREET, SUITE 404
PORTLAND, ME 04101
207-772-2891

RANSOM
Consulting
Engineers
and Scientists
400 Commercial Street, Suite 404
Portland, ME 04101
Tel. (207) 772-2891
Fax (207) 772-3248
www.ransomem.com

**CONSTRUCTION
DETAILS**

No.	Revision/Issue	Date
D	APPROVED CITY PLAN	02/15/17
C	FINAL SUBMISSION	03/15/16
B	PRELIMINARY SUBMISSION	09/29/15
A	CLIENT REVIEW	09/15/15

Design by: MPV
Checked by: SUB
Drawn by: JVB
Approved by: JVB
Project: 150.06094
Date: AUGUST 2015



DATE of APPROVAL: 02/15
PLANNER: Neil Donaldson
PROJECT NO.: 2015-169