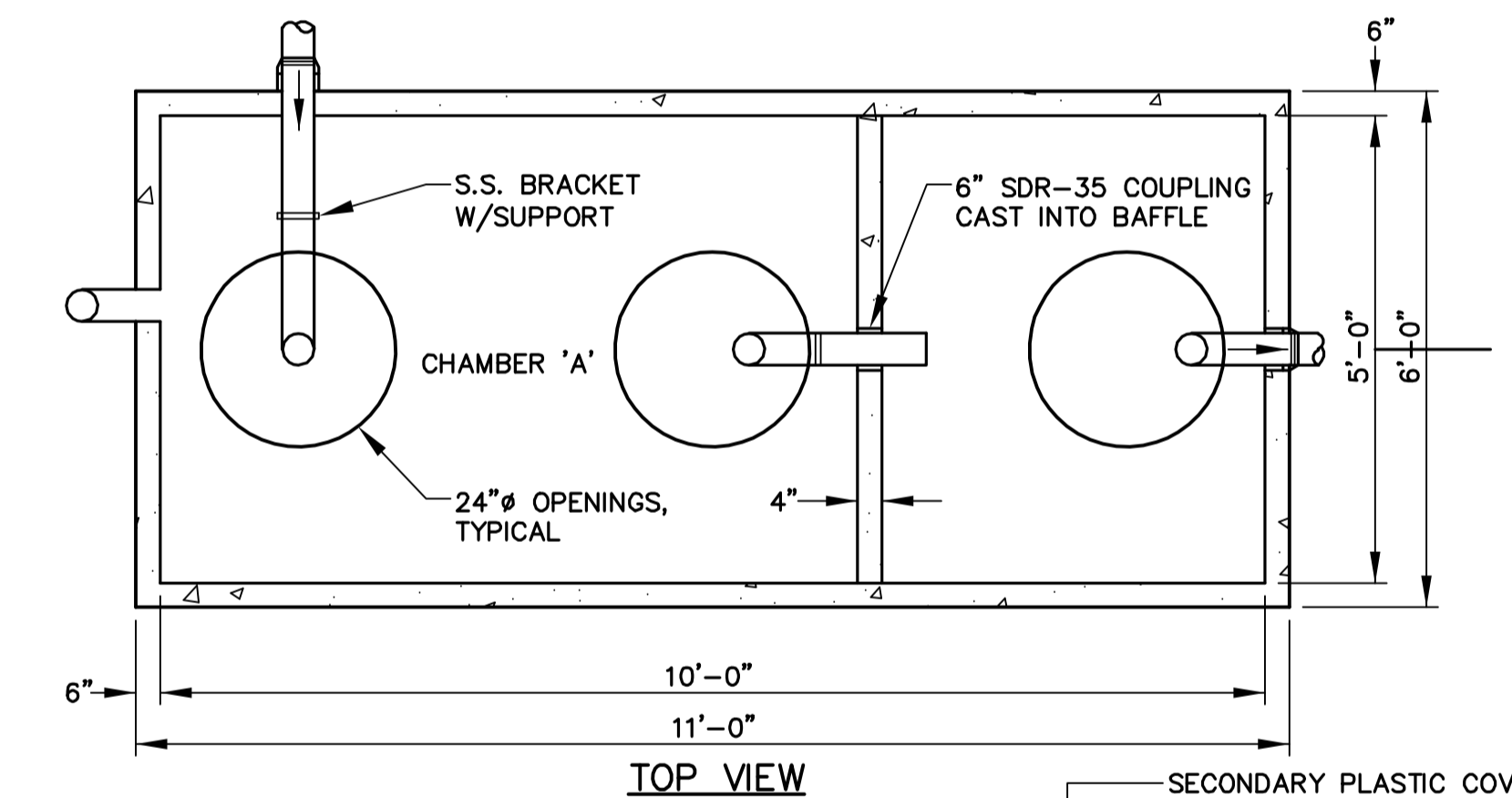
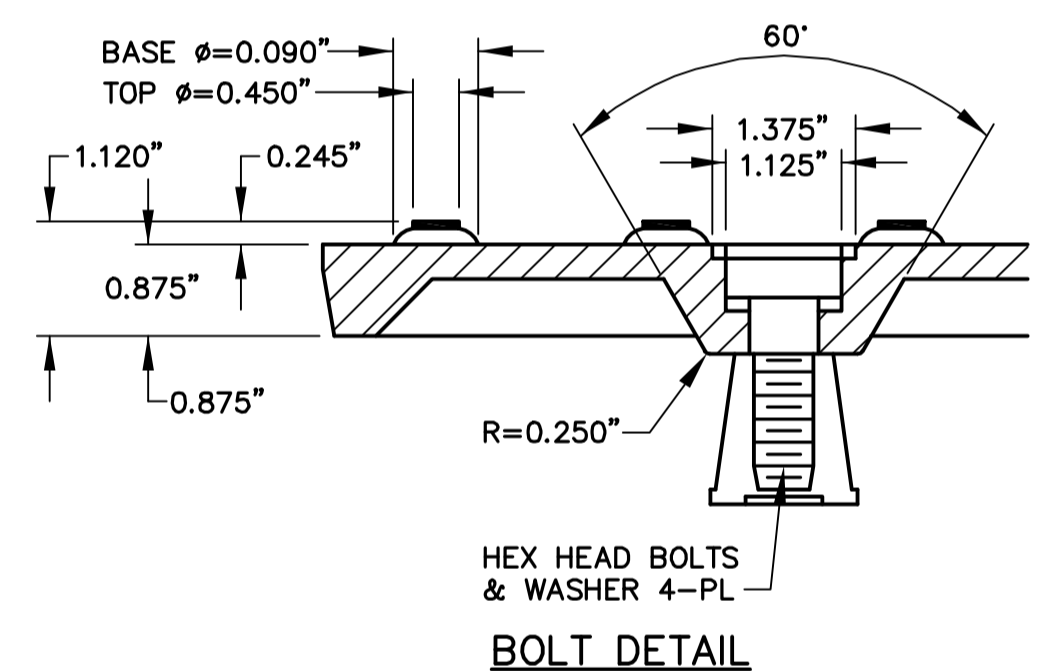


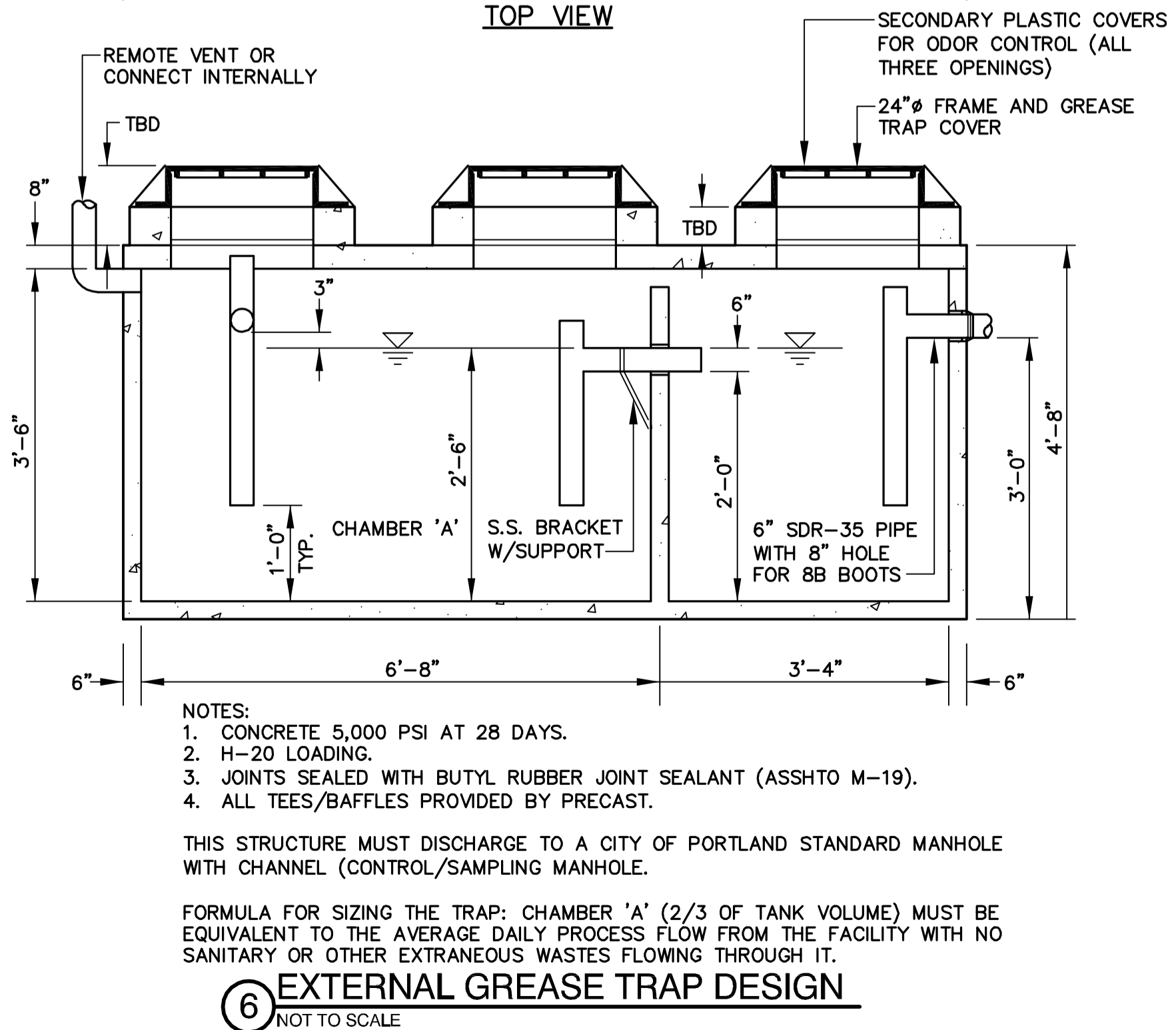
- NOTES:
1. COMPOSITE WET SAND (REPLACEABLE) DETECTABLE WARNING PANELS SHALL BE AS MANUFACTURED BY ADA SOLUTIONS, INC. (WWW.ADATILE.COM) OR APPROVED EQUAL.
 2. CAST IN PLACE CONCRETE SHALL MEET SPECIFICATIONS FOR MAINE D.O.T. CLASS A STRUCTURAL CONCRETE, MINIMUM COMPRESSIVE STRENGTH 4,000 PSI. THE CONCRETE SHALL BE SEALED PRIOR TO SETTING PANELS. THE EXPOSED CONCRETE BORDER SHALL RECEIVE A GROOVED EDGE BETWEEN THE PANEL AND CONCRETE, ALONG WITH A UNIFORM BROOM FINISH PERPENDICULAR TO THE FLOW OF PEDESTRIAN TRAFFIC.
 3. TRUNCATED DOMES SHALL BE ALIGNED IN ROWS PARALLEL AND PERPENDICULAR TO THE PREDOMINANT DIRECTION OF TRAVEL. TRUNCATED DOME BRICKS AND GRANITE PAVERS ARE NOT ALLOWED.
 4. FOR ALL DETECTABLE WARNING PANELS (EXCEPT AS SPECIFIED IN FIGURE 1-7A AND TECHNICAL MANUAL SECTION 1.8.4), FEDERAL YELLOW COLORED (#3353B) PANELS SHALL BE USED. FOLLOW MANUFACTURER'S INSTRUCTIONS FOR INSTALLATION.
 5. SIZE: THE DETECTABLE WARNING PANEL(S) SHALL EXTEND 24 INCHES MINIMUM IN THE DIRECTION OF TRAVEL AND THE FULL WIDTH OF THE CURB RAMP, LANDING, OR BLENDED TRANSITION TO THE STREET.
 6. ORIENTATION: THE DETECTABLE WARNING PANEL SHALL BE LOCATED SO THAT THE EDGE NEAREST THE CURB LINE IS 6 INCHES MINIMUM AND 8 INCHES MAXIMUM FROM THE CURB LINE. THE PANEL SHALL BE ORIENTED TO THE DIRECTION OF TRAVEL AS IDENTIFIED BY THE POINT OF EGRESS.



PIPE INSTALLATION NOTES

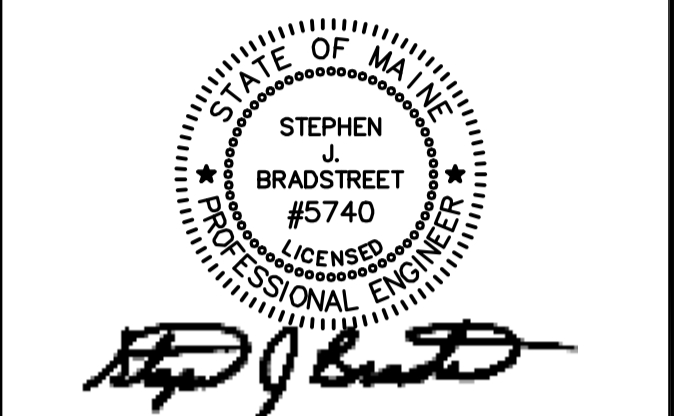
1. ALTERNATE CONSTRUCTION METHODS OR PAYMENT METHODS SHALL BE APPROVED BY THE CITY.
2. IN PAVED AREAS, DEPTHS OF GRAVEL AND HOT MIX ASPHALT PAVEMENT SHALL MATCH THE GREATER OF EXISTING CONDITIONS OR THE REQUIREMENTS FOR THE CORRESPONDING STREET CLASSIFICATION.
3. DIMENSION B SHALL BE SUFFICIENT TO ALLOW CRUSHED STONE BEDDING TO BE PLACED AND COMPACTED UNDER THE HAUNCHES OF THE PIPE; BUT IN ALL CASES DIMENSION B SHALL BE AT LEAST 9". DIMENSION A IS THE MAXIMUM WIDTH ALLOWED FOR CALCULATING PAY QUANTITIES UNDER GRANULAR BORROW, CRUSHED STONE, STRUCTURAL EARTH EXCAVATION, AND STRUCTURAL ROCK EXCAVATION. DIMENSION A SHALL BE BASED ON PIPE DIAMETER D, AS SET FORTH IN THE FOLLOWING TABLE:

PIPE DIAMETER, D (INCHES)	MAX. TRENCH WIDTH, A (FEET)
4	4.0
6	4.0
8	4.0
10	4.0
12	5.0
15	5.0
18	5.0
21	5.0
24	6.0
27	6.0
30	6.0
36	6.0
42	7.0
48	7.0



Site: **PROPOSED AC HOTEL PORTLAND**
 FORE STREET / HANCOCK STREET / THAMES STREET
 PORTLAND, MAINE

Prepared for: **PORTLAND NORWICH GROUP, LLC.**
 2330 PALM RIDGE ROAD #305
 SANIBEL, FLORIDA 33957



CIVIL ENGINEER:
STEPHEN J. BRADSTREET, PE #5740
 400 COMMERCIAL STREET, SUITE 404
 PORTLAND, ME 04101
 207-772-2891



CONSTRUCTION DETAILS

No.	Revision/Issue	Date
E	APPROVED CITY PLAN	02/15/17
D	RESPONSE TO COMMENTS	05/10/16
C	FINAL SUBMISSION	03/15/16
B	PRELIMINARY SUBMISSION	09/29/15
A	CLIENT REVIEW	09/15/15

Design by: **MPM** Checked by: **SJB**
 Drawn by: **CITY OF PORTLAND** Approved by: **APPROVED SITE PLAN**
 Project: **150.06094** Subject to Conditions of Approval and Standard Conditions
 Date: **AUGUST 2015**
 Sheet No:

DATE of APPROVAL: **02/15/17**
 PLANNER: **Nell Donaldson**
 PROJECT NO.: **2015-169**