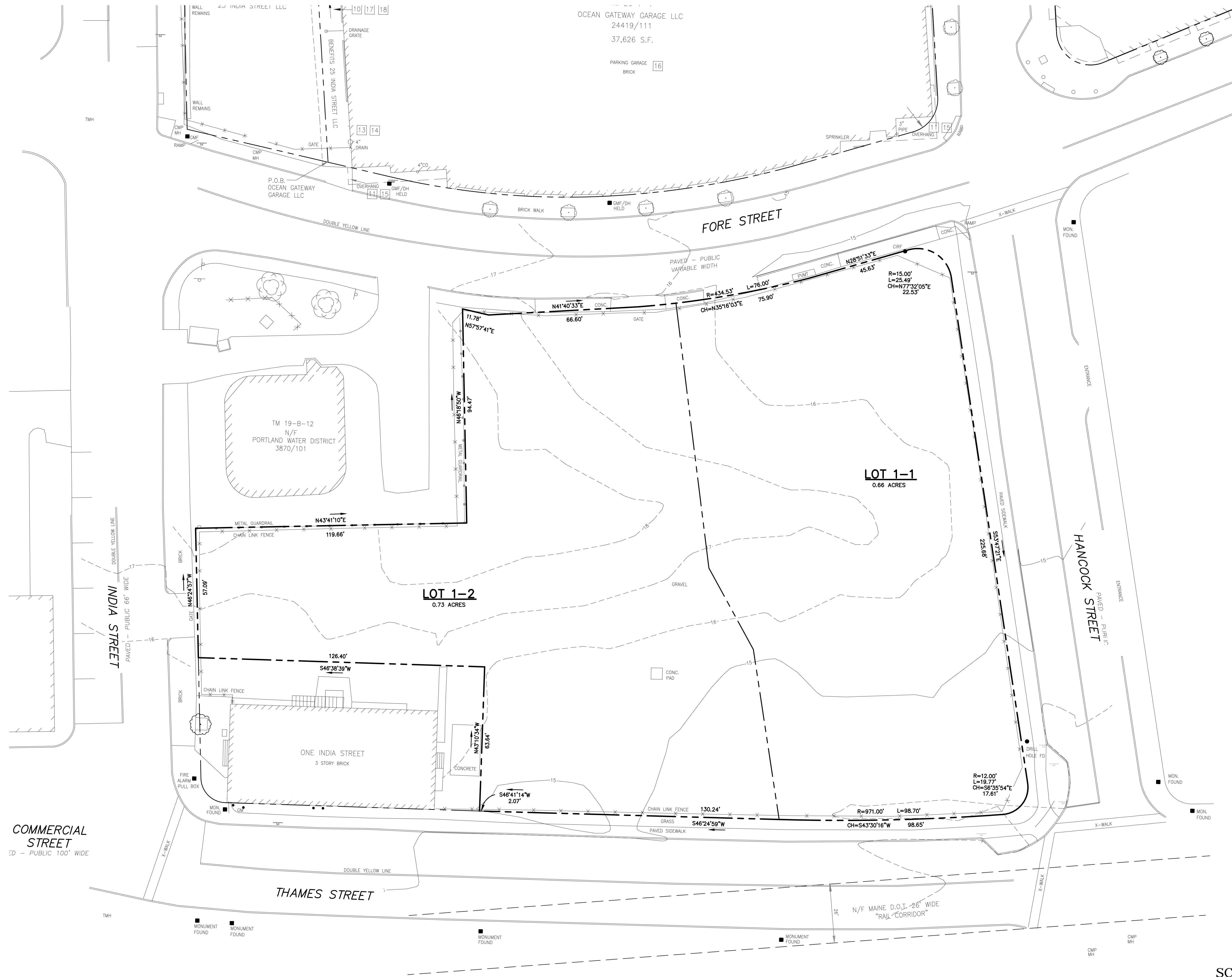
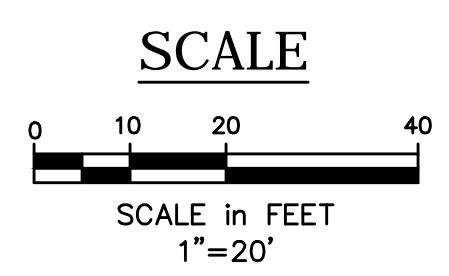




NORTH



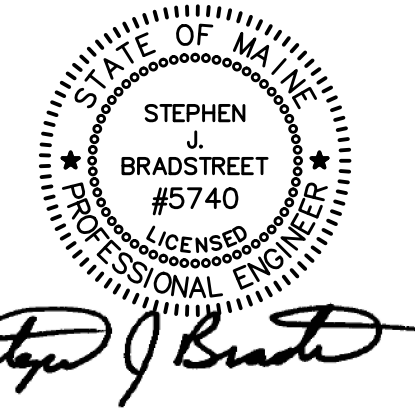
COMMERCIAL STREET
66' - PUBLIC 100' WIDE



PROPOSED AC HOTEL

FORE STREET /
HANCOCK STREET /
THAMES STREET
PORTLAND, MAINE

Prepared for:
PORTLAND NORWICH
GROUP, LLC
2330 PALM RIDGE ROAD
#305
SANIBEL, FL 33957



CIVIL ENGINEER:
STEPHEN J. BRADSTREET, PE #5740
400 COMMERCIAL STREET, SUITE 404
PORTLAND, ME 04101
207-772-2891



400 Commercial Street, Suite 404
Portland, ME 04101
Tel. (207) 772-2891
Fax (207) 772-3248
www.ransomenv.com

SUBDIVISION PLAN

A	PRELIMINARY SUBMISSION	09/29/15
No.	Revision/Issue	Date
Design by:	MPM	Checked by: SJB
Drawn by:	JAR	Approved by: SJB
Project:	150.06094	Date: AUGUST 2015
Sheet No:	C0.2	
	Sheet 4 of 13	