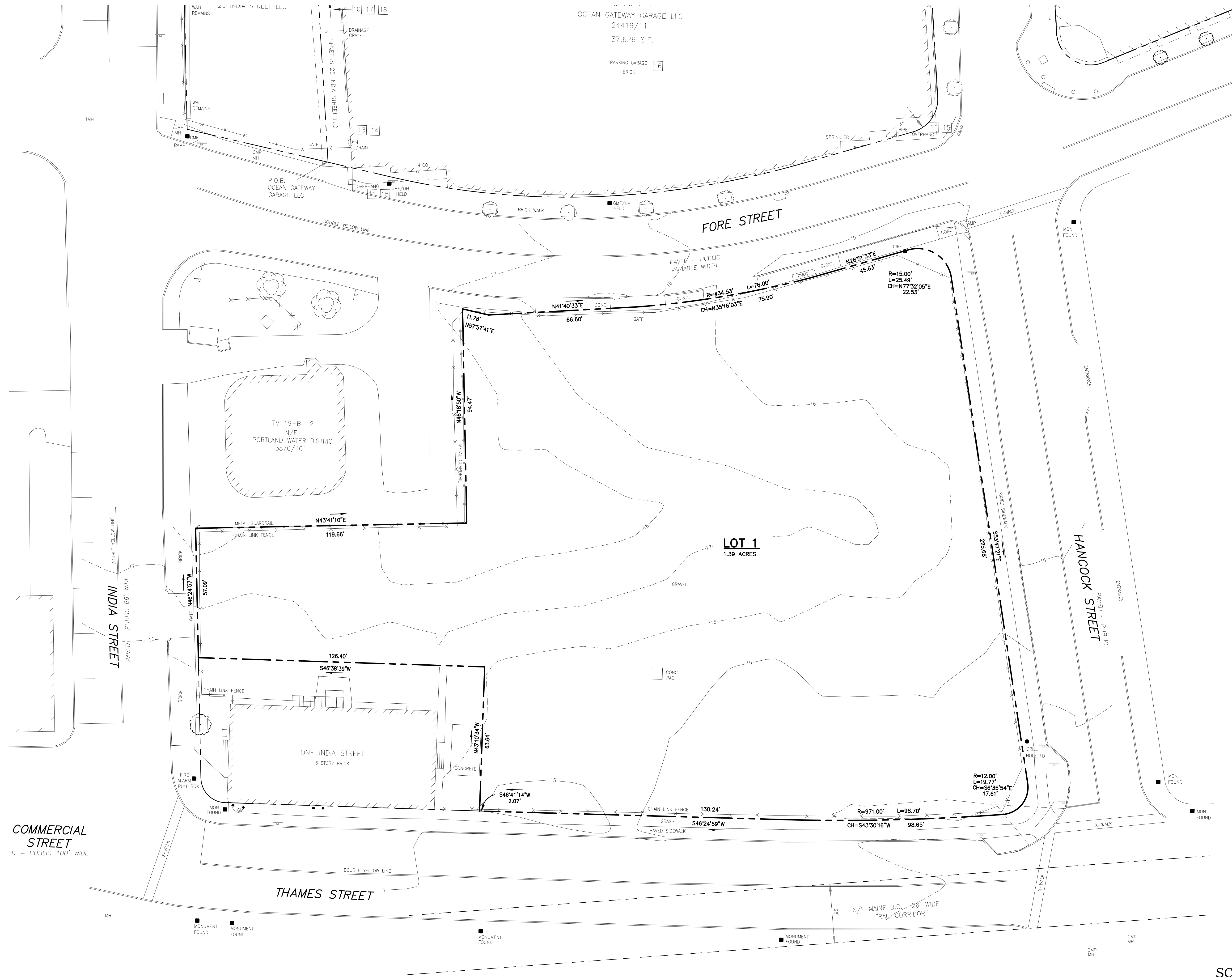




NORTH



COMMERCIAL STREET
 10' - PUBLIC 100' WIDE

INDIA STREET
 66' WIDE
 PUBLIC

THAMES STREET

FORE STREET

HANCOCK STREET

LOT 1
 1.39 ACRES

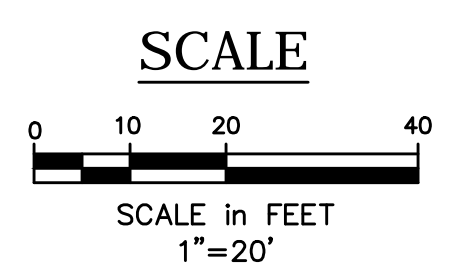
OCEAN GATEWAY GARAGE LLC
 24419/111
 37,626 S.F.

PARKING GARAGE
 BRICK

TM 19-B-12
 N/F
 PORTLAND WATER DISTRICT
 3870/101

ONE INDIA STREET
 3 STORY BRICK

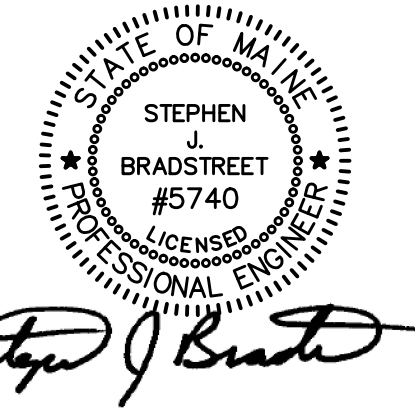
N/F MAINE D.O.J. - 26' WIDE
 "RAIL CORRIDOR"



PROPOSED AC HOTEL

FORE STREET /
 HANCOCK STREET /
 THAMES STREET
 PORTLAND, MAINE

Prepared for:
 PORTLAND NORWICH
 GROUP, LLC
 2330 PALM RIDGE ROAD
 #305
 SANIBEL, FL 33957



CIVIL ENGINEER:
 STEPHEN J. BRADSTREET, PE #5740
 400 COMMERCIAL STREET, SUITE 404
 PORTLAND, ME 04101
 207-772-2891



400 Commercial Street, Suite 404
 Portland, ME 04101
 Tel. (207) 772-2891
 Fax (207) 772-3248
 www.ransomenv.com

EXISTING
 CONDITIONS PLAN

B	PRELIMINARY SUBMISSION	09/29/15
A	CLIENT REVIEW	09/15/15
No.	Revision/Issue	Date
Design by:	MPM	Checked by: SJB
Drawn by:	JAR	Approved by: SJB
Project:	150.06094	Date: AUGUST 2015
Sheet No:	C0.1	
	Sheet 3 of 13	