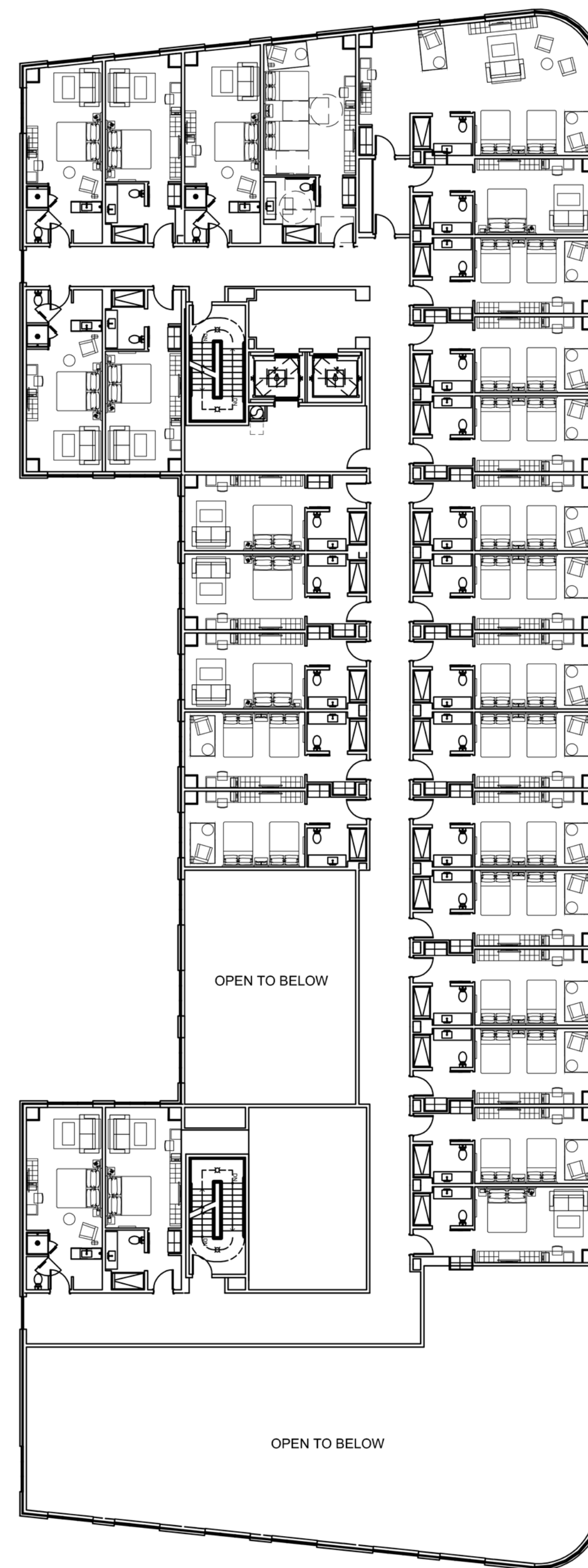
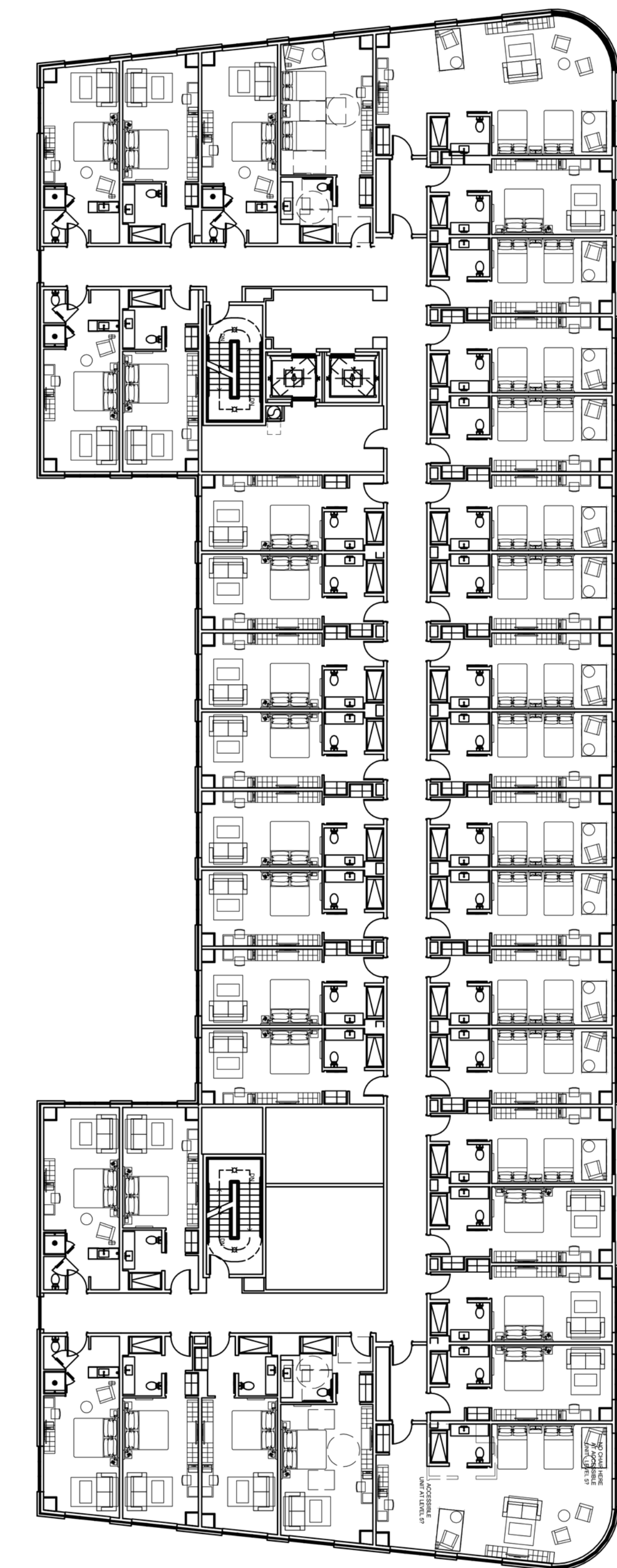


GROUND FLOOR PLAN
1/16"=1'-0"



SECOND FLOOR PLAN
1/16"=1'-0"



TYPICAL FLOOR PLAN (3-6)

ROOM MATRIX									
AC Hotel - Portland, Maine									
UNIT TYPE	Ground FLOOR	2nd FLOOR	3rd FLOOR	4th FLOOR	5th FLOOR	6th FLOOR	TOTAL	Allocation of Types	Accessible Rooms
KING STUDIO	0	11	19	19	19	19	87	48%	4
KING METRO	0	3	4	4	4	4	19	10%	0
QUEEN-QUEEN STUDIO	0	13	13	13	13	13	65	37%	5
QUEEN-QUEEN SUITE	0	1	2	2	2	2	9	5%	1
TOTAL	0	28	38	38	38	38	180	--	10
AREA	19,403	14,204	18,154	18,154	18,154	18,154	106,223		

Project No.1200 MAY 9, 2016

SCALE: 1/16" = 1'-0"

Proposed Hotel
Fore Street / Hancock Street / Thames Street
Portland, ME

FLOOR PLANS