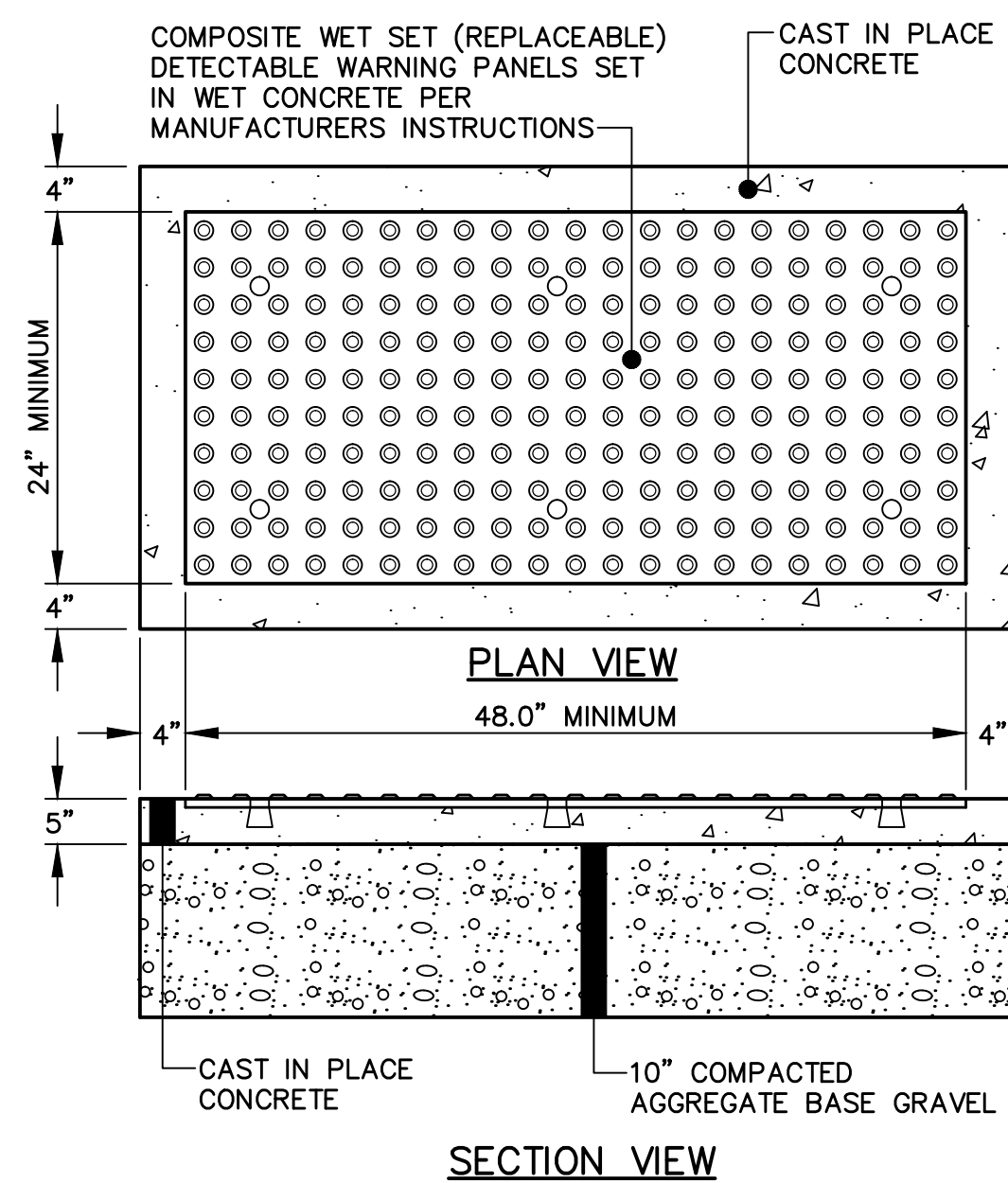
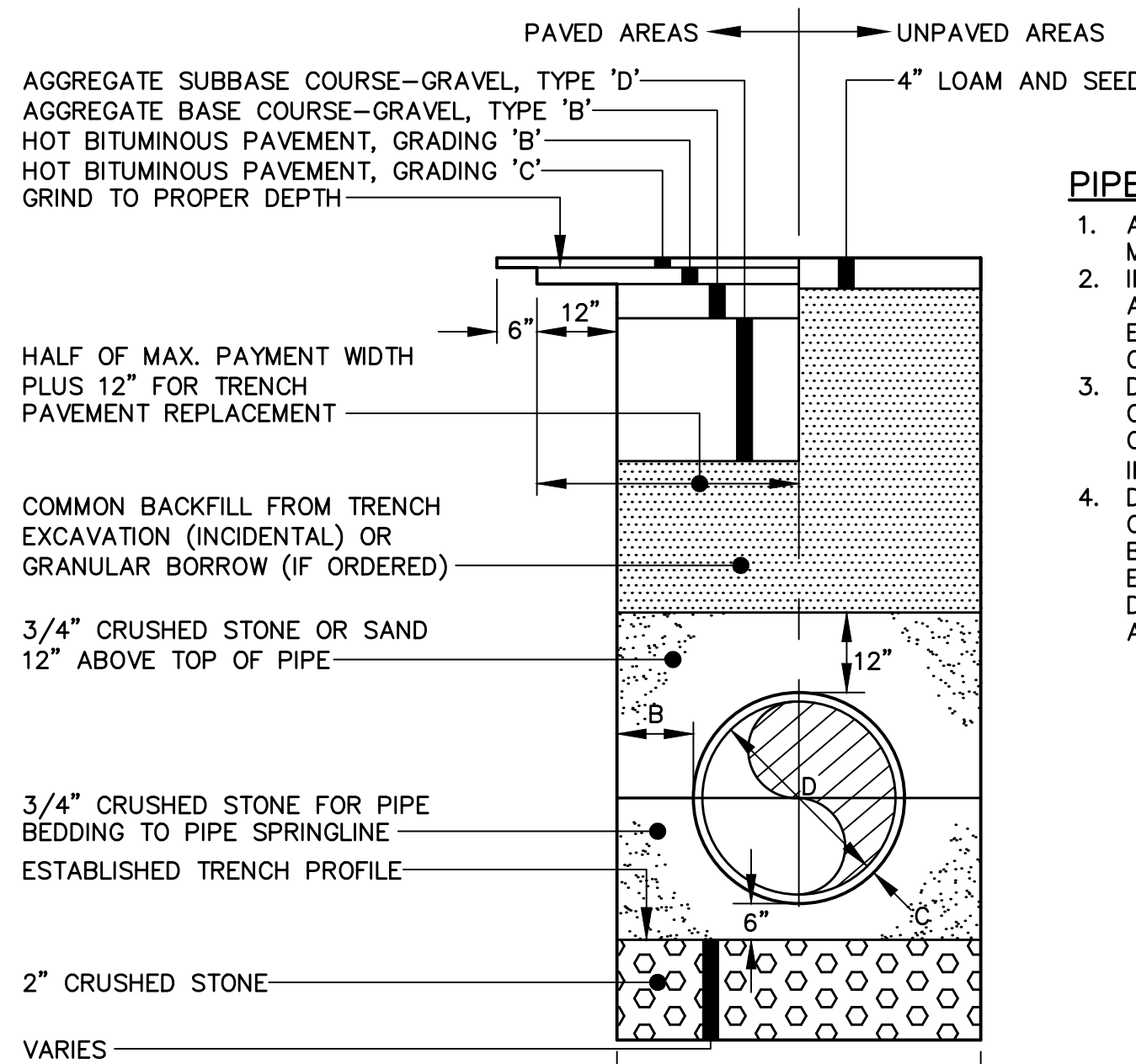


1 FLARED RAMP DETAIL
NOT TO SCALE



4 SIDEWALK RAMP DETECTABLE WARNING PANEL
NOT TO SCALE

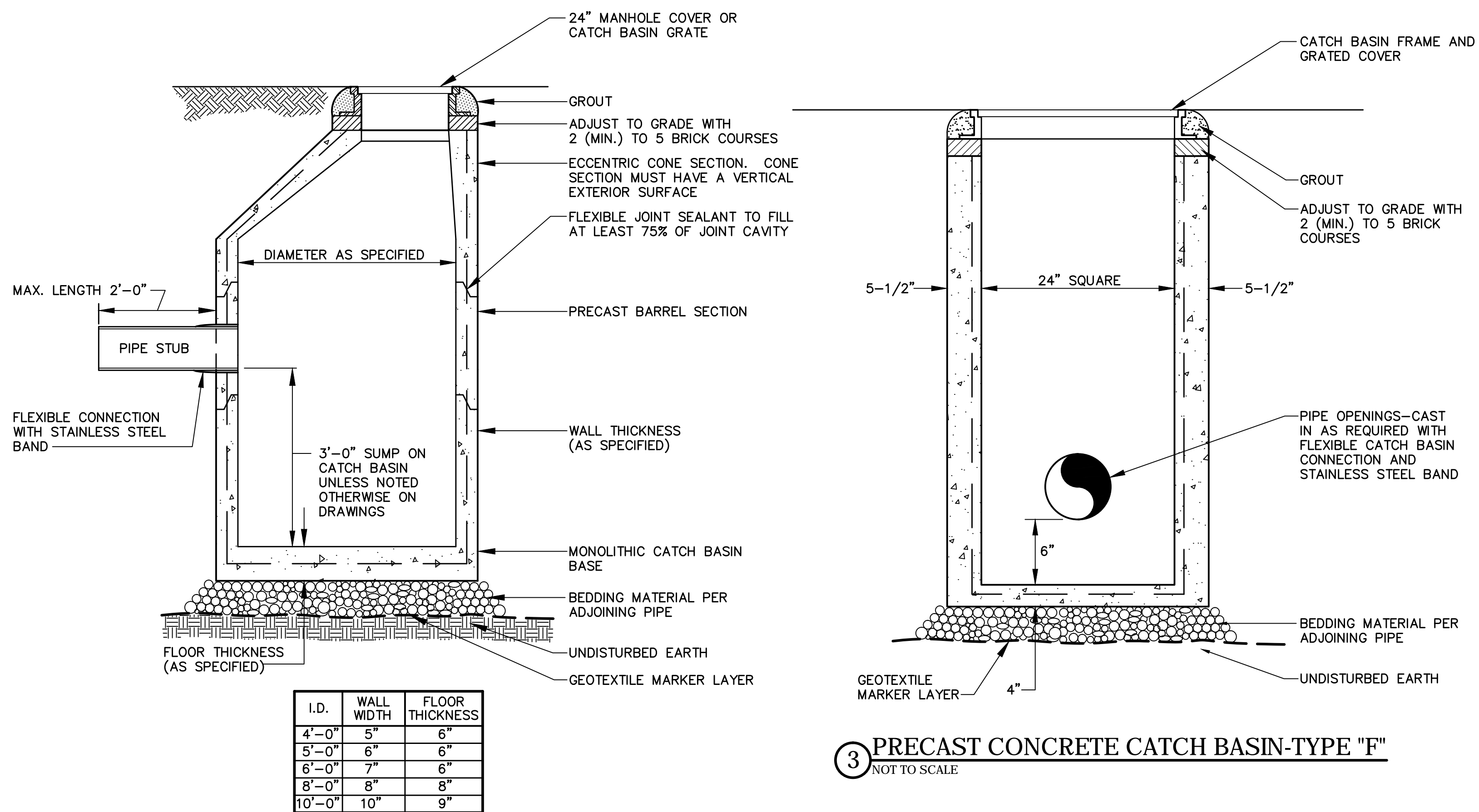


5 TYPICAL PIPE TRENCH INSTALLATION
(WITHIN CITY RIGHT-OF-WAY)
NOT TO SCALE

PIPE INSTALLATION NOTES

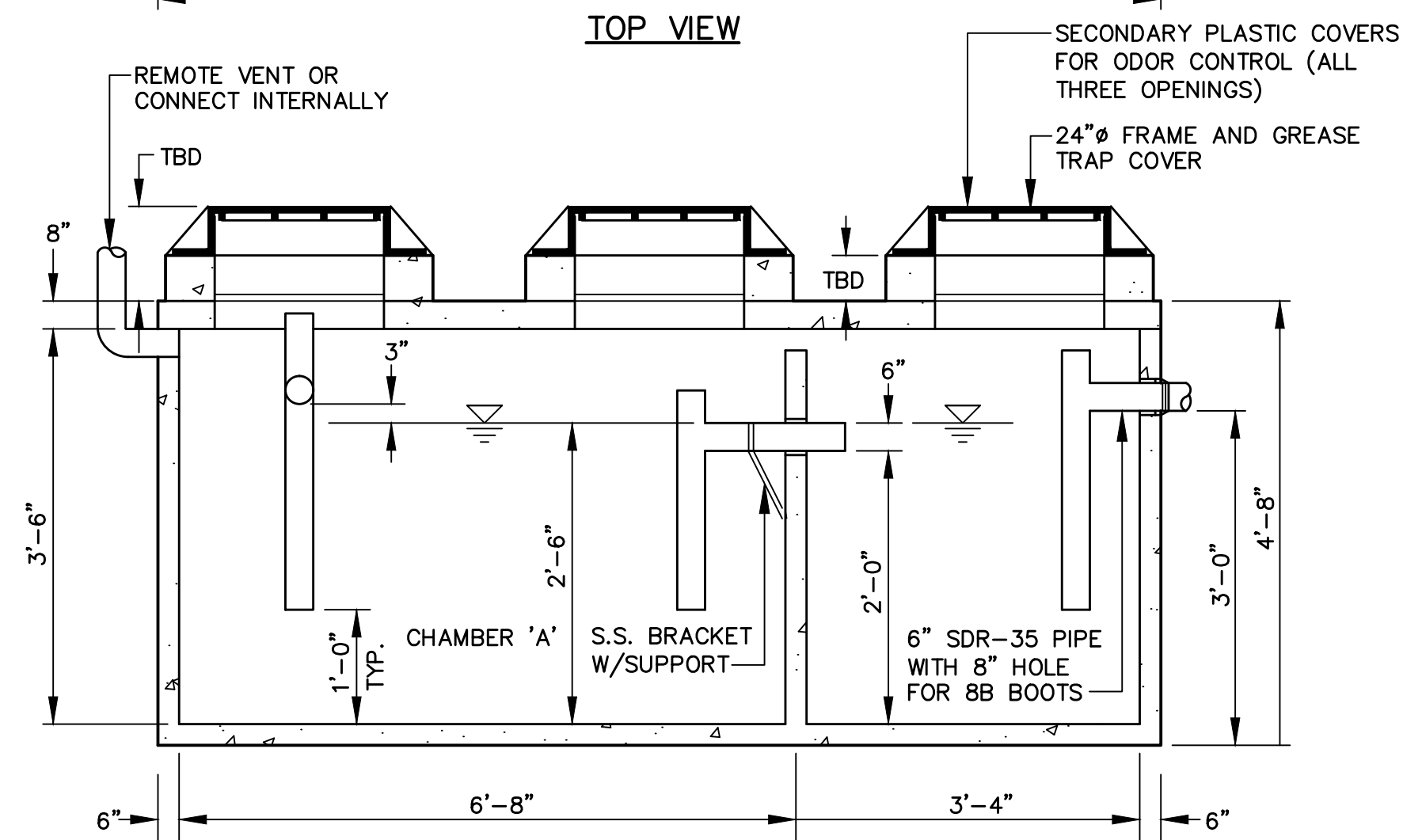
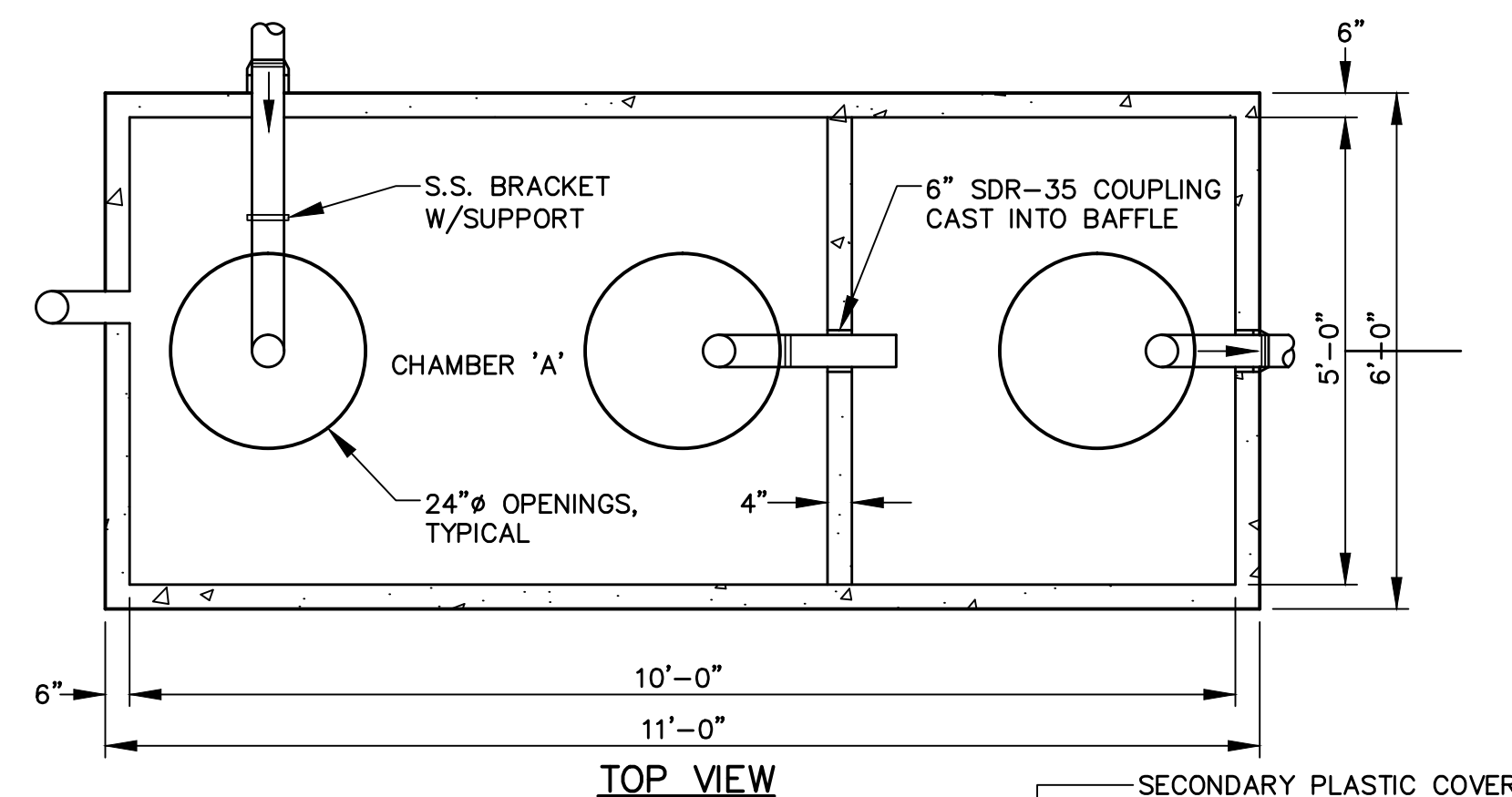
- ALTERNATE CONSTRUCTION METHODS OR PAYMENT METHODS SHALL BE APPROVED BY THE CITY.
- IN PAVED AREAS, DEPTHS OF GRAVEL AND HOT MIX ASPHALT PAVEMENT SHALL MATCH THE GREATER OF EXISTING CONDITIONS OR THE REQUIREMENTS FOR THE CORRESPONDING STREET CLASSIFICATION.
- DIMENSION B SHALL BE SUFFICIENT TO ALLOW CRUSHED STONE BEDDING TO BE PLACED AND COMPACTED UNDER THE HAUNCHES OF THE PIPE; BUT IN ALL CASES DIMENSION B SHALL BE AT LEAST 9". DIMENSION A IS THE MAXIMUM WIDTH ALLOWED FOR CALCULATING PAY QUANTITIES UNDER GRANULAR BORROW, CRUSHED STONE, STRUCTURAL EARTH EXCAVATION, AND STRUCTURAL ROCK EXCAVATION. DIMENSION A SHALL BE BASED ON PIPE DIAMETER D, AS SET FORTH IN THE FOLLOWING TABLE:

PIPE DIAMETER, D (INCHES)	MAX. TRENCH WIDTH, A (FEET)
4	4.0
6	4.0
8	4.0
10	4.0
12	5.0
15	5.0
18	5.0
21	5.0
24	6.0
27	6.0
30	6.0
36	6.0
42	7.0
48	7.0



2 PRECAST CONCRETE MANHOLE
NOT TO SCALE

3 PRECAST CONCRETE CATCH BASIN-TYPE "F"
NOT TO SCALE



- NOTES:
- CONCRETE 5,000 PSI AT 28 DAYS.
 - H-20 LOADING.
 - JOINTS SEALED WITH BUTYL RUBBER JOINT SEALANT (ASSHTO M-19).
 - ALL TEES/Baffles PROVIDED BY PRECAST.

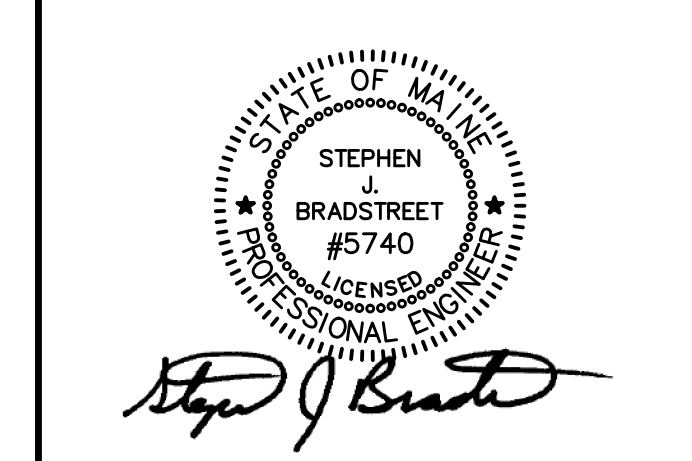
THIS STRUCTURE MUST DISCHARGE TO A CITY OF PORTLAND STANDARD MANHOLE WITH CHANNEL (CONTROL/SAMPLING MANHOLE).

FORMULA FOR SIZING THE TRAP: CHAMBER 'A' (2/3 OF TANK VOLUME) MUST BE EQUIVALENT TO THE AVERAGE DAILY PROCESS FLOW FROM THE FACILITY WITH NO SANITARY OR OTHER EXTRANEIOUS WASTES FLOWING THROUGH IT.

6 EXTERNAL GREASE TRAP DESIGN
NOT TO SCALE

Site: **PROPOSED AC HOTEL PORTLAND**
FORE STREET / HANCOCK STREET / THAMES STREET
PORTLAND, MAINE

Prepared for:
PORTLAND NORWICH GROUP, LLC.
2330 PALM RIDGE ROAD #305
SANIBEL, FLORIDA 33957



CIVIL ENGINEER:
STEPHEN J. BRADSTREET, PE #5740
400 COMMERCIAL STREET, SUITE 404
PORTLAND, ME 04101
207-772-2891

PRELIMINARY NOT FOR CONSTRUCTION

RANSOM
Consulting Engineers and Scientists
400 Commercial Street, Suite 404
Portland, ME 04101
Tel. (207) 772-2891
Fax (207) 772-3248
www.ransomenv.com

CONSTRUCTION DETAILS

D	RESPONSE TO COMMENTS	05/10/16
C	FINAL SUBMISSION	03/15/16
B	PRELIMINARY SUBMISSION	09/29/15
A	CLIENT REVIEW	09/15/15

No.	Revision/Issue	Date
Design by:	MPM	Checked by: SJB
Drawn by:	JAR	Approved by: SJB
Project:	150.06094	Date: AUGUST 2015
Sheet No:	C2.2	
	Sheet 9 of 17	