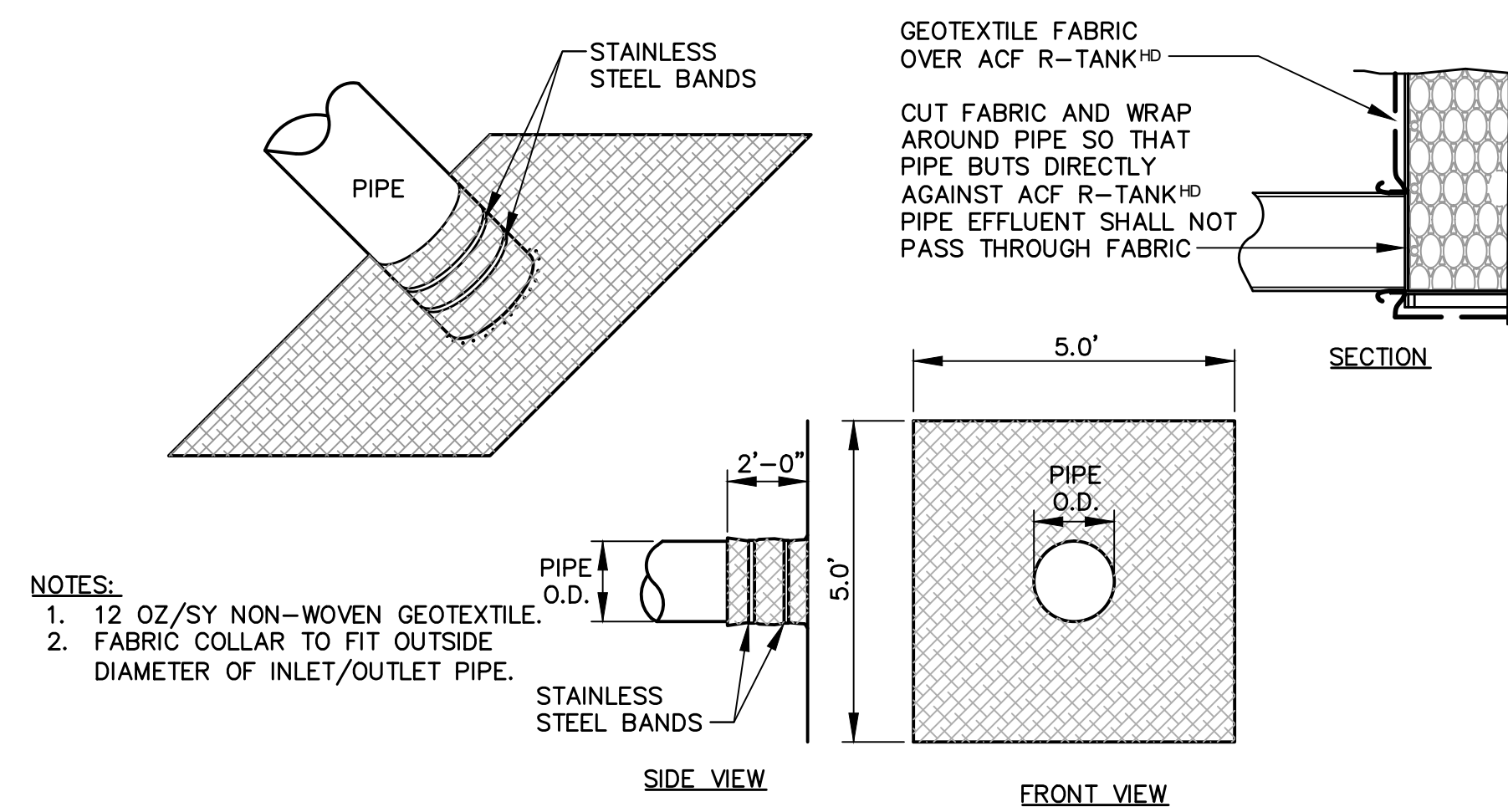


MODULE DATA

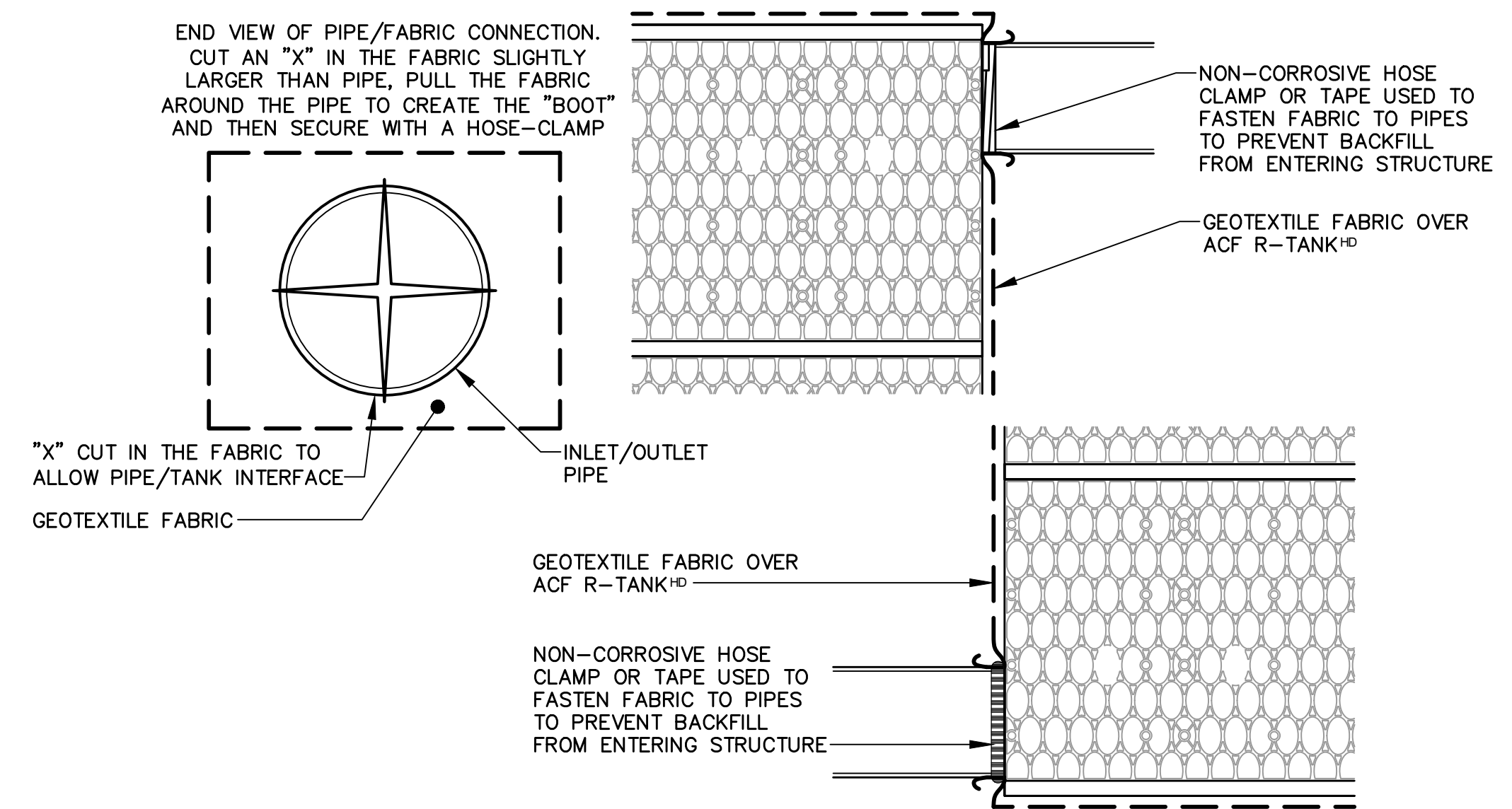
GEOMETRY: LENGTH = 28.15 IN. (715 MM)	LOAD RATING: 40 PSI, (MODULE ONLY)
WIDTH = 15.75 IN. (400 MM)	HS25, (WITH ACF COVER SYSTEM)
HEIGHT = 17.32 IN. (440 MM)	
STORAGE VOLUME = 4.22 CF (119 L)	MATERIAL: 85% RECYCLED POLYPROPYLENE
VOID INTERNAL VOLUME: 95%	
VOID SURFACE AREA: 90%	

1 R-TANK^{HD} - SINGLE MODULE DETAIL
NOT TO SCALE



- NOTES:
- 12 OZ/SY NON-WOVEN GEOTEXTILE.
 - FABRIC COLLAR TO FIT OUTSIDE DIAMETER OF INLET/OUTLET PIPE.

2 FABRIC PIPE BOOT FOR R-TANK^{HD}
NOT TO SCALE

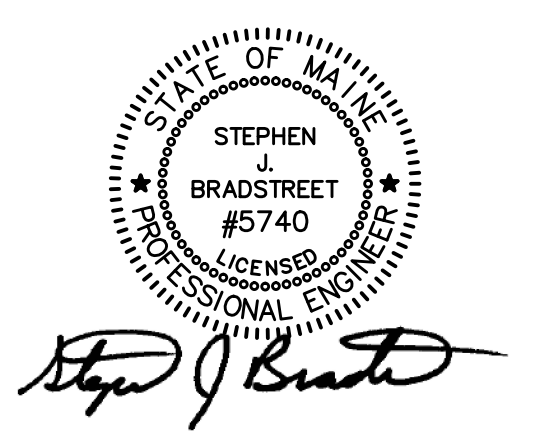


3 R-TANK^{HD} TYPICAL TANK INLET/OUTLET
NOT TO SCALE

PRELIMINARY NOT FOR CONSTRUCTION

Site:
**PROPOSED AC HOTEL
PORTLAND**
FORE STREET /
HANCOCK STREET /
THAMES STREET
PORTLAND, MAINE

Prepared for:
PORTLAND NORWICH GROUP, LLC.
2330 PALM RIDGE ROAD #305
SANIBEL, FLORIDA 33957



CIVIL ENGINEER:
STEPHEN J. BRADSTREET, PE #5740
400 COMMERCIAL STREET, SUITE 404
PORTLAND, ME 04101
207-772-2891

RANSOM
Consulting
Engineers
and Scientists
400 Commercial Street, Suite 404
Portland, ME 04101
Tel. (207) 772-2891
Fax (207) 772-3248
www.ransomenv.com

**CONSTRUCTION
DETAILS**

C	FINAL SUBMISSION	03/15/16
B	PRELIMINARY SUBMISSION	09/29/15
A	CLIENT REVIEW	09/15/15
No.	Revision/Issue	Date
Design by:	MPM	Checked by: SJB
Drawn by:	JAR	Approved by: SJB
Project:	150.06094	Date: AUGUST 2015

Sheet No: **C2.5**
Sheet 12 of 17