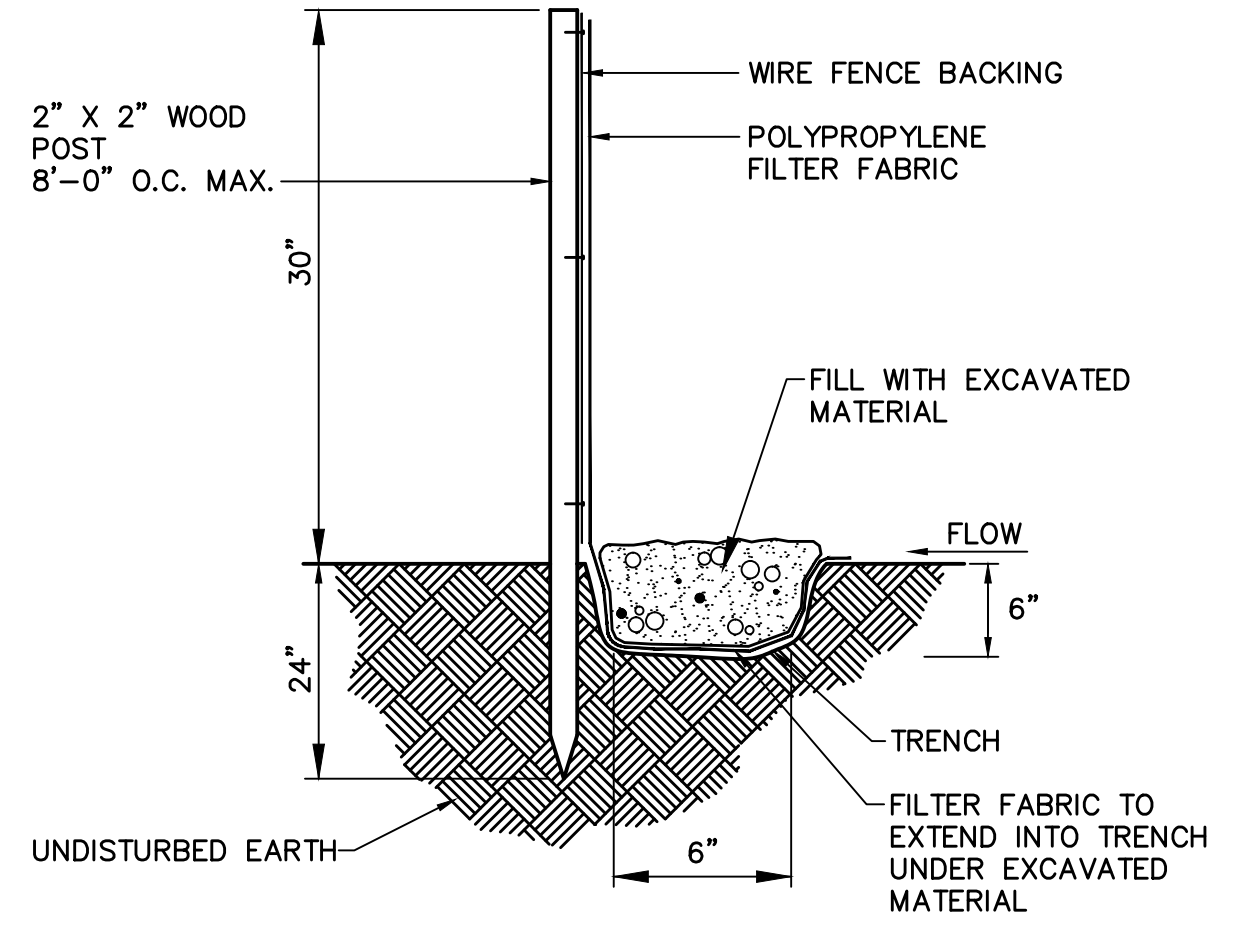
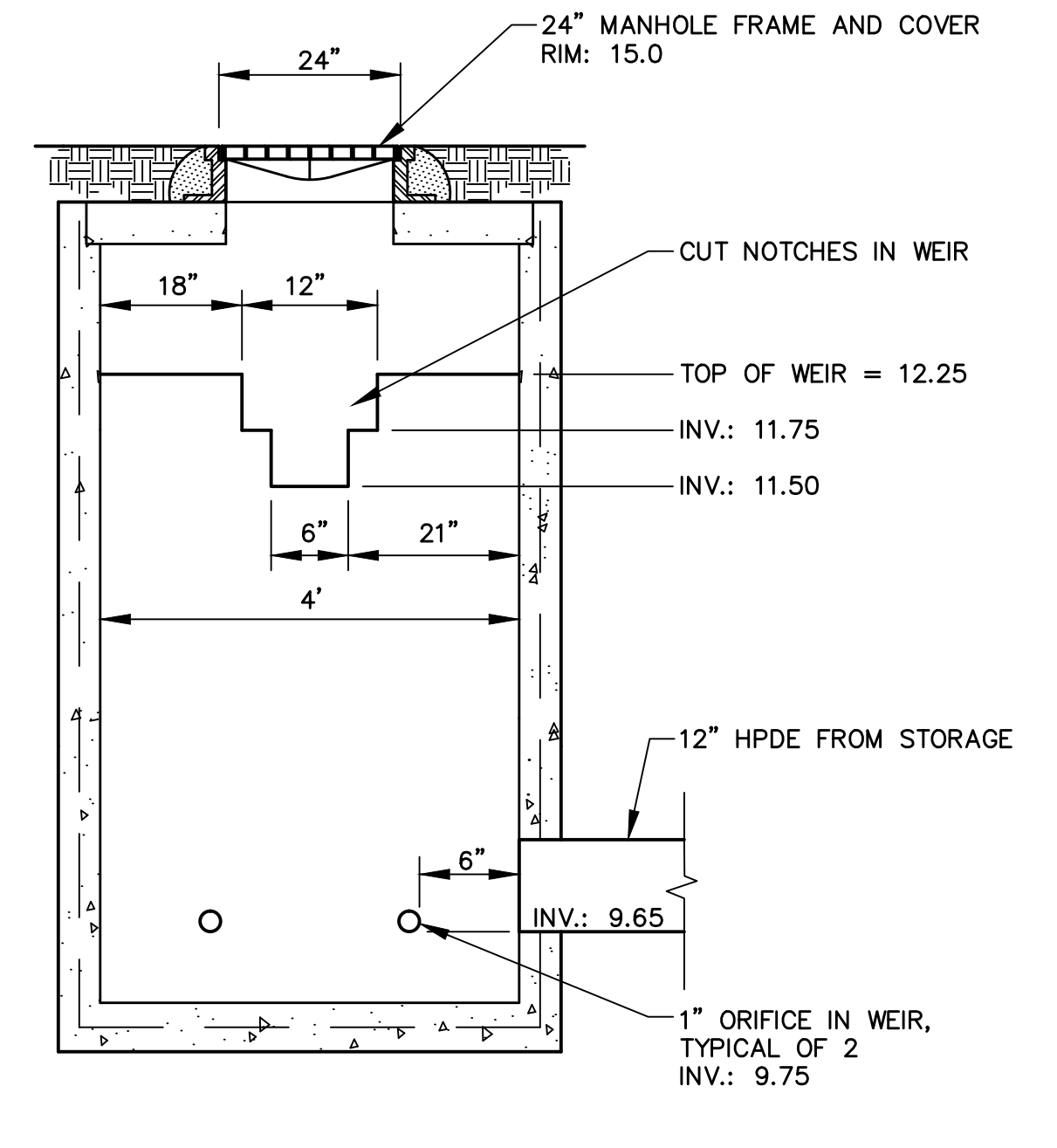


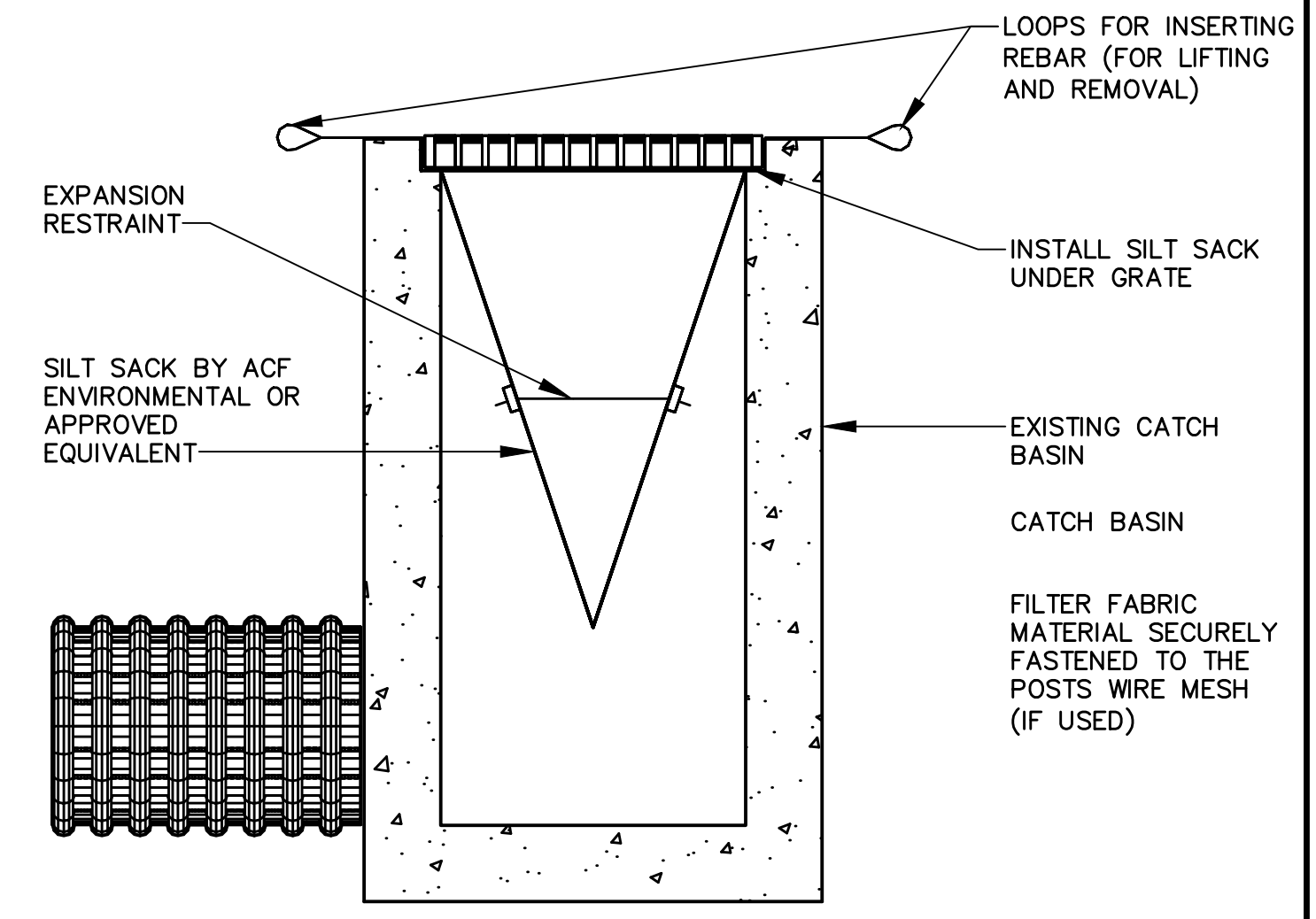
1 STABILIZED CONSTRUCTION ENTRANCE
NOT TO SCALE



2 EROSION CONTROL FENCE DETAIL
NOT TO SCALE

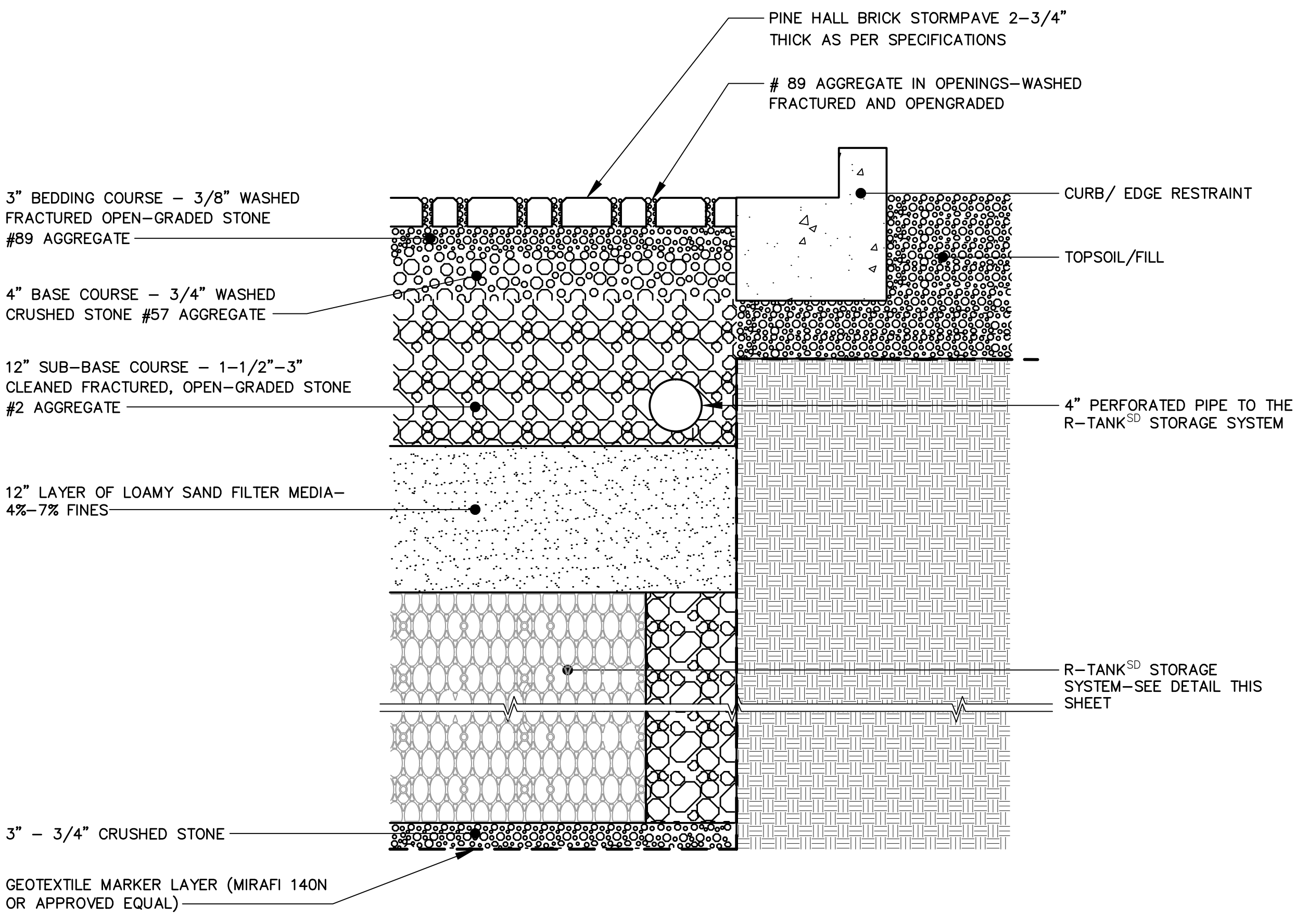


3 OUTLET CONTROL STRUCTURE
NOT TO SCALE

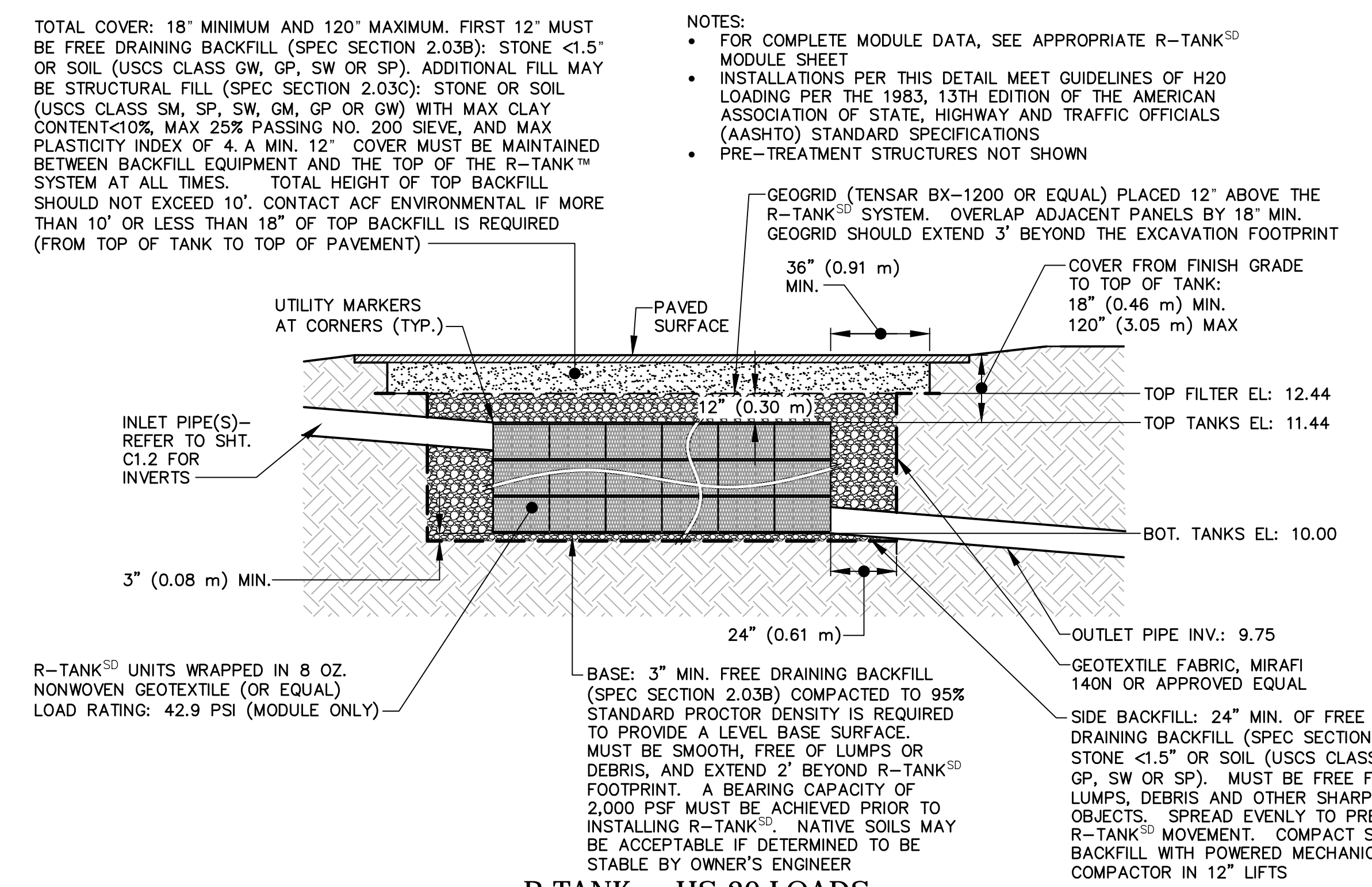


- NOTES:
1. INSTALL SILTSACK PER MANUFACTURER'S RECOMMENDATIONS.
 2. SILTSACKS SHALL BE CHECKED FOR SEDIMENT LEVEL AND OVERALL CONDITION IMMEDIATELY AFTER EVERY RAIN EVENT AND AT LEAST EVERY DAY DURING PROLONGED RAINFALL.
 3. SEDIMENT SHALL BE REMOVED WHEN THE SEDIMENT HAS ACCUMULATED TO 1/2 THE DESIGN DEPTH OF THE SILTSACK. REMOVED SEDIMENT SHALL BE DEPOSITED IN A SUITABLE AREA AND IN SUCH A MANNER THAT WILL NOT ERODE.
 4. SEDIMENT SHALL ONLY BE REMOVED BY REMOVING THE SILTSACKS FROM THE CATCH BASINS ACCORDING TO MANUFACTURER RECOMMENDATIONS. CARE SHALL BE TAKEN TO AVOID SPILLING SEDIMENT WHILE REMOVING THE SILTSACK.
 5. ANY DAMAGED SILTSACK SHALL BE REPLACED WITH A NEW SILTSACK.

4 INLET PROTECTION - SILT SACK
NOT TO SCALE



5 PERVIOUS PAVER ABOVE R-TANK^{SD} (TYPICAL)
NOT TO SCALE

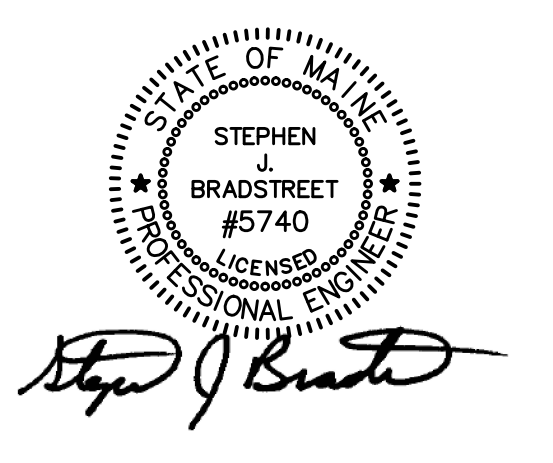


6 R-TANK^{SD} - HS-20 LOADS
NOT TO SCALE

PRELIMINARY NOT FOR CONSTRUCTION

Site: **PROPOSED AC HOTEL PORTLAND**
FORE STREET / HANCOCK STREET / THAMES STREET PORTLAND, MAINE

Prepared for:
PORTLAND NORWICH GROUP, LLC.
2330 PALM RIDGE ROAD #305
SANIBEL, FLORIDA 33957



CIVIL ENGINEER:
STEPHEN J. BRADSTREET, PE #5740
400 COMMERCIAL STREET, SUITE 404
PORTLAND, ME 04101
207-772-2891

RANSOM
Consulting Engineers and Scientists
400 Commercial Street, Suite 404
Portland, ME 04101
Tel. (207) 772-2891
Fax (207) 772-3248
www.ransomenv.com

CONSTRUCTION DETAILS

No.	Revision/Issue	Date
C	FINAL SUBMISSION	03/15/16
B	PRELIMINARY SUBMISSION	09/29/15
A	CLIENT REVIEW	09/15/15

Design by:	MPM	Checked by:	SJB
Drawn by:	JAR	Approved by:	SJB
Project:	150.06094	Date:	AUGUST 2015

Sheet No: **C2.4**
Sheet 11 of 17