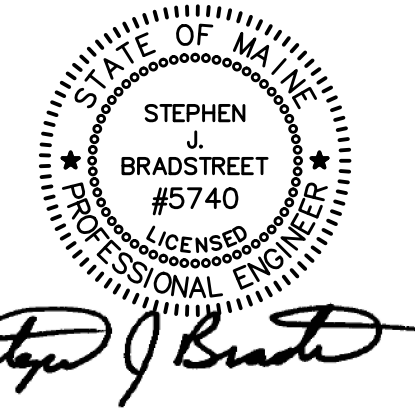


**PROPOSED AC HOTEL  
PORTLAND**  
FORE STREET /  
HANCOCK STREET /  
THAMES STREET  
PORTLAND, MAINE

Prepared for:  
**PORTLAND NORWICH GROUP, LLC.**  
2330 PALM RIDGE ROAD #305  
SANIBEL, FLORIDA 33957



CIVIL ENGINEER:  
**STEPHEN J. BRADSTREET, PE #5740**  
400 COMMERCIAL STREET, SUITE 404  
PORTLAND, ME 04101  
207-772-2891

**SPACE AND BULK STANDARDS**

	REQUIRED	PROPOSED
HOTEL ROOMS	150	150
MINIMUM LOT SIZE	0 S.F.	28,540 S.F. (LOT 1)
ROAD FRONTAGE	0'	>226'
BUILDING SETBACKS (MIN./MAX.)		
FRONT	0'/10'	
SIDE	0'/10'	
REAR	0'	
BUILDING HEIGHT	65'	<65' (5 FLOORS)

ZONE: B-6 EASTERN WATERFRONT MIXED ZONE

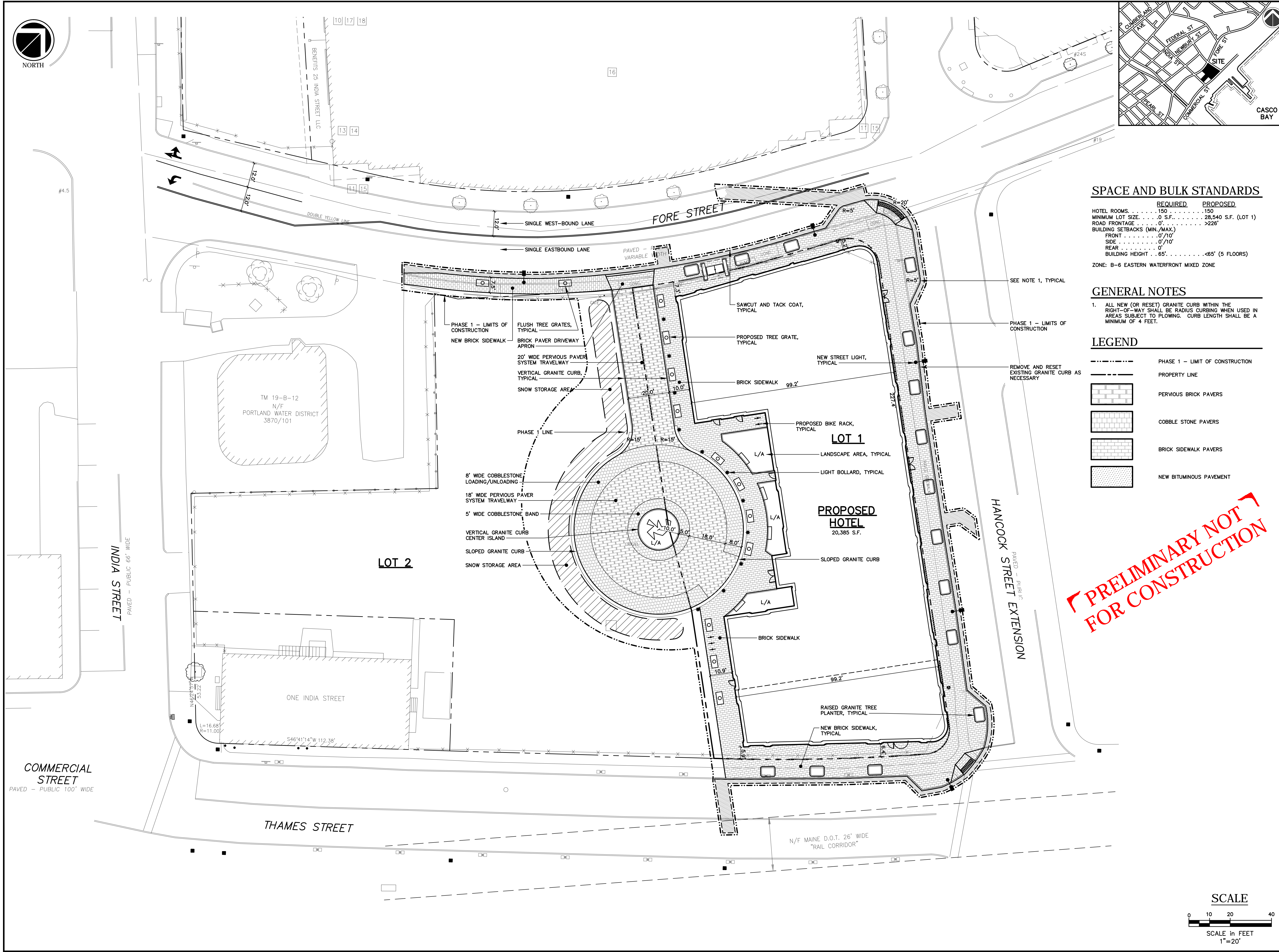
**GENERAL NOTES**

- ALL NEW (OR RESET) GRANITE CURB WITHIN THE RIGHT-OF-WAY SHALL BE RADIUS CURBING WHEN USED IN AREAS SUBJECT TO PLOWING. CURB LENGTH SHALL BE A MINIMUM OF 4 FEET.

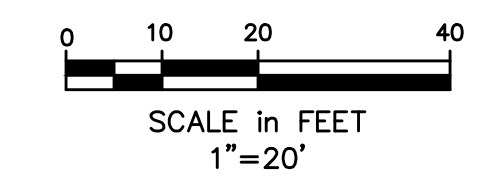
**LEGEND**

- PHASE 1 - LIMIT OF CONSTRUCTION
- PROPERTY LINE
- PERVIOUS BRICK PAVERS
- COBBLE STONE PAVERS
- BRICK SIDEWALK PAVERS
- NEW BITUMINOUS PAVEMENT

**PRELIMINARY NOT FOR CONSTRUCTION**



**SCALE**



**SITE PLAN**

No.	Revision/Issue	Date
C	FINAL SUBMISSION	03/15/16
B	PRELIMINARY SUBMISSION	09/29/15
A	CLIENT REVIEW	09/15/15

Design by:	MPM	Checked by:	SJB
Drawn by:	JAR	Approved by:	SJB
Project:	150.06094	Date:	AUGUST 2015
Sheet No:	<b>C1.0</b>		
	Sheet 4 of 17		