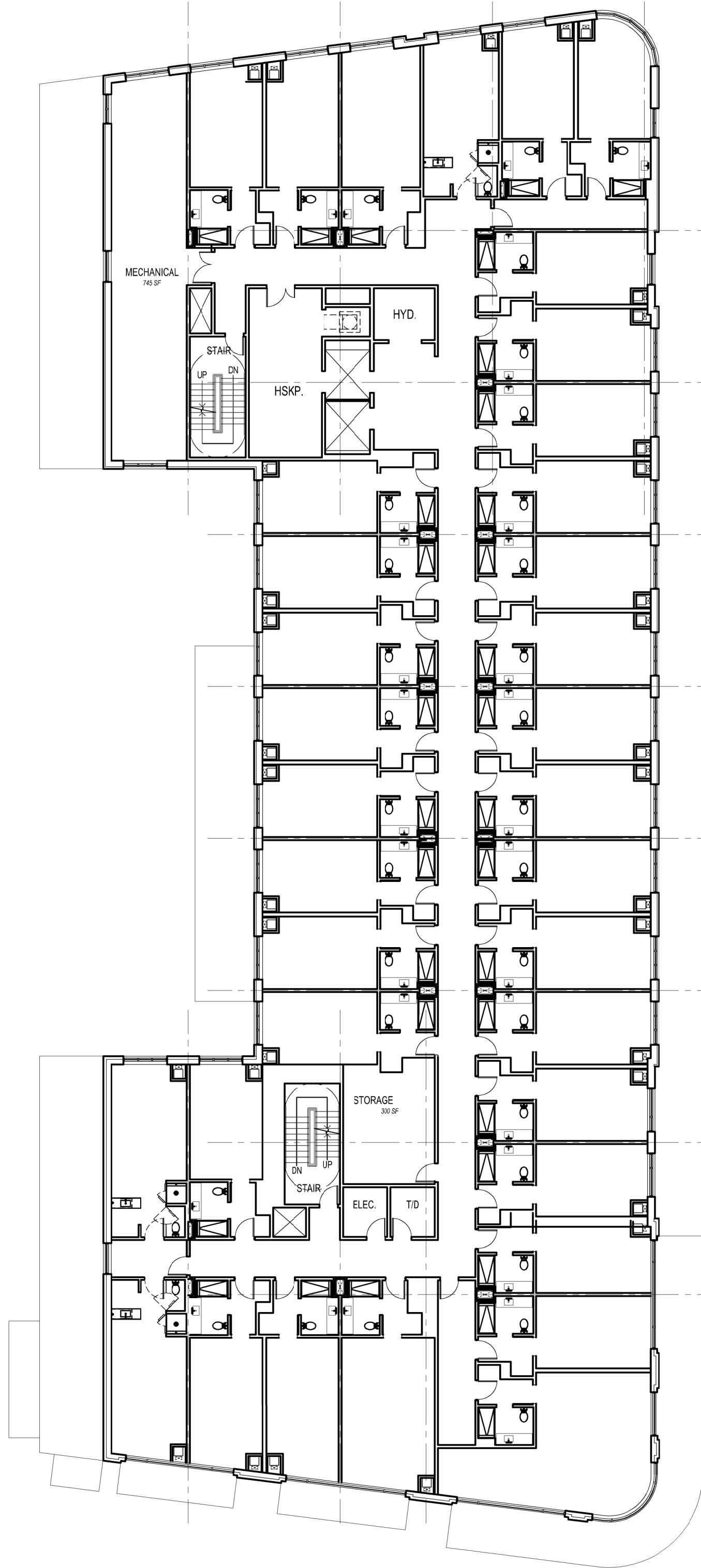
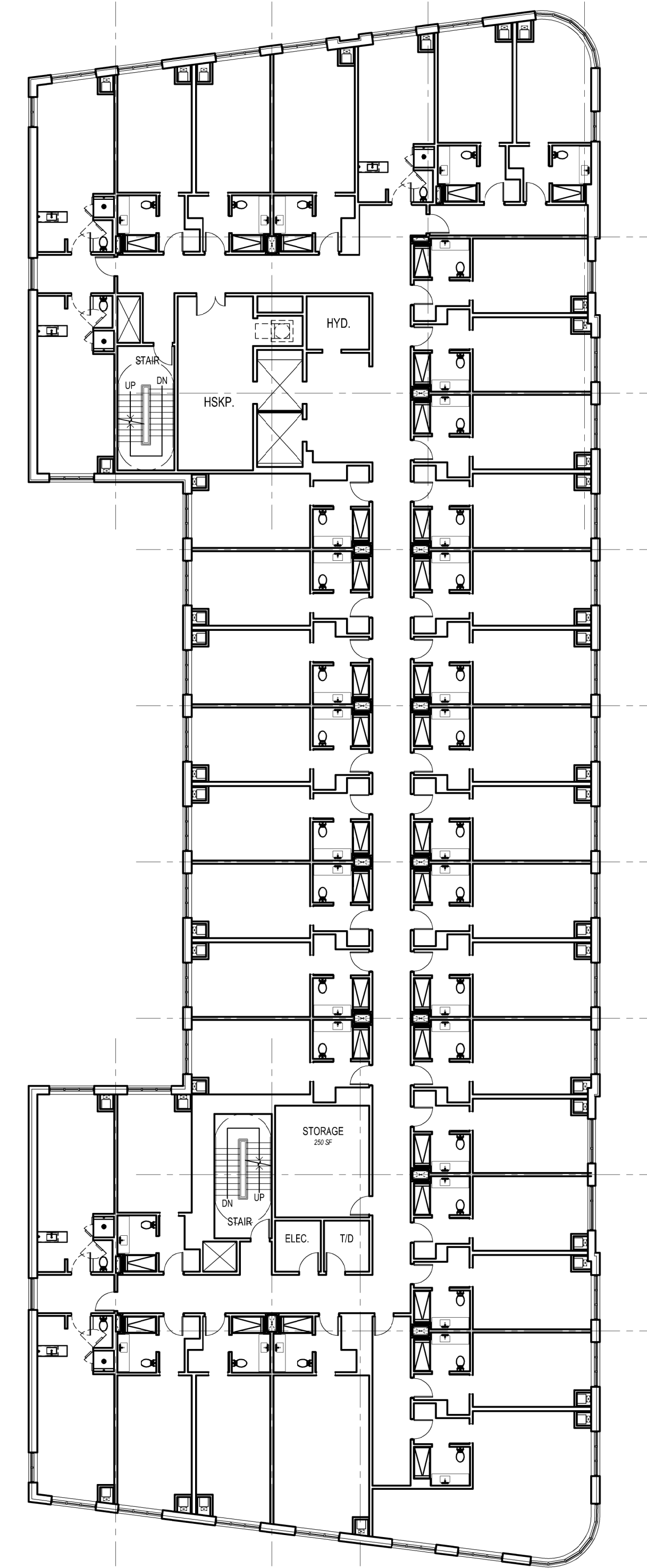


GROUND FLOOR PLAN
1/16"=1'-0"



SECOND FLOOR PLAN
1/16"=1'-0"

ROOM TYPE	FLOOR			TOTAL
	FIRST	SECOND	TYPICAL (18,650)	
TYP. BAY	0	33	33	132
METRO BAY	0	3	5	18
TOTAL	0	36	38	150
SQUARE FEET	20,040	18,650	55,950	94640



TYPICAL FLOOR PLAN (3-6)
1/16"=1'-0"