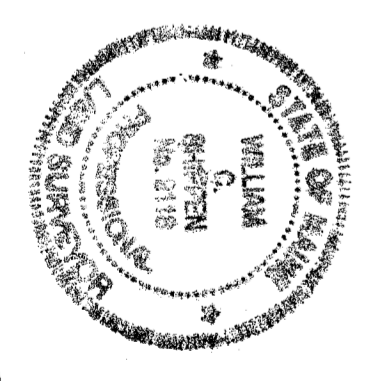
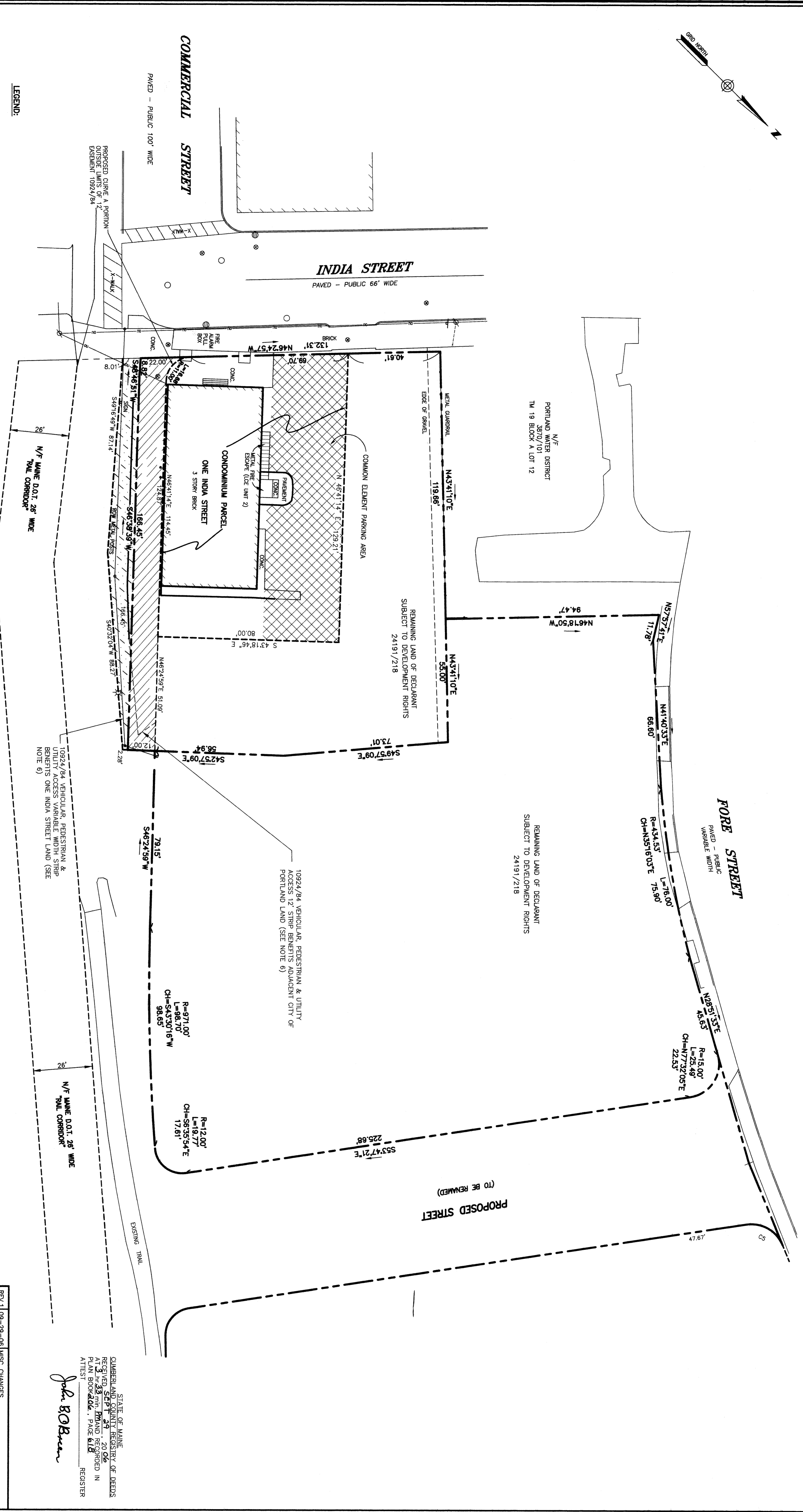


- LEGEND:**
- GAS VALVE
  - WATER VALVE
  - UTILITY POLE
  - LIGHT POLE
  - MANHOLE
  - CATCH BASIN
  - SIGN
  - GUARDRAIL
  - CURB
  - OVERHEAD WIRES
  - LIMIT OF COMMON ELEMENT
  - LCE
  - LIMITED COMMON ELEMENT

- PLAN REFERENCES:**
1. RECORDING PLAT OCEAN GATEWAY COMMERCIAL STREET AND FORE STREET, PORTLAND, MAINE MADE FOR CITY OF PORTLAND AND STATE OF MAINE DATED AUGUST 4, 2004 BY OWEN HASKELL, INC.

- NOTES:**
1. OWNER OF RECORD: LPAR LLC BOOK 24191 PAGE 217
  2. THE CONDOMINIUM PARCEL IS SHOWN AS A PORTION OF LOT 1 BLOCK A, ON THE CITY OF PORTLAND ASSESSORS MAP 19, APD 14-4-19.
  3. BEARINGS ARE GRID NORTH PER PLAN REFERENCE 1.
  4. FEATURES SHOWN ARE BASED, IN PART, ON ACTUAL ON THE GROUND FIELD LOCATIONS AND ON AERIAL MAPS.
  5. TOTAL AREA OF PARCEL IS 1.62 ACRES.
  6. THE 12' WIDTH STRIP AND VARIABLE WIDTH STRIP ARE TO BECOME PART OF THE EXTENSION OF COMMERCIAL STREET AND ARE NOT PART OF THE CONDOMINIUM. SEE MEMORANDUM OF UNDERSTANDING BETWEEN ONE INDIA STREET AND CITY OF PORTLAND DATED APRIL 10, 2005.



STATE OF MAINE  
 CLAMBERLAND COUNTY REGISTRY OF DEEDS  
 RECEIVED **SEPT 29 2006**  
 AT 2:32 PM  
 PLAN BOOK **2005-073**, PAGE **618**  
 ATTEST: *John Roberson* REGISTER

REV:1 09-28-06 MISC CHANGES

**CONDOMINIUM PLAT**  
**"THE LONGFELLOW, A CONDOMINIUM"**  
 ONE INDIA STREET, PORTLAND, CLAMBERLAND COUNTY MAINE

MADE FOR  
**LPAR LLC, THE DECLARANT**  
**AND OWNER OF RECORD**  
 2 MARKET STREET SUITE 500, PORTLAND, MAINE

**OWEN HASKELL, INC.**  
 16 CASCO ST., PORTLAND, ME 04101 (807) 774-0424  
 PROFESSIONAL LAND SURVEYORS

Drawn By	WCS	Date	SEP 29 2006	Job No.	2005-073 P
Trace By	RWC	Scale	1" = 20'	Dwg. No.	1
Check By	WCS				
Back No.	FILE				