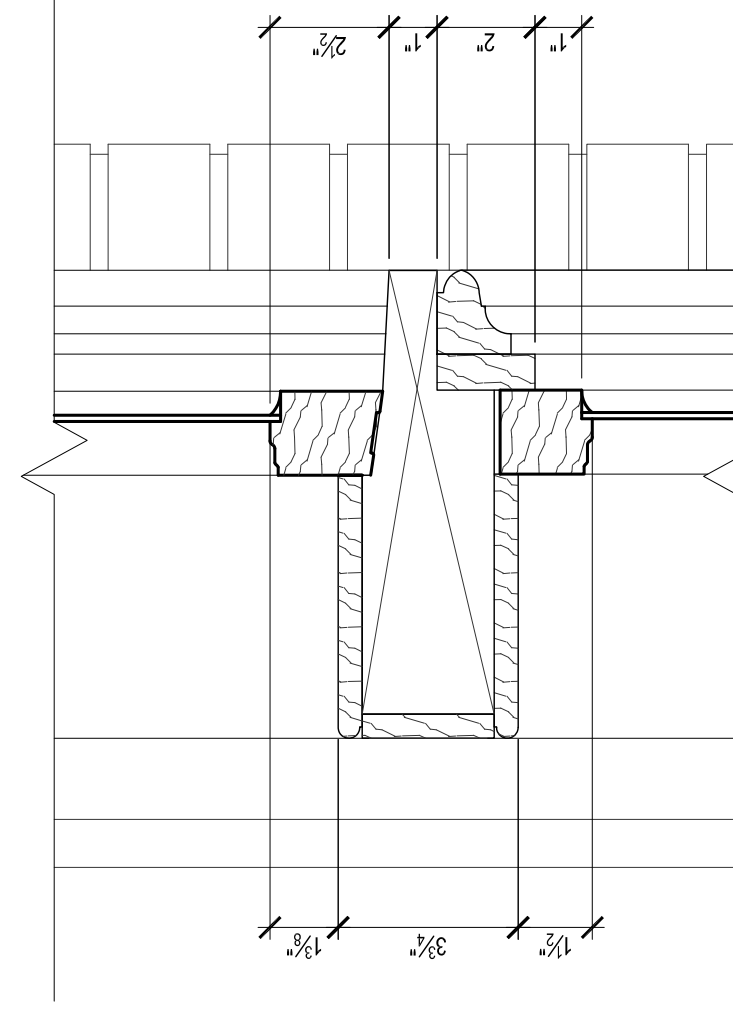
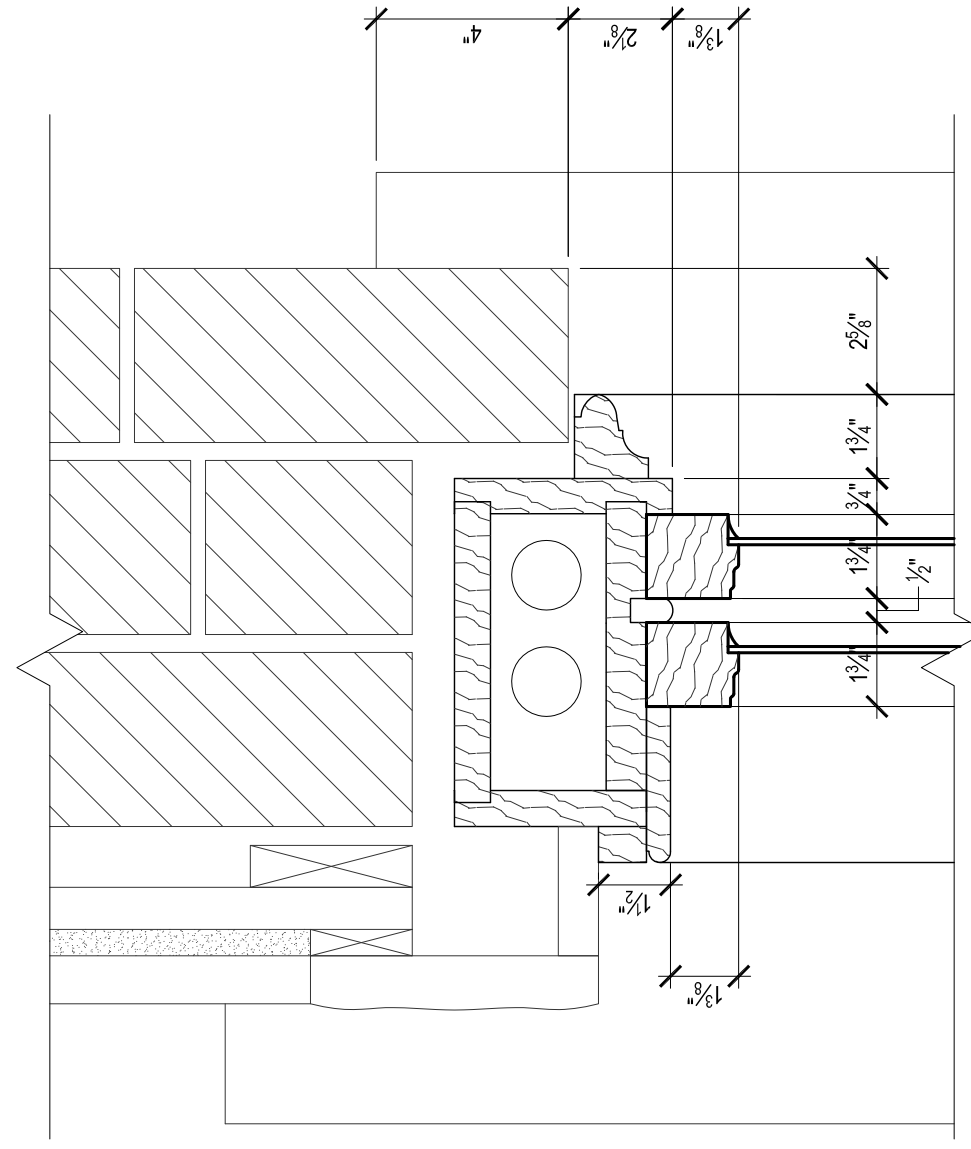


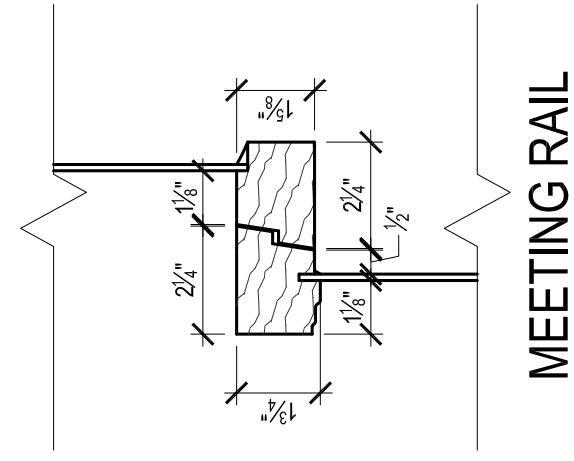
TRANSOM HEAD



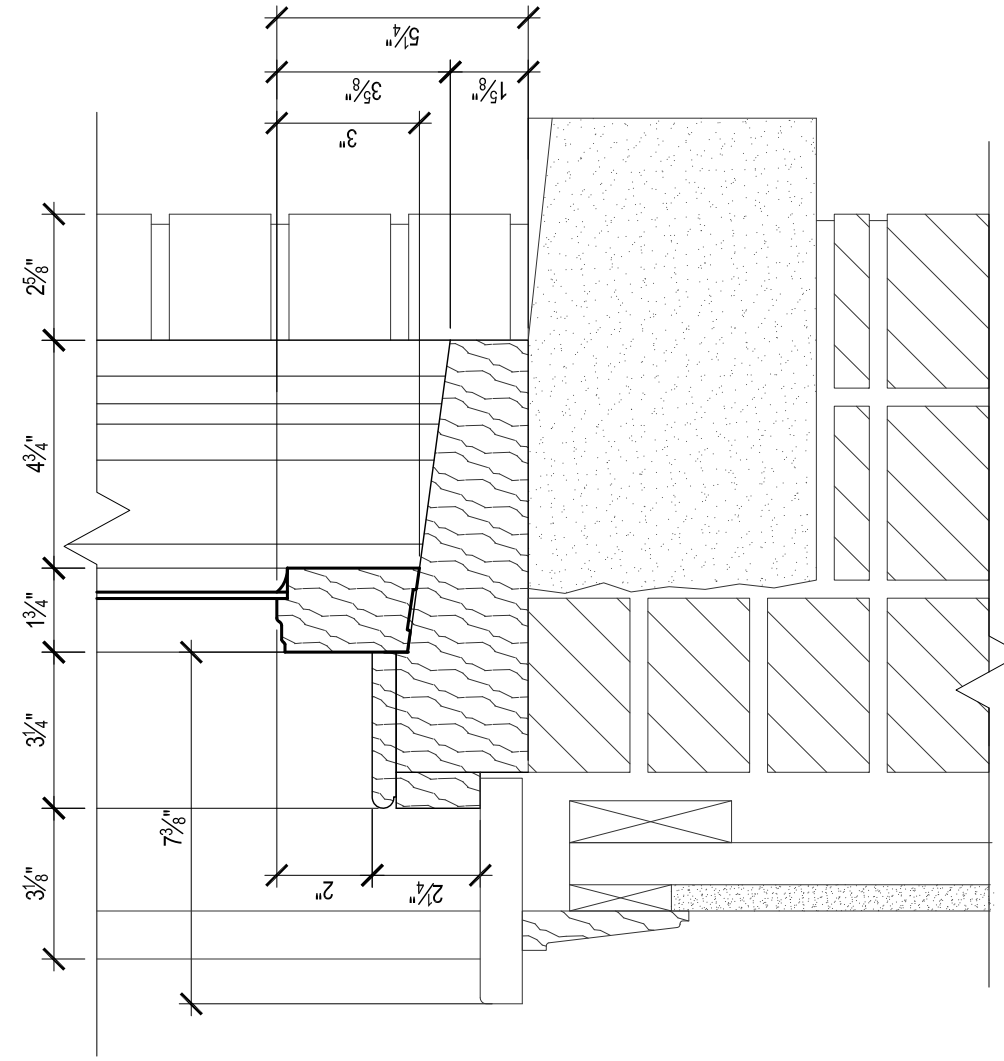
HEAD AT TRANSOM



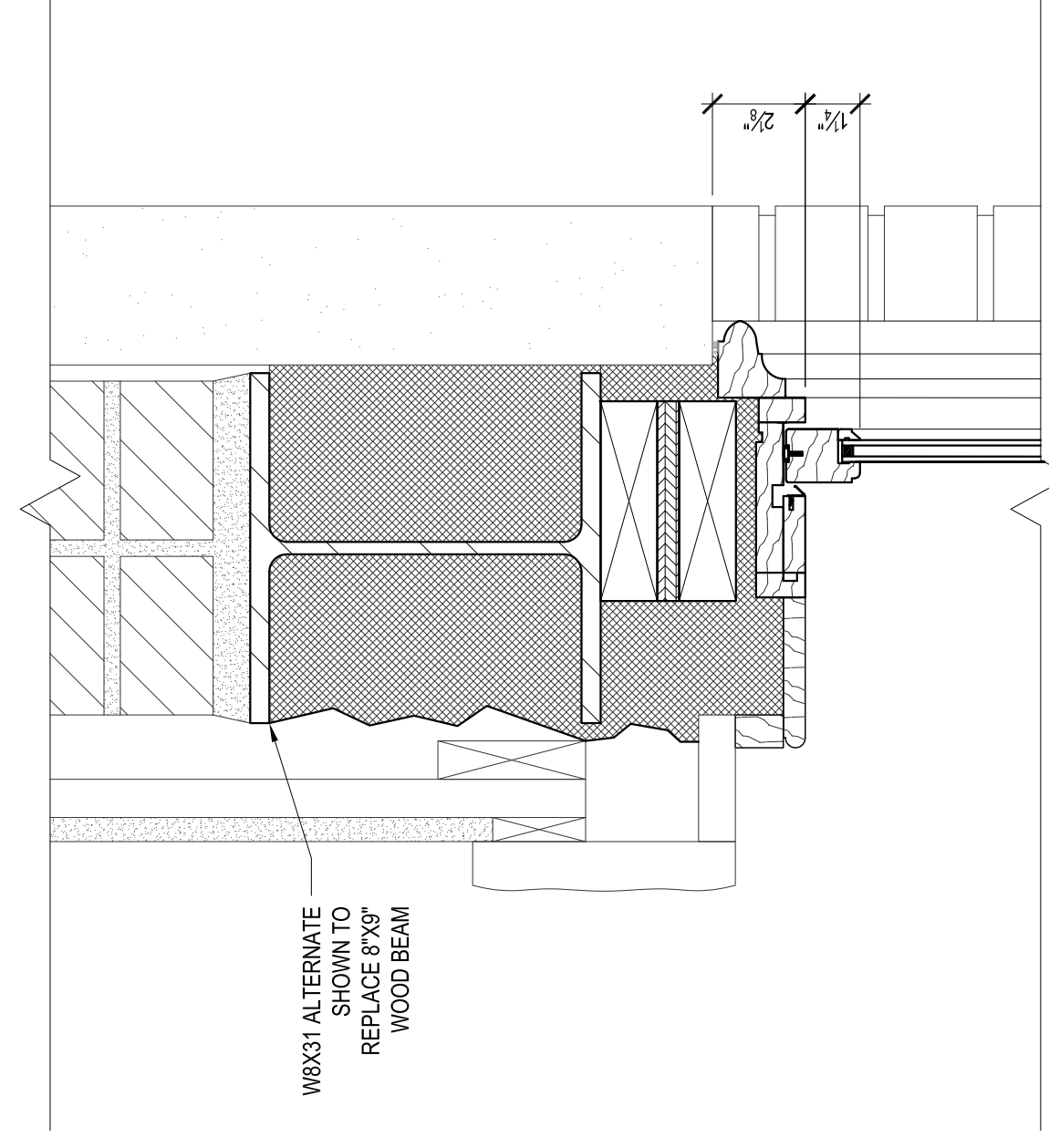
JAMB



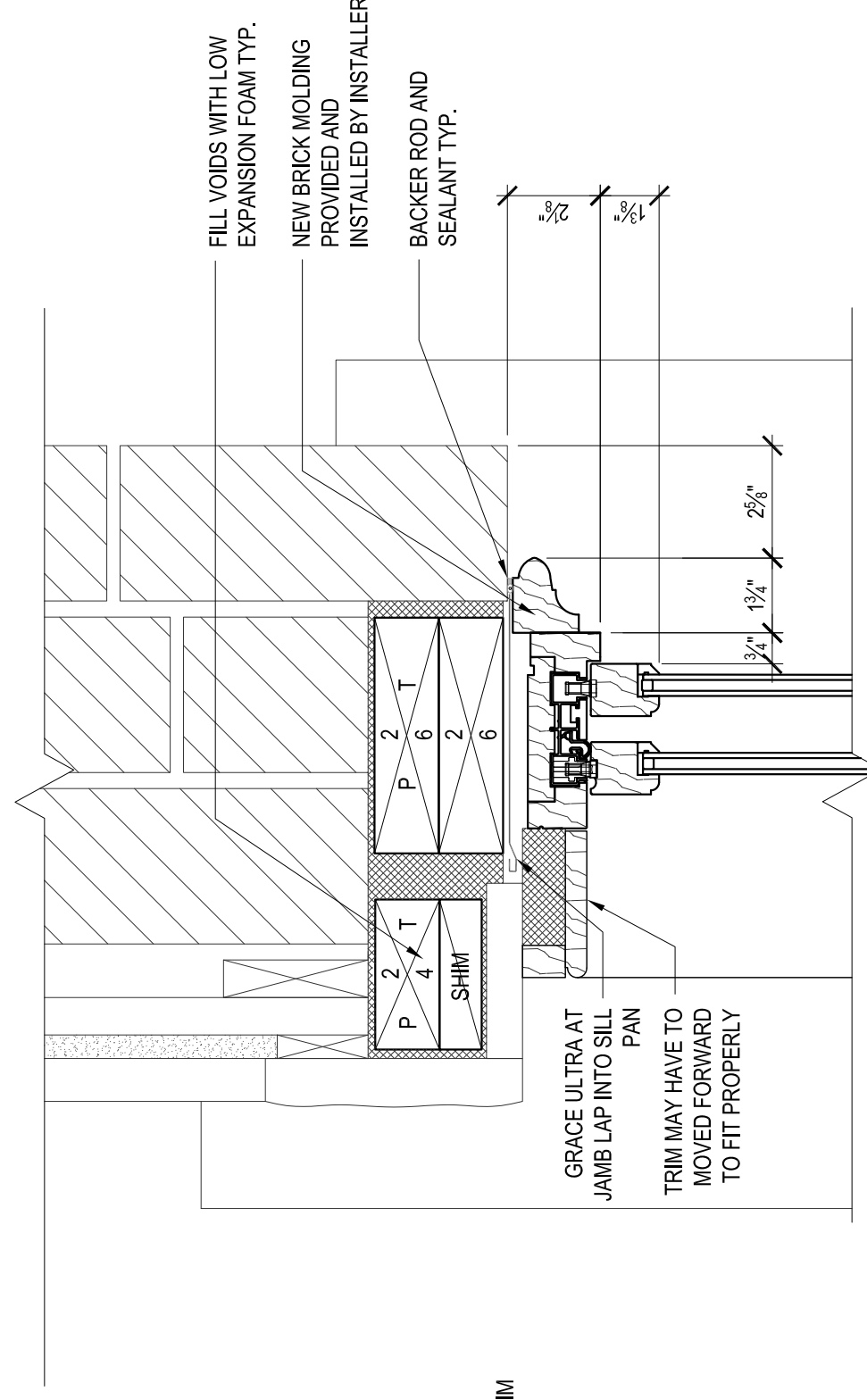
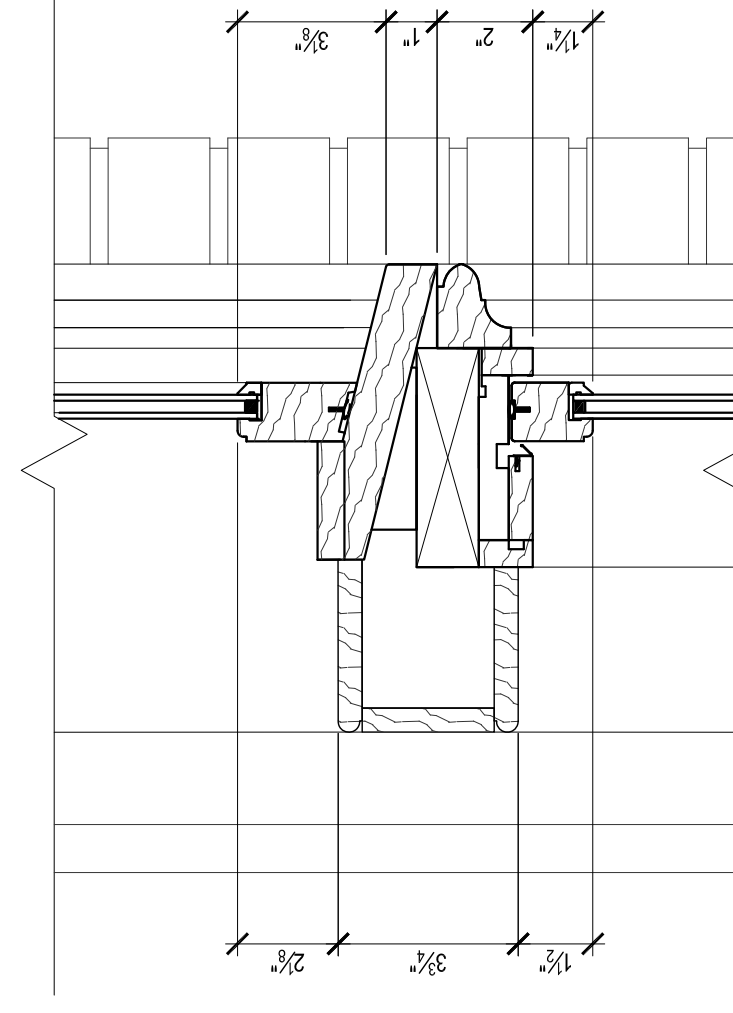
MEETING RAIL



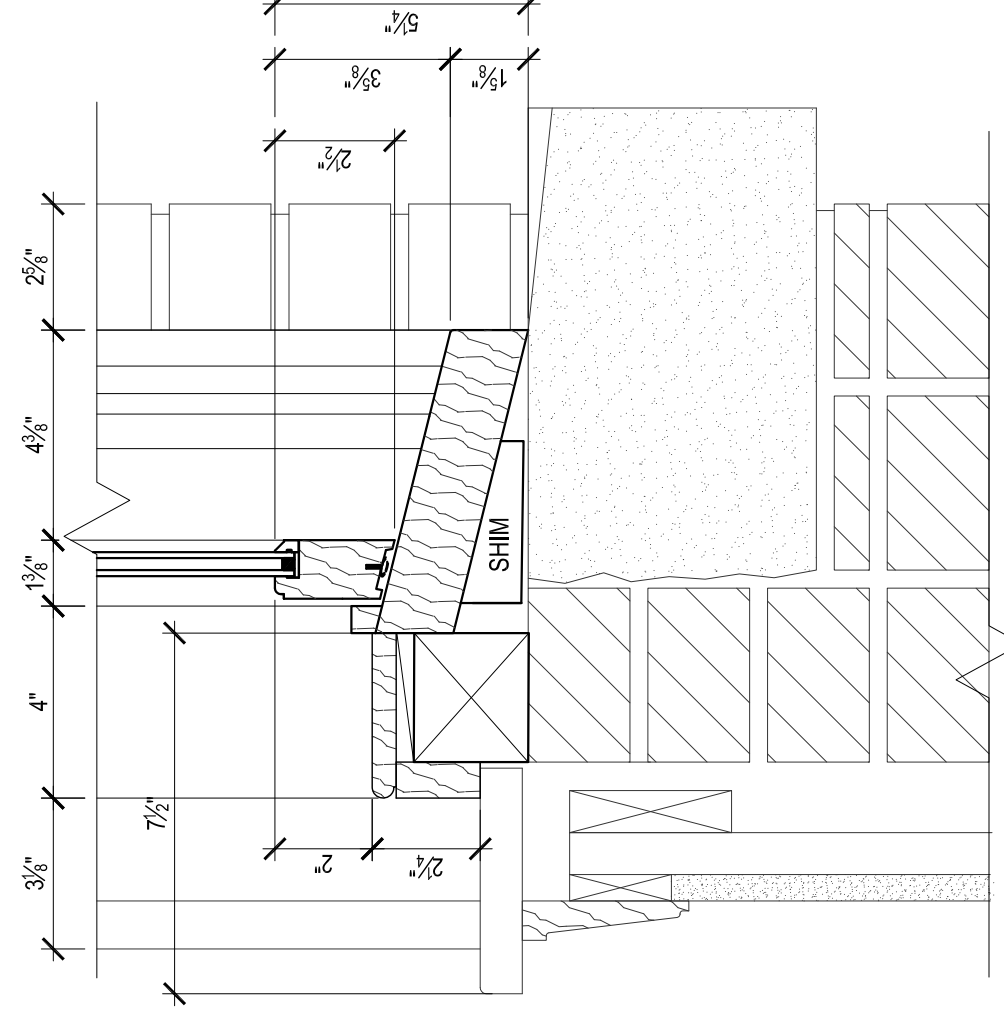
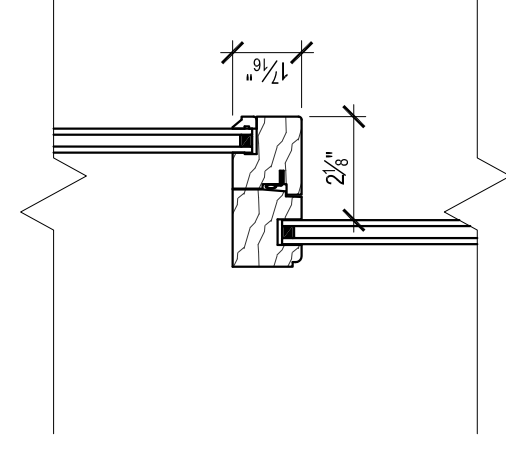
SILL



W8X31 ALTERNATE  
SHOWN TO  
REPLACE 8X8"  
WOOD BEAM



EXISTING JAMB TRIM



2 EXISTING SECOND FLOOR WINDOW DETAILS

SCALE: 3/8"=1'-0"

Date: MAR 10 2016

Scale: As indicated

SECOND FLOOR  
WINDOW DETAILS

Revisions:

SCALE: 3/8"=1'-0"

1

NEW SECOND FLOOR WINDOW DETAILS

SCALE: 3/8"=1'-0"

Project: GRAND TRUNK BUILDING

1 LINDA STREET  
PORTLAND, ME

Architect: ARCHETYPE architects

48 Union Wharf Portland, Maine 04101  
(207) 772-6023 ARCHETYPE@ARCHETYPEPA.COM

Consultant: Building Envelope Specialists

PO BOX 23895 SOUTH PORTLAND MAINE 04116  
PHONE: 207-800-0086

Prepared For: GORHAM SAVINGS BANK

10 WENTWORTH DRIVE  
GORHAM, ME 04038

BE8

