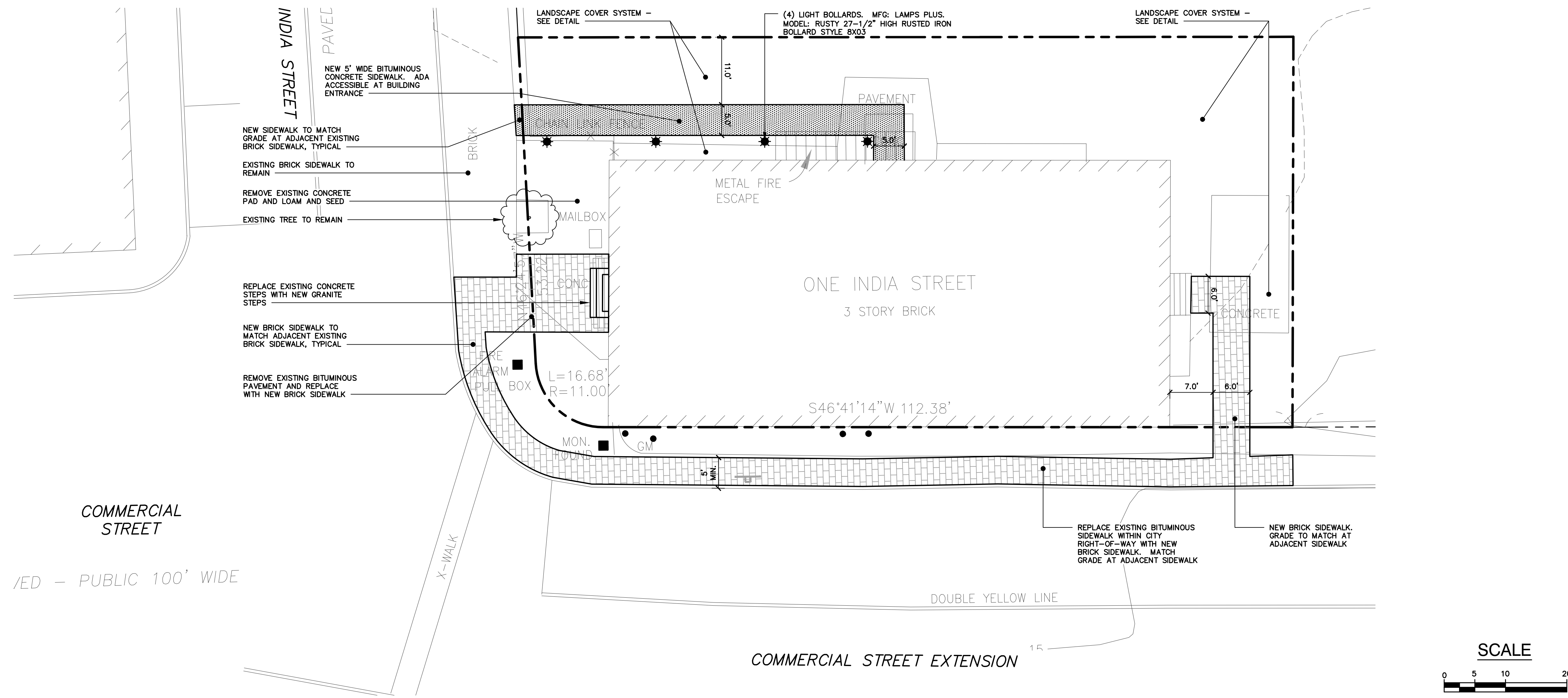
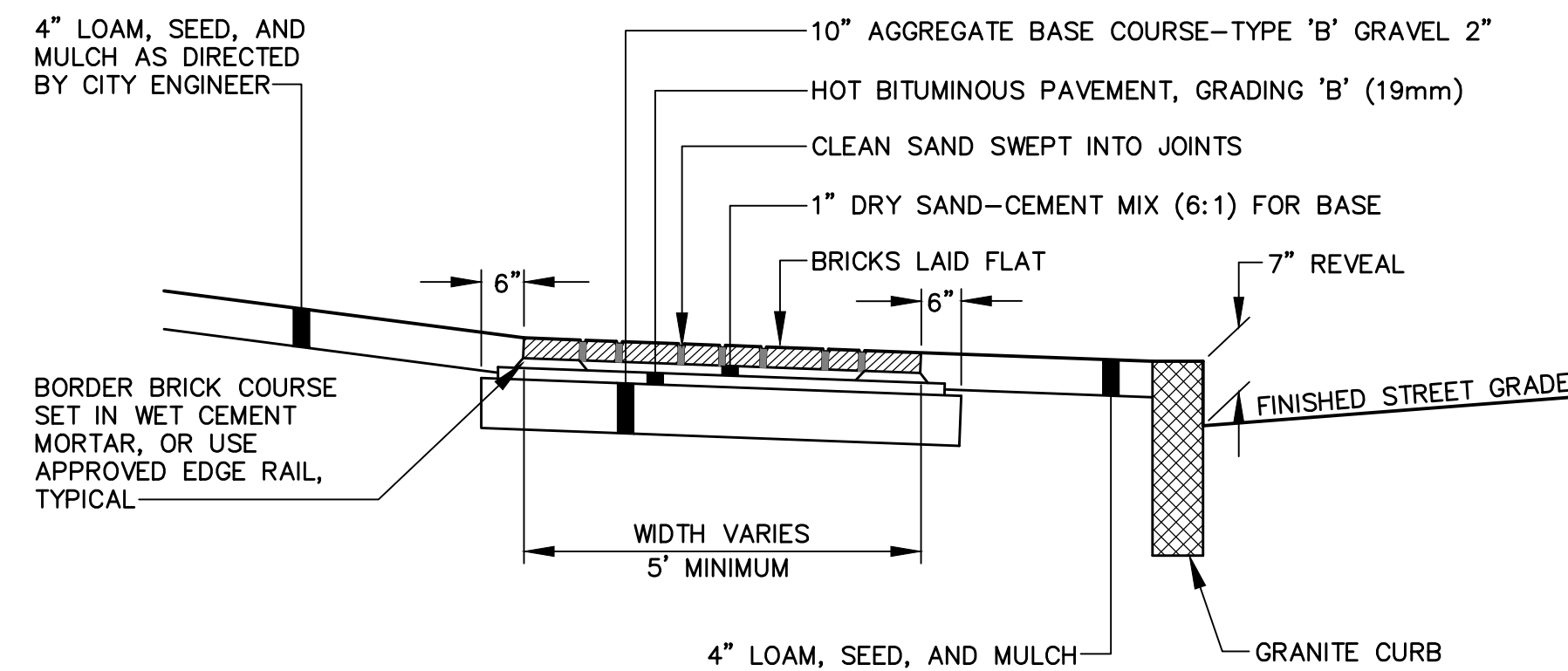




NORTH

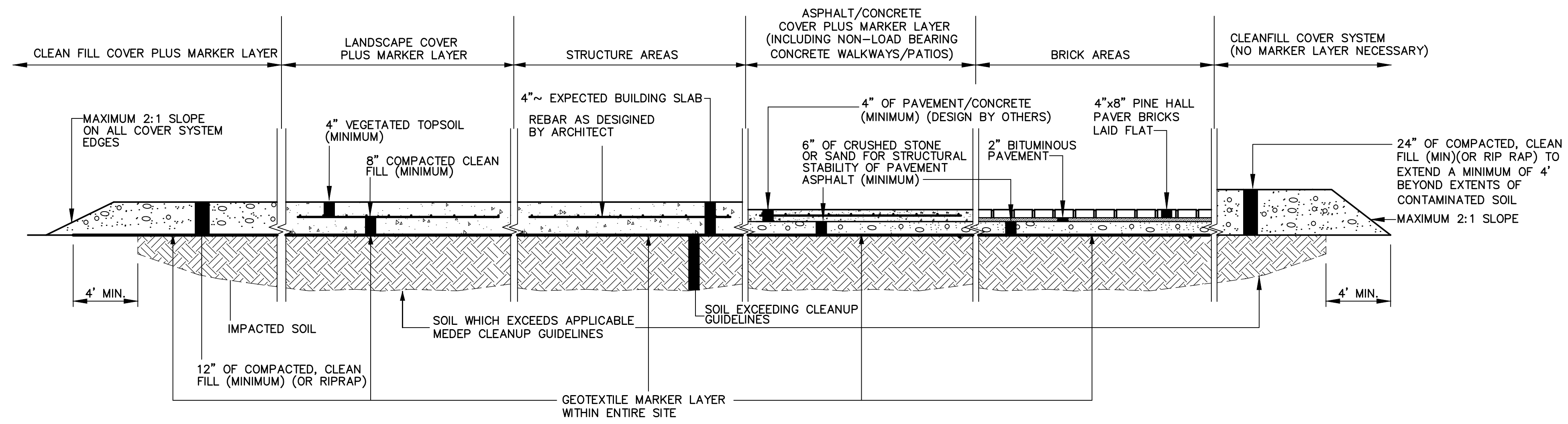


PLAN: 1 INDIA STREET
SCALE: 1" = 10' (H)



BRICKS TO BE USED:
NEW CONSTRUCTION:
 4"x8" PINE HALL PATHWAY PAVER BRICK MANUFACTURED BY PINE HALL BRICK CO., MADISON, NORTH CAROLINE. LACHANCE ITEM # 193623, PINE HALL PATHWAY BRICK.
REPAIR/MAINTENANCE TO EXISTING BRICK SIDEWALKS:
 VERMONT PAVER SUPPLIED BY GAGNE AND SONS. SPECIFICATION # VERMONT BACKER BRICK, ITEM # VB8B.

CITY OF PORTLAND
 BRICK SIDEWALK WITH BITUMINOUS BASE
 (TYPICAL WITHIN CITY RIGHT-OF-WAY)
 1 NOT TO SCALE



NOTE:
 THE QUANTITIES IDENTIFIED ARE MINIMUM REQUIREMENTS FOR COVERING OF THE IDENTIFIED CONTAMINATED SOILS. ADDITIONAL SUB-BASE MATERIALS MAY BE REQUIRED IN AREAS PROPOSED FOR ASPHALT PAVING, BUILDINGS AND/OR CONCRETE SIDEWALKS/PATIOS, AS NECESSARY, TO MAINTAIN STRUCTURAL INTEGRITY OF THESE MATERIALS. THE SITE DESIGN ENGINEER IS REQUIRED TO MAKE THE DETERMINATION OF STRUCTURAL SUITABILITY.

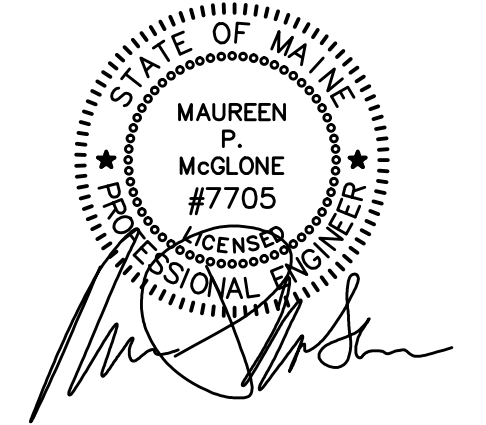
2 SOIL COVER SYSTEM (WITHIN LIMITS OF SITE)
 NOT TO SCALE

GRAND TRUNK BUILDING

1 INDIA STREET
 PORTLAND, MAINE

Prepared for:

GORHAM SAVINGS BANK
 64 MAIN STREET
 GORHAM, MAINE 04038



CIVIL ENGINEER:
 MAUREEN P. MCGLONE, PE #
 400 COMMERCIAL STREET, SUITE 404
 PORTLAND, ME 04101
 207-772-2891



400 Commercial Street, Suite 404
 Portland, ME 04101
 Tel. (207) 772-2891
 Fax (207) 772-3248
 www.ransomenv.com

SITE PLAN

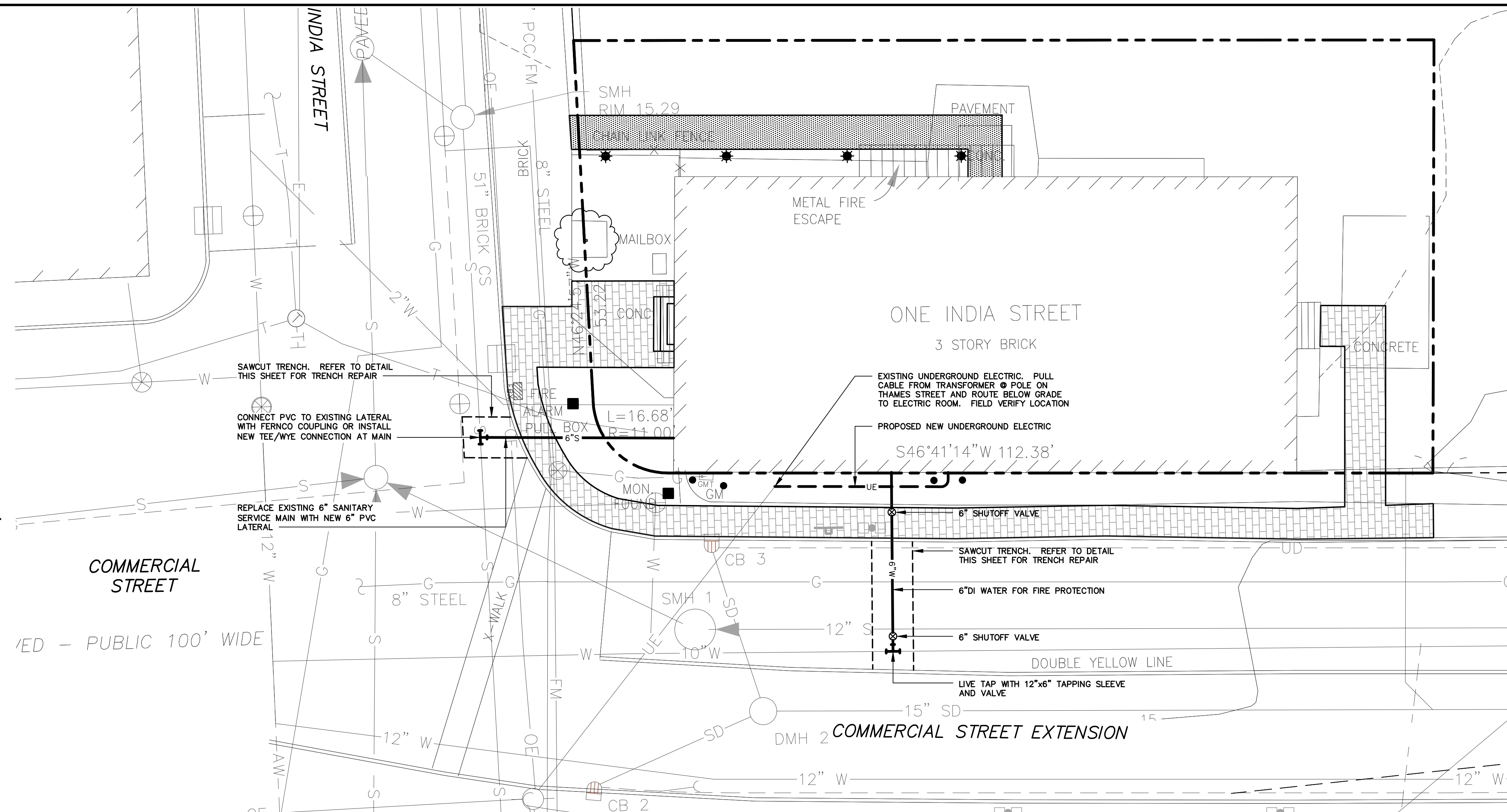
No.	Revision/Issue	Date
A	BUILDING SUBMISSION	03/15/16

Design by:	Checked by:
MPM	SJB
Drawn by:	Approved by:
JAR	SJB
Project:	Date:
140.06143	MARCH 2016

Sheet No:
C-100
 Sheet 1 of 2



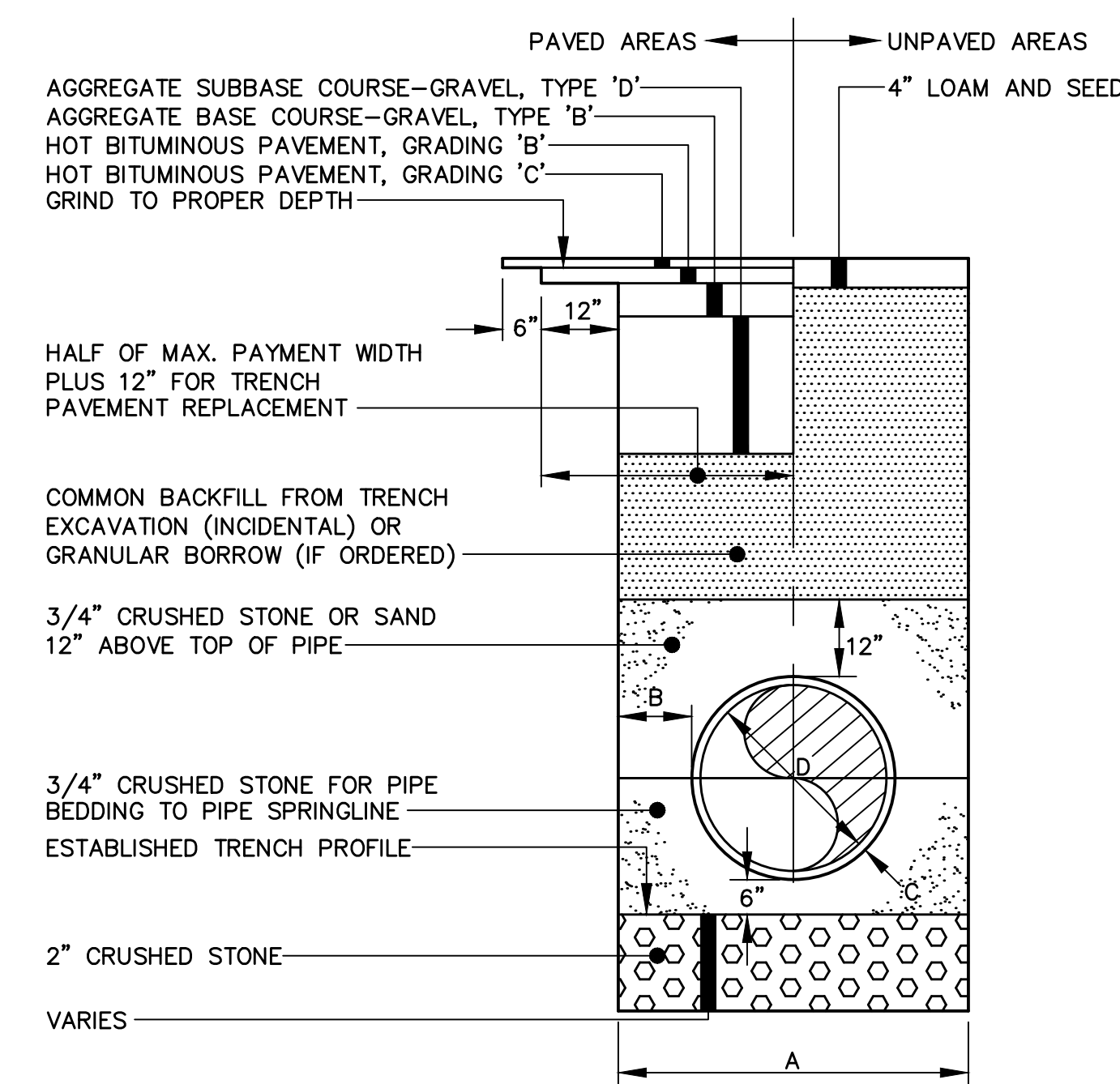
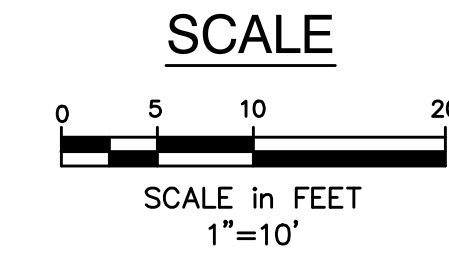
NORTH



GENERAL NOTES

1. LOCATIONS OF EXISTING UTILITIES ARE APPROXIMATE. FIELD VERIFY PRIOR TO UTILITY CONSTRUCTION.
2. LOCATIONS OF PROPOSED UTILITIES ARE APPROXIMATE AND SHOULD BE COORDINATED WITH FINAL ARCHITECTURAL DRAWINGS PRIOR TO INSTALLATION.
3. ALL WORK WITHIN THE CITY OF PORTLAND RIGHT-OF-WAY SHALL COMPLY WITH THE CITY'S TECHNICAL MANUAL.

PLAN: 1 INDIA STREET
SCALE: 1" = 10' (H)

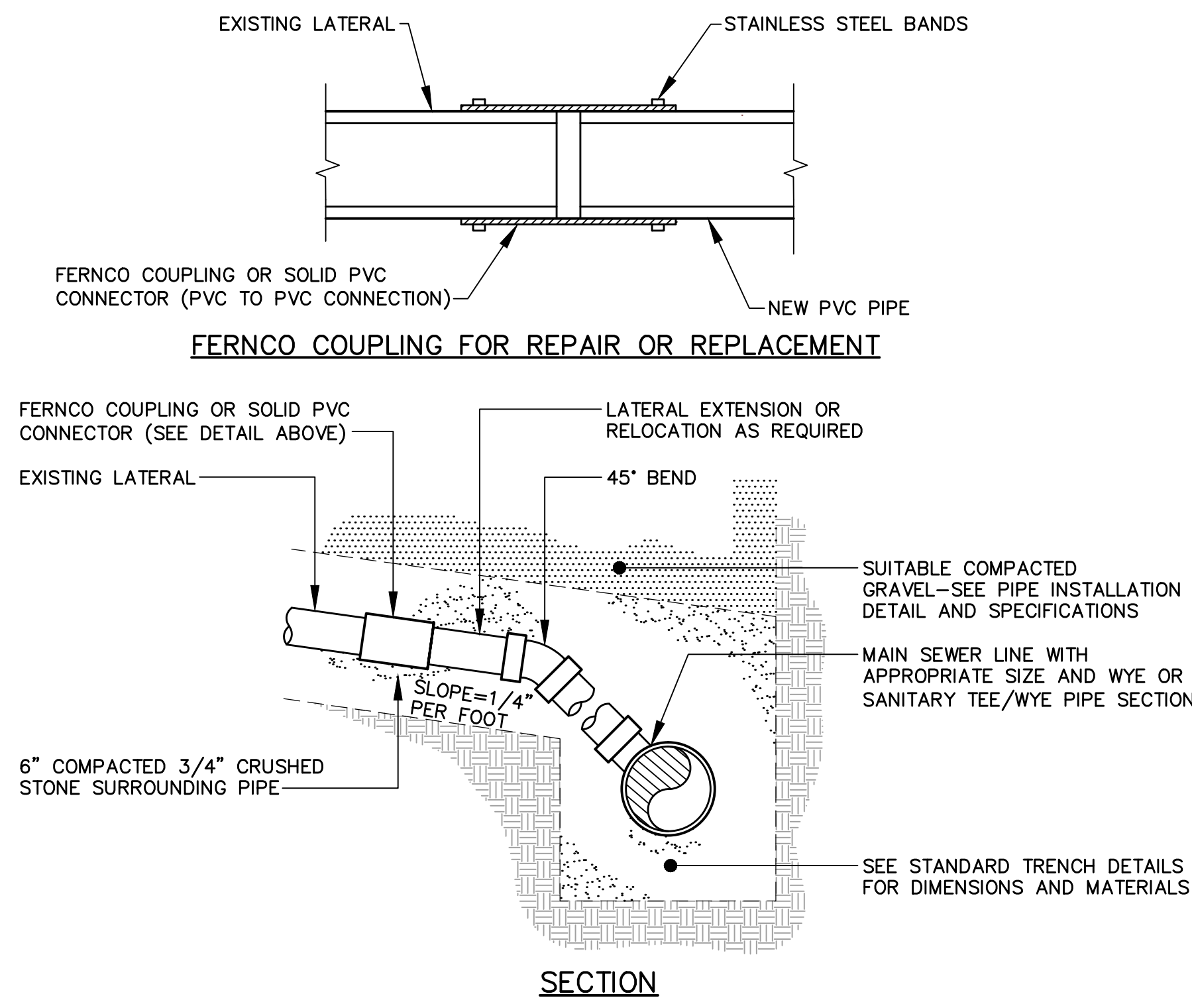


1 CITY OF PORTLAND PIPE TRENCH INSTALLATION (TYPICAL)
NOT TO SCALE

1. ALTERNATE CONSTRUCTION METHODS OR PAYMENT METHODS SHALL BE APPROVED BY THE CITY.
2. IN PAVED AREAS, DEPTHS OF GRAVEL AND HOT MIX ASPHALT PAVEMENT SHALL MATCH THE GREATER OF EXISTING CONDITIONS OR THE REQUIREMENTS FOR THE CORRESPONDING STREET CLASSIFICATION.
3. DIMENSION B SHALL BE SUFFICIENT TO ALLOW CRUSHED STONE BEDDING TO BE PLACED AND COMPACTED UNDER THE HAUNCHES OF THE PIPE; BUT IN ALL CASES DIMENSION B SHALL BE AT LEAST 9".
4. DIMENSION A IS THE MAXIMUM WIDTH ALLOWED FOR CALCULATING PAY QUANTITIES UNDER GRANULAR BORROW, CRUSHED STONE, STRUCTURAL EARTH EXCAVATION, AND STRUCTURAL ROCK EXCAVATION. DIMENSION A SHALL BE BASED ON PIPE DIAMETER D, AS SET FORTH IN THE FOLLOWING TABLE:

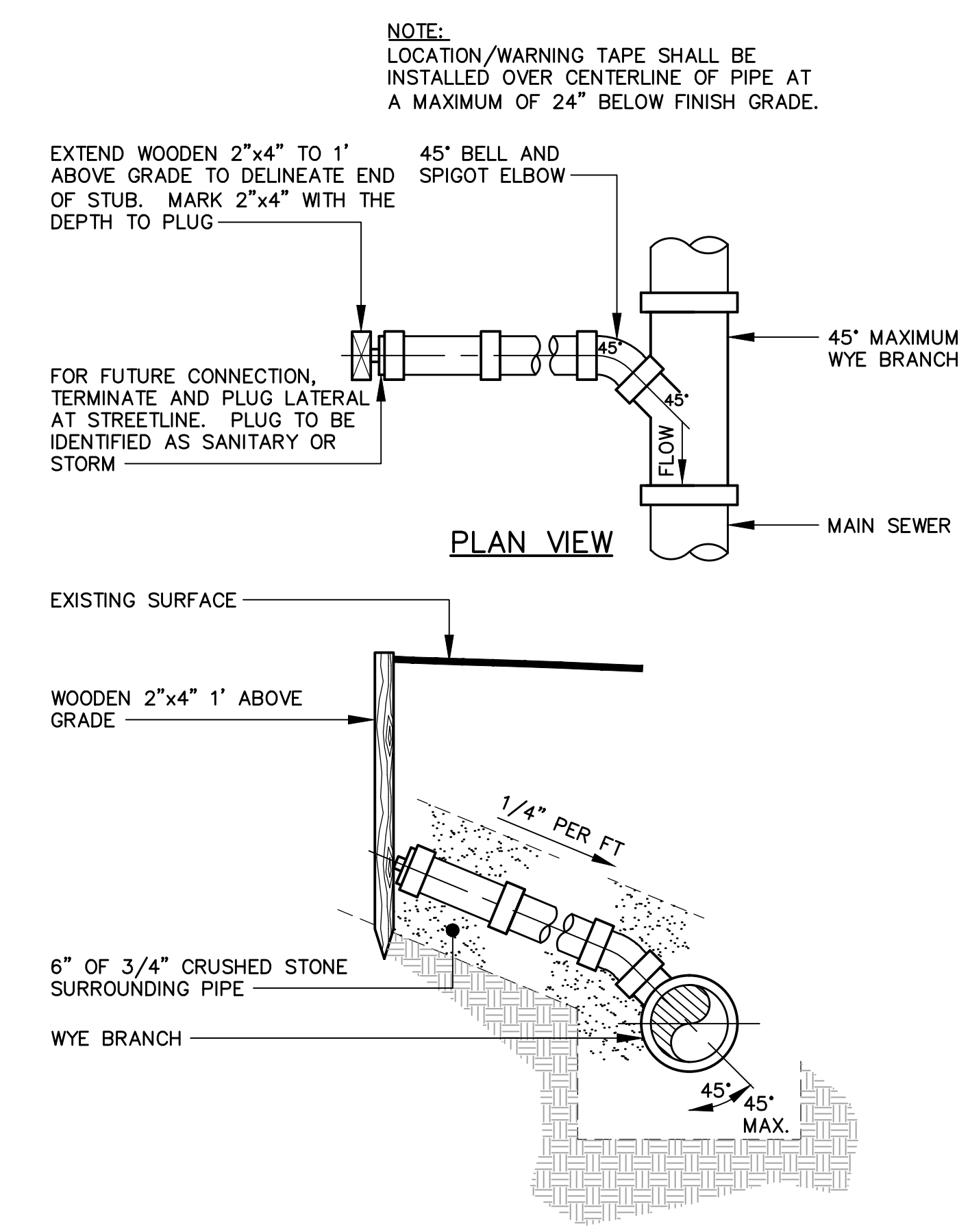
PIPE DIAMETER, D (INCHES)	MAX. TRENCH WIDTH, A (FEET)
4	4.0
6	4.0
8	4.0
10	4.0
12	5.0
15	5.0
18	5.0
21	5.0
24	6.0
27	6.0
30	6.0
36	6.0
42	7.0
48	7.0

2 CITY OF PORTLAND PIPE INSTALLATION - NOTES (TYPICAL)
NOT TO SCALE



- NOTES:**
1. LOCATIONS AND ELEVATIONS OF STUBS SHOWN ON THE PLANS ARE TO BE CONSIDERED AS APPROXIMATE AND MAY BE ADJUSTED AS DIRECTED TO SUIT FIELD CONDITIONS.
 2. BUILDING CONNECTIONS TO THE MAIN LINE OF THE SEWER, SHALL CONSIST OF AN APPROPRIATE "Y" BRANCH CONNECTION AS SHOWN ON THE PLANS, OR AS DIRECTED. ACTUAL "Y" LOCATIONS FOR BUILDING CONNECTIONS SHALL BE DETERMINED DURING CONSTRUCTION. THE CONTRACTOR SHALL KEEP A COMPLETE RECORD OF "Y" LOCATIONS WHICH SHALL BE GIVEN TO THE CITY OF PORTLAND UPON COMPLETION OF THE CONTRACT. ALL PVC TO PVC COUPLING SHALL BE "SOLID PVC COUPLINGS." PIPE DIAMETERS MAY VARY.
 3. PIPE DIAMETERS MAY VARY.

3 CITY OF PORTLAND EXISTING LATERAL CONNECTION (TYPICAL)
NOT TO SCALE



4 CITY OF PORTLAND TYPICAL HOUSE LATERAL TEE/WYE CONNECTION (TYPICAL)
NOT TO SCALE

Site: **GRAND TRUNK BUILDING**
1 INDIA STREET
PORTLAND, MAINE

Prepared for: **GORHAM SAVINGS BANK**
64 MAIN STREET
GORHAM, MAINE 04038

CIVIL ENGINEER:
MAUREEN P. MCGLONE, PE #
400 COMMERCIAL STREET, SUITE 404
PORTLAND, ME 04101
207-772-2891

RANSOM
Consulting Engineers and Scientists
400 Commercial Street, Suite 404
Portland, ME 04101
Tel. (207) 772-2891
Fax (207) 772-3248
www.ransomenv.com

UTILITY PLAN AND DETAILS

No.	Revision/Issue	Date
A	BUILDING SUBMISSION	03/15/16

Design by:	Checked by:
MPM	SJB
Drawn by:	Approved by:
JAR	SJB
Project:	Date:
140.06143	MARCH 2016

Sheet No: **C-101**
Sheet 2 of 2