

REVISION	DESCRIPTION	DATE
0	ISSUED FOR REVIEW & APPROVAL	8/19/2016

RESERVED FOR CITY STAMP

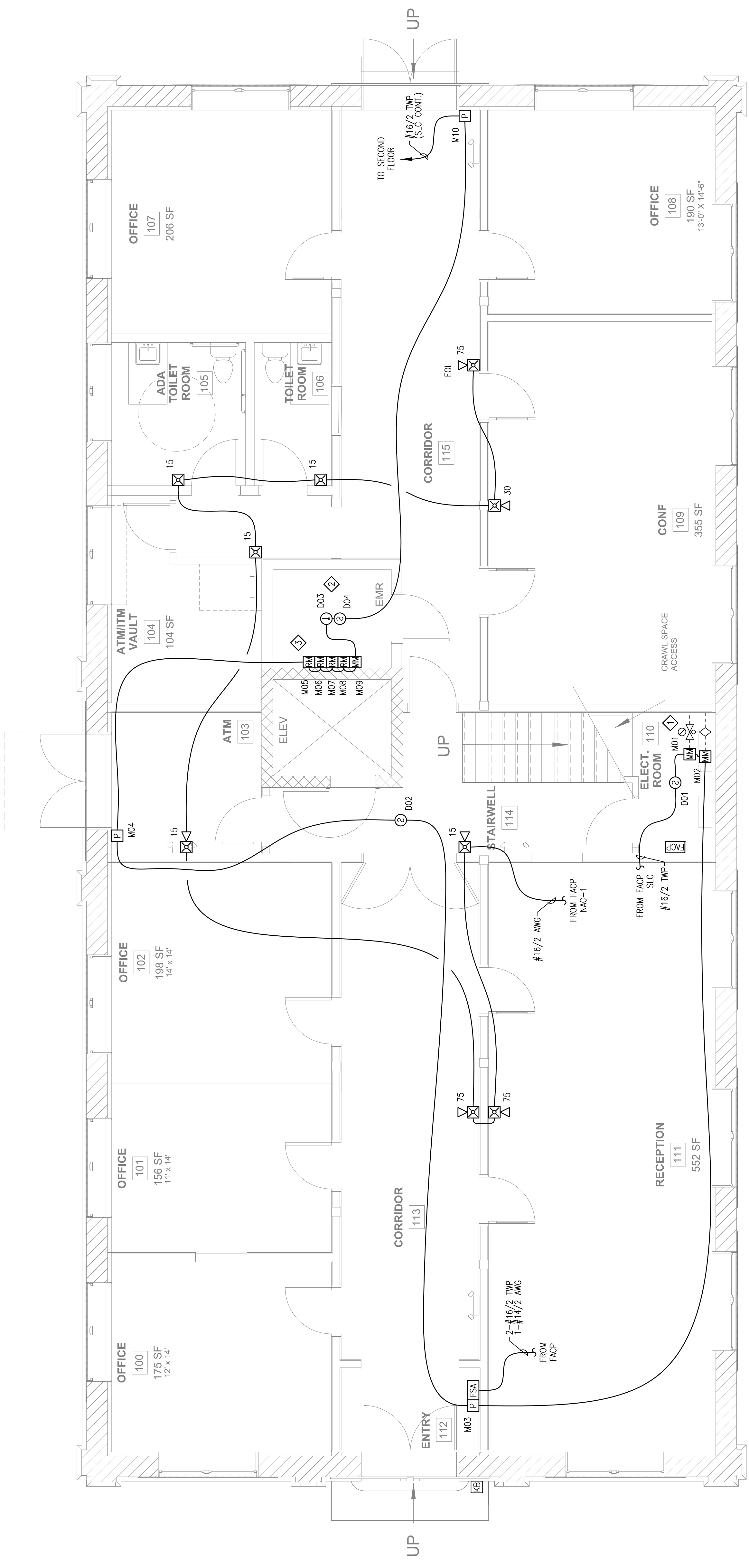
**CUNNINGHAM**  
Security Systems  
10 Princes Point Road, Yarmouth, Maine 04096  
Office: 207.846.3350 • Fax: 207.846.6080

**GRAND TRUCK BUILDING**  
1 INDIA STREET  
PORTLAND, MAINE 04101  
FIRST FLOOR FIRE ALARM PLAN

DRAWN	JPB UNICAD JOB #16672
CHECKED	WAYNE B. HAWES NICET # 90496
DATE	8/19/2016
REVISION	0
SCALE	1/4" = 1'-0"

**FA-2**

**UNICAD** Inc.  
Fire Alarm Design & Drafting Services  
www.unicad.net  
578 W. 40th St.  
Portland, ME 04102  
Office: 603.865.6410



**SHEET NOTES:**

- ◇ ADDRESSABLE MONITOR MODULE(S) PROVIDED TO MONITOR ALL WATER FLOW, PRESSURE SWITCHES, TAMPER SWITCHES AND POST INDICATING VALVES ASSOCIATED WITH THE SPRINKLER SYSTEM. INSTALLING CONTRACTOR SHALL FIELD VERIFY EXACT MOUNTING, CIRCUITING AND PROGRAMMING REQUIREMENTS. FIELD VERIFY EXACT QUANTITY AND LOCATION(S).
- ◇ PROVIDE HEAT DETECTOR(S) WITHIN 24" OF EACH SPRINKLER HEAD IN THE ELEVATOR CONTROL ROOM AND HOISTWAY(S). HEAT DETECTORS SHALL HAVE A LOWER TEMPERATURE RATING THAN THE SPRINKLERS IN THE AREA AND BE MONITORED FOR INTEGRITY.
- ◇ ADDRESSABLE RELAY MODULES (4) PROVIDED FOR THE ELEVATOR RECALL AND SHUT DOWN. DE TO ELEVATOR EQUIPMENT ROOM DETECTOR(S), HOISTWAY DETECTOR(S) AND LOBBY DETECTOR(S) TO INITIATE RECALL AND SHUT DOWN. ADDRESSABLE MONITOR MODULE PROVIDED TO MONITOR THE CONTROL CIRCUIT TO THE ELEVATOR SHUNT TRIP BREAKER FOR THE PRESENCE OF OPERATING VOLTAGE. LOSS OF VOLTAGE SHALL CAUSE A SUPERVISORY SIGNAL AT THE CONTROL PANEL. FIELD VERIFY EXACT MOUNTING, CIRCUITING AND PROGRAMMING REQUIREMENTS.