



7 SOUTH WEST IMAGE ELEVATION
NTS



8 WEST IMAGE ELEVATION
NTS

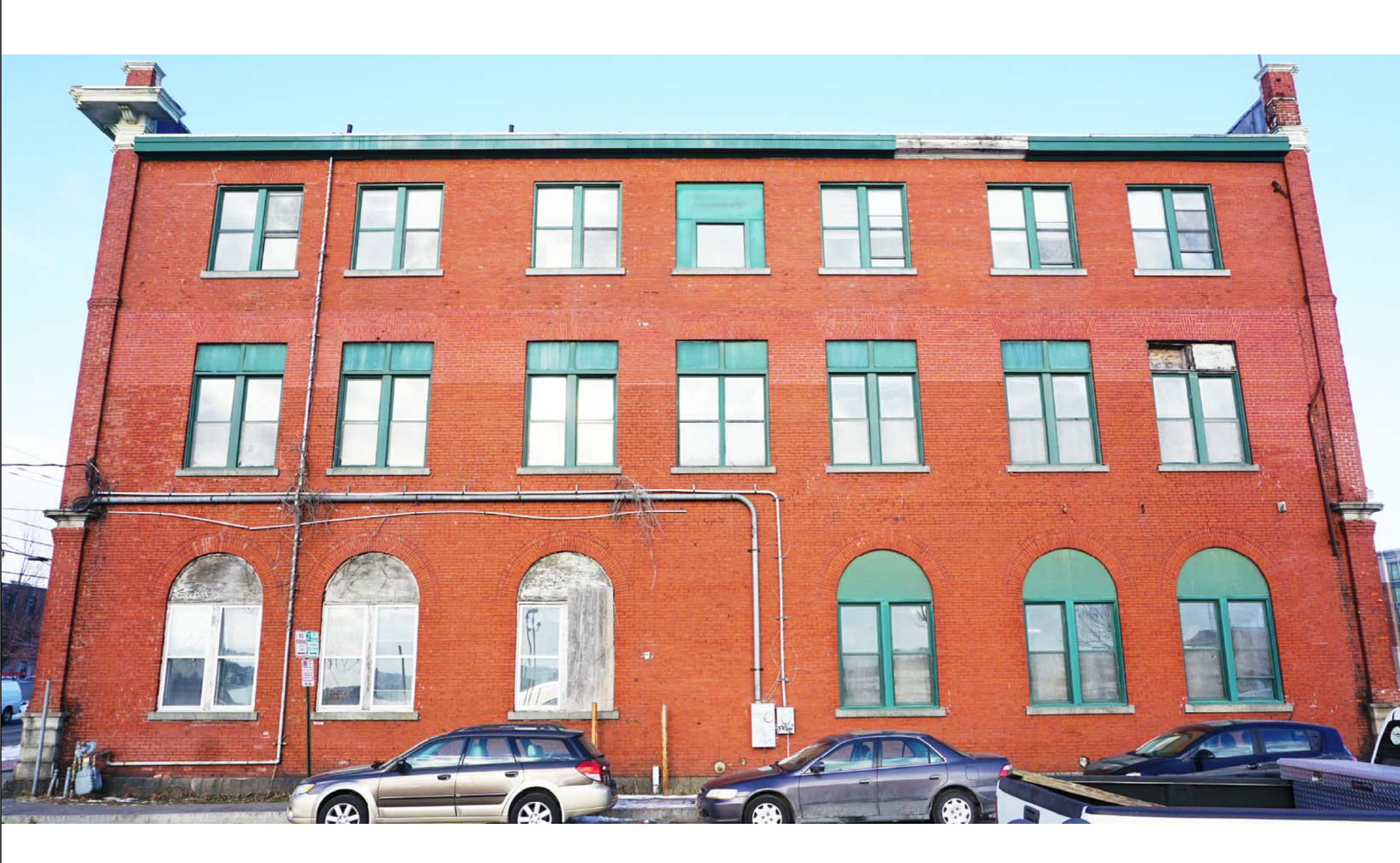
9 NOT USED
NTS



4 EAST IMAGE ELEVATION
NTS



5 SOUTH EAST IMAGE ELEVATION
NTS



6 SOUTH IMAGE ELEVATION
NTS



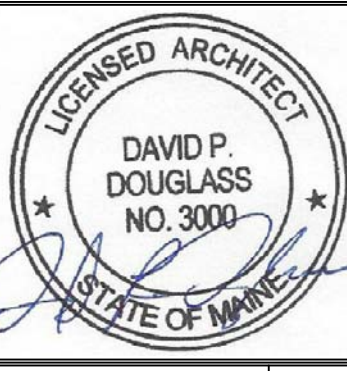
1 NORTH WEST IMAGE ELEVATION
NTS



2 NORTH IMAGE ELEVATION
NTS



3 NORTH EAST IMAGE ELEVATION
NTS



Prepared For:
GORHAM SAVINGS BANK
10 WENTWORTH DRIVE
GORHAM, ME 04038

Consultant:
Building Envelope Specialists
P.O. BOX 2897, SOUTH PORTLAND, MAINE 04116
PHONE: 207-880-0096

Architect:
ARCHETYPE architects
48 Union Wharf Portland, Maine 04101
(207) 772-6022 ARCHETYPE@ARCHETYPEPA.COM

Project:
GRAND TRUNK BUILDING
1 LINDA STREET
PORTLAND, ME

Revisions:

Date: MAR 10 2016
Scale: As indicated
ELEVATION IMAGES

BE00