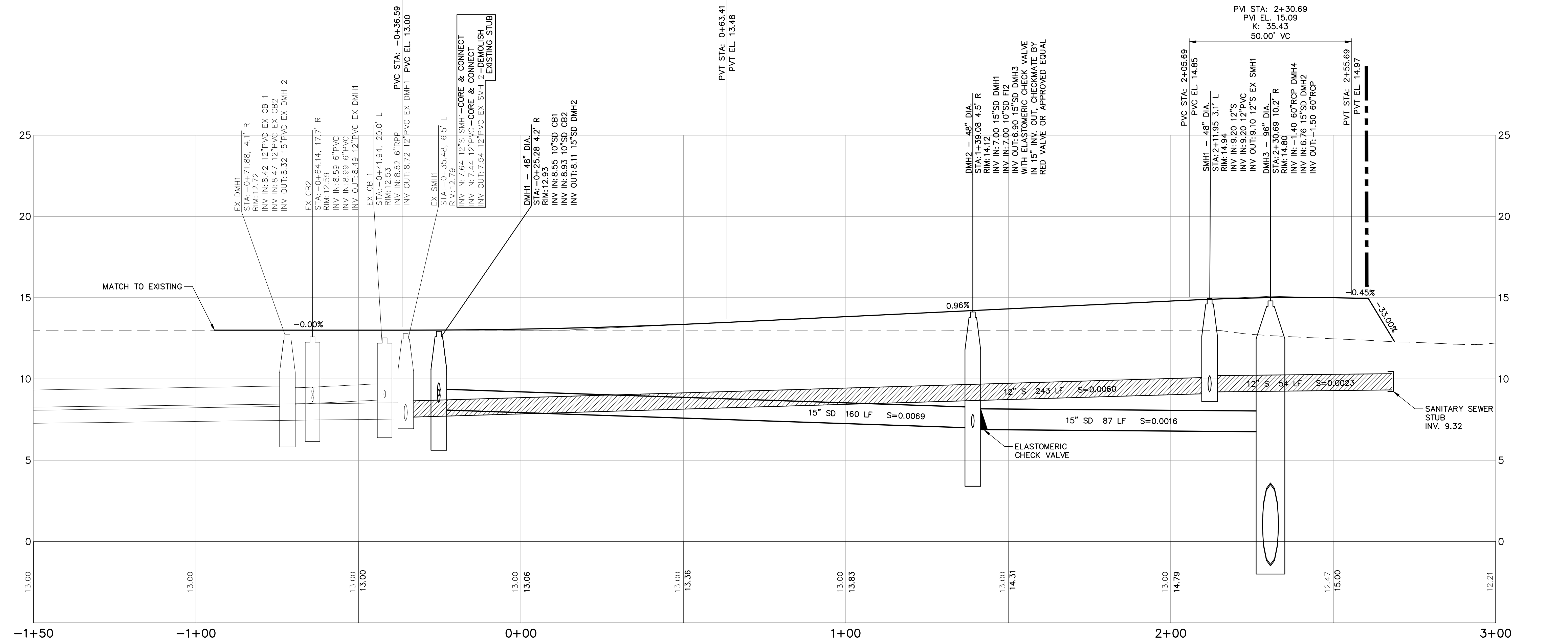


PIPE TABLE			
PIPE NAME	SIZE	LENGTH	SLOPE
PIPE S1	6" S	25'	0.0100
PIPE S2	12" PVC	45'	0.0100
PIPE S3	12" PVC	25'	0.0100
PIPE S4	12" PVC	51'	0.0023

**UTILITIES NOTES:**

- ALL PROPOSED UTILITIES (WATER, ELECTRIC, SANITARY, STORM SEWER, ETC.) AND THEIR CONNECTIONS, DISCONNECTION AND RELOCATION OF EXISTING UTILITIES SHALL BE COMPLETED IN ACCORDANCE WITH THE REQUIREMENTS OF THE UTILITY COMPANY HAVING JURISDICTION. ANY COORDINATION WITH THE MUNICIPALITY AND/OR UTILITY COMPANY, PERMITS OR APPROVALS REQUIRED SHALL BE THE RESPONSIBILITY OF THE CONTRACTOR.
- CONDUIT FOR ELECTRIC LINES SHALL BE WATER-TIGHT IN ADDITION TO CONFORMING TO UTILITY COMPANY REQUIREMENTS.
- COORDINATE CONSTRUCTION ACTIVITY WITH UTILITY COMPANIES, EMERGENCY SERVICES AND CITY. NOTIFY UTILITY COMPANIES AT LEAST 48 HOURS PRIOR TO WORK ACTIVITY ADJACENT TO THOSE UTILITIES.
- CONTRACTOR SHALL ARRANGE AND PREPARE FOR ALL NECESSARY TEMPORARY UTILITIES AS REQUIRED TO COMPLETE WORK, INCLUDING ANY NECESSARY SUB-METERING OR TEMPORARY CONNECTIONS.
- ALL WATER LINE (MAINS, SERVICES, HYDRANTS, ETC.) CONSTRUCTION SHALL BE COMPLETED IN ACCORDANCE WITH THE PORTLAND WATER DISTRICT TECHNICAL SPECIFICATIONS, LATEST EDITION. PORTLAND WATER DISTRICT TECHNICAL SPECIFICATIONS SHALL GOVERN IN THE CASE OF ANY AND ALL CONFLICTS IN THE PROJECT CONSTRUCTION DOCUMENTS AT NO ADDITIONAL COST TO OWNER.
- ALL GAS LINE (MAINS, SERVICES, GATE VALVES, METERS, ETC.) CONSTRUCTION SHALL BE COMPLETED IN ACCORDANCE WITH UNTIL'S TECHNICAL SPECIFICATIONS, LATEST EDITION. UNTIL'S TECHNICAL SPECIFICATIONS SHALL GOVERN IN THE CASE OF ANY AND ALL CONFLICTS IN THE PROJECT CONSTRUCTION DOCUMENTS AT NO ADDITIONAL COST TO OWNER.
- EXISTING UTILITIES SHOWN ON THESE PLANS WERE COMPILED FROM A FIELD SURVEY PREPARED BY OWEN HASKELL, INC. THESE PLANS DO NOT NECESSARILY DEPICT THE EXACT LOCATIONS OF ALL UTILITIES, WHICH MAY EXIST AT THIS TIME WITHIN THE SURVEY LIMITS. THERE MAY BE EXISTING LINES OTHER THAN THOSE INDICATED. THE LOCATIONS AND ELEVATIONS OF ALL EXISTING UTILITIES SHALL BE CONSIDERED APPROXIMATE AND MUST BE VERIFIED BY THE CONTRACTOR PRIOR TO ANY UTILITY CONNECTIONS OR CROSSINGS OF PROPOSED OR EXISTING UTILITIES. THE CONTRACTOR SHALL REPORT ANY DISCREPANCIES TO THE ENGINEER IN WRITING. THE CONTRACTOR SHALL CONTACT THE RESPECTIVE UTILITY COMPANIES RELATIVE TO THE LOCATIONS AND ELEVATIONS OF THESE LINES. NO SEPARATE OR ADDITIONAL COMPENSATION WILL BE ALLOWED TO THE CONTRACTOR DUE TO ANY VARIANCE BETWEEN THE DATA SHOWN ON THE PLANS AND ACTUAL FIELD CONDITIONS ENCOUNTERED. THE CONTRACTOR IS RESPONSIBLE FOR HIS/HER OWN DETERMINATION AS TO THE TYPE AND LOCATION OF THE EXISTING UTILITIES AS MAY BE NECESSARY TO AVOID DAMAGE AND TO FACILITATE THE PROPOSED CONNECTION(S).
- WHEREVER POSSIBLE, PROVIDE 10 FOOT HORIZONTAL SEPARATION BETWEEN WATER AND SEWER LINES. WHEN THIS HORIZONTAL SEPARATION IS NOT POSSIBLE, INSTALL SEWER LINE AT LEAST 18 INCHES BETWEEN BOTTOM OF WATER LINE AND TOP OF SEWER.
- FOR SEWER LINE CROSSING WATER LINE TRENCHES, PROVIDE AT LEAST 18 INCHES BETWEEN BOTTOM OF WATER LINE AND TOP OF SEWER.
- INSULATE ALL SEWER, FORCEMAINS AND WATER MAINS WHICH HAVE LESS THAN 4 FEET OF COVER OR WHERE DIRECTED BY THE ENGINEER. RIGID INSULATION REQUIRED: 2" THICK, BY 4" WIDE, UNLESS OTHERWISE NOTED. COSTS ASSOCIATED WITH INSULATION ARE INCIDENTAL TO CONTRACT.
- INSTALL THRUST BLOCKS AT ALL BENDS IN FORCEMAIN AND WATER MAIN. SEE CIVIL DETAIL ON SHEET xxxxx.
- PROVIDE END CAPS ON ALL UNDERDRAIN PIPING EXCEPT WHERE DAYLIGHTED, UNLESS OTHERWISE NOTED.
- PRIOR TO THE START OF CONSTRUCTION, CONTRACTOR SHALL DIG TEST PITS TO VERIFY THE LOCATION OF POTENTIAL EXISTING UNDERGROUND UTILITY CONFLICTS. CONTRACTOR SHALL VERIFY LOCATION AND ELEVATION OF ALL EXISTING UTILITIES AT PROPOSED UTILITY CROSSINGS, AND ADVISE THE ENGINEER IN WRITING OF ANY DISCREPANCIES.
- ALL PROPOSED UTILITIES AND THEIR CONNECTIONS, DISCONNECTION AND RELOCATION OF EXISTING UTILITIES SHALL BE COMPLETED IN ACCORDANCE WITH THE REQUIREMENTS OF THE UTILITY COMPANY HAVING JURISDICTION. ANY COORDINATION WITH THE MUNICIPALITY AND/OR UTILITY COMPANY, PERMITS OR APPROVALS REQUIRED SHALL BE THE RESPONSIBILITY OF THE CONTRACTOR.
- UNLESS OTHERWISE SPECIFIED, PIPE FOR STORM DRAINS SHALL BE MATERIAL OR APPROVED EQUAL, WITH WATER TIGHT JOINTS, PIPE JOINTS, FITTINGS AND OTHER APPURTENANCES SHALL BE IN ACCORDANCE WITH SECTION X.



41 Hutchins Drive  
Portland, Maine 04102  
800.426.4262 | www.woodardcurran.com

**WOODARD & CURRAN**

COMMITMENT & INTEGRITY DRIVE RESULTS

THIS DOCUMENT IS THE PROPERTY OF WOODARD & CURRAN INC. AND ITS CLIENT. IT IS TO BE USED ONLY FOR THE PROJECT, LOCATION, AND DATE SPECIFIED HEREON. IT IS NOT TO BE REPRODUCED, COPIED, OR TRANSMITTED IN ANY FORM OR BY ANY MEANS, ELECTRONIC OR MECHANICAL, WITHOUT THE WRITTEN PERMISSION OF WOODARD & CURRAN INC.

REV	DESCRIPTION	DATE

DESIGNED BY: KJT  
DRAWN BY: BCB

CHECKED BY: DAS  
DATE: 02/28/21

**UTILITY PLAN**

CITY OF PORTLAND  
PORTLAND, MAINE 04101

**THAMES STREET  
EXTENSION PROJECT**

JOB NO.: 0230637.37  
DATE: MAY 2018  
SCALE: 1"=20'  
SHEET: 5 OF 13

**C-102**

PERMITTING SET - NOT FOR CONSTRUCTION