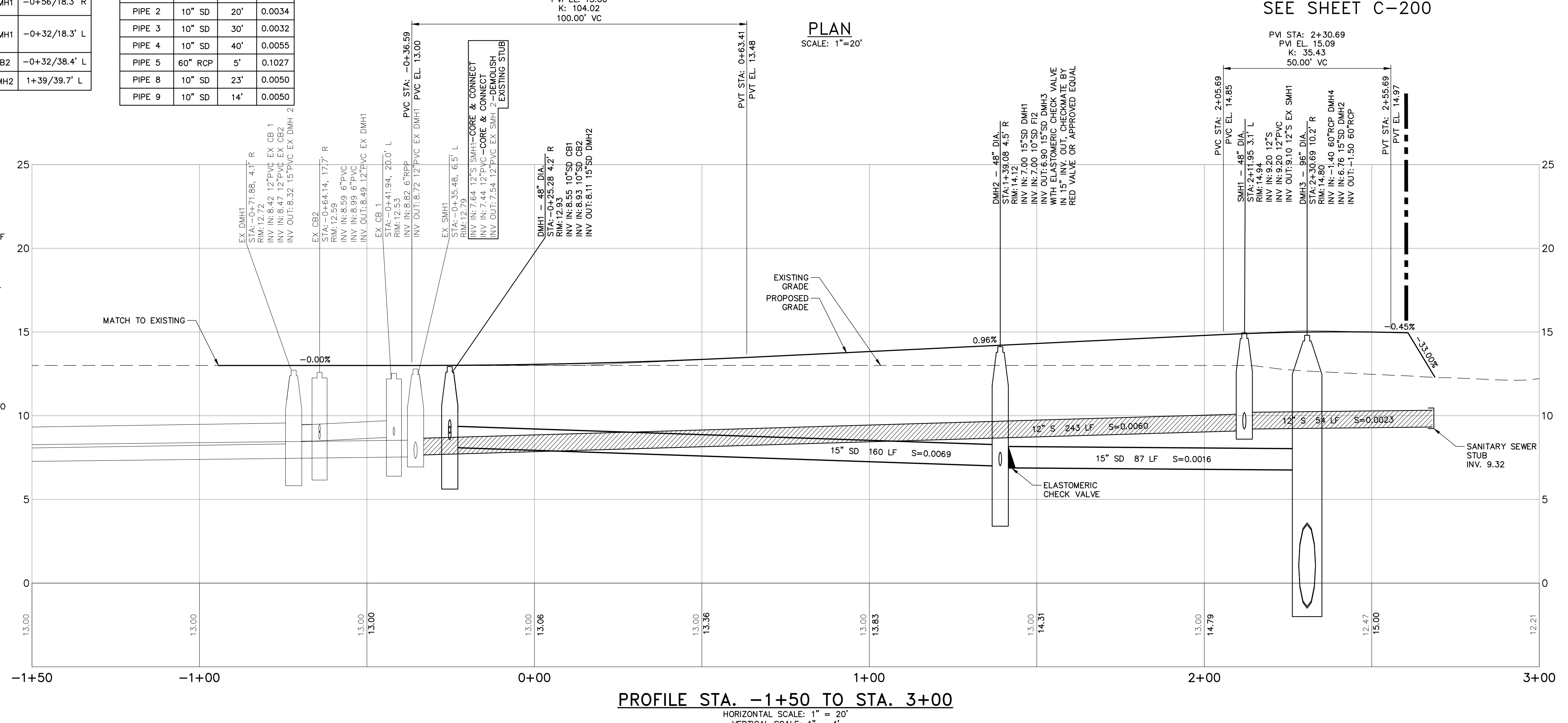


STRUCTURE TABLE					
NAME	DIA.	RIM	INV IN/SIZE/FROM	INV OUT/SIZE/TO	STA./OFFSET
CB1	4'	12.48	8.97 6"UD 9.96 6"UD	8.64 10"SD DMH1	-0+56/18.3' R
CB2	4'	12.47	9.10 10"SD FI 9.43 6"UD 7.98 6"UD	9.00 10"SD DMH1	-0+32/18.3' L
FI1	2'	12.89		9.20 10"SD CB2	-0+32/38.4' L
FI2	2'	12.76		7.22 10"SD DMH2	1+39/39.7' L

PIPE TABLE			
PIPE NAME	SIZE	LENGTH	SLOPE
PIPE 1	10" SD	16'	0.0062
PIPE 2	10" SD	20'	0.0034
PIPE 3	10" SD	30'	0.0032
PIPE 4	10" SD	40'	0.0055
PIPE 5	60" RCP	5'	0.1027
PIPE 8	10" SD	23'	0.0050
PIPE 9	10" SD	14'	0.0050

**GRADING AND DRAINAGE NOTES:**

- CASTINGS FOR EXISTING STRUCTURES TO REMAIN AND PROPOSED STRUCTURES SHALL BE SET TO THE PROPOSED ELEVATIONS SHOWN ON THE DRAWINGS.
- UNSATURABLE FILL AND BACKFILL MATERIALS ARE MATERIALS CONTAINING EXCESSIVE AMOUNT OF WATER, PLASTIC, CLAY, VEGETATION, ORGANIC MATTER, DEBRIS, PAVEMENT, STONES OR BOULDERS OVER 12 INCHES IN GREATEST DIMENSION, FROZEN MATERIAL, AND MATERIAL WHICH, IN THE OPINION OF THE ENGINEER, WILL NOT PROVIDE A SUITABLE FOUNDATION OR SUBGRADE.
- SUITABLE SOIL SHALL BE PLACED IN LAYERS TO THE REQUIRED ELEVATIONS AS SHOWN ON THE DRAWINGS. FILL, BACKFILL AND COMPACT TO PRODUCE MINIMUM SUBSEQUENT SETTLEMENT OF THE MATERIAL AND PROVIDE ADEQUATE SUPPORT FOR THE SURFACE TREATMENT OR STRUCTURE TO BE PLACED ON THE MATERIAL. PLACE MATERIAL IN APPROXIMATELY HORIZONTAL LAYERS OF BEGINNING AT LOWEST AREA TO BE FILLED. DO NOT IMPAIR DRAINAGE. DO NOT USE ON-SITE TOPSOIL AS FILL MATERIAL.
- FOR GROUND SURFACE PREPARATION, CONTRACTOR SHALL REMOVE VEGETATION, DEBRIS, UNSUITABLE SOIL MATERIALS, OBSTRUCTIONS, AND DELETERIOUS MATERIALS FROM GROUND SURFACE PRIOR TO PLACEMENT OF FILL. REMOVE MATERIAL TO THE FULL EXTENT OF ROOT PENETRATION. PROOF-ROLL EXISTING GROUND SURFACE PRIOR TO PLACEMENT OF FILL TO PROVIDE A DENSE, STABLE BASE FOR THE FIRST LIFTS OF THE STRUCTURAL FILL.



PROFILE STA. -1+50 TO STA. 3+00  
HORIZONTAL SCALE: 1" = 20'  
VERTICAL SCALE: 1" = 4'

SEE SHEET C-200

41 Hutchins Drive  
Portland, Maine 04102  
800.426.4262 | www.woodardcurran.com

**WOODARD & CURRAN**  
COMMITMENT & INTEGRITY DRIVE RESULTS

THIS DOCUMENT IS THE PROPERTY OF WOODARD & CURRAN INC. AND ITS CLIENT. IT IS TO BE USED ONLY FOR THE PROJECT AND LOCATION SPECIFICALLY IDENTIFIED. REPRODUCTION OR TRANSMISSION IS PROHIBITED.

REV	DESCRIPTION	DATE

DESIGNED BY: KUT  
CHECKED BY: DAS  
DRAWN BY: BCB

**SITE GRADING & DRAINAGE PLAN**

CITY OF PORTLAND  
PORTLAND, MAINE 04101

**THAMES STREET  
EXTENSION PROJECT**

JOB NO.: 0230637.00  
DATE: MAY 2018  
SCALE: 1" = 20'  
SHEET: 4 OF 13

**C-101**

PERMITTING SET - NOT FOR CONSTRUCTION