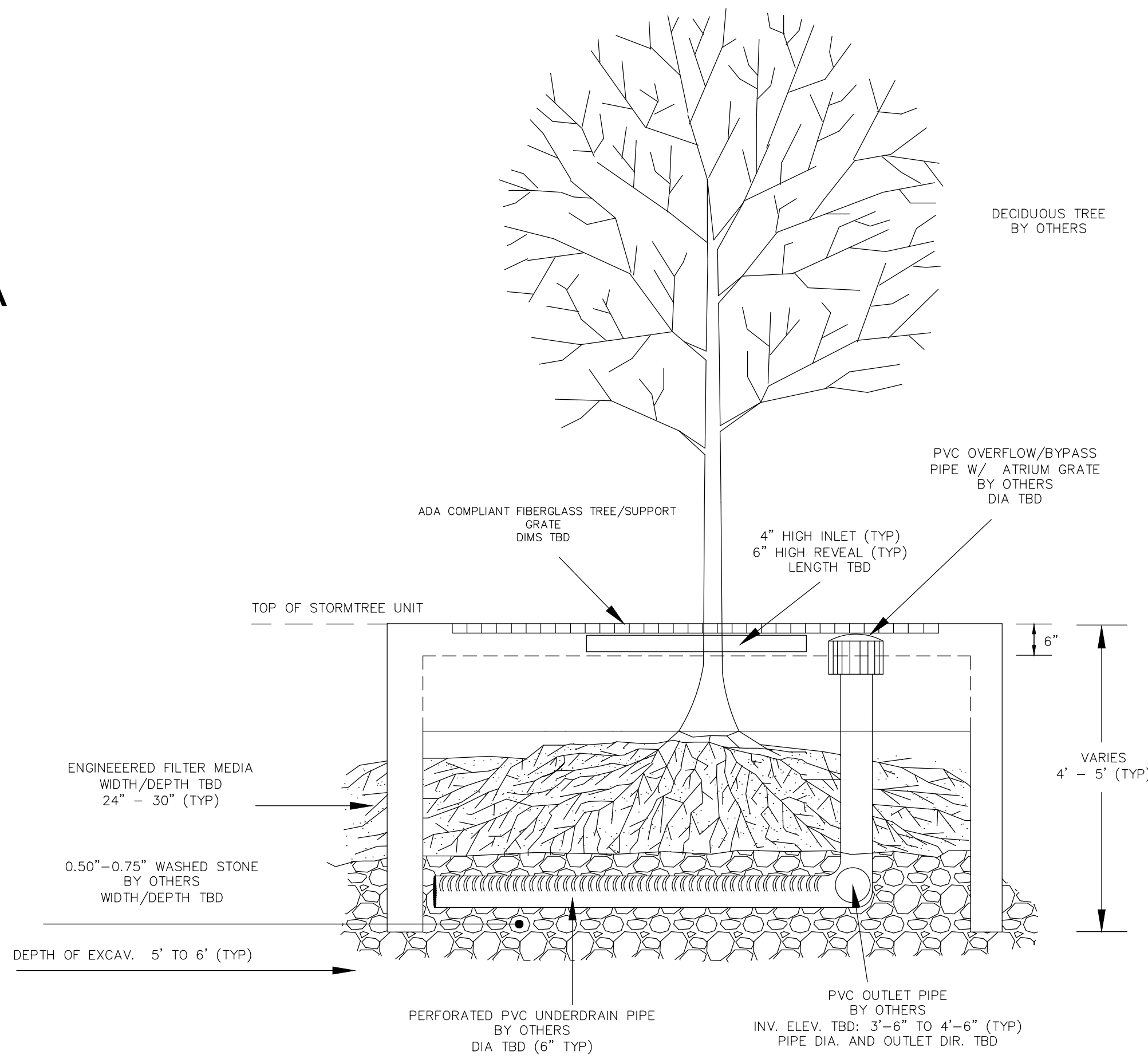
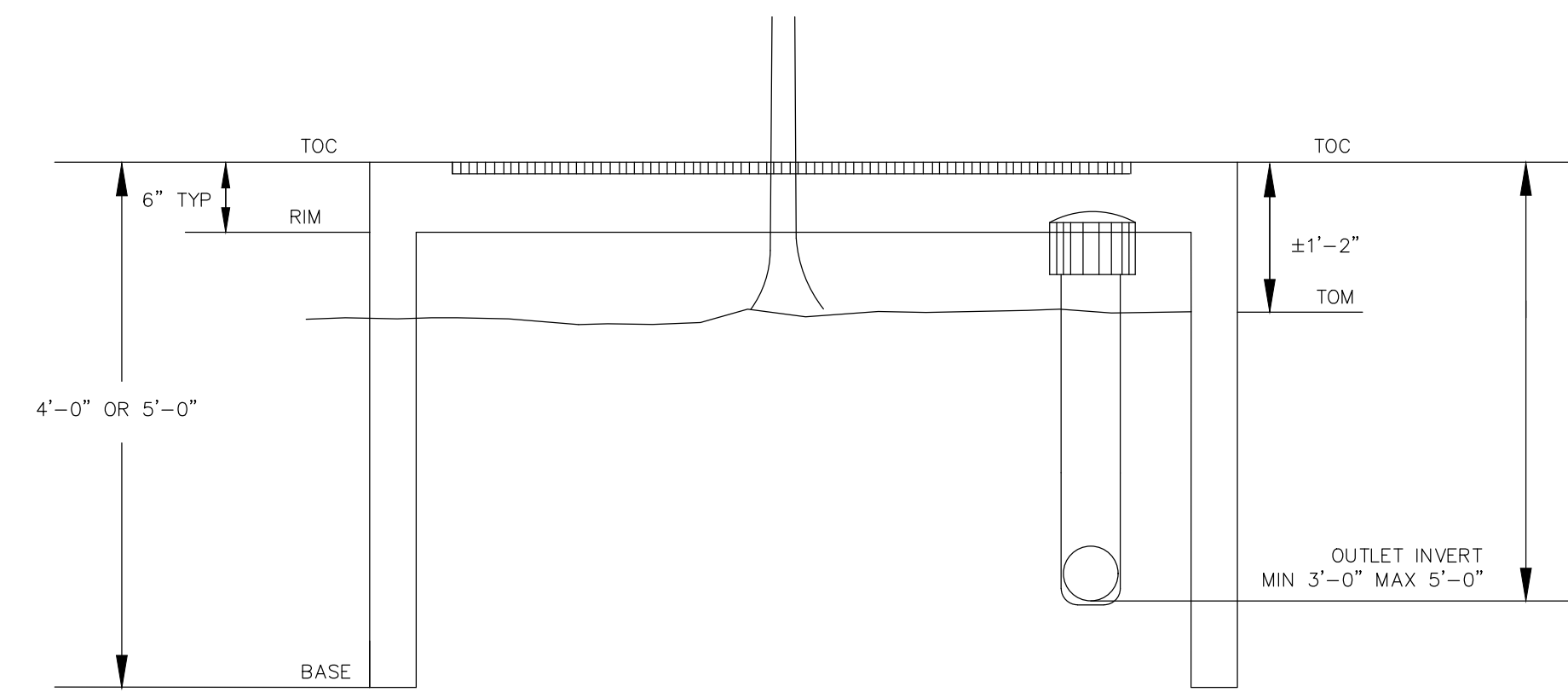


PLAN VIEW
N.T.S.

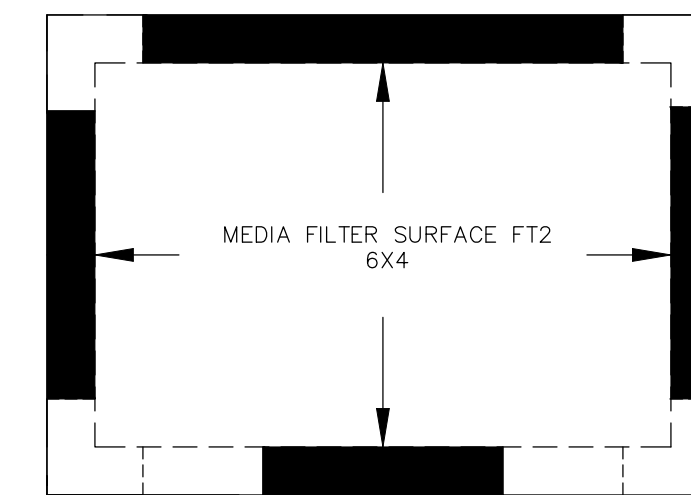


SECTION A-A
N.T.S.

STORMTREE BASE SERIES
N.T.S.



RIM/TOC/INVERT ELEVATIONS
N.T.S.



CONFIGURATIONS/SIZING
N.T.S.

STORMTREE NOTES:

- IT IS RECOMMENDED THAT THE DESIGN ENGINEER COMPLETE THE PRODUCT DESIGN WORKSHEET AND/OR CONTACT STORMTREE DIRECTLY TO DETERMINE PROPER SIZING.
- STORMTREER TO PROVIDE PRECAST CONCRETE FRAME WITH MINIMUM H-20 CURB LOADING CAPACITY; ENGINEERED MEDIA; ADA COMPLIANT FIBERGLASS SUPPORT/TREE GRATE WITH MINIMUM 500 LBS/FT2 LOADING CAPACITY; MEDIA SEPARATOR SCREEN. CONTRACTOR(S) TO PROVIDE MATERIALS AS NOTED, "BY OTHERS". STORMTREER WILL PROVIDE A CONSTRUCTION PLAN TO THE INSTALLATION CONTRACTOR PRIOR TO PROJECT INITIATION.
- AN IMPERVIOUS LINER MAY BE USED WITH ALL UNITS IF DIRECT INFILTRATION (BIOINFILTRATION) IS NOT DESIRABLE.
- ENGINEER/SPECIFIER MAY IDENTIFY SPECIFIC PIPING DIAMETERS/DIMENSIONS ON THIS PLAN PAGE TO FACILITATE SITE CATCHMENT AND DRAINAGE REQUIREMENTS AND CONNECTIONS TO NEW OR EXISTING FACILITIES. APPROVED (D) DIMENSIONS ARE 6" & 8". OTHER DIAMETER PIPING MAY BE SPECIFIED BASED ON PROJECT DISCUSSION AND THE APPROVAL OF STORMTREE.
- THE DIMENSIONS OF THE ENGINEERED FILTRATION MEDIA BED AND UNDERLYING STONE BASIN MAY MATCH TREE FILTER FRAME DIMENSIONS, OR EXTEND OUTWARD BEYOND FOOTPRINT OF PRECAST FRAME TO FACILITATE ADDITIONAL INFILTRATION REQUIREMENTS AND/OR SUBSURFACE STORAGE.
- USE OF THIS INFORMATION IS WITH THE PERMISSION OF STORMTREE WITH THE UNDERSTANDING THAT NO CHANGES OR ALTERNATIONS ARE TO BE MADE TO THE DESIGN, FABRICATION, OR UTILITY OF THIS STORMTREE TREEM FILTER SYSTEM (US PAT NO. 8333885 AND OTHER PATENTS PENDING) WITHOUT THE EXPRESSED PERMISSION OF STORMTREER. 401-626-8999; WWW.STORM-TREE.COM.

41 Hutchins Drive
Portland, Maine 04102
800.426.4262 | www.woodardcurran.com

WOODARD & CURRAN
COMMITMENT & INTEGRITY DRIVE RESULTS

THIS DOCUMENT IS THE PROPERTY OF WOODARD & CURRAN INC. AND ITS CLIENT. REPRODUCTION OR DISTRIBUTION WITHOUT WRITTEN PERMISSION IS PROHIBITED.

REV	DESCRIPTION	DATE

DESIGNED BY: KJT
DRAWN BY: BCX
CHECKED BY: DAS
DATE: 02/08/2018

CIVIL DETAILS - 5

CITY OF PORTLAND
PORTLAND, MAINE 04101

THAMES STREET
EXTENSION PROJECT

JOB NO.: 0230637.37
DATE: MAY 2018
SCALE: AS NOTED
SHEET: 13 OF 13

C-305

PERMITTING SET - NOT FOR CONSTRUCTION

D:\woodardcurran.net\shared\Projects\0230637.00 - Portland ME - 2017 Gnd Eng Srvs\wb\37 Eastern Waterfront Roadway Ext Design\Drawings\Civil\0230637.37 C305.dwg, May 04, 2018 - 3:12pm