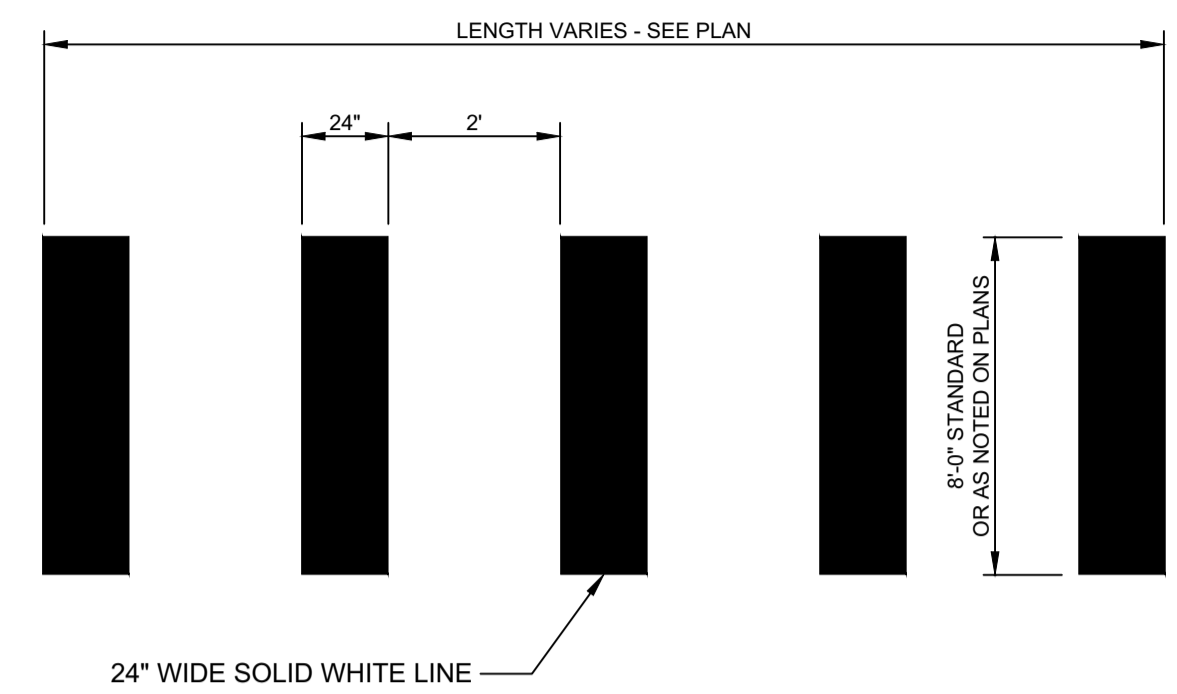


DATE of APPROVAL October 4, 2017
 PLANNER Caitlin Cameron
 PROJECT NO. 2017-180
 Scarborough, Maine 04074-8929
 Tel. 207.883.3355
 www.stantec.com

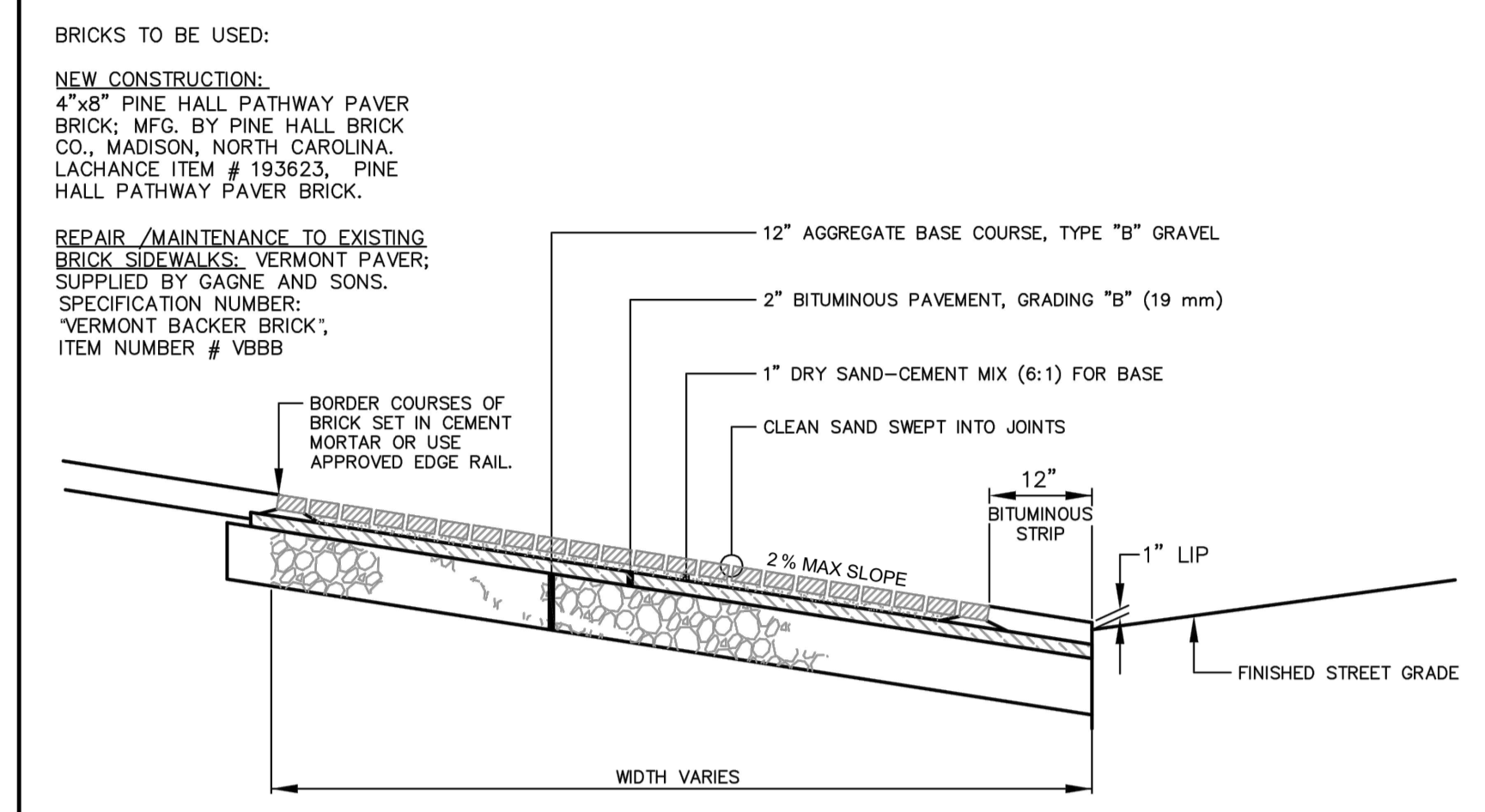
Copyright Reserved
 The Contractor shall verify and be responsible for all dimensions. DO NOT scale the drawing - any errors or omissions shall be reported to Stantec without delay.
 The Copyrights to all designs and drawings are the property of Stantec. Reproduction or use for any purpose other than that authorized by Stantec is forbidden.

Consultants
 ARCHITECT ARCHETYPE
 LANDSCAPE ARCHITECT MOHR & SEREDIN
 SURVEYOR OWEN HASKELL
 CONTRACTOR CIANBRO

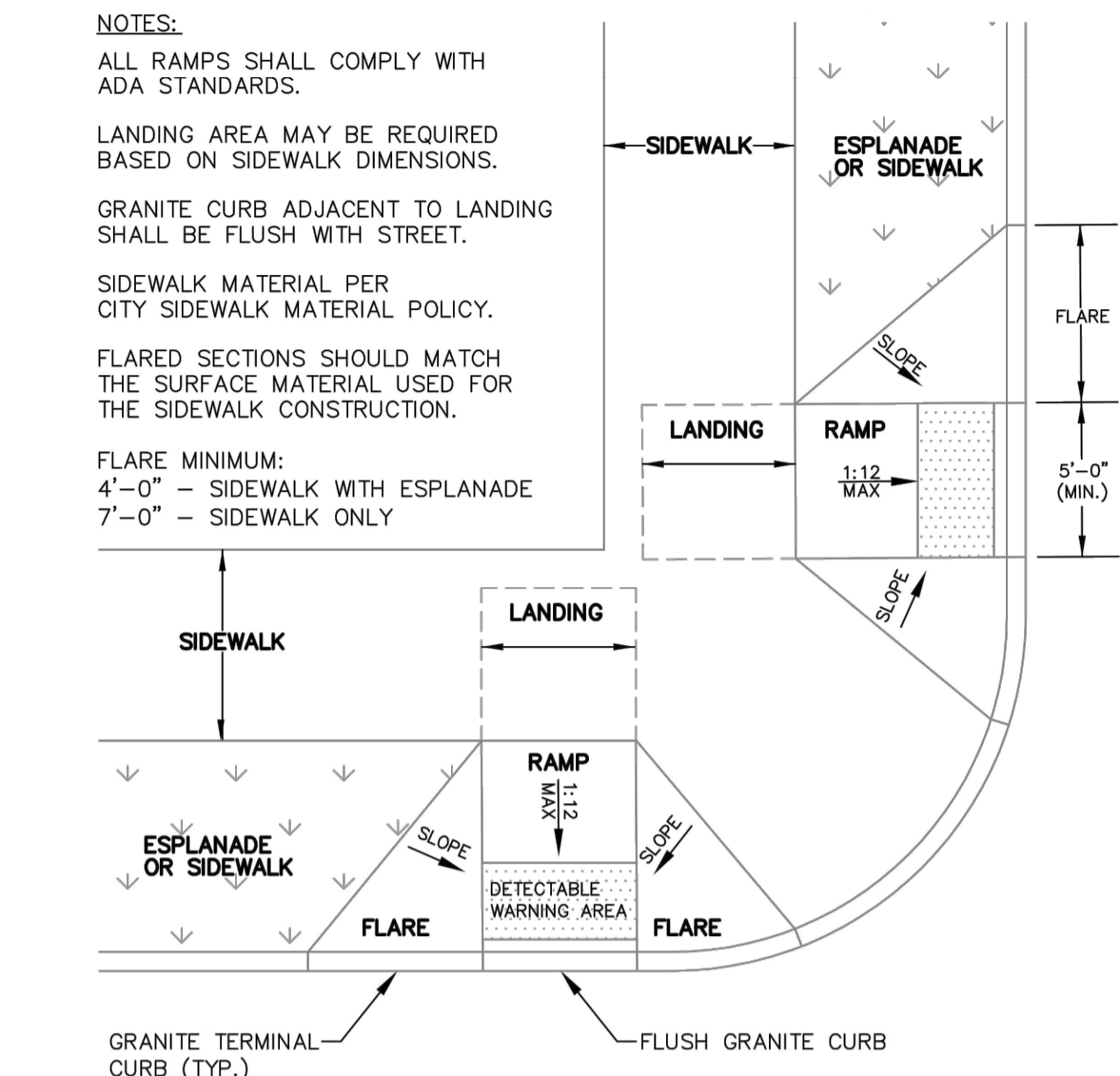
Notes



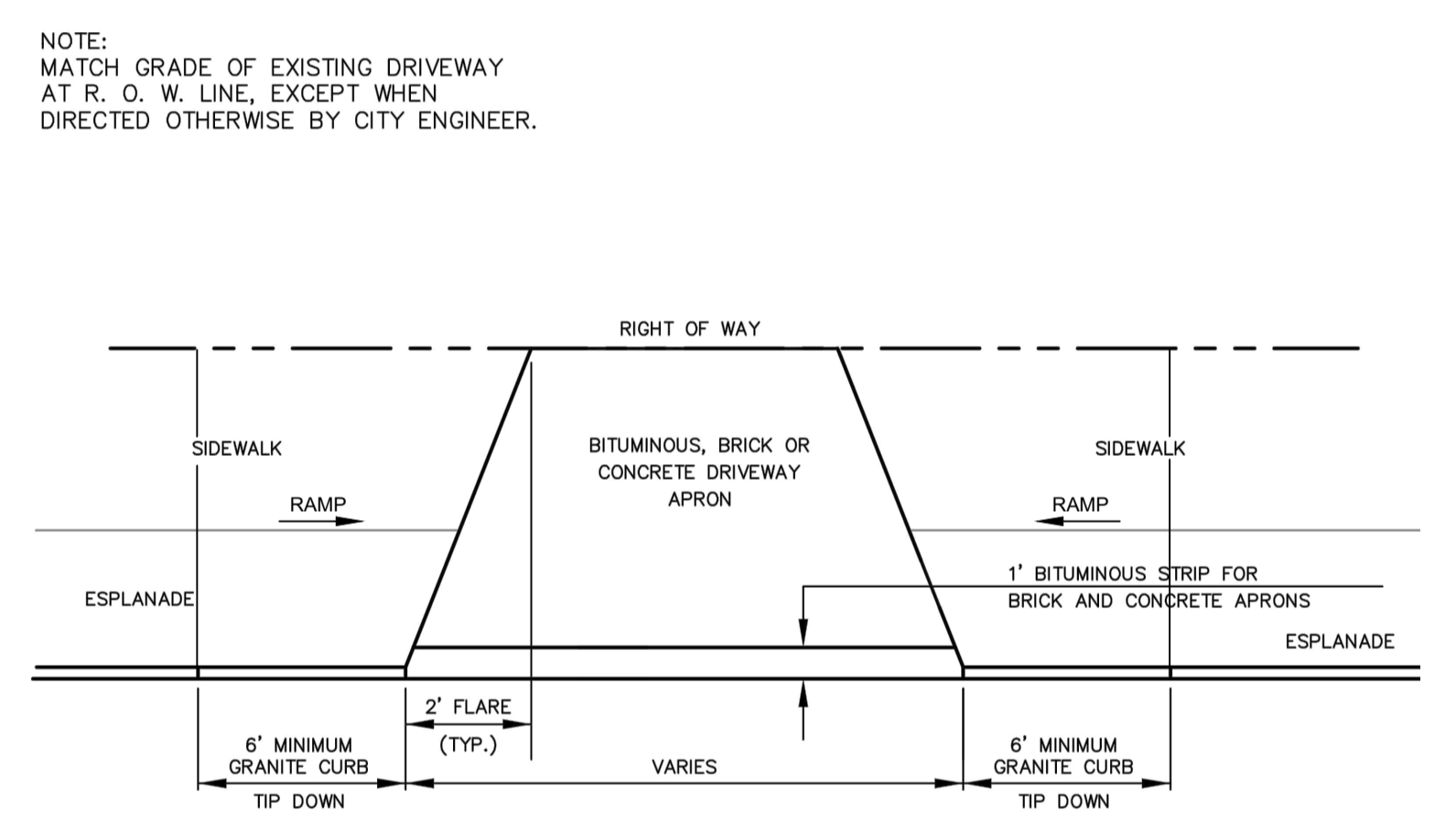
A CROSSWALK STRIPING DETAIL
 N.T.S.



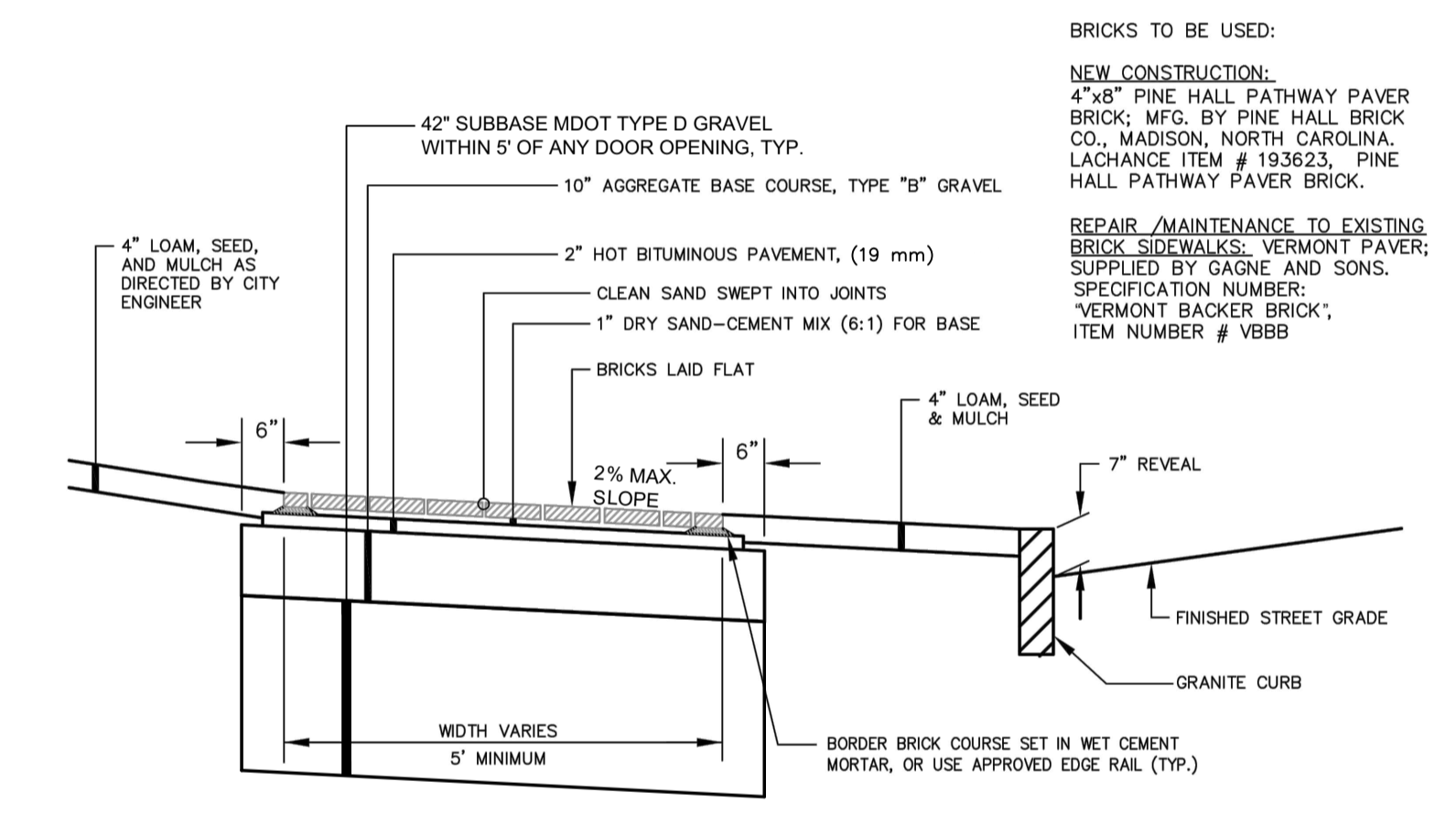
D BRICK DRIVEWAY APRON WITH BITUMINOUS BASE
 N.T.S.



G PREFERRED SIDEWALK RAMP AT INTERSECTION
 N.T.S. AS OBTAINED FROM THE CITY OF PORTLAND "TECHNICAL MANUAL"

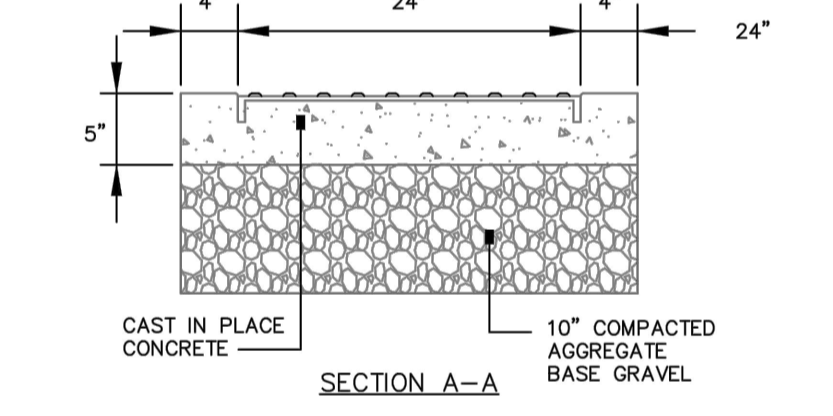


B DRIVEWAY APRON LAYOUT
 N.T.S.

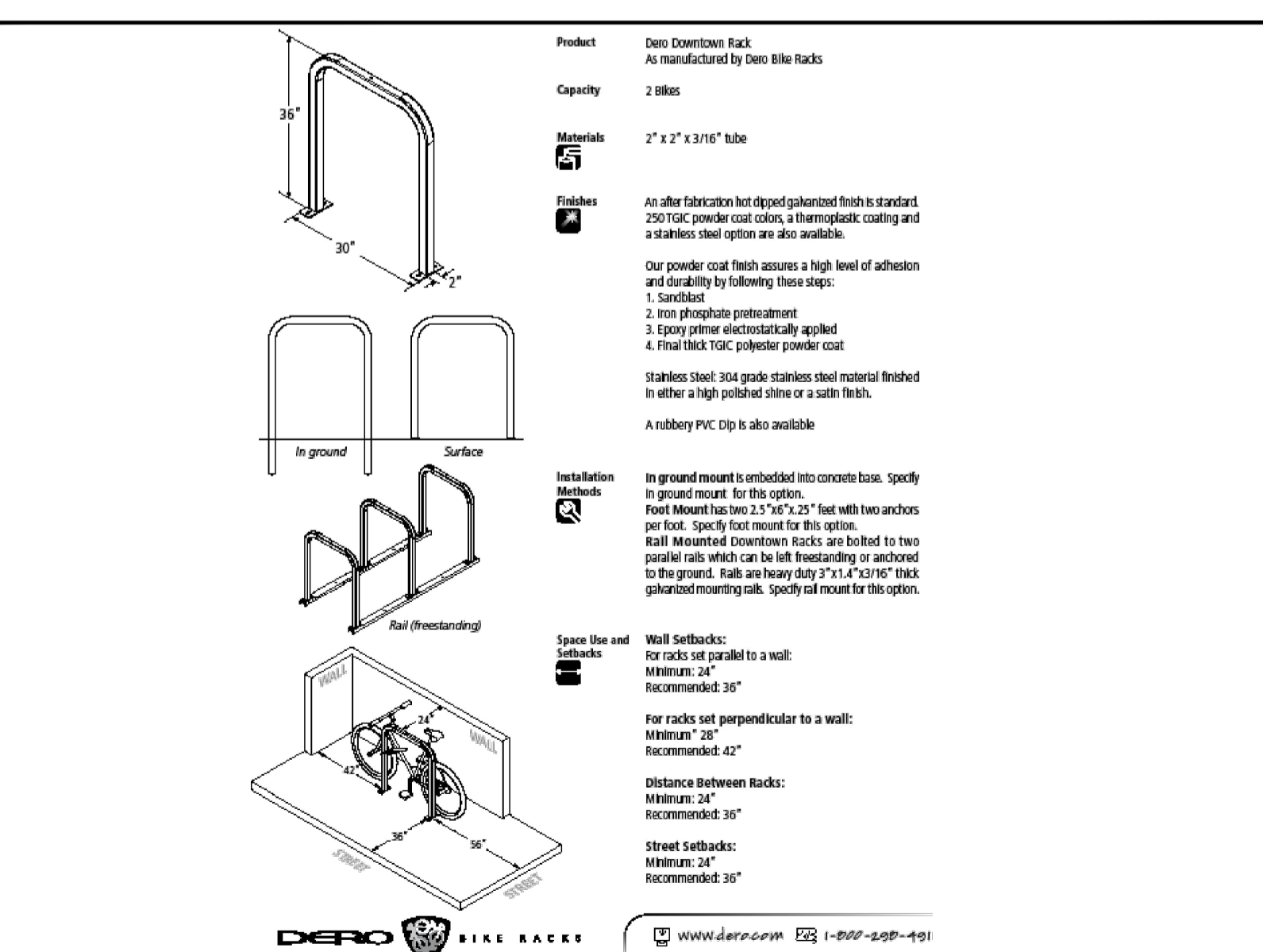


E BRICK SIDEWALK WITH BITUMINOUS BASE
 N.T.S. AS OBTAINED FROM THE CITY OF PORTLAND "TECHNICAL MANUAL"

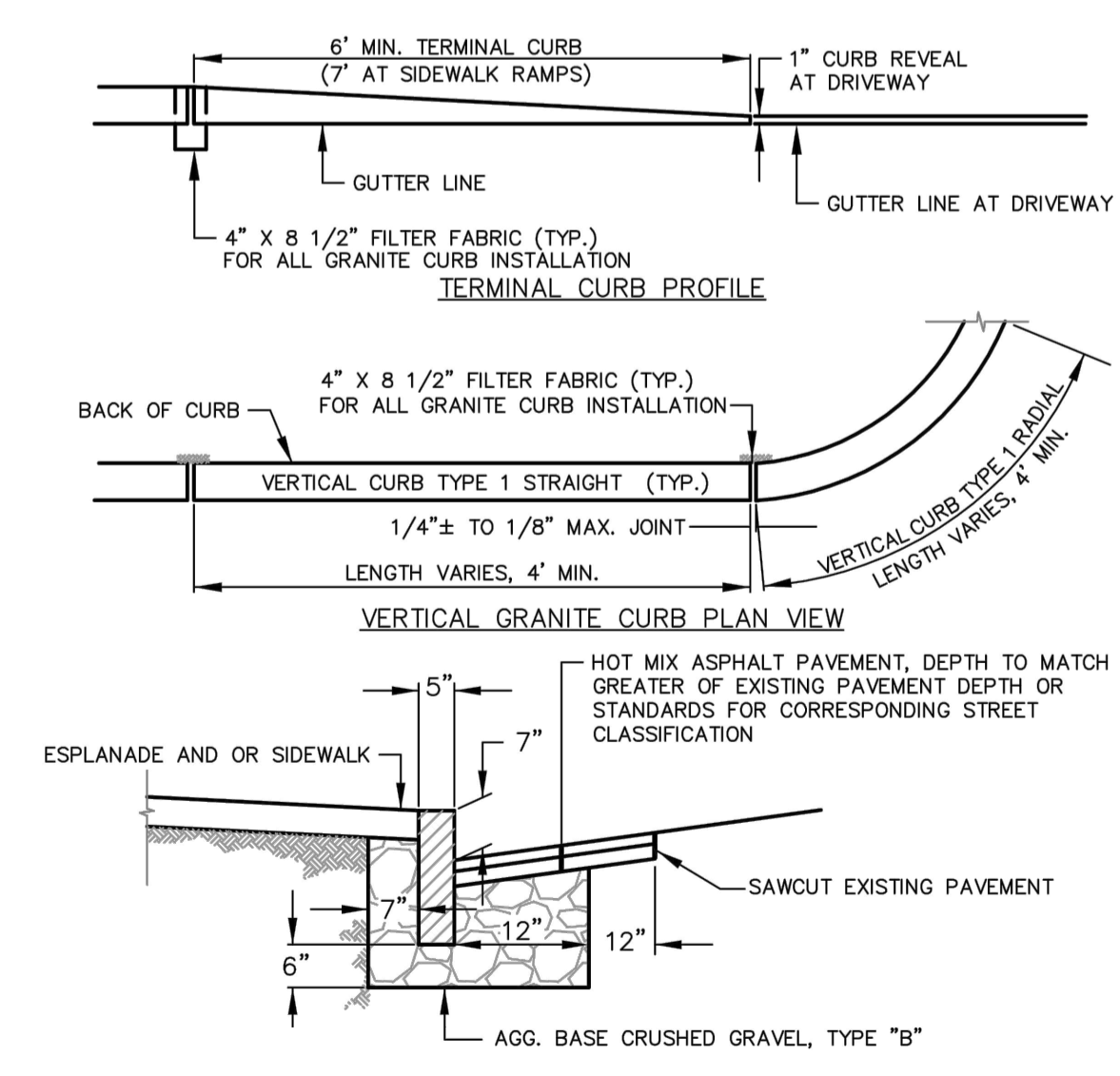
- NOTES:
- ALL DETECTABLE WARNING PLATES SHALL BE UNCOATED CAST IRON. FOLLOW MANUFACTURER'S INSTRUCTIONS FOR INSTALLATION.
 - CAST IN PLACE CONCRETE SHALL MEET SPECIFICATIONS FOR MDOT CLASS A STRUCTURAL CONCRETE, MINIMUM COMPRESSIVE STRENGTH 4,000 PSI. THE EXPOSED CONCRETE BORDER SHALL RECEIVE A UNIFORM BROOM FINISH PERPENDICULAR TO THE FLOW OF PEDESTRIAN TRAFFIC.
 - TRUNCATED DOMES SHALL BE ALIGNED IN ROWS, PARALLEL AND PERPENDICULAR TO THE PREDOMINANT DIRECTION OF TRAVEL. TRUNCATED DOME BRICKS AND GRANITE PAVERS ARE NOT ALLOWED.
 - SIZE: THE DETECTABLE WARNING PLATES SHALL EXTEND 24 INCHES MINIMUM IN THE DIRECTION OF TRAVEL AND THE FULL WIDTH OF THE CURB RAMP, LANDING, OR BLENDED TRANSITION TO THE STREET.
 - ORIENTATION: THE DETECTABLE WARNING PANEL SHALL BE LOCATED SO THAT THE EDGE NEAREST THE CURB LINE IS 6 INCHES MINIMUM AND 8 INCHES MAXIMUM FROM THE CURB LINE. THE PANEL SHALL BE ORIENTED TO THE DIRECTION OF TRAVEL AS IDENTIFIED BY THE POINT OF EGRESS.



H SIDEWALK RAMP DETECTABLE WARNING PANEL
 N.T.S. AS OBTAINED FROM THE CITY OF PORTLAND "TECHNICAL MANUAL"



C BICYCLE RACK SPECIFICATION - DOWNTOWN RACK
 N.T.S.



F VERTICAL GRANITE CURB INSTALLATION IN EXIST. STREETS
 N.T.S. AS OBTAINED FROM THE CITY OF PORTLAND "TECHNICAL MANUAL"

NO.	REVISION	DATE	BY	APPROVED
1	FINAL PLAN REVIEW	12/28/16	SRB	YTW/DCD
2	RE-REVIEW FOR PUBLIC HEARING	12/29/16	SRB	
3	REVISED PER CONDITIONS OF APPROVAL RELEASED FOR BIDDING	17/01/17	SRB	
4	REVISED FOR CONSTRUCTION PLANS	17/02/17	SRB	
5	REVISED FOR CONSTRUCTION PLANS PER CITY COMMENTS	17/03/17	SRB	

File Name:	LA	DWS	SRB	17.07.12	
195350450_det	P.E. STEPHEN R. BUSHEY	DWN.	CHKD.	DSGN.	DATE

Permit-Seal
 STATE OF MAINE
 STEPHEN R. BUSHEY
 No. 742B
 LICENSED PROFESSIONAL ENGINEER

Client/Project
 0 HANCOCK STREET LLC

THAMES STREET SITE
 PORTLAND, MAINE

Title
 LANDSCAPE, SITE AND SIDEWALK DETAILS

Project No. 195350450
 Scale N.T.S.

Sheet

V:\195350450\195350450\195350450\195350450.dwg, plot: p:\plotters\195350450.dwg, 10/24/2017 2:47 PM