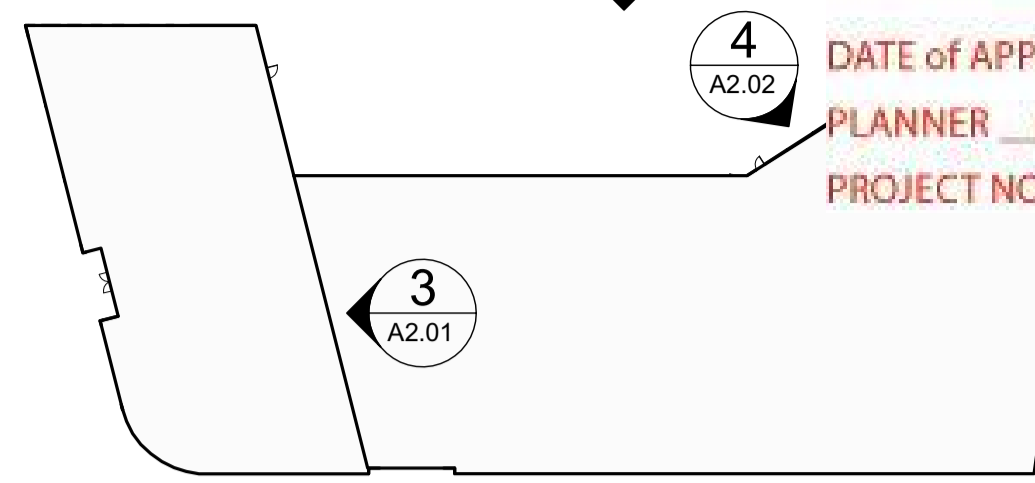


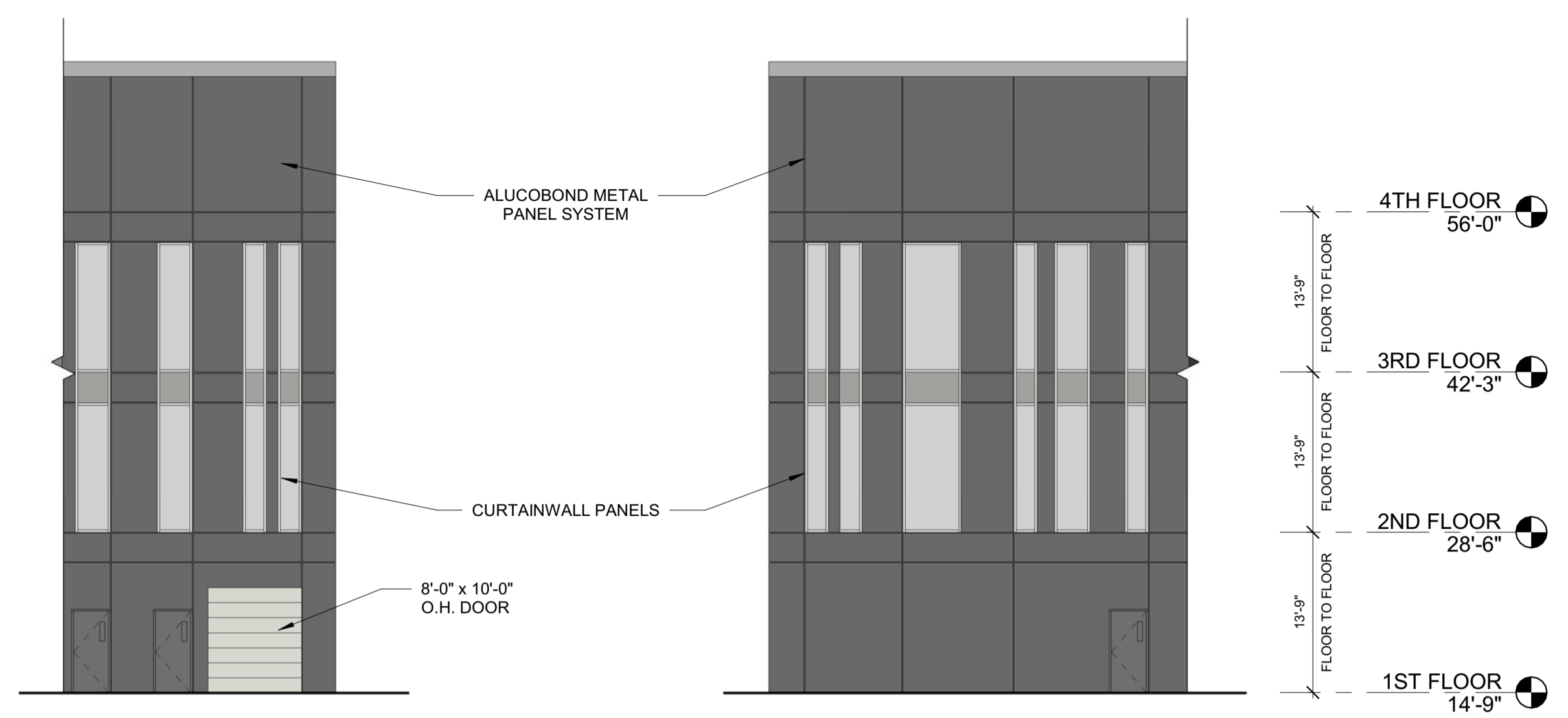
DATE of APPROVAL October 4, 2017

PLANNER Caitlin Cameron

PROJECT NO. 2017-180

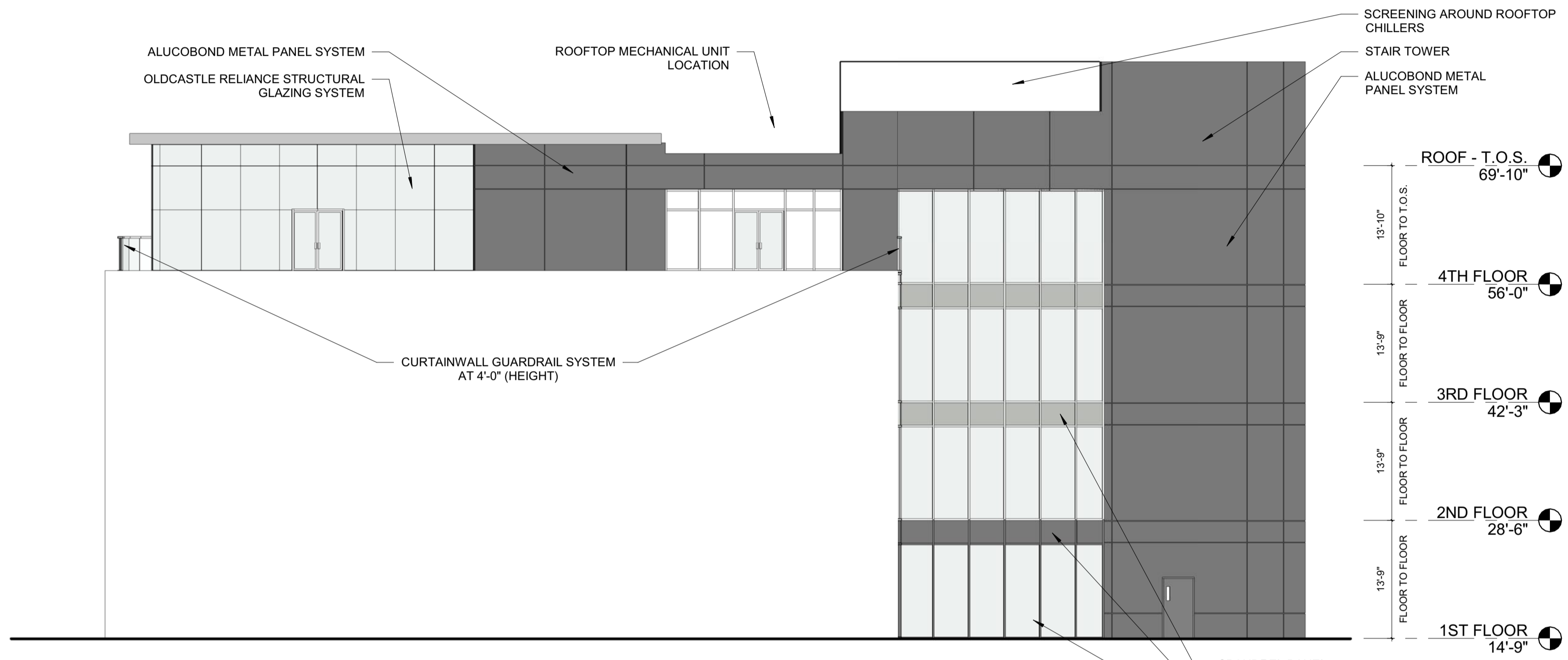


6 | KEY PLAN
 1" = 60'-0"

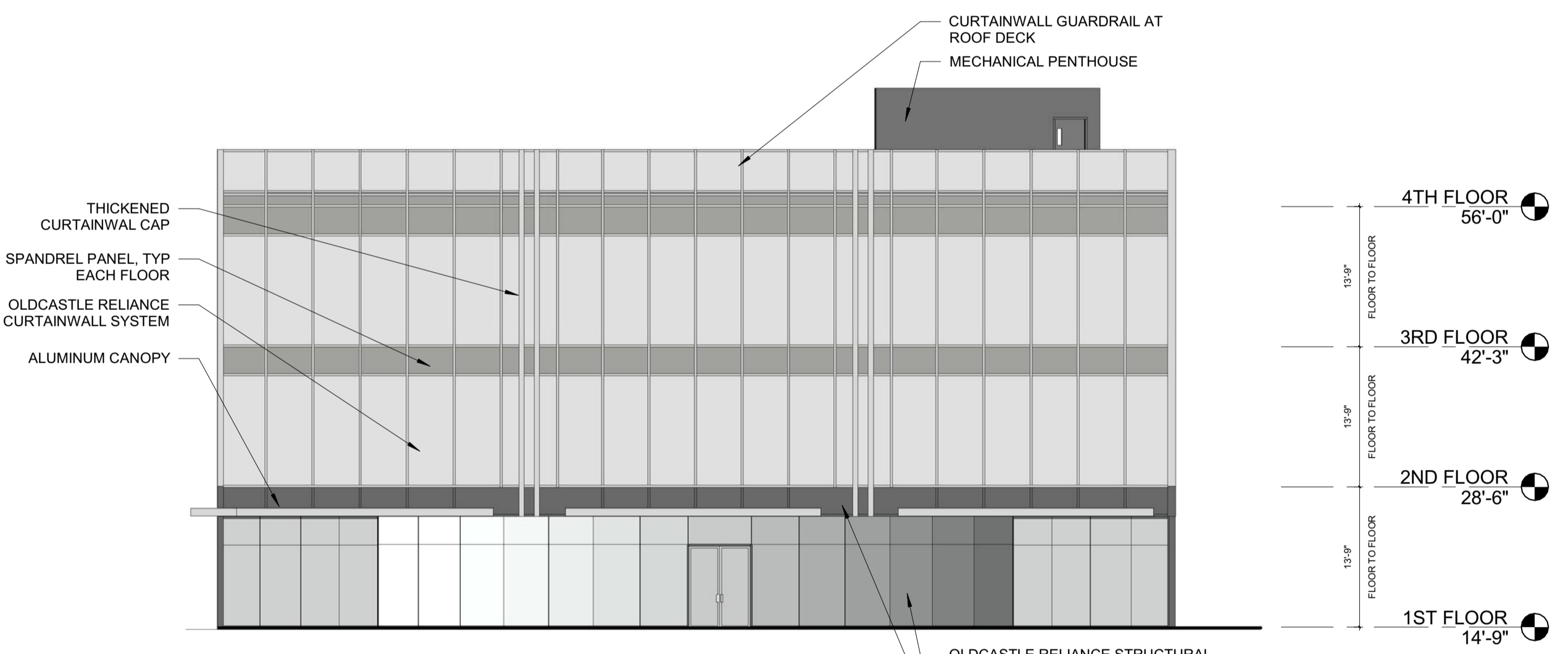


5 | SERVICE ENTRY - LEFT
 3/32" = 1'-0"

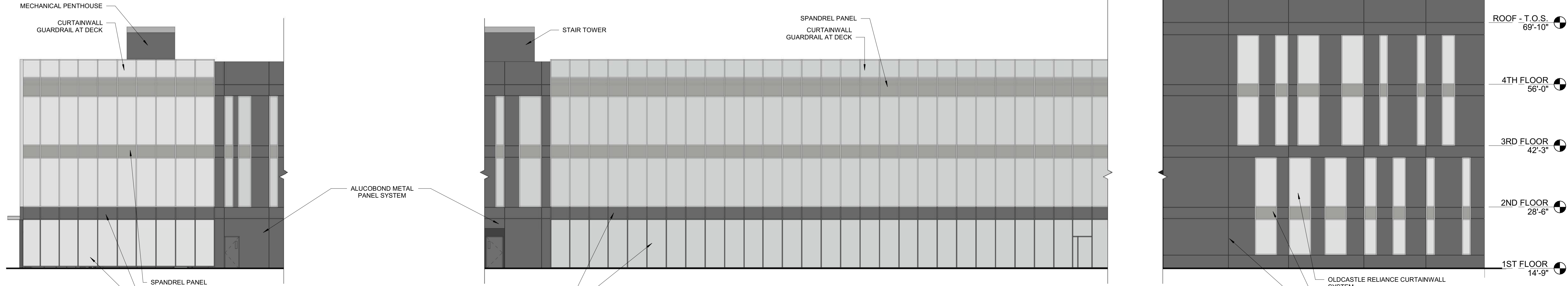
4 | SERVICE ENTRY - RIGHT
 3/32" = 1'-0"



3 | -- Courtyard/Patio Elevation --
 3/32" = 1'-0"



2 | Plaza Elevation
 3/32" = 1'-0"



1 | North Elevation
 3/32" = 1'-0"

Prepared For:
0 Hancock Street LLC

Consultant:
ARCHETYPE architects
 48 Union Wharf Portland, Maine 04101
 (207) 772-6022 ARCHETYPE@ARCHETYPEPA.COM

Project:
0 Hancock Street
 0 Hancock Street
 Portland, Maine

Revisions:

Date: **August 2017**
 Scale: **As indicated**
Building Elevations

A2.02