

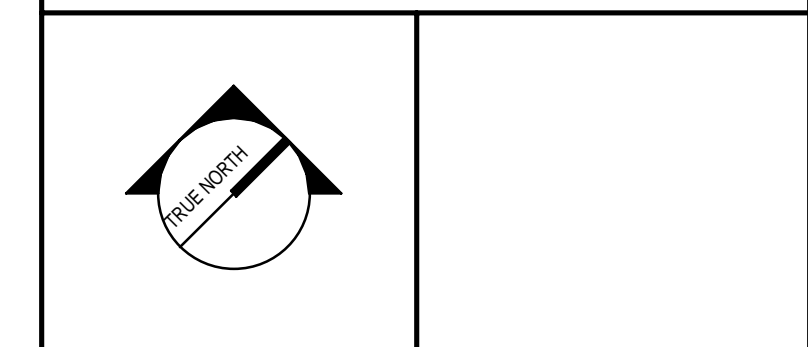
CEILING LEGEND:

	2x2 CEILING TILE AND GRID
	2x6 CEILING TILE AND GRID
	GWB CEILING
	WOOD SLAT CEILING (WD-2)
	WOOD PANEL (WD-3)
	DOWN LIGHT
	2x2 LIGHT FIXTURE
	1x4 LIGHT FIXTURE
	SUPPLY DIFFUSER
	RETURN DIFFUSER
	EXHAUST DIFFUSER
	LINEAR DIFFUSER
	LINEAR PENDANT - DIRECT/INDIRECT
	LINEAR RECESSED
	DECORATIVE PENDANT
	DECORATIVE PENDANT
	DECORATIVE PENDANT

- CEILING NOTES:**
- SEE G101 FOR GENERAL PROJECT NOTES.
 - SEE FINISH SCHEDULE FOR CEILING AND CEILING GRID TYPES.
 - EXCEPT WHERE INDICATED, CENTER CEILING GRIDS IN ROOMS. USE HALF TILES OF GREATER @ PERIMETERS WHEN POSSIBLE.
 - ALIGN CEILING ITEMS AS SHOWN, WITH COMMON CENTERLINES TYPICALLY. CENTER ITEMS IN CEILING, OR IN AREAS UNLESS INDICATED OTHERWISE.
 - WHERE REGULAR OR BEVELED TILE IS USED, PAINT ALL CUT EDGES TO MATCH.
 - CAULK JOINT BETWEEN CEILING (WALL ANGLE) AND WALL WHERE GAPS ARE LARGER THAN 1/8" OR GREATER.
 - PROVIDE ACCESS PANELS AS REQUIRED IN GWB CEILINGS FOR ACCESS AS REQUIRED BY ALL TRADES.
 - FIRE SPRINKLERS SHALL BE CENTERED IN CEILING TILE OR HALF TILE AS SHOWN. FIRE SPRINKLERS SHALL BE LOCATED IN ALIGNMENT WITH OTHER CEILING ITEMS AND SHALL BE PLACED IN COORDINATION WITH LIGHT FIXTURE POSITIONS INDICATED, TYPICAL.
 - FIRE SPRINKLERS ARE SHOWN FOR COORDINATION PURPOSES ONLY. ADDITIONAL SPRINKLER HEADS MAY BE REQUIRED FOR CODE COMPLIANCE, AS DETERMINED BY THE FIRE PROTECTION DESIGNER. SPRINKLERS ARE NOT SHOWN IN ALL AREAS WHERE REQUIRED. FIRE PROTECTION CONTRACTOR SHALL BE RESPONSIBLE FOR PROVIDING A COMPLETE AND FULLY CODE COMPLIANT SYSTEM, INCLUDING HEADS NOT INDICATED IN THIS DRAWING. SIDEWALL MOUNT SPRINKLER HEADS UNDER BALCONIES ARE NOT SHOWN IN THE CEILING PLANS.
 - MECHANICAL AND ELECTRICAL SCOPE SHOWN FOR REFERENCE AND COORDINATION ONLY. REFER TO MECHANICAL DOCUMENTS.
 - WHERE ARCHITECTURAL DRAWINGS DEPICT MECHANICAL OR ELECTRICAL ITEMS OR EQUIPMENT (LIGHTS, DIFFUSERS, ETC.) INSTALLATION OF SUCH ITEMS SHALL BE COORDINATED WITH EACH RESPECTIVE TRADE SUB-CONTRACTOR.
 - WHERE DRAWINGS DO NOT ACCESS INSTALLATION METHODOLOGY, THE CONTRACTOR SHALL BE BOUND TO PERFORM IN STRICT COMPLIANCE WITH THE MANUFACTURER'S SPECIFICATIONS, AND STANDARD INDUSTRY STANDARDS.
 - ALL ACT CEILINGS TO BE OFFSET FROM INSIDE FACE OF EXTERIOR WALLS BY 2'-0" UNLESS OTHERWISE NOTED.
 - CEILING DIMENSIONS ARE TO FINISH FACE OF WALL.
 - PROVIDE 4-INCH METAL PERIMETER TRIM AT ALL EXPOSED EDGES OF ACT EXCEPT AS INDICATED BY CEILING HEIGHT TRANSITION DETAILS A15 ON AE509.
 - ALL EXPOSED STRUCTURE AND SPRINKLER PIPING TO BE PAINTED (PTD-9) TO INCLUDE AREAS VISIBLE ABOVE WOOD SLAT (WD-2) CEILINGS.

REV	DESCRIPTION	DATE
2	SI - 4	05/31/18
1	SI - 1	05/09/18
0	ISSUED FOR CONSTRUCTION	04/16/18

SI - 4
05/31/18

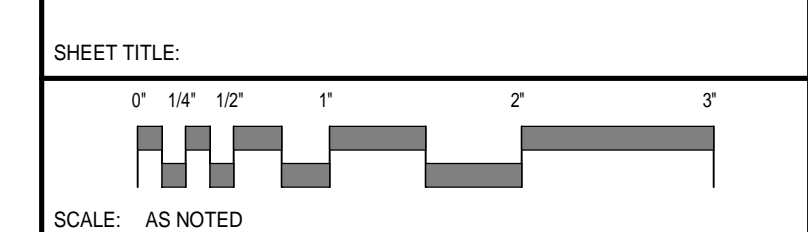


PROJECT NORTH:
SMRT Architects and Engineers
144 Fore Street/P.O. Box 618
Portland, Maine 04104



WEX
CORPORATE HEADQUARTERS

PORTLAND, ME
AREA A - LEVEL FOUR
REFLECTED CEILING PLAN



PROJECT MANAGER:	GWV	PROJECT NO.:	17120-01
AE OF RECORD:	GWV		
JOB CAPTAIN:	CBM		
DRAWN BY:	CBM		
SMRT FILE:	AE127-17120-01	SHEET No.:	AE127

AREA A - LEVEL FOUR REFLECTED CEILING PLAN **B2**
1/8" = 1'-0"