

IF CONSTRUCTION SEQUENCING MEANS A TYPICAL UL RATED U419 WALL IS NOT CONSTRUCTIBLE THE CONTRACTOR MAY UTILIZE A UL RATED SHAFTCHASE WALL ASSEMBLY.

ALL RATED WALLS TO BE BUILT FROM DECK TO DECK. FLOOR TO BE BUILT UP TO ELEVATION OF ADJACENT LANDING AND ROOF PAVERS. WITH KNEE WALL FRAMING @ MAX 6" O.C. FLOOR FRAMING TO BE SIMILAR TO LANDING SHOWN ON A1/AE503 WITH 2X8 FRAMING @ 16" O.C. WITH 3/4" ADVANTECH PLYWOOD. FLOOR FRAMING TO BE INDEPENDENT OF FIRE WALL FRAMING. AREA OF REFUGE PANEL REQUIRED. RE: FIRE ALARM PACKAGE.

PLAN NOTES:

- SEE G101 FOR GENERAL PROJECT NOTES, LEGENDS AND ABBREVIATIONS.
- SEE G102 FOR GENERAL MOUNTING HEIGHTS, TOP OF WALL DETAILS AND PARTITION TYPES.
- CONTRACTOR IS RESPONSIBLE FOR REVIEWING CODE COMPLIANCE PLANS AND NOTIFYING THE ARCHITECT OF CONFLICTS BETWEEN WHAT IS IN THE FIELD AND ON THE CODE DOCUMENTS.
- DIMENSIONS ARE FACE OF CONCRETE, FACE OF MASONRY AND CENTERLINE OF STUD, UNLESS NOTED OTHERWISE.
- WD & HM DOOR JAMBS (HINGE SIDE) SHALL BE 6" FROM CORNER IN STUD PARTITIONS AND 8" FROM CORNER IN MASONRY PARTITIONS UNLESS NOTED OTHERWISE.
- REFER TO DETAILS FOR ADDITIONAL DIMENSIONING INFORMATION.
- REFER TO ENLARGED PLANS FOR PARTITION TYPES AND DIMENSIONS IN AREAS WHICH ARE DETAILED AT A LARGER SCALE.
- FURNITURE AND OWNER PROVIDED EQUIPMENT ARE INDICATED BY DASHED LINE TYPE.
- CONTRACTOR IS RESPONSIBLE FOR THE COORDINATION OF OWNER PROVIDED EQUIPMENT INCLUDING BUT NOT LIMITED TO DIMENSIONAL INFORMATION, AND MECHANICAL, ELECTRICAL AND PLUMBING REQUIREMENTS.
- ALL INTERIOR PARTITIONS TO BE TYPE S3.A UNLESS OTHERWISE INDICATED.
- REFERENCE CEILING PLANS FOR ADDITIONAL INFORMATION REGARDING LOCATION OF PARTITIONS.
- ALL PARTITIONS THAT TOUCH EXTERIOR WALL ARE DESIGNED TO ALIGN W/ CURTAIN WALL MULLION. IF BUILT CONDITION IS DIFFERENT THAN INDICATED ON DOCUMENTS, INFORM ARCHITECT.

PLAN KEYNOTES:

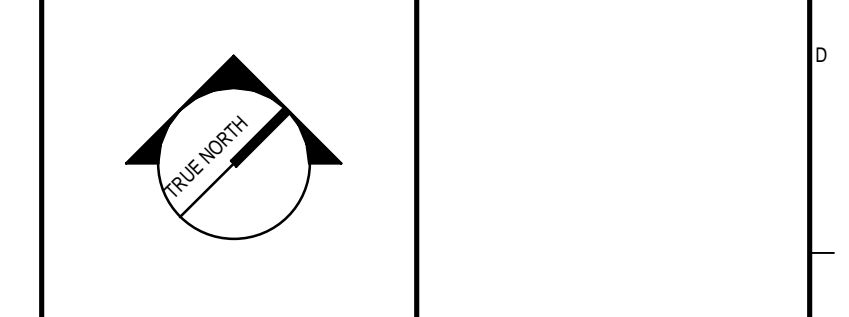
- *STEADYRACK* BIKE RACKS. PROVIDE BLOCKING AS NEEDED. SEE INTERIOR ELEVATIONS.
- ALIGN WALL FACE W/ ADJACENT CORE/SHELL WALL. ALIGN WALL TO BE PARALLEL W/ 'C' LINE.
- CENTER WALL ON COLUMN GRID.
- COLUMN WRAP AS SHOWN SUPERCEDES COLUMN WRAP IN CORE/SHELL PACKAGE. MUST MAINTAIN FIRE RATING.
- PROVIDE F3a TYPE WALL AROUND ALL MECH CHASES
- PROVIDE 3/4" PLYWOOD FULL EXTENT OF WALL BEHIND GWB TO PROVIDE BLOCKING FOR DISPLAY. COORDINATE WITH T/D CONTRACTOR.
- LOCATION OF FISH TANK. EXTENT TBD.
- PROVIDE Furring wall AS SHOWN TIGHT TO EXISTING STRUCTURE. ALIGN ADJACENT WALLS.
- (4) 18" D ADJUSTABLE HEIGHT PLASTIC LAMINATE SHELVES ON WALL MOUNTED BRACKETS AND STANDARDS
- MOP RACK & SHELF
- METAL COLUMN WRAP. FINISHED FLOOR TO UNDERSIDE OF DECK
- MOVEABLE WALL SYSTEM BY NANAWALL. SEE PROJECT MANUAL. CUSTOMRAL FRAME COLOR TO BE SELECTED BY ARCHITECT

PAVER LEGEND:

- WESTILE 24" x 24" PAVERS ON WESTILE POLYPROPYLENE PEDESTALS. 'SCREENJACK' SERIES.
- GENEST 24" X 24" ROOF PAVER. STANDARD COLOR ON BISON PEDESTAL SYSTEM.
 - 2-PART EPOXY COATING. FORMULATED FOR EXTERIOR CONCRETE APPLICATION. CONTRACTOR TO COORDINATE EXACT COLOR & EXTENT WITH ARCHITECT AND OWNER. COLOR: WEX RED.

REV	DESCRIPTION	DATE
2	SI - 4	05/31/18
1	SI - 1	05/09/18
0	ISSUED FOR CONSTRUCTION	04/16/18

SI - 4
05/31/18

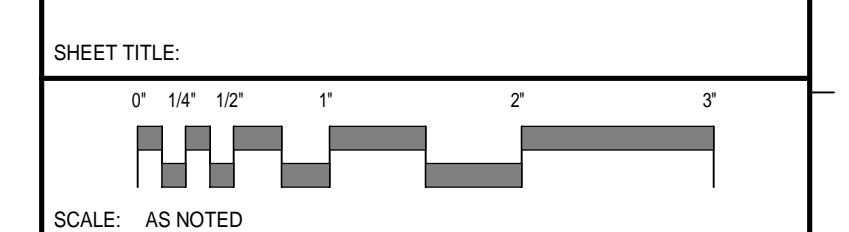


PROJECT NORTH:
SMRT Architects and Engineers
144 Fore Street/P.O. Box 618
Portland, Maine 04104



WEX
CORPORATE HEADQUARTERS

PORTLAND, ME
AREA A - LEVEL FOUR FLOOR PLAN



PROJECT MANAGER:	GWV	PROJECT NO.:	17120-01
AE OF RECORD:	GWV		
JOB CAPTAIN:	CBM		
DRAWN BY:	CBM		
SMRT FILE:	AE107-17120-01	SHEET No.:	AE107

AREA A - LEVEL FOUR FLOOR PLAN B2
1/8" = 1'-0"