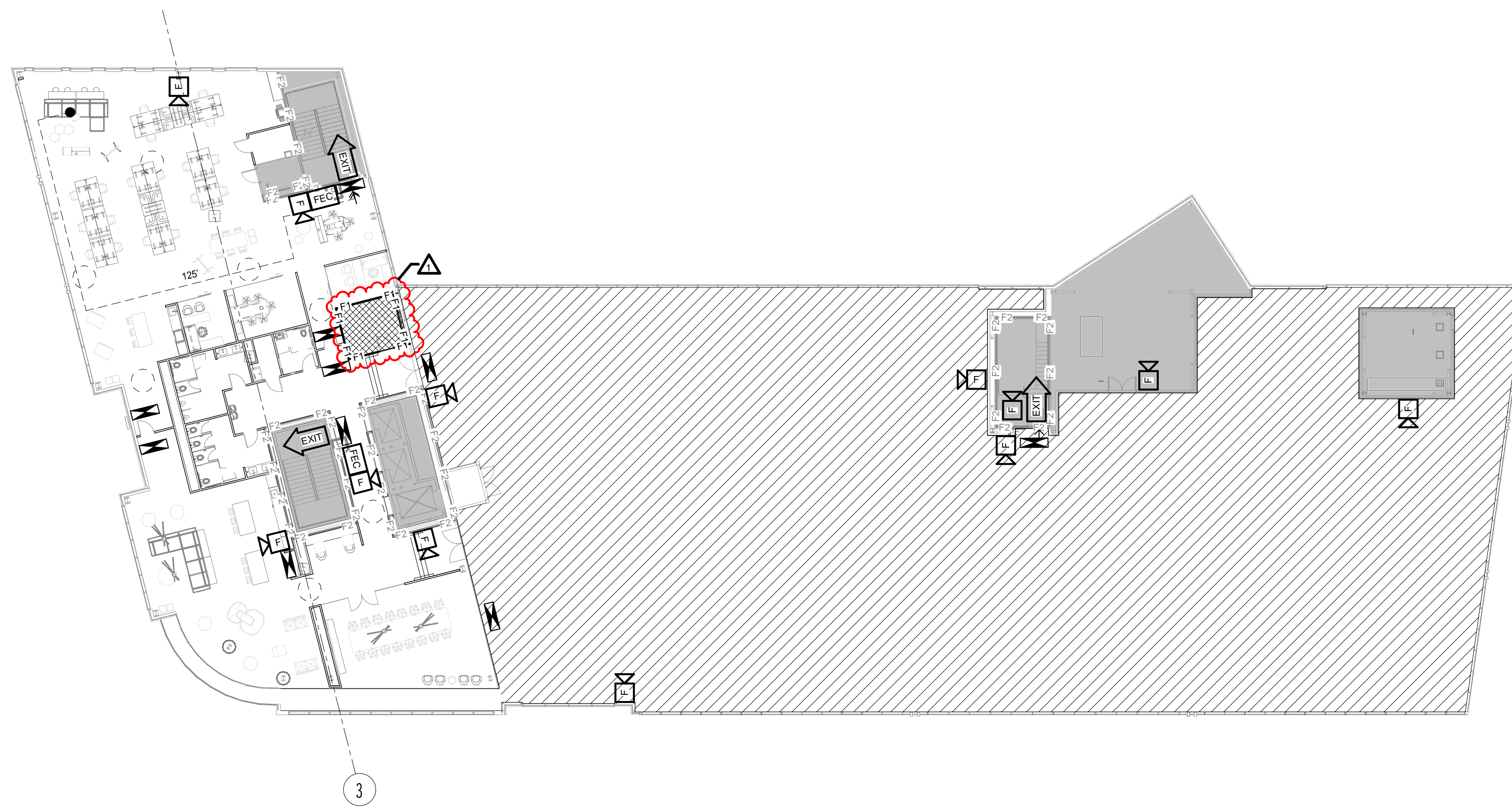


4TH FLOOR PLAN - CORE & SHELL PLAN (H3)  
1/16" = 1'-0"



4TH FLOOR PLAN - LIFE SAFETY - PROPOSED (B3)  
1/16" = 1'-0"

**LIFE SAFETY LEGEND**

- H2 — 2 HOUR RATED HORIZONTAL EXIT & SMOKE BARRIER
- O2 — 2 HOUR RATED OCCUPANCY SEPARATION & SMOKE BARRIER
- F2 — 2 HOUR RATED FIRE BARRIER
- F1 — 1 HOUR RATED FIRE BARRIER
- S2 — 2 HOUR RATED SMOKE BARRIER
- S1 — 1 HOUR RATED SMOKE BARRIER
- S0 — SMOKE PARTITION
- EXIT DISCHARGE
- SMOKE CONTAINMENT BARRIER
- \* STANDPIPE OR HOSE VALVE CABINET
- Y FIRE DEPT. CONNECTION
- 172 TRAVEL DISTANCE
- [FEC] FIRE EXTINGUISHER CABINET
- FE FIRE EXTINGUISHER WALL HUNG
- EXIT EGRESS DOOR
- [F] FIRE ALARM VISIBLE ONLY NOTIFICATION INDICATOR
- [FA] FIRE ALARM AUDIBLE/VISIBLE NOTIFICATION INDICATOR
- EXIT SIGN
- NOT IN SCOPE
- 5'-0" CLEARANCE
- ASSEMBLY OCCUPANCY
- DESIGNATED AREA OF REFUGE. AREA OF REFUGE PANEL REQUIRED, RE: FIRE ALARM PACKAGE.

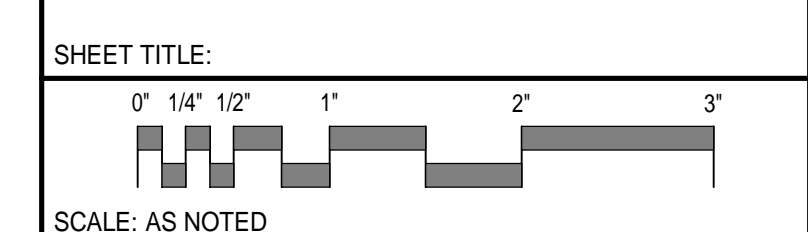
REV	DESCRIPTION	DATE
1	SI - 4	05/31/18
0	ISSUED FOR CONSTRUCTION	04/16/18

SI - 4  
05/31/18  
CURRENT ISSUE STATUS:

SMRT Architects and Engineers  
144 Fore Street/P.O. Box 618  
Portland, Maine 04104

ARCHITECTURE | ENGINEERING | PLANNING | INTERIORS | ENERGY **SMRT**

**WEX**  
CORPORATE HEADQUARTERS  
PORTLAND, ME  
**LEVEL FOUR LIFE SAFETY PLAN**



PROJECT MANAGER: GWV	PROJECT NO: 17120-01
A/E OF RECORD: Checker	
JOB CAPTAIN: CBM	
DRAWN BY: Author	
SMRT FILE: A-004-17120-01	SHEET No. <b>A-004</b>