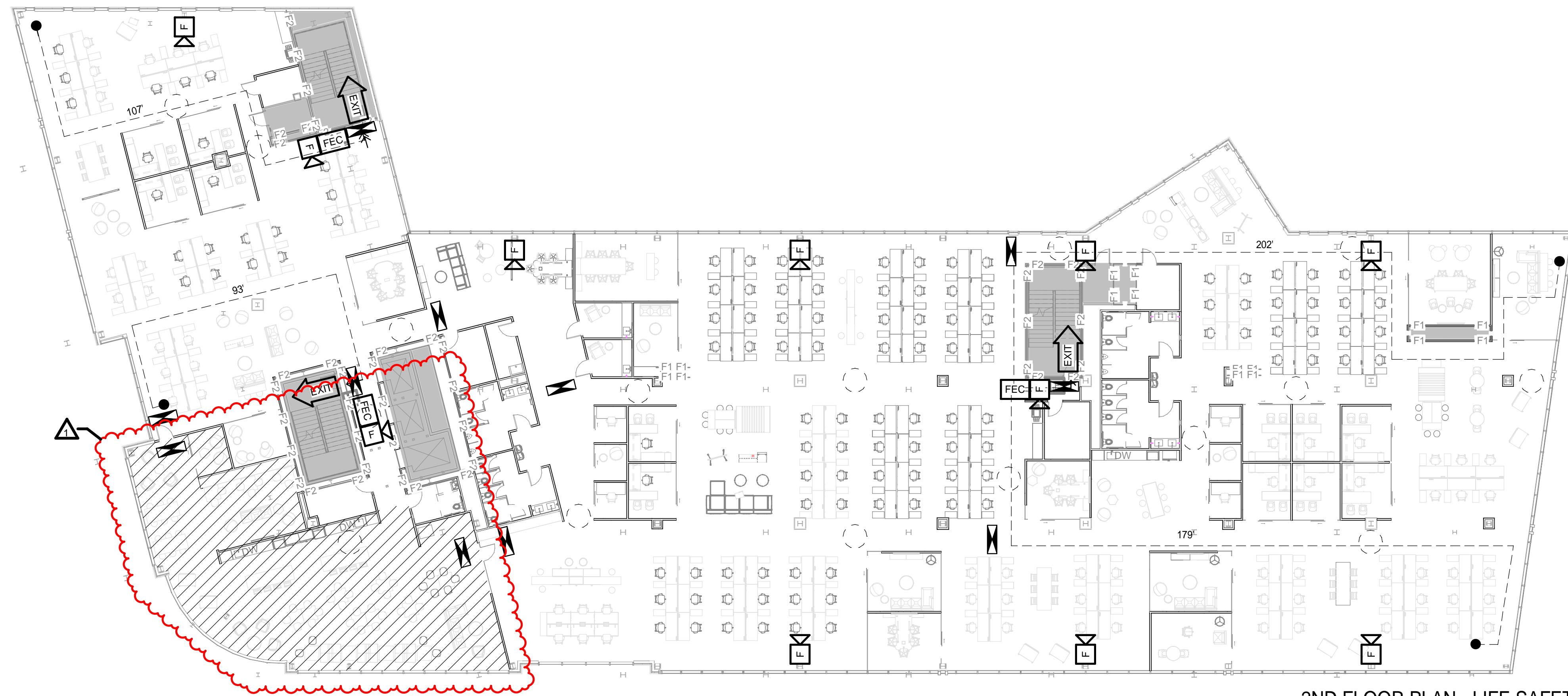
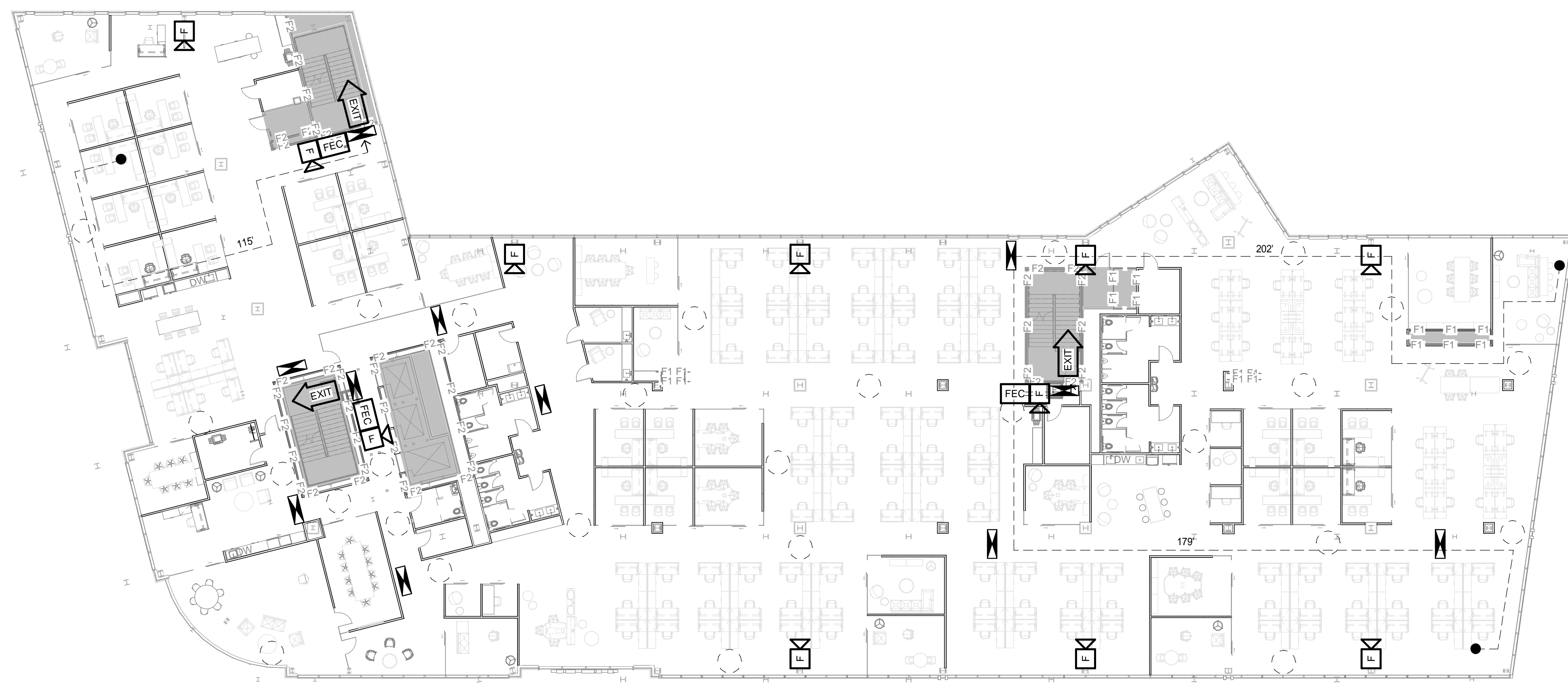


NOT IN SCOPE:
BUILDING CORE AND SHELL APPLICATION FILED BY
ARCHETYPE ARCHITECTS ON 10 / 24 / 2017.
PERMIT NO. 201701676

2ND FLOOR PLAN - CORE & SHELL PLAN (K3)
1/16" = 1'-0"



2ND FLOOR PLAN - LIFE SAFETY - PROPOSED (E3)
1/16" = 1'-0"



3RD FLOOR PLAN - LIFE SAFETY - PROPOSED (A3)
1/16" = 1'-0"

LIFE SAFETY LEGEND

- H2 — 2 HOUR RATED HORIZONTAL EXIT & SMOKE BARRIER
- O2 — 2 HOUR RATED OCCUPANCY SEPARATION & SMOKE BARRIER
- F2 — 2 HOUR RATED FIRE BARRIER
- F1 — 1 HOUR RATED FIRE BARRIER
- S2 — 2 HOUR RATED SMOKE BARRIER
- S1 — 1 HOUR RATED SMOKE BARRIER
- S0 — SMOKE PARTITION
- EXIT DISCHARGE
- ⊙ SMOKE CONTAINMENT BARRIER
- ⊙* STANDPIPE OR HOSE VALVE CABINET
- ⊙ FIRE DEPT. CONNECTION
- 172 — TRAVEL DISTANCE
- ⊠ FEC FIRE EXTINGUISHER CABINET
- ⊠ FE FIRE EXTINGUISHER WALL HUNG
- ➡ EXIT EGRESS DOOR
- ⊠ FIRE ALARM VISIBLE ONLY NOTIFICATION INDICATOR
- ⊠ FK FIRE ALARM AUDIBLE/VISIBLE NOTIFICATION INDICATOR
- ⊠ EXIT SIGN
- NOT IN SCOPE
- 5'-0" CLEARANCE
- ▨ ASSEMBLY OCCUPANCY

REV	DESCRIPTION	DATE
1	PERMITTING ADDENDUM NO. 2	03-28-18

PERMITTING ADDENDUM NO. 2
03-27-2018

CURRENT ISSUE STATUS:

PROJECT NORTH:

SMRT Architects and Engineers
144 Fore Street/P.O. Box 618
Portland, Maine 04104

ARCHITECTURE | ENGINEERING | PLANNING | INTERIORS | ENERGY **SMRT**

WEX
CORPORATE HEADQUARTERS

PORTLAND, ME
LEVEL TWO AND THREE LIFE SAFETY PLAN

SHEET TITLE:

SCALE: AS NOTED

PROJECT MANAGER: GWV PROJECT NO: 17120-01
A/E OF RECORD: GWV
JOB CAPTAIN: CBM
DRAWN BY: CBM
SMRT FILE: A-003-17120-01 SHEET NO. **A-003**

NOT FOR CONSTRUCTION