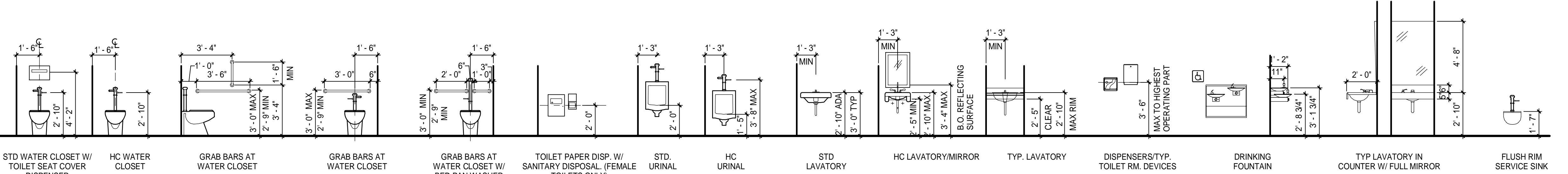
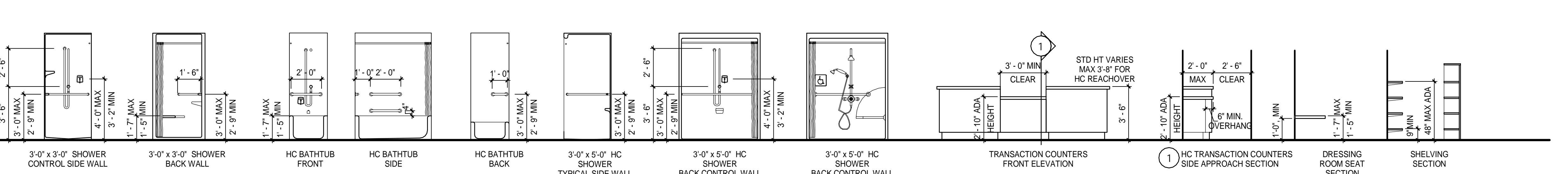


STANDARD MOUNTING HEIGHTS FOR MISCELLANEOUS WALL-MOUNTED ACCESSORIES

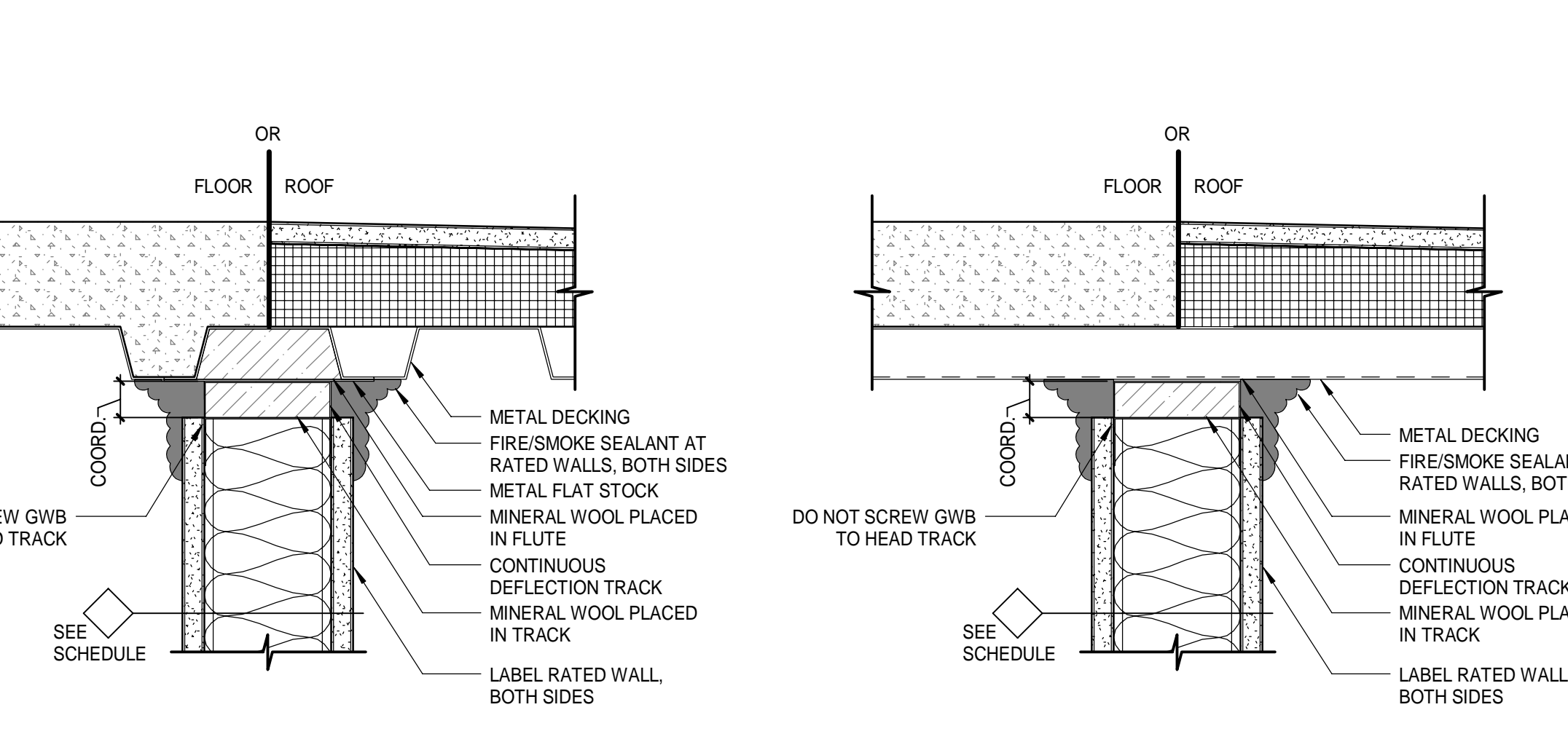
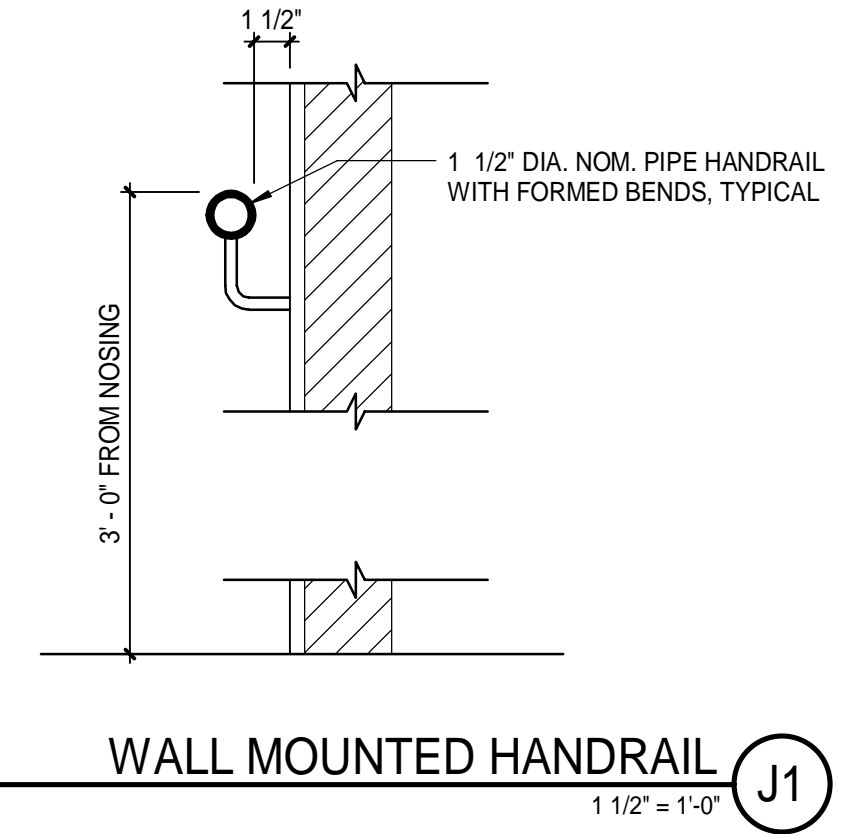


STANDARD PLUMBING FIXTURES AND WALL-MOUNTED ACCESSORY MOUNTING HEIGHTS

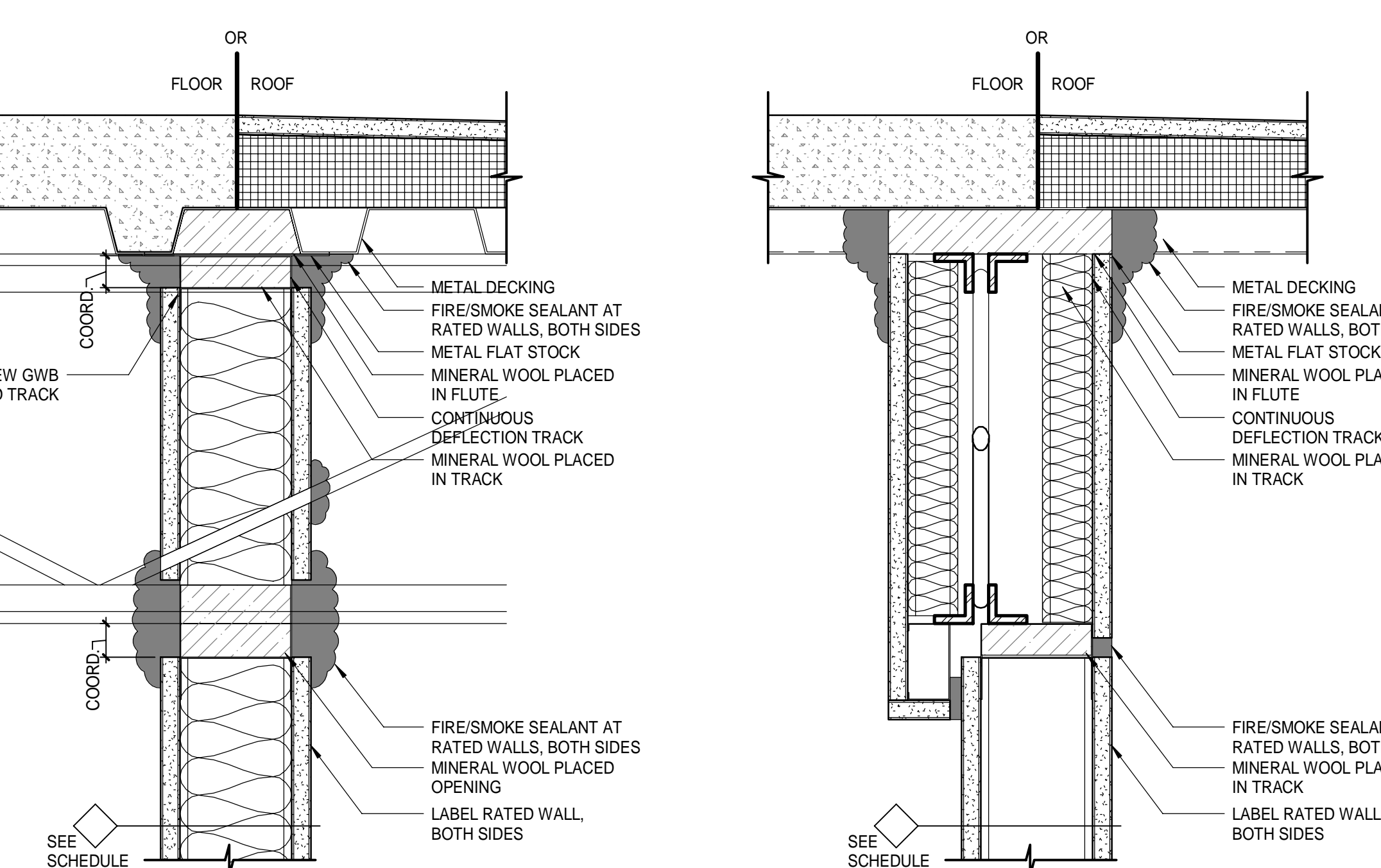


STANDARD MOUNTING HEIGHTS FOR BATHTUB AND SHOWER FIXTURES

STANDARD HEIGHTS FOR TRANSACTION COUNTER/ SHELVING/ SEATING

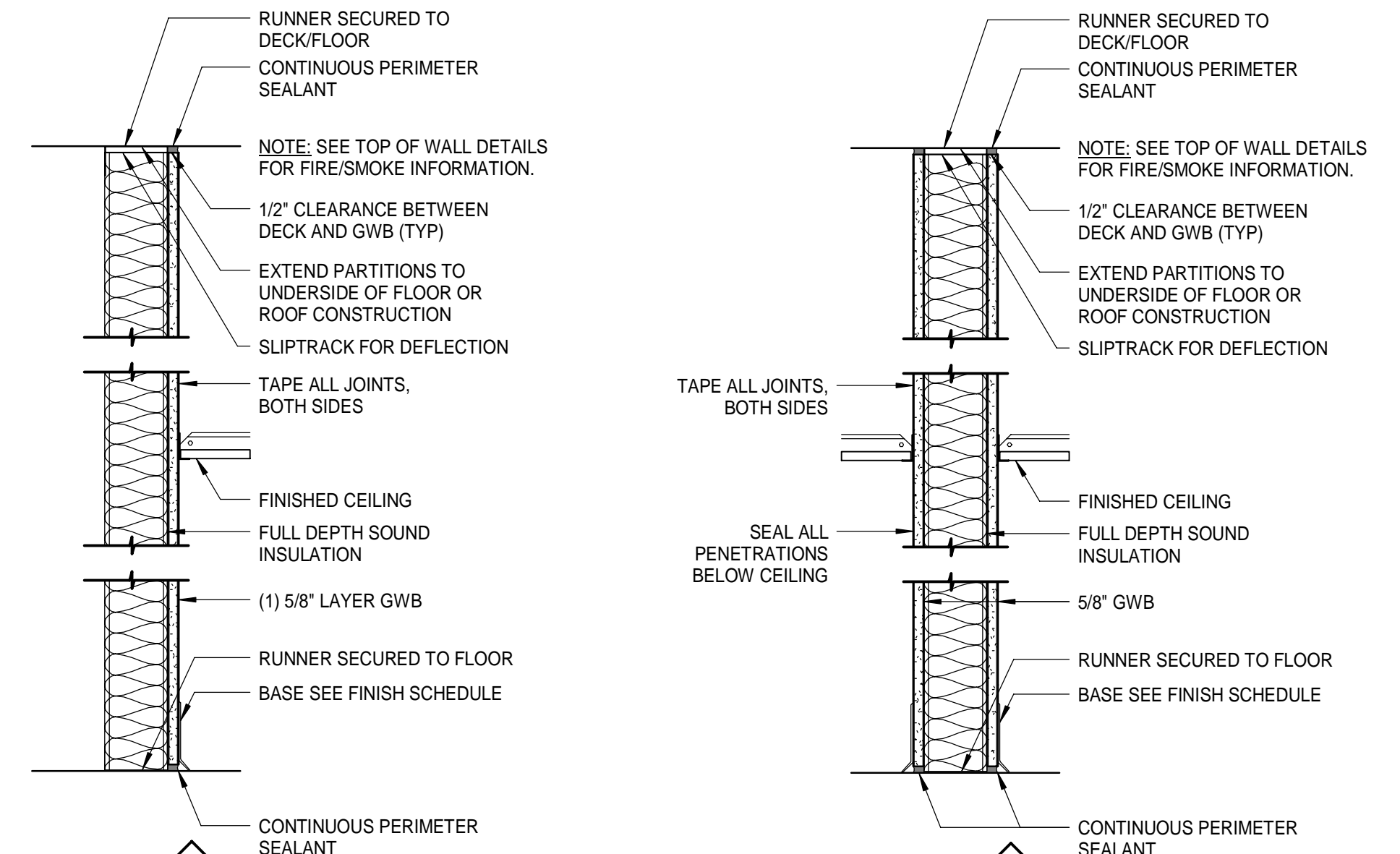


NOTES:  
 1. REFER TO FLOOR PLAN FOR RATED WALLS.  
 2. ACOUSTICAL SEALANT MAY BE USED IN PLACE OF FIRE/SMOKE SEALANT IF WALL IS NOT RATED.  
 3. COMPLY WITH REQUIREMENTS OF UL SYSTEM HW-D-0224 (OR EQUAL) WHERE WALL IS INDICATED TO BE FIRE OR SMOKE RATED.  
 4. TAPE AND CAULK ALL PENETRATIONS.



NOTES:  
 1. REFER TO FLOOR PLAN FOR RATED WALLS.  
 2. ACOUSTICAL SEALANT MAY BE USED IN PLACE OF FIRE/SMOKE SEALANT IF WALL IS NOT RATED.  
 3. COMPLY WITH REQUIREMENTS OF UL SYSTEM HW-D-0218 (OR EQUAL) WHERE WALL IS INDICATED TO BE FIRE OR SMOKE RATED.  
 4. TAPE AND CAULK ALL PENETRATIONS.

TOP OF WALL DETAILS A11  
3' = 1'-0"



TYPE F1 NON-RATED

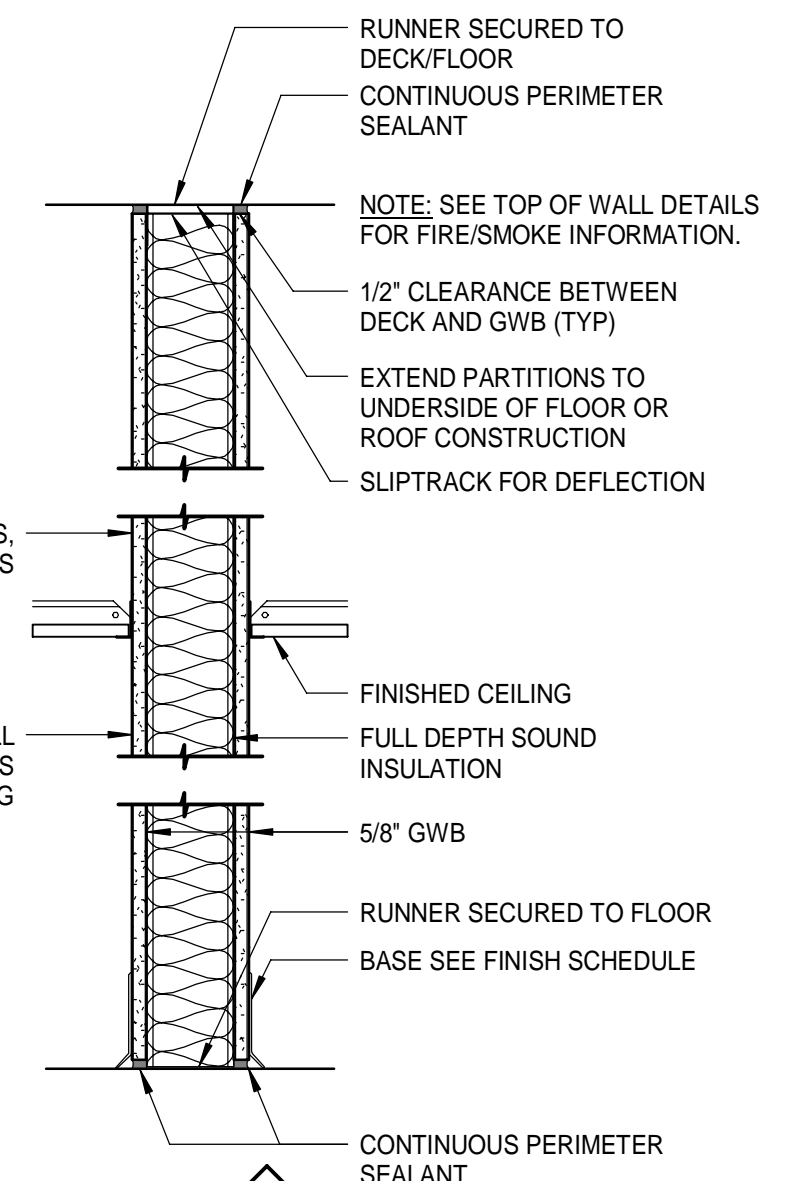
ONE LAYER 5/8" GWB TAGGED SIDE OF 7/8" HAT CHANNELS.

TYPE F2 NON-RATED

ONE LAYER 5/8" GWB TAGGED SIDE OF 1 5/8" METAL STUDS.

TYPE F3 NON-RATED

ONE LAYER 5/8" GWB TAGGED SIDE OF 3 5/8" METAL STUDS.



TYPE S2 NON-RATED

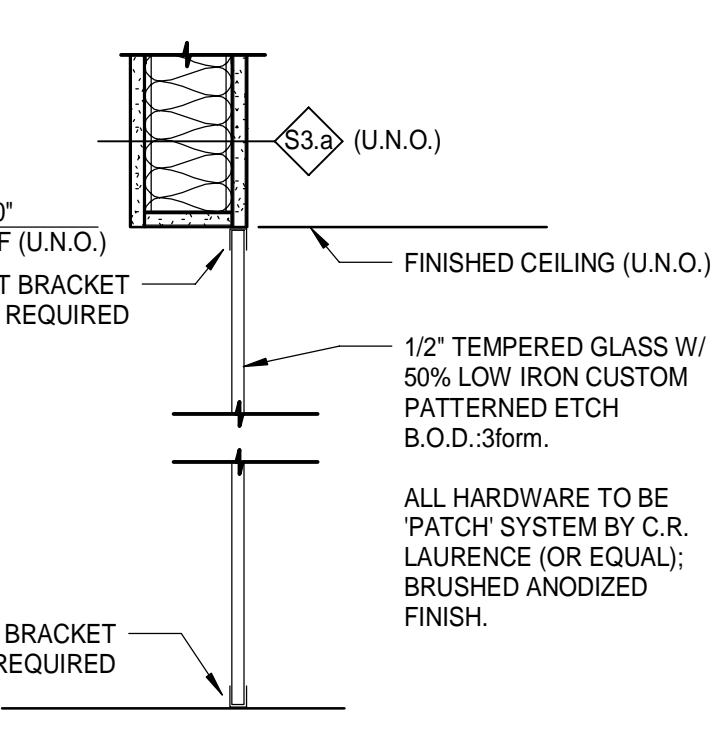
(STC 45) ONE LAYER 5/8" GWB EACH SIDE OF 2 1/2" METAL STUDS.

TYPE S3 NON-RATED

(STC 45) ONE LAYER 5/8" GWB EACH SIDE OF 3 5/8" METAL STUDS.

TYPE S6 NON-RATED

(STC 45) ONE LAYER 5/8" GWB EACH SIDE OF 6" METAL STUDS.



TYPE G1 FRAMELESS GLASS

**WALL TYPE NOTES:**  
 1. ALL INTERIOR PARTITIONS TO BE TYPE S3.a UNLESS OTHERWISE INDICATED.

| REV | DESCRIPTION | DATE |
|-----|-------------|------|
|     |             |      |
|     |             |      |
|     |             |      |
|     |             |      |
|     |             |      |
|     |             |      |
|     |             |      |
|     |             |      |
|     |             |      |
|     |             |      |
|     |             |      |
|     |             |      |
|     |             |      |
|     |             |      |

**ISSUED FOR PERMITTING**  
02-05-2017

CURRENT ISSUE STATUS:

SMRT Architects and Engineers  
144 Fore Street/P.O. Box 618  
Portland, Maine 04104

ARCHITECTURE | ENGINEERING | PLANNING | INTERIORS | ENERGY **SMRT**

**WEX**  
CORPORATE HEADQUARTERS

PORTLAND, ME

**GENERAL MOUNTING HEIGHTS,  
WALL TYPES & TOP OF WALL  
DETAILS**

SHEET TITLE:

SCALE: AS NOTED

PROJECT MANAGER: GWV PROJECT NO: 17120-01

A/E OF RECORD: GWV

JOB CAPTAIN: CBI

DRAWN BY: CBI

**G1002**

SMRT FILE: G1002-17120-01 SHEET No. 02

NOT FOR CONSTRUCTION

WALL TYPES A1  
1 1/2" = 1'-0"