



WEX CORPORATE HEADQUARTERS

ONE HANCOCK STREET, PORTLAND, ME, 04101

FEBRUARY 5TH, 2018

ISSUED FOR PERMITTING

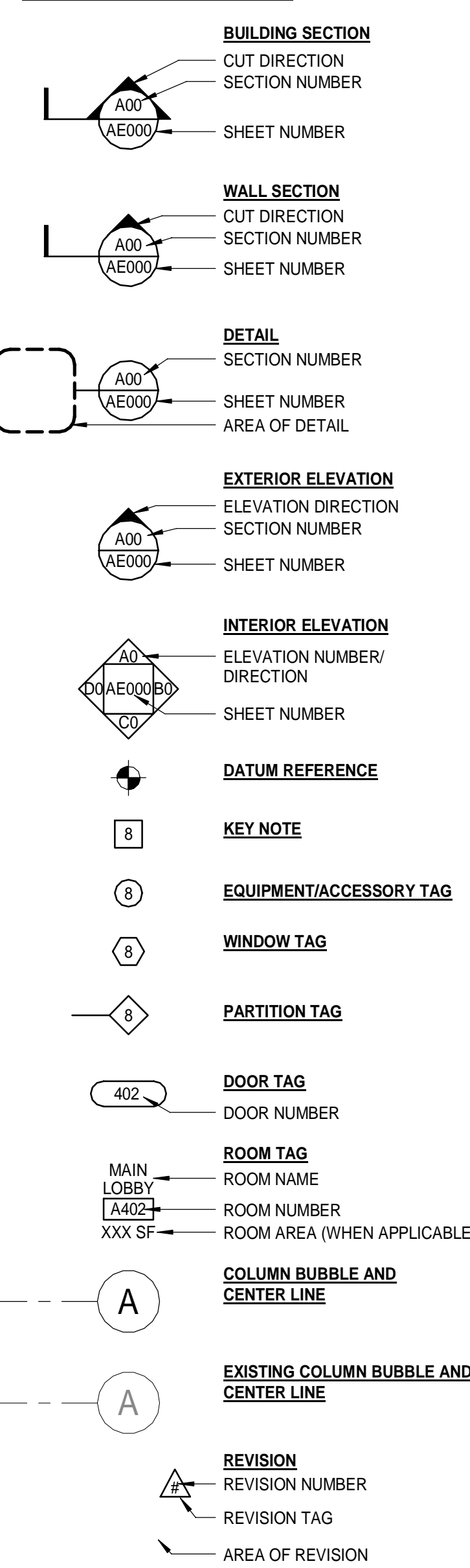
GENERAL NOTES:

- FIELD VERIFY ALL DIMENSIONS AND LAYOUT PRIOR TO PROCEEDING WITH WORK. NOTIFY ARCHITECT IN WRITING OF ANY DISCREPANCIES OR INCONSISTENCIES. FAILURE TO REPORT ANY DISCREPANCIES WITHIN THESE CONSTRUCTION DOCUMENTS TO THE ARCHITECT WILL NOT BE GROUNDS FOR ADDITIONAL COST OR CHANGE ORDERS.
- CONTRACTOR SHALL BE RESPONSIBLE FOR PROVIDING ALL MATERIALS (UNLESS NOTED OTHERWISE), AND WORKMANSHIP IN ACCORDANCE WITH FEDERAL, STATE, CITY, AND LOCAL BUILDING CODES AND THEIR REQUIREMENTS.
- CONTRACTOR AND ALL TRADES SHALL NOTE REQUIREMENTS OF "GENERAL NOTES" ON ALL SHEETS.
- EACH TRADE TO PROVIDE SMOKE OR FIRE SEALANT AT PENETRATIONS AS REQUIRED FOR WALL TYPE (UNLESS NOTED OTHERWISE). ALL SEALANT, FIRE STOPPING AND SMOKE STOPPING ASSEMBLIES SHALL BE UL RATED.
- REFER TO ALL CONSTRUCTION DOCUMENTS FOR REQUIREMENTS WHICH MAY AFFECT THE WORK IN ANOTHER AREA AND/OR DISCIPLINE AND COORDINATE.
- PROVIDE BLOCKING IN WALLS AS NECESSARY WHERE CASEWORK, FURNITURE, SHELVES, HANDRAILS, AND/OR OTHER MISC. EQUIPMENT IS LOCATED.
- REFER TO G1002 SHEETS FOR GENERAL MOUNTING HEIGHTS.
- DO NOT SCALE CONSTRUCTION DOCUMENTS.
- PROVIDE MEANS "FURNISH AND INSTALL".

ABBREVIATIONS:

AB ANCHOR BOLT	L ANGLE / LENGTH
A/C AIR CONDITIONING	LF LEFT
ACCU AIR CONDITIONING CONDENSER UNIT	LNO SHEET LINOLEUM
ACPLAS ACOUSTICAL PLASTER	LL LIVE LOAD
ACT ACOUSTIC CEILING TILE	LLH LONG LEG HORIZONTAL
AFF ABOVE FINISH FLOOR	LLV LONG LEG VERTICAL
AGG AGGREGATE	LP LIGHTING PANEL / LIQUIFIED PROPANE
ALT ALTERNATE	
AP ACCESS PANEL	MAX MAXIMUM
APPROX APPROXIMATE	MB MARKER BOARD
ARCH ARCHITECTURAL	MDO MEDIUM DENSITY OVERLAY
BCX BOTTOM CORD EXTENSION	MECH MECHANICAL
BD BOARD	MFR MANUFACTURER
BIT BITUMINOUS	MIN MINIMUM
BLDG BUILDING	MISC MISCELLANEOUS
BLP BORROWED LIGHT PANEL	MO MASONRY OPENING
BO BOTTOM OF	MR MOISTURE-RESISTANT
BOF BOTTOM OF FOOTING	MUA MAKE-UP AIR
BOS BOTTOM OF STEEL	
BOT BOTTOM	N NOSING
BRDG BRIDGING	NCB NEW CATCH BASIN
BRG BEARING	NDMH NEW DRAIN MANHOLE
BS BOTH SIDES	NFM NEW FORCE MAIN
BSE BRICK SHELF ELEVATION	NIC NOT IN CONTRACT
	NS NEAR SIDE
C CHANNEL	NSD NEW STORM DRAIN LINE
CB CATCH BASIN / CHALKBOARD	NSS NEW SANITARY SEWER LINE
CEM BD CEMENTITIOUS BACKER BOARD	NW NEW WATER LINE
CFM CUBIC FEET PER MINUTE	
CIP CAST IN PLACE	OC ON CENTER
CONC CONTROL JOINT / CONSTRUCTION JOINT	OF OUTSIDE FACE
CL CENTER LINE	OH OVERHEAD
CLL CONTRACT LIMIT LINE	
CLR CLEAR	PA PUBLIC ADDRESS
CMU CONCRETE MASONRY UNIT	PAF POWER-ACTUATED FASTENER
COL COLUMN	PDU POOL DEHUMIDIFICATION UNIT
CONC CONCRETE	PL PLATE / PROPERTY LINE
CONT CONTINUOUS	PLAM PLASTIC LAMINATE
CT CERAMIC TILE	PLF POUNDS PER LINEAR FOOT
CUH CABINET UNIT HEATER	PP POWER PANEL
	PSF POUNDS PER SQUARE FOOT
D DIAMETER	PSI POUNDS PER SQUARE INCH
DBL DOUBLE	PT PRESSURE-TREATED
DF DRINKING FOUNTAIN	PVC POLYVINYL CHLORIDE
DL DEAD LOAD	PVMT PAVEMENT
DR DISPLAY RAIL	
DTL DETAIL	R RISER / RADIUS
DW DISHWASHER	RB RESILIENT BASE
DWG DRAWING	RD ROOF DRAIN
	REIN REINFORCED
EA EACH	REQD REQUIRED
EF EXHAUST FAN / EACH FACE	RT RIGHT
EJ EXPANSION JOINT	RO ROUGH OPENING
EL ELEVATION	ROW RIGHT OF WAY
ELEC ELECTRICAL	RR RUB-RAIL
EOP EDGE OF PAVEMENT	RTU ROOF TOP UNIT (HVAC)
EPM ETHYLENE PROPYLENE DIENE MONOMER	
EQ EQUAL	SACT SUSPENDED ACOUSTIC TILE CEILING
EW EACH WAY	SC SOLID CORE
EWC ELECTRIC WATER COOLER	SF SQUARE FOOT / SUPPLY FAN
EXIST EXISTING	SFRM SPRAYED FIRE-RESISTIVE MATERIAL
EXP EXPANSION	SHT SHEET
EXT EXTERIOR	SIM SIMILAR
	SK SHEAR KEY
FB FLAT BAR	SN SANITARY NAPKIN (DISPENSER)
FBO FURNISHED BY OTHERS	SP SPECIAL
FCO FLOOR CLEA-OUT	SS STAINLESS STEEL
FD FLOOR DRAIN	STA STATION
FE FIRE EXTINGUISHER	STL STEEL
FEC FIRE EXTINGUISHER CABINET	STRUC STRUCTURAL
FF FINISH FLOOR / FAR FACE	
FFE FINISH FLOOR ELEVATION	T TREAD
FO FRAMED OPENING	TACKBOARD
FRP FIBER REINFORCED PLASTIC	T&B TOP AND BOTTOM
FS FAR SIDE	TBM TEMPORARY BENCHMARK
FTG FOOTING	TCE TOP CHORD EXTENSION
	TJ TIE JOIST
GA GAUGE	TO TOP OF
GALV GALVANIZED	TOC TOP OF CONCRETE
GB GRAB BAR	TOF TOP OF FOOTING
GC GENERAL CONTRACTOR	TOM TOP OF MASONRY
GDT GYPSUM DROP-IN TILE	TOP TOP OF PIER
GV GRAVITY VENT	TOS TOP OF STEEL
GWB GYPSUM WALL BOARD	TOW TOP OF WALL
	TP TOILET PAPER (DISPENSER) / TEST PIT
H HORIZONTAL	TS TUBE STEEL
HC HANDICAPPED / HOLLOW CORE	TYP TYPICAL
HORIZ HORIZONTAL	
HM HOLLOW METAL	UH UNIT HEATER
HRU HEAT RECOVERY UNIT	UNO UNLESS NOTED OTHERWISE
H&V HEATING AND VENTILATING	
HVAC HEATING, VENTILATING AND AIR CONDITIONING	V VENT PIPE / VERTICAL
	VB VAPOR BARRIER
I INCLUDED ANGLE	VCT VINYL COMPOSITION TILE
ID INSIDE DIAMETER	VERT VERTICAL
IF INSIDE FACE	VP VISION PANEL
IJ ISOLATION JOINT	VTR VENT THROUGH THE ROOF
IMP IMPACT RESISTANT	
INS INSULATED	W WITH
INV INVERT	WC WATER CLOSET
JS JOINT SUBSTITUTE	WD WOOD
	WF WIDE FLANGE
K KIPS	WH WATER HEATER
	W/O WITH OUT
	WP WORKING POINT
	WS WEB STIFFENER
	WWF WELDED WIRE FABRIC

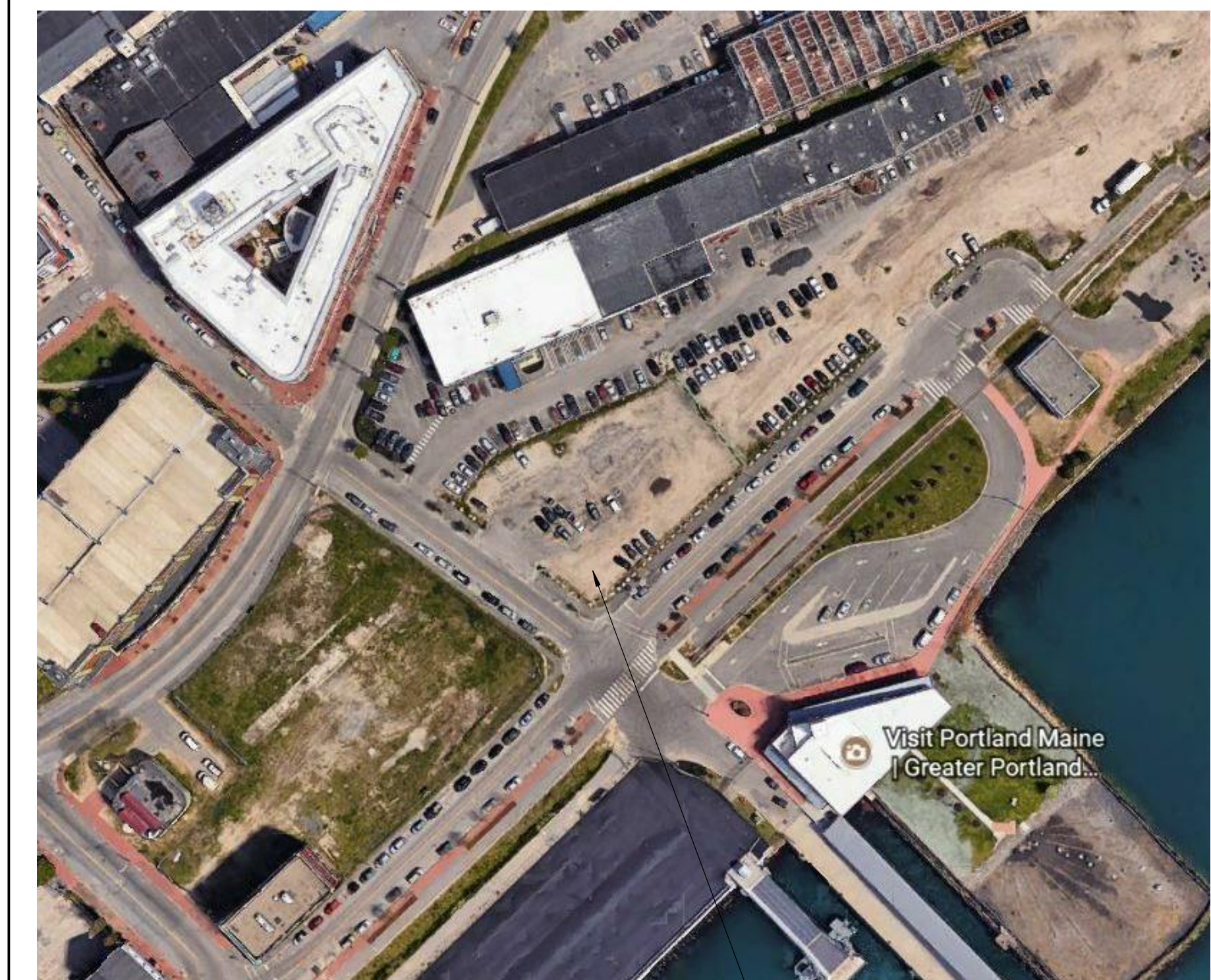
SYMBOL LEGEND:



DRAWING LIST:

- GENERAL**
- G1001 COVER SHEET, LEGEND AND ABBREVIATIONS
 - G1002 GENERAL MOUNTING HEIGHTS, WALL TYPES, TOP OF WALL DETAILS
- ARCHITECTURAL**
- A-001 CODE SUMMARY AND KEY PLAN
 - A-002 LEVEL ONE LIFE SAFETY PLAN
 - A-003 LEVEL TWO AND THREE LIFE SAFETY PLANS
 - A-004 LEVEL FOUR LIFE SAFETY PLAN
 - AE101 AREA A - LEVEL ONE FLOOR PLAN
 - AE102 AREA B - LEVEL ONE FLOOR PLAN
 - AE103 AREA A - LEVEL TWO FLOOR PLAN
 - AE104 AREA B - LEVEL TWO FLOOR PLAN
 - AE105 AREA A - LEVEL THREE FLOOR PLAN
 - AE106 AREA B - LEVEL THREE FLOOR PLAN
 - AE107 AREA A - LEVEL FOUR FLOOR PLAN
 - AE108 AREA B - LEVEL FOUR FLOOR PLAN
 - AE121 AREA A - LEVEL ONE REFLECTED CEILING PLAN
 - AE122 AREA B - LEVEL ONE REFLECTED CEILING PLAN
 - AE123 AREA A - LEVEL TWO REFLECTED CEILING PLAN
 - AE124 AREA B - LEVEL TWO REFLECTED CEILING PLAN
 - AE125 AREA A - LEVEL THREE REFLECTED CEILING PLAN
 - AE126 AREA B - LEVEL THREE REFLECTED CEILING PLAN
 - AE127 AREA A - LEVEL FOUR REFLECTED CEILING PLAN
 - AE404 ENLARGED PLANS
 - AE405 ENLARGED SHOWER PLAN
 - AE601 LEVEL ONE & LEVEL TWO ROOM FINISH SCHEDULE
 - AE602 LEVEL THREE & LEVEL FOUR ROOM FINISH SCHEDULE
 - AE611 DOOR SCHEDULE

LOCATION MAP:



REV	DESCRIPTION	DATE

ISSUED FOR PERMITTING
02-05-2017

CURRENT ISSUE STATUS:

SMRT Architects and Engineers
144 Fore Street/P.O. Box 618
Portland, Maine 04104

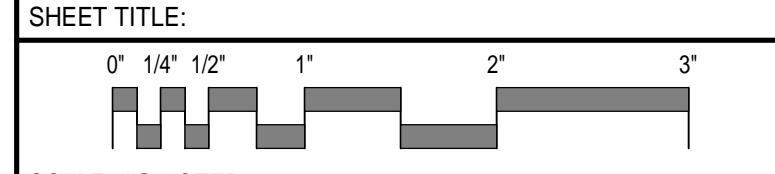
ARCHITECTURE | ENGINEERING | PLANNING | INTERIORS | ENERGY | SMRT

WEX CORPORATE HEADQUARTERS

PORTLAND, ME

COVER SHEET, LEGEND AND ABBREVIATIONS

SHEET TITLE:



SCALE: AS NOTED

PROJECT MANAGER: GWV PROJECT NO: 17120-01

A/E OF RECORD: GWV

JOB CAPTAIN: CBM

DRAWN BY: CBM

G1001

THIS PERMIT IS FOR INTERIOR FIT-UPS ONLY.
CORE AND SHELL APPLICATION HAS BEEN FILED
BY ARCHETYPE ON 10 / 24 / 2017.
PERMIT NO. 201701676

ALL ELECTRICAL, PLUMBING, AND HVAC WILL BE
FILED UNDER A SEPARATE PERMIT APPLICATION.